

U.S. Census Bureau Block Boundary Suggestion Project

Dave Ritts

Montana Department of Commerce

Census and Economic Information Center

April 16, 2026



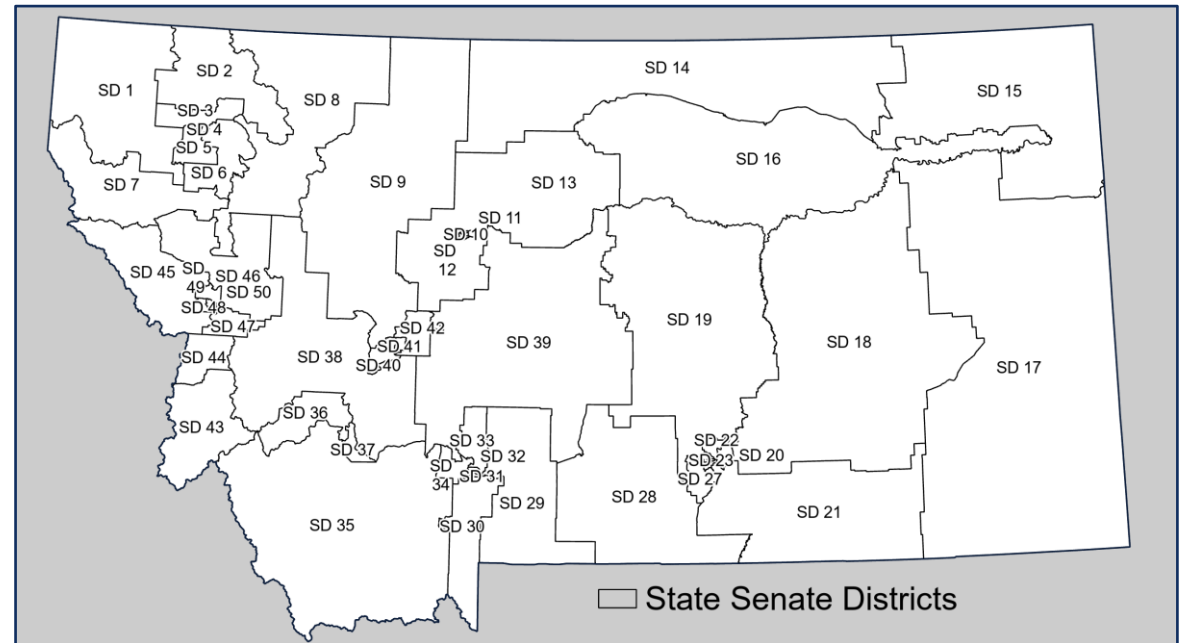
COMMERCE

Montana Redistricting Data Program Liaison

A census redistricting liaison is a nonpartisan appointee designated by state governors and legislative leaders to serve as the primary contact with the U.S. Census Bureau for the Redistricting Data Program.

Liaisons facilitate the exchange of geographic data, voting districts and boundary suggestions for the 2030 Census.

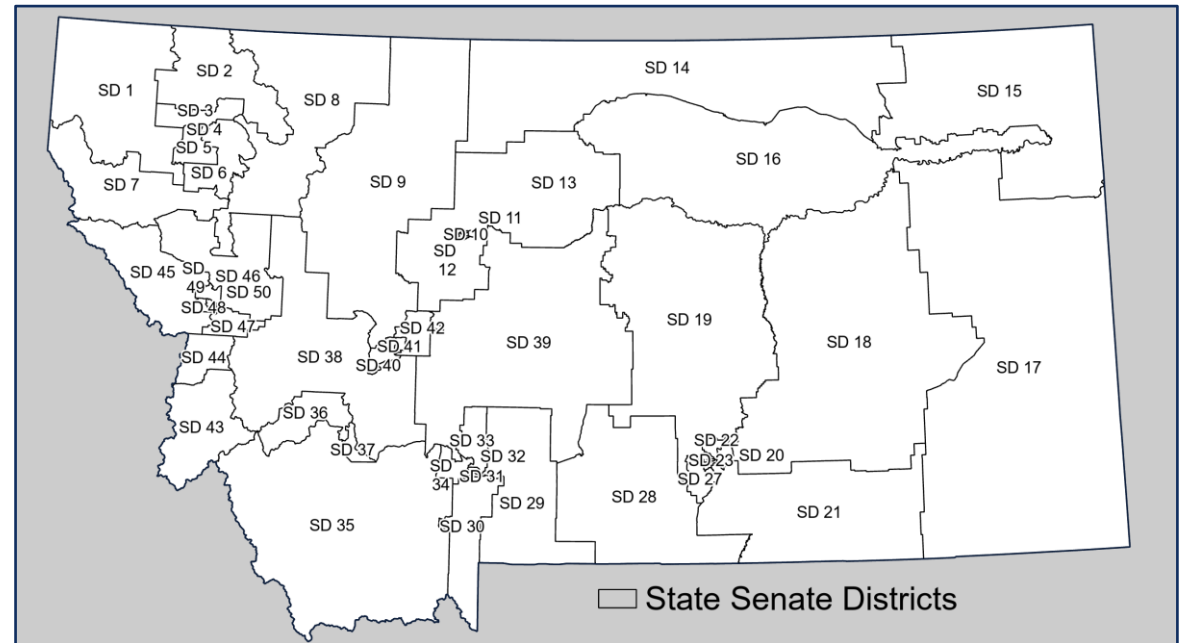
Montana State Senate Districts



Redistricting Data Program

Public Law 94-171, enacted by Congress in December 1975, requires the U.S. Census Bureau to furnish tabulations of population to each state, within one year of Census day, to be used for redistricting State Legislative Districts.

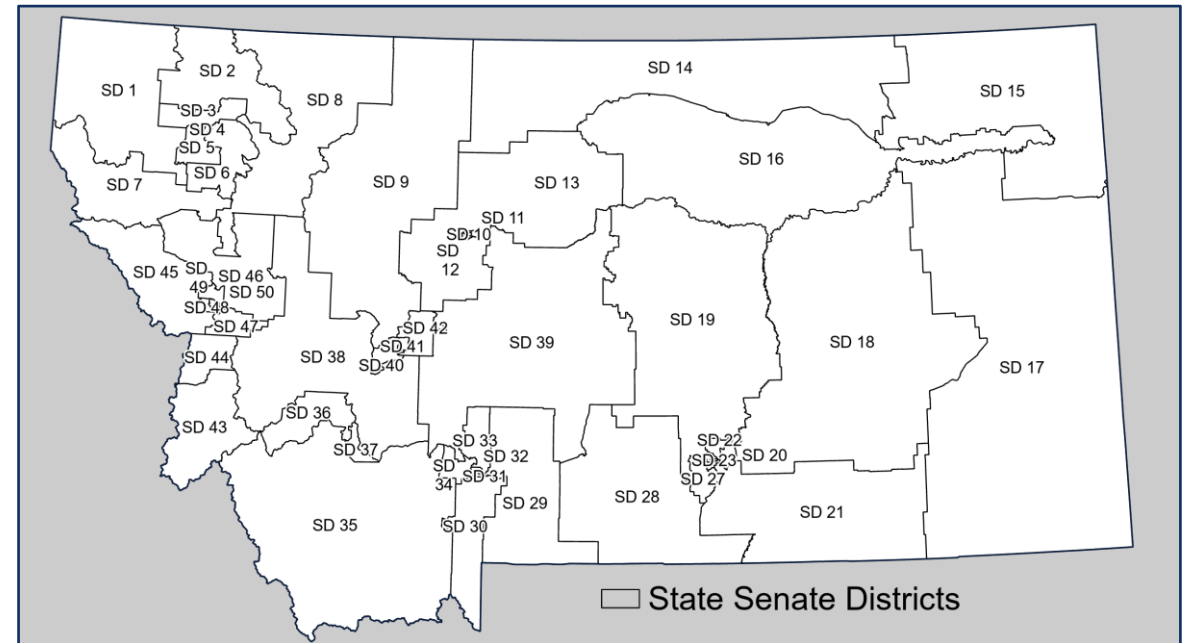
Montana State Senate Districts



Redistricting Data Program

This law also requires the U.S. Census Bureau to provide states the opportunity to identify small area geography for which they need data to conduct legislative redistricting.

Montana State Senate Districts



2030 Redistricting Data Timeline

2025				2026				2027				2028				2029				2030				2031							
Q1	Q2	Q3	Q4	Q1	Q2	Q3	Q4	Q1	Q2	Q3	Q4	Q1	Q2	Q3	Q4	Q1	Q2	Q3	Q4	Q1	Q2	Q3	Q4	Q1	Q2	Q3	Q4				
BAS 2025				BAS 2026				BAS 2027				BAS 2028				BAS 2029				BAS 2030				BAS 2031							
SDRP 2025				SDRP 2026				SDRP 2027				SDRP 2028				SDRP 2029				SDRP 2030				SDRP 2031							
Establish Liaisons				Block Boundary Suggestion Project				Voting District Boundaries				2030 Census				PL 94-171 Data Released															

BAS – Boundary and Annexation

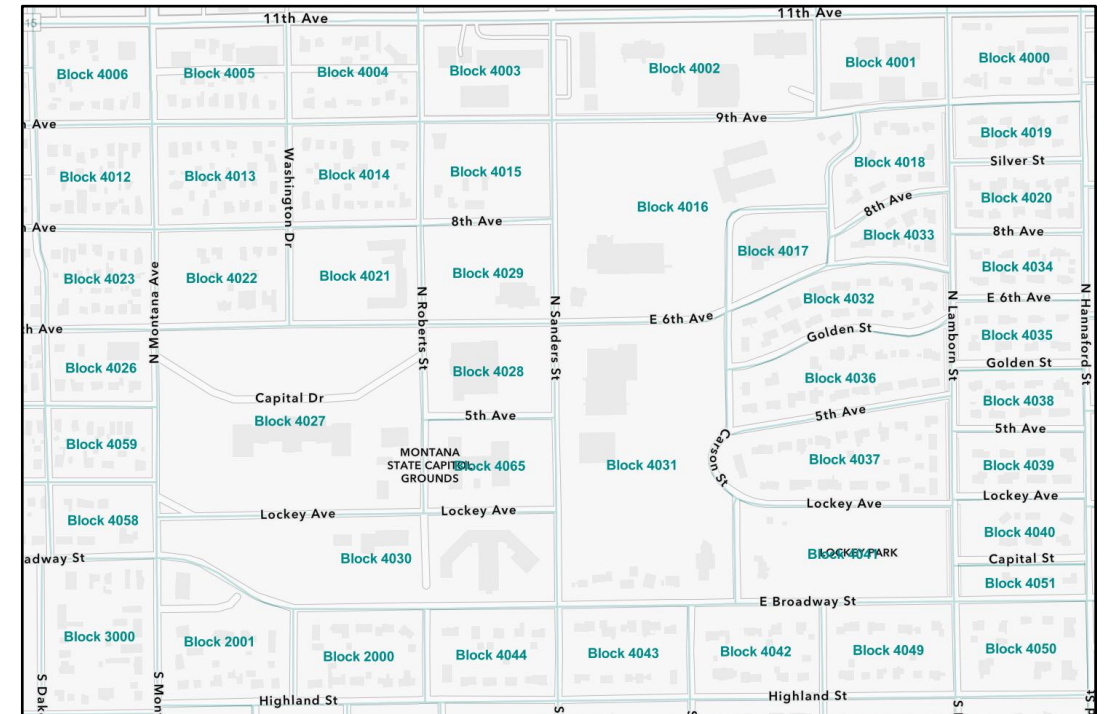
SDRP – School District Review Program



Block Boundary Suggestion Project

Census Blocks

The Block Boundary Suggestion Project is a U.S. Census Bureau Program within the Redistricting Data Program that allows government officials to suggest changes to the block boundaries used for the 2030 Census and subsequent redistricting process.



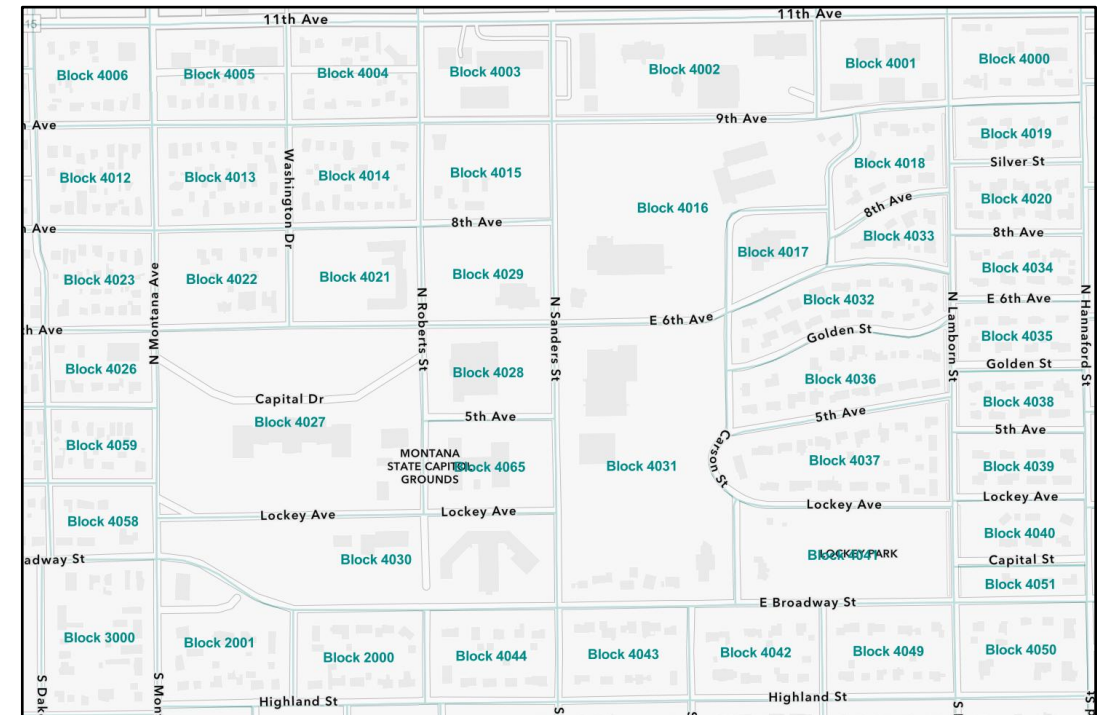
Block Boundary Suggestion Project

Census Blocks

A census block is the smallest geographic unit used by the U.S. Census Bureau and is typically bounded by roads and rivers.

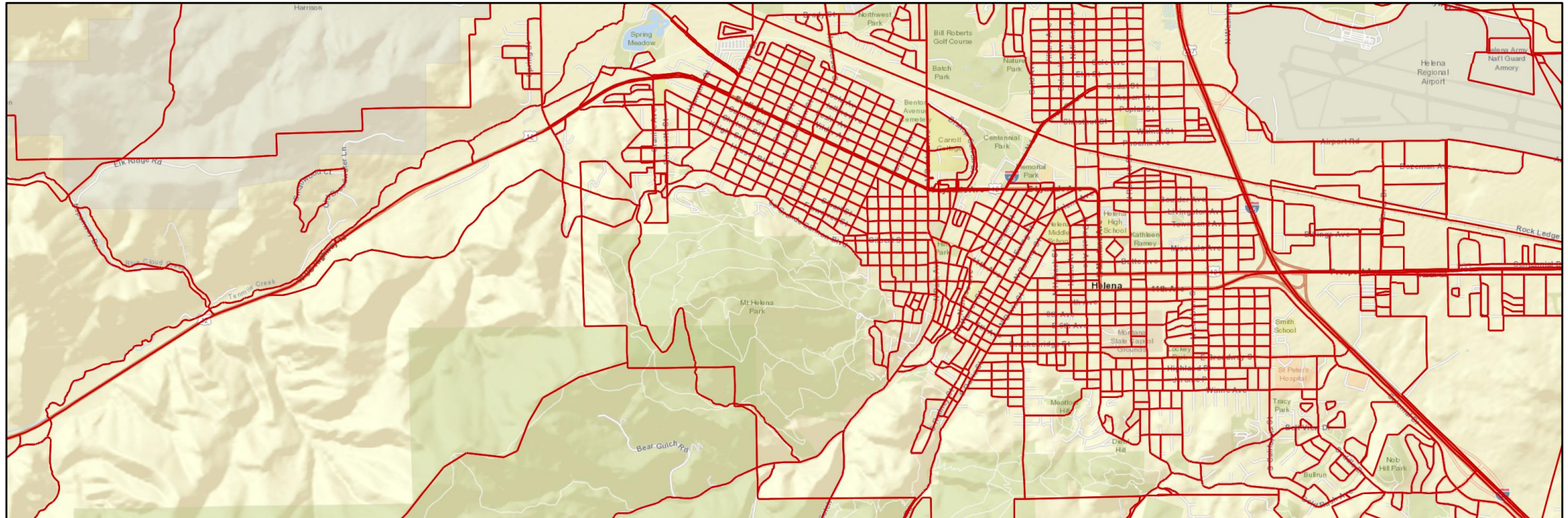
Blocks can contain hundreds of people.

Many blocks have a population of zero.



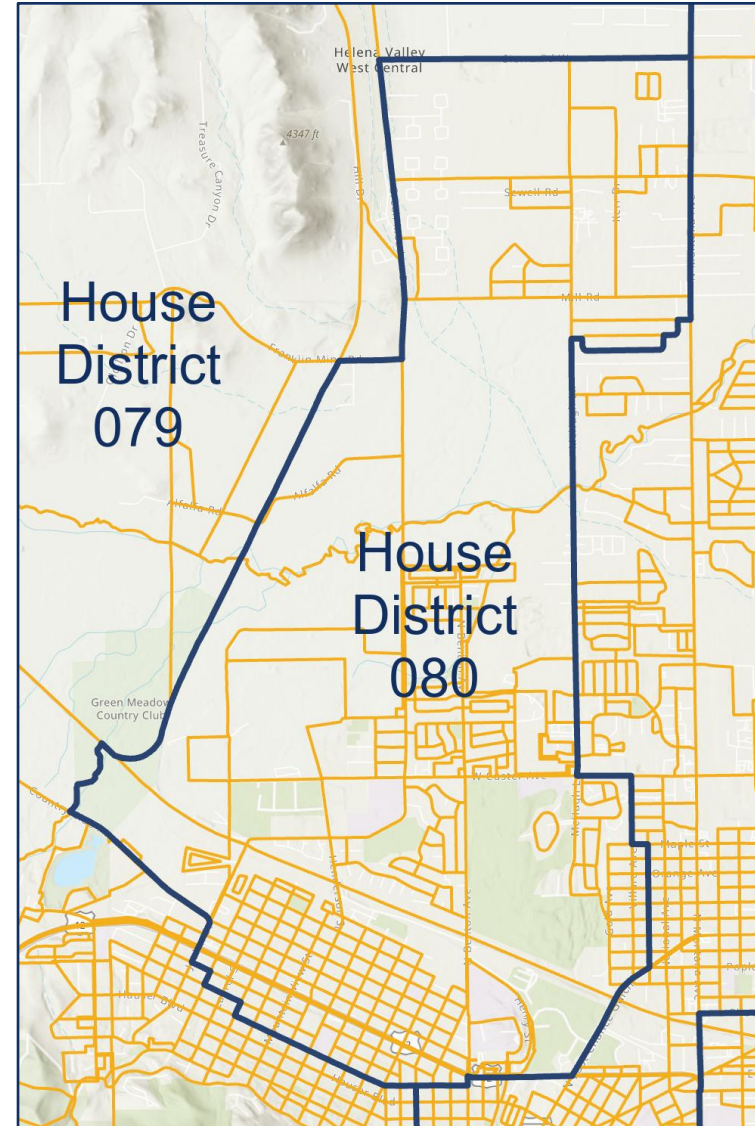
Census Block

Rural blocks are larger and often have small or zero population.

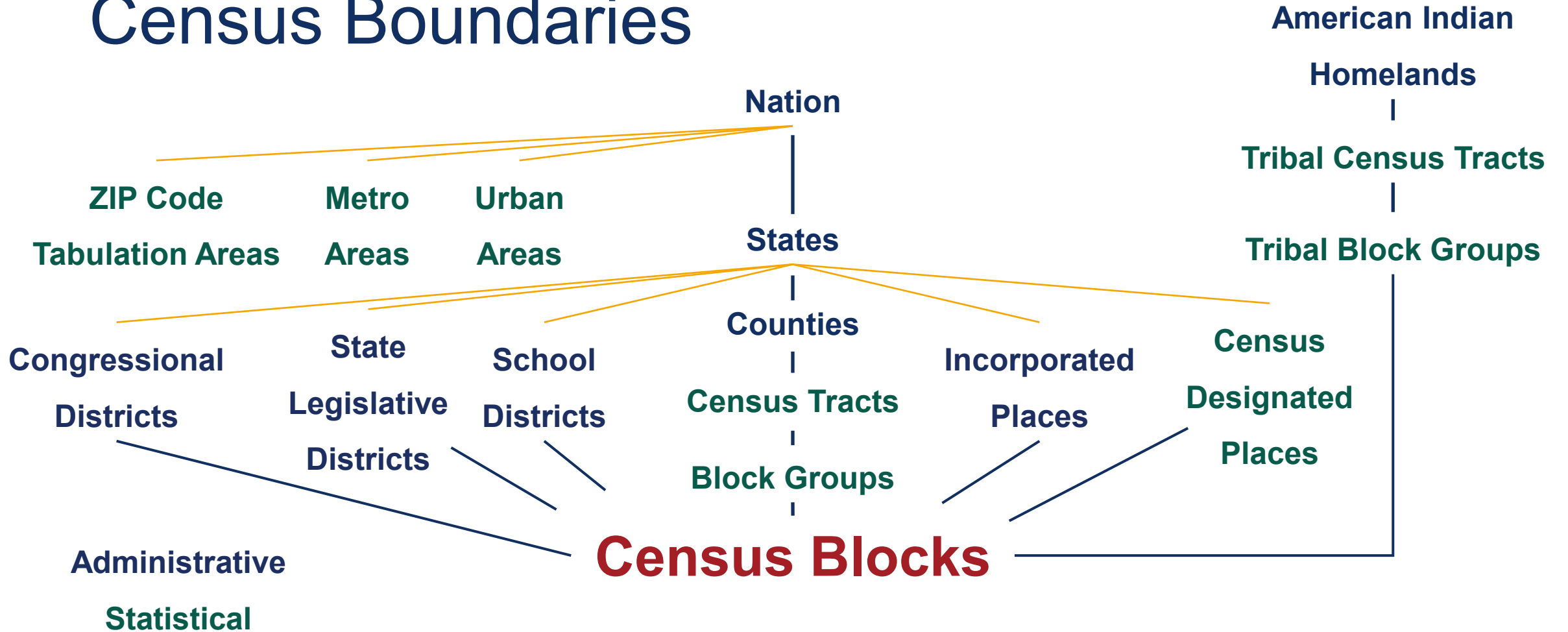


Census Block

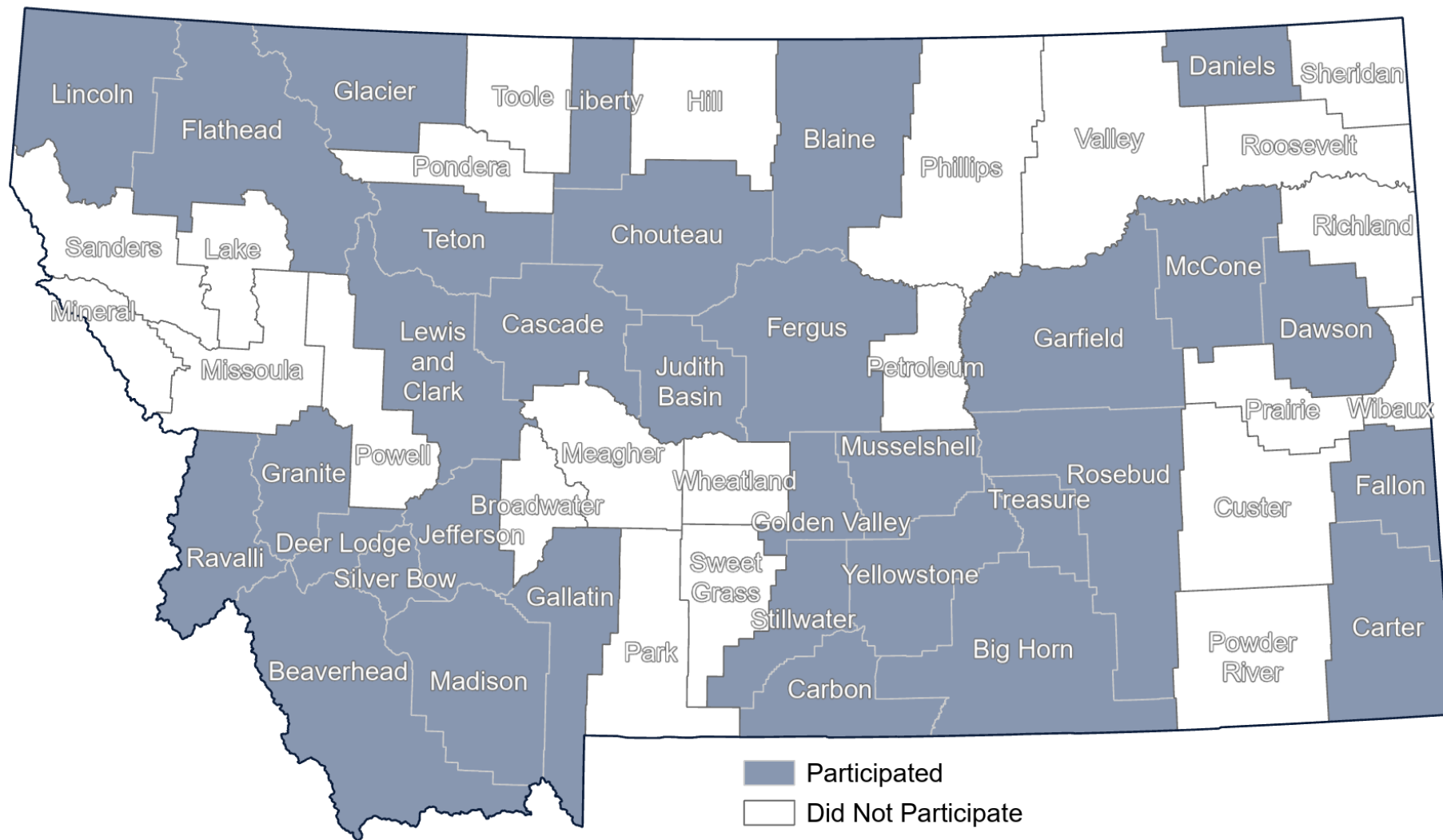
Census block populations are aggregated (summed) into larger geographies like cities, counties, legislative districts and school districts.



Census Boundaries

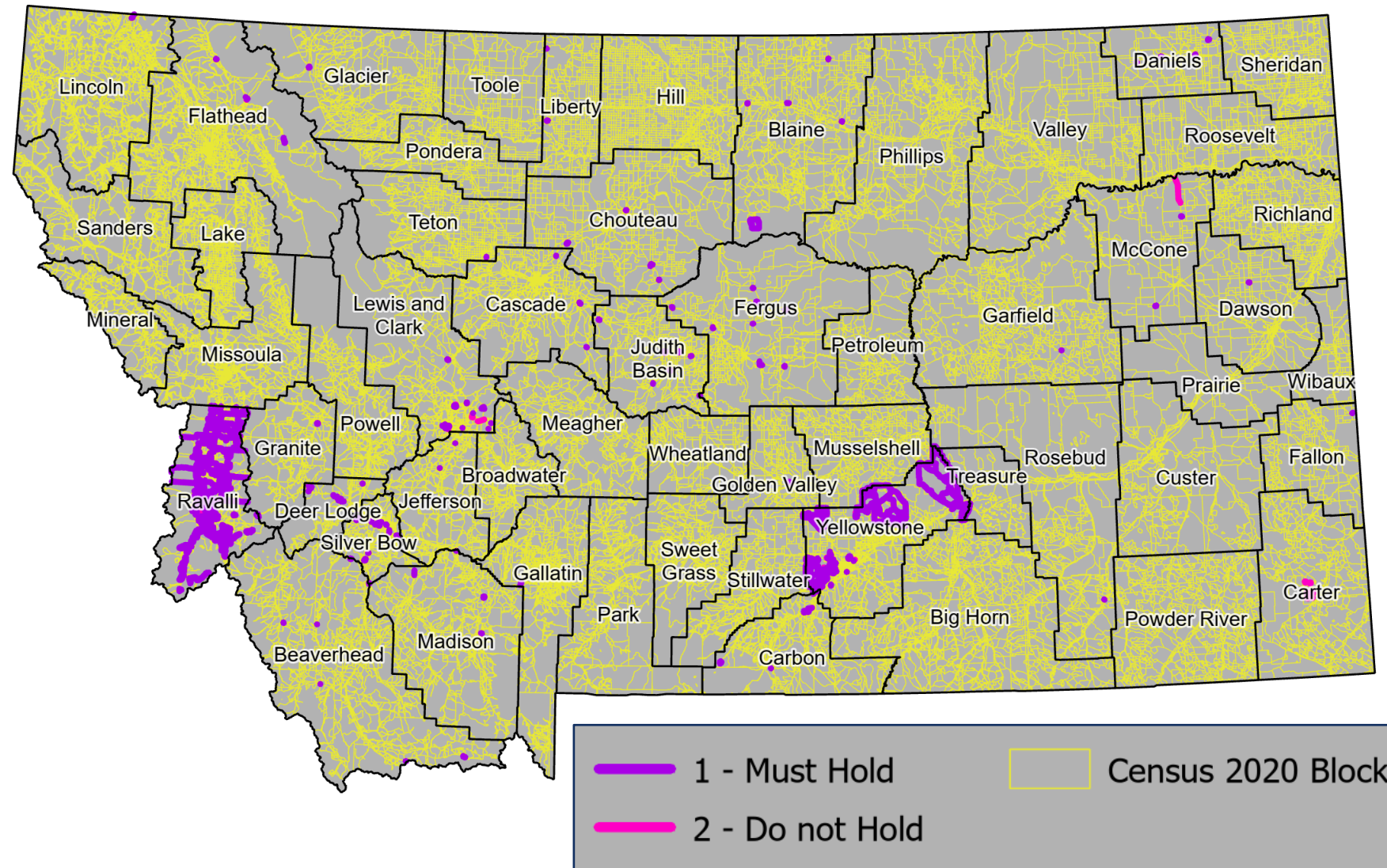


Out of 56 counties,
33 participated in
the 2020 Block
Boundary
Suggestion Project.



Eight of 56 counties suggested many block boundary changes for the 2020 Census:

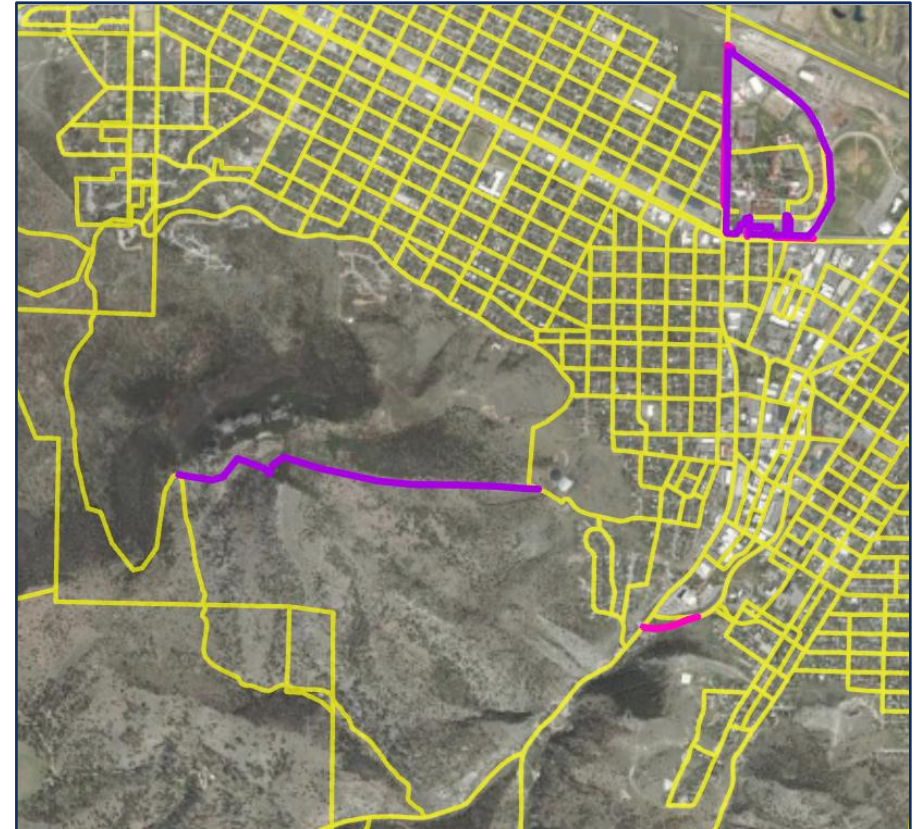
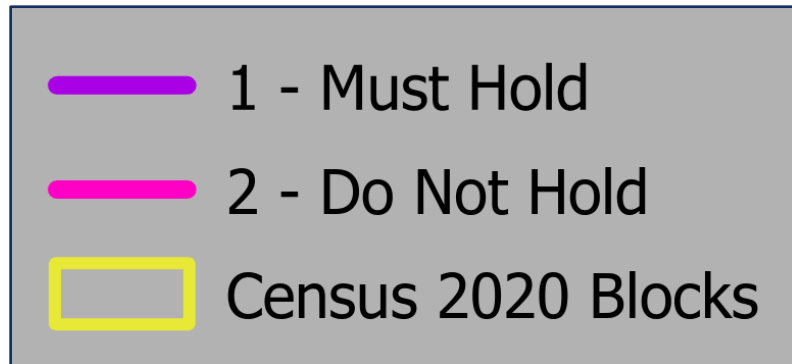
- Deer Lodge
- Fergus
- Flathead
- Judith Basin
- Lewis and Clark
- **Ravalli**
- Silver Bow
- **Yellowstone**



2020 Block Boundary Suggestions: Helena

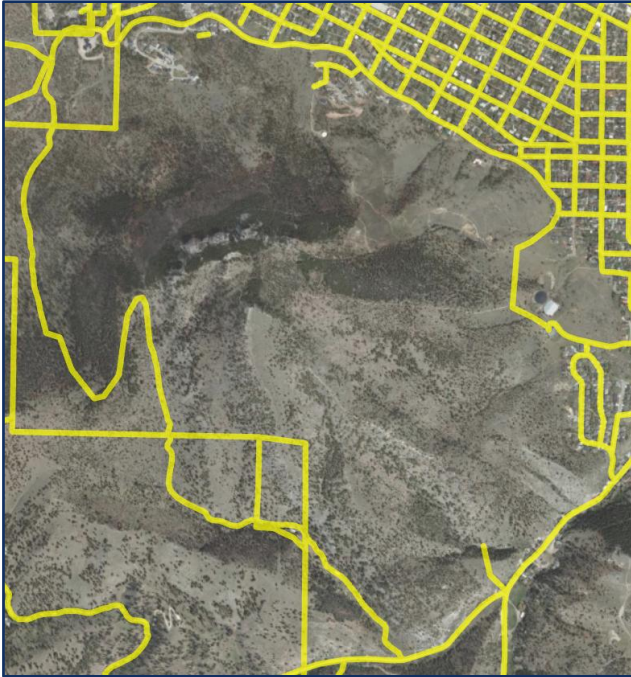
Must Hold: Block boundary we want to add

Do Not Hold: Block boundary we want to remove

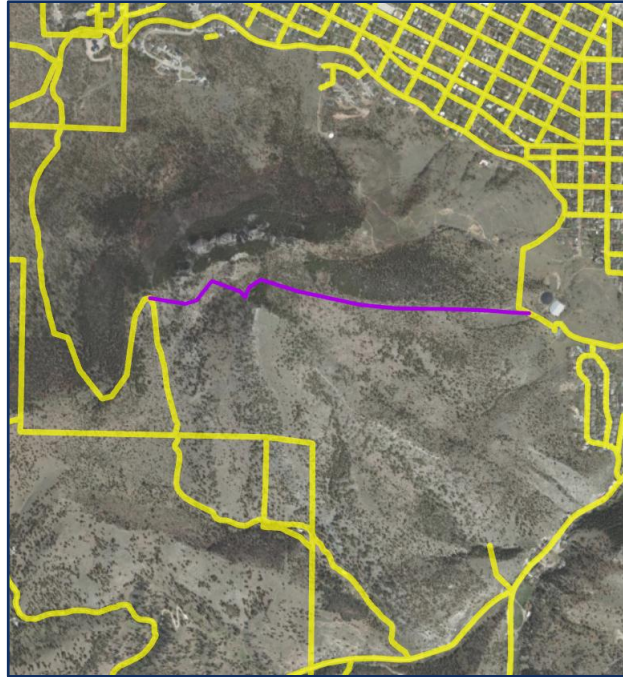


2020 Block Boundary Suggestions: Helena

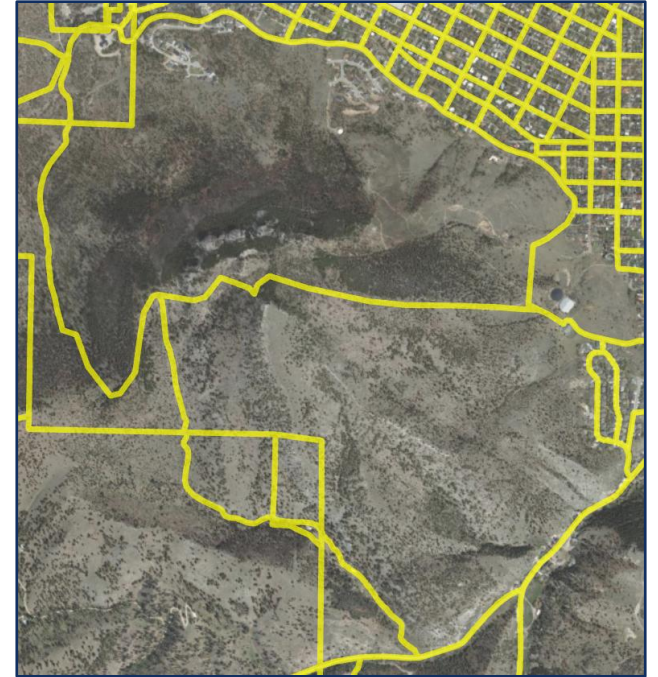
Planned



Do Not Hold



2020 Block



1 - Must Hold 2 - Do not Hold Census 2020 Blocks

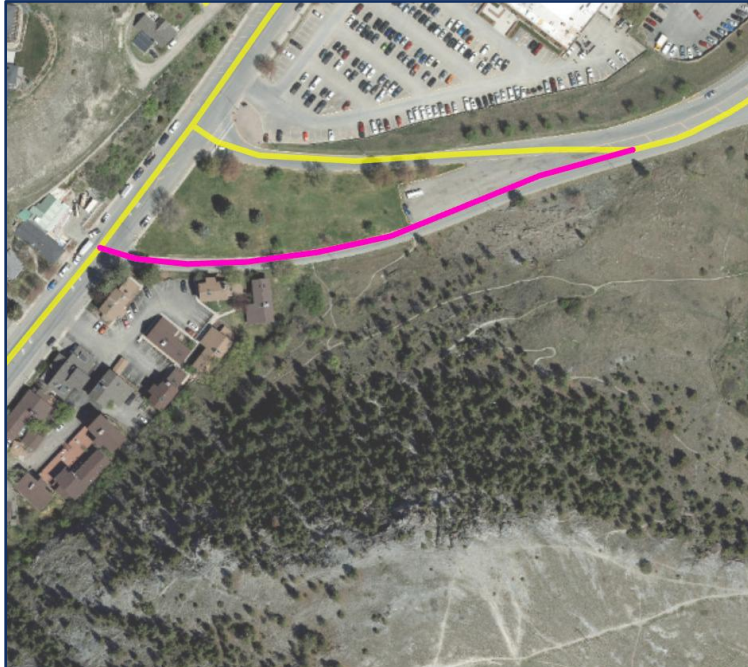


2020 Block Boundary Suggestions: Helena

Planned



Do Not Hold



2020 Block



1 - Must Hold 2 - Do not Hold Census 2020 Blocks



2020 Block Boundary Suggestions: Helena

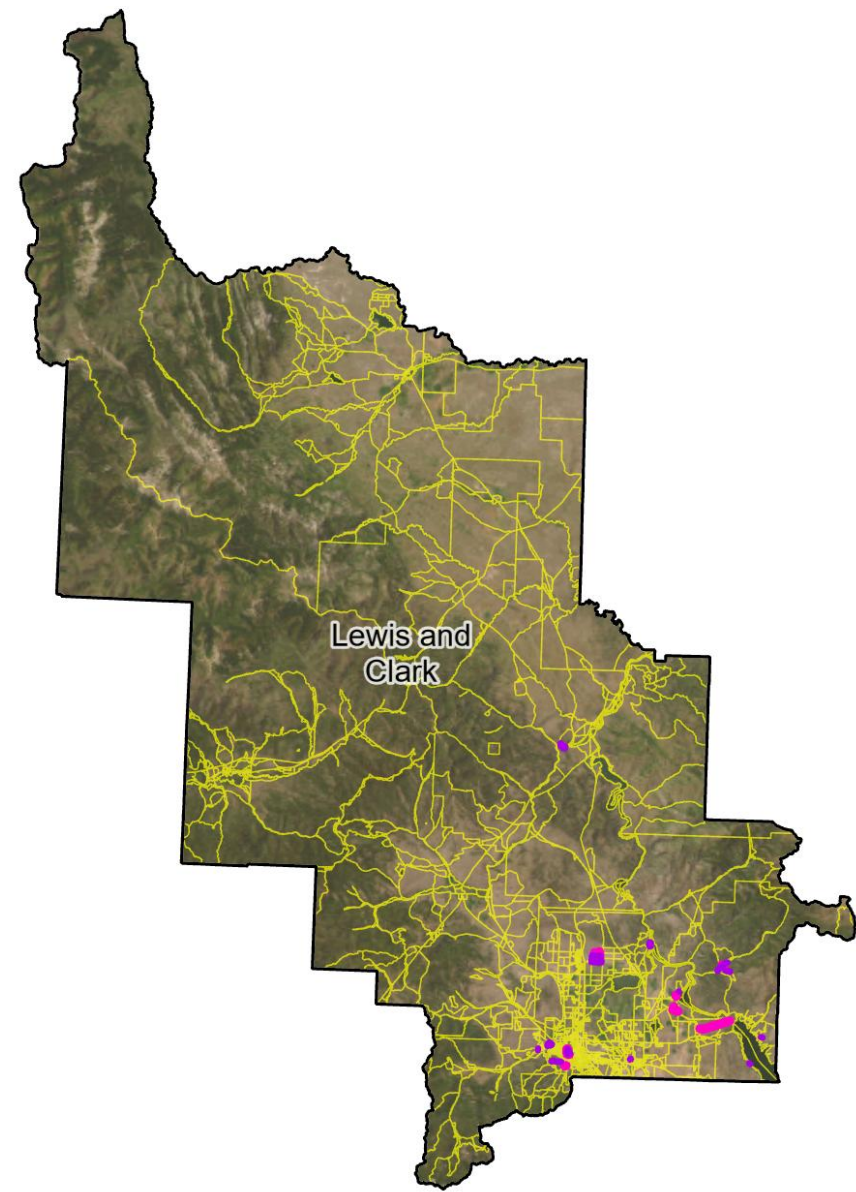
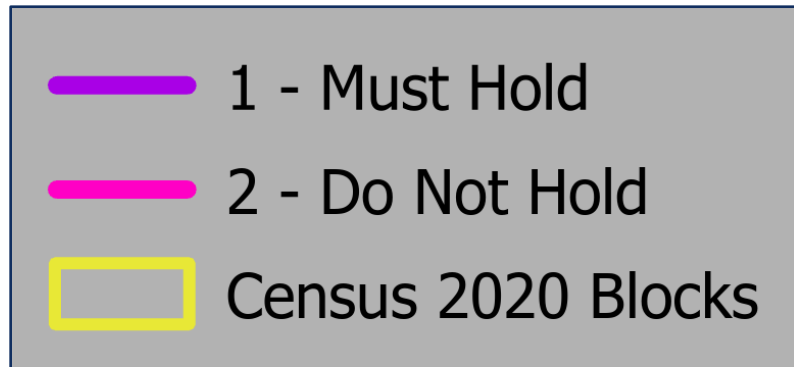


- 1 - Must Hold
- 2 - Do Not Hold
- Census 2020 Blocks



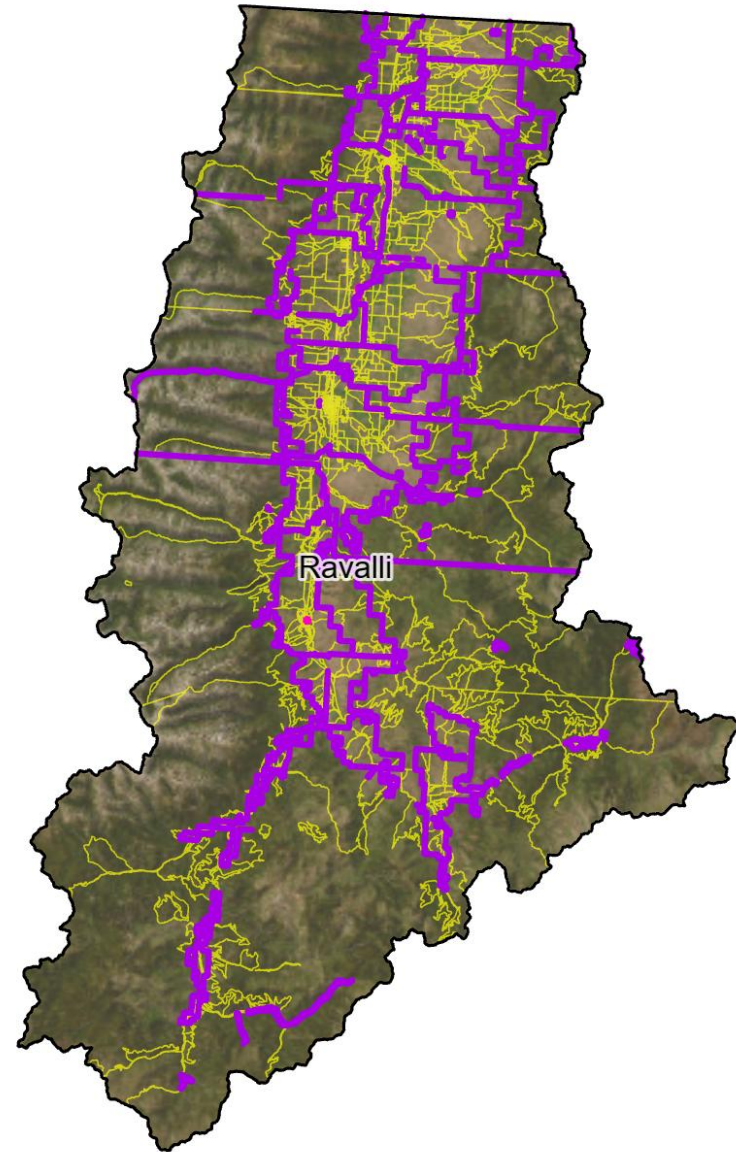
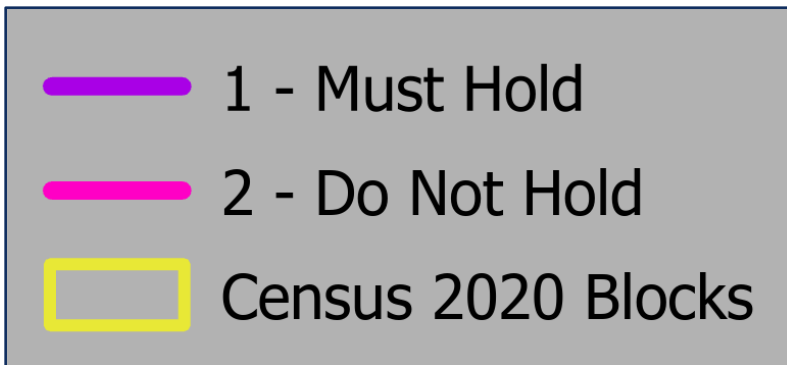
2020 Block Boundary Suggestions

Lewis and Clark County made edits mostly around Helena in 2020.



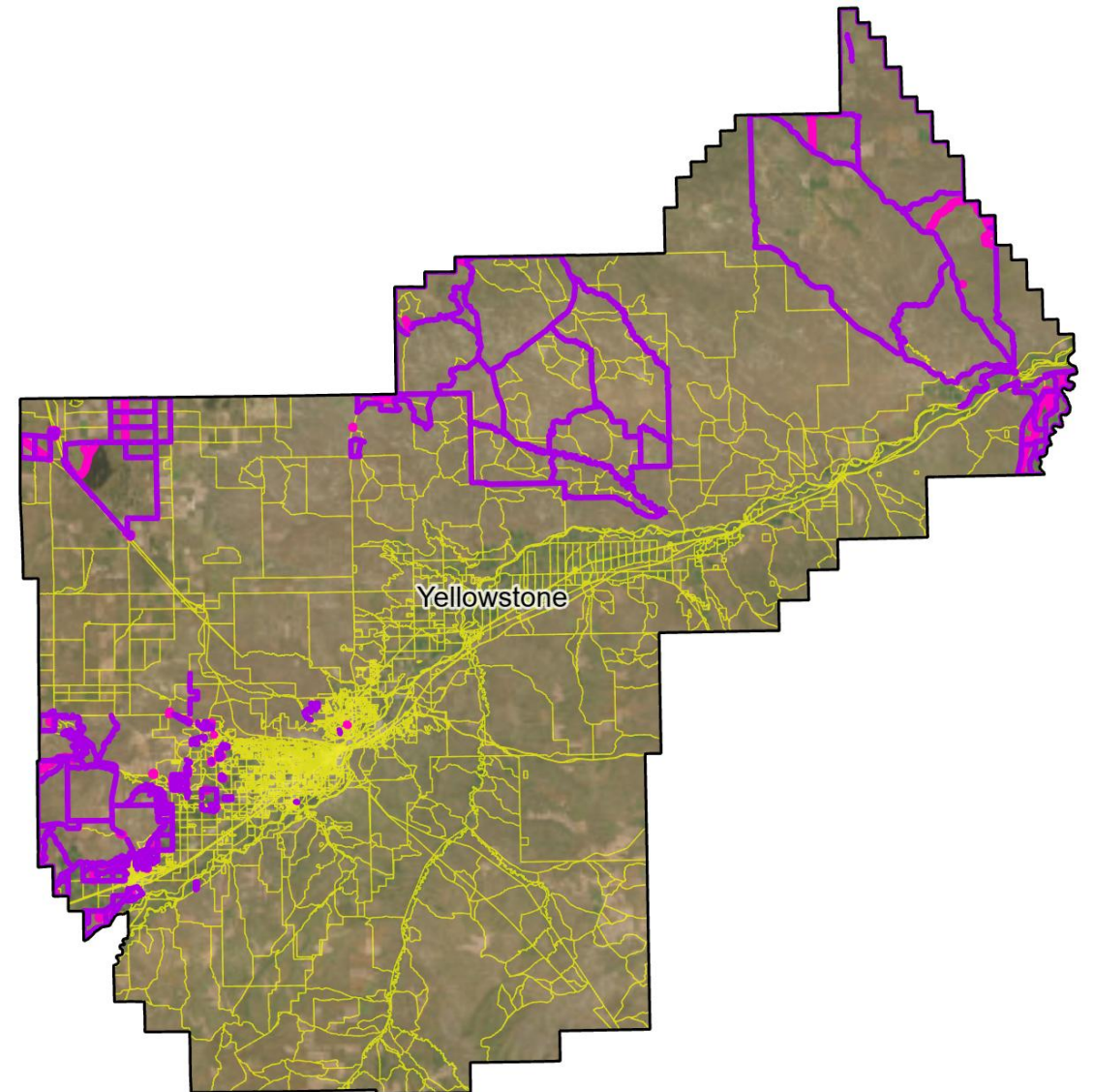
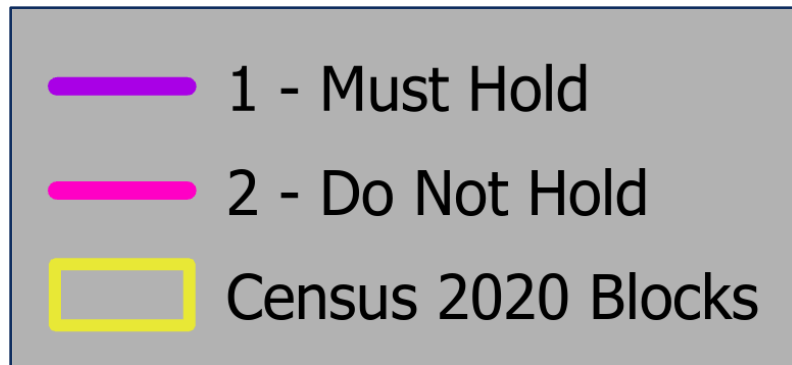
2020 Block Boundary Suggestions

Ravalli County made significant edits in 2020.



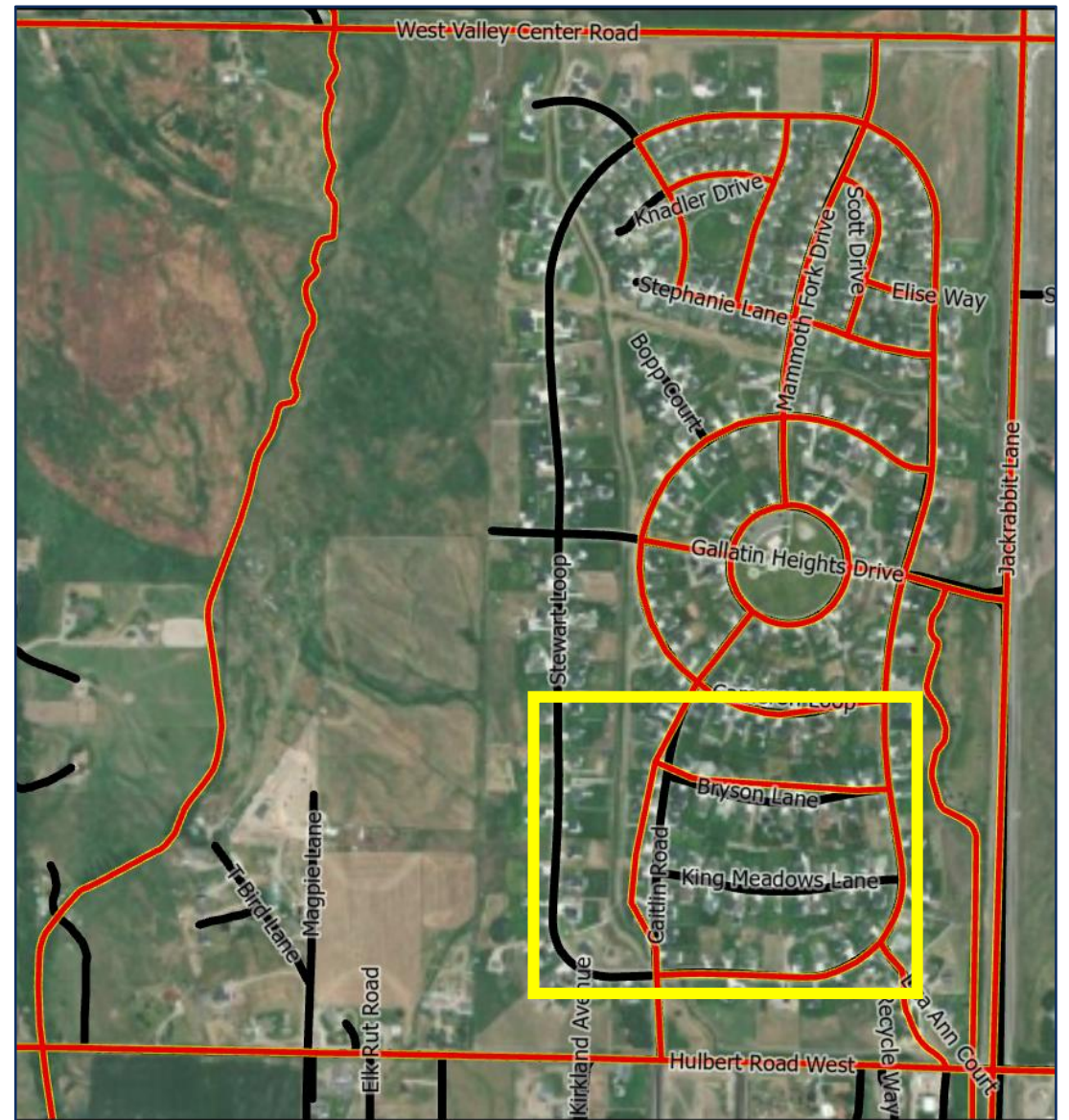
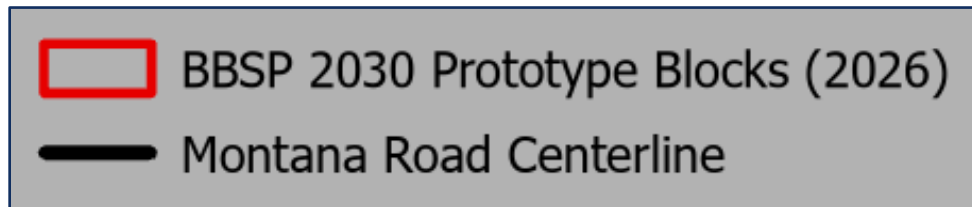
2020 Block Boundary Suggestions

Yellowstone County made significant edits in 2020.



2030 Block Boundary Suggestions?

Gallatin County made one boundary suggestion in 2020. This potential suggestion was not detected in 2020.



How to Review 2030 Prototype Blocks

Step 1: Review the 2030 prototype blocks for your county or city in the [Montana 2030 BBSP — Prototype Blocks \(February 2026\) map](#).

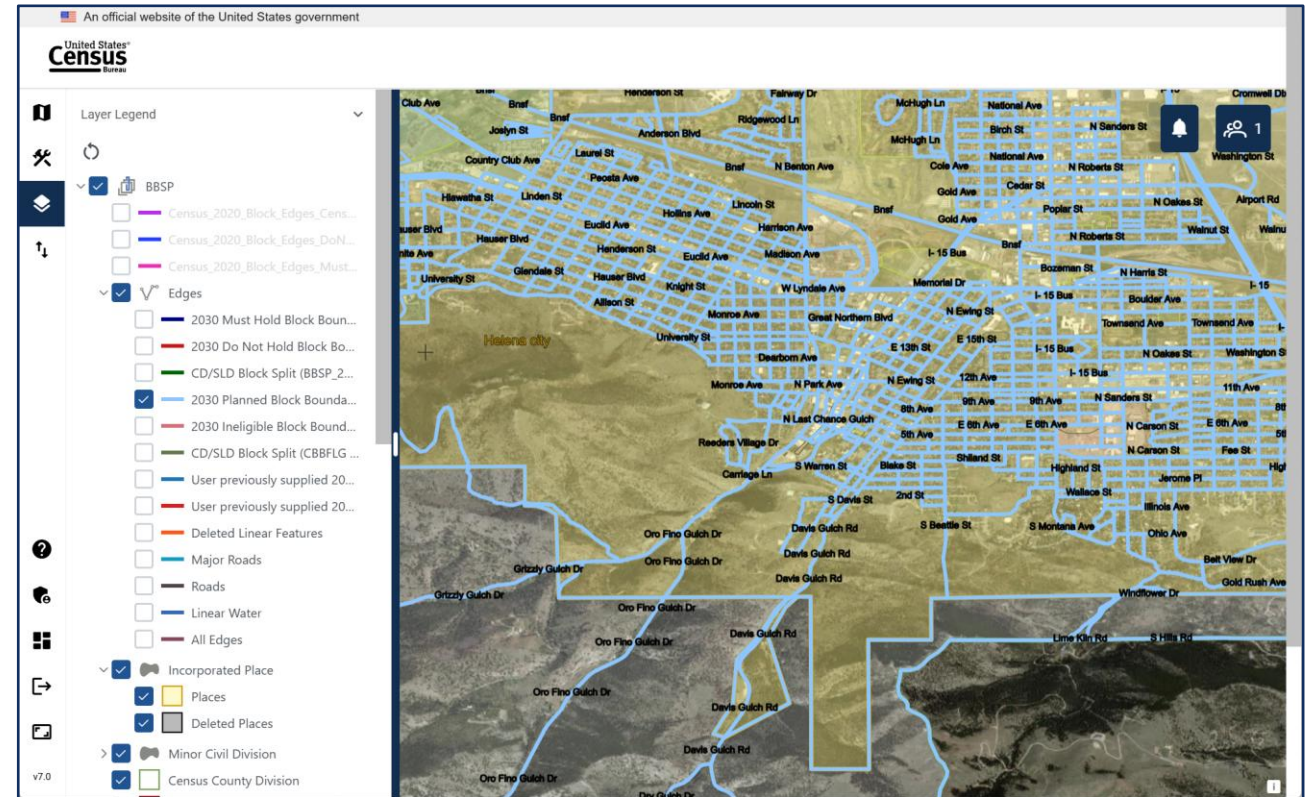
Step 2: If you are interested in making changes to block boundaries, contact Montana Redistricting Data Program Liaison Dave Ritts at dave.ritts@mt.gov.



How to Make 2030 Block Boundary Suggestions

Edits are made for each county using U.S. Census Geographic Update Partnership Software.

This is a full-featured, online GIS editing software with two types of users: Collaborators and Viewers.



How to Make 2030 Block Boundary Suggestions

Two methods for making boundary suggestions:

- Method 1: Work with your own GIS staff to make edits.
- Method 2: Work with Dave Ritts to make edits.



2030 Redistricting Data Timeline

2025				2026				2027				2028				2029				2030				2031							
Q1	Q2	Q3	Q4	Q1	Q2	Q3	Q4	Q1	Q2	Q3	Q4	Q1	Q2	Q3	Q4	Q1	Q2	Q3	Q4	Q1	Q2	Q3	Q4	Q1	Q2	Q3	Q4				
BAS 2025				BAS 2026				BAS 2027				BAS 2028				BAS 2029				BAS 2030				BAS 2031							
SDRP 2025				SDRP 2026				SDRP 2027				SDRP 2028				SDRP 2029				SDRP 2030				SDRP 2031							
Establish Liaisons				Block Boundary Suggestion Project				Voting District Boundaries				2030 Census				PL 94-171 Data Released															

The deadline for initial block boundary suggestions is **May 29, 2026**.



Questions

Dave Ritts

Montana Redistricting Data Program Liaison

Montana Department of Commerce

dave.ritts@mt.gov

406-841-2030

[Block Boundary Suggestion Website](#)

<https://commerce.mt.gov/Data-Research/Government/US-Census-Bureau-Programs/Census-2030-Block-Boundary-Suggestion-Project>

[Montana 2030 BBSP — Prototype Blocks \(February 2026\) Map](#)

<https://experience.arcgis.com/experience/11fd8d46e48e4466ae390d7e03c77e05>

