

**Group 1: These are sensitive to pollutants. Circle each animal found.**



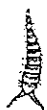
Stonefly Larva



Dobsonfly Larva



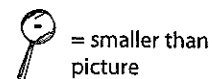
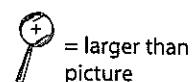
Alderfly Larva



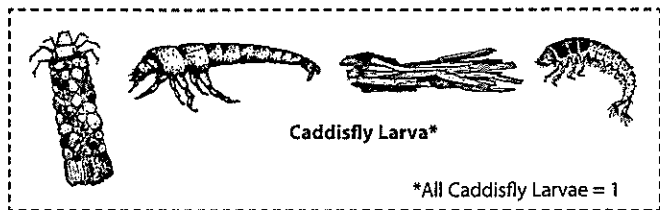
Water Snipe Fly Larva

No. of Group 1  
macroinvertebrate  
types circled (max. 4):

**Relative Size Key:**



**Group 2: These are semi-sensitive to pollutants. Circle each animal found.**



Caddisfly Larva\*

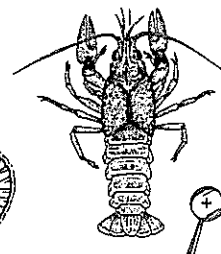
\*All Caddisfly Larvae = 1



Dragonfly Larva



Water Penny

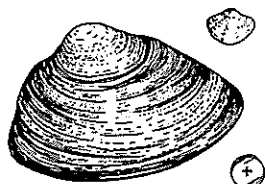


Crawfish

No. of Group 2  
macroinvertebrate  
types circled (max. 9):



Crane Fly Larva



Freshwater Mussel or Fingernail clam



Mayfly Larva



Damselfly Larva



Damselfly tail (side view)



Riffle Beetle Larva\*



Riffle Beetle Adult\*

\*All Riffle Beetles = 1

**Group 3: These are semi-tolerant of pollutants. Circle each animal found.**



Black Fly Larva



Non-Red Midge Larva



Snails: Orb or Gilled (right side opening)



\*All Snails = 1



Amphipod or Scud

No. of Group 3  
macroinvertebrate  
types circled (max. 4):

**Group 4: These are tolerant of pollutants. Circle each animal found.**



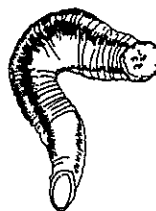
Pouch Snail (left side opening)



Isopod or Aquatic Sowbug



Bloodworm Midge Larva (red)



Leech



Tubifex Worm

No. of Group 4  
macroinvertebrate  
types circled (max. 5):

For more information, call (608) 265-3887 or (608) 264-8948.

Download and print data sheets from [watermonitoring.uwex.edu/wav/monitoring/sheets.html](http://watermonitoring.uwex.edu/wav/monitoring/sheets.html)

© 2014 University of Wisconsin. This publication is part of a seven-series set, "Water Action Volunteers - Volunteer Monitoring Factsheet Series." All recording forms are free and available from the WAV coordinator. WAV is a cooperative program between the University of Wisconsin-Extension & the Wisconsin Department of Natural Resources. University of Wisconsin-Extension is an EEO/Affirmative Action employer and provides equal opportunities in employment and programming, including Title IX and ADA requirements.

**Water Action Volunteers**