

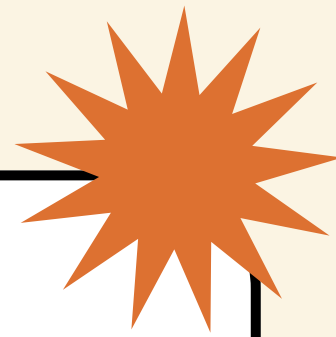


Early College Summit

Mission in Motion

ALIGNING VISION, GOALS, AND STUDENT OPPORTUNITIES
THROUGH THE NEXT GENERATION EARLY COLLEGES FRAMEWORK





Dare Early College

Inaugural Year 2025-2026



Dare County, North Carolina



Located on College of the Albemarle's Dare campus



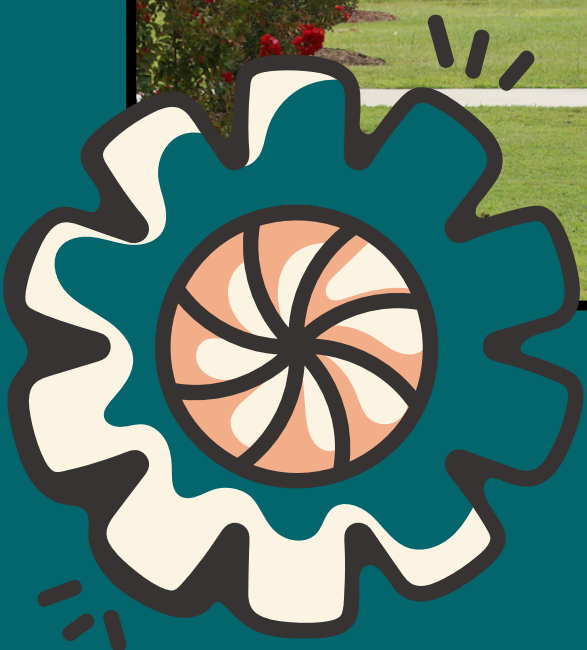
Moving into DEC's new facility in January 2027

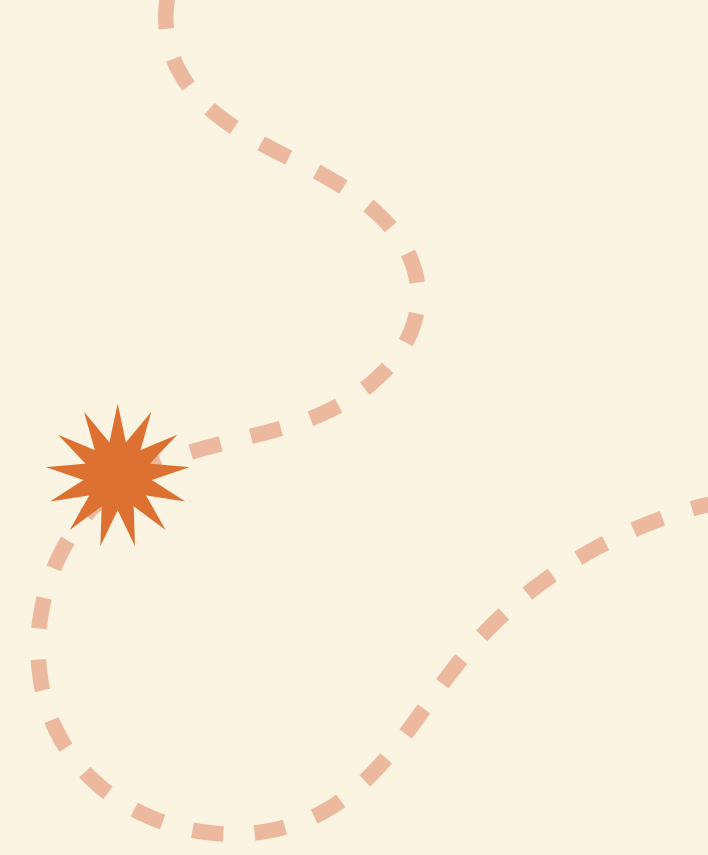


Three middle schools | Three communities



56 ninth-grade students





Where do
you start?



Paragraph Writing

Thesis Statement

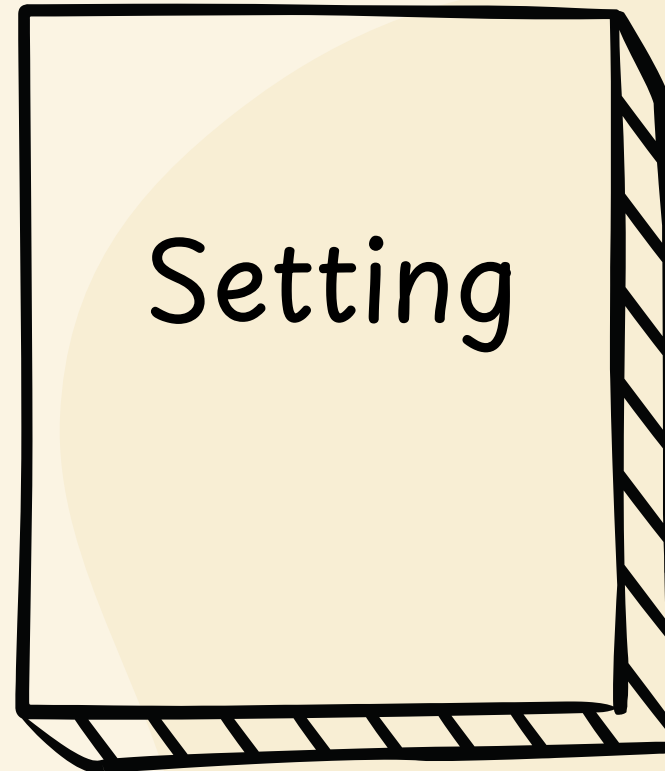
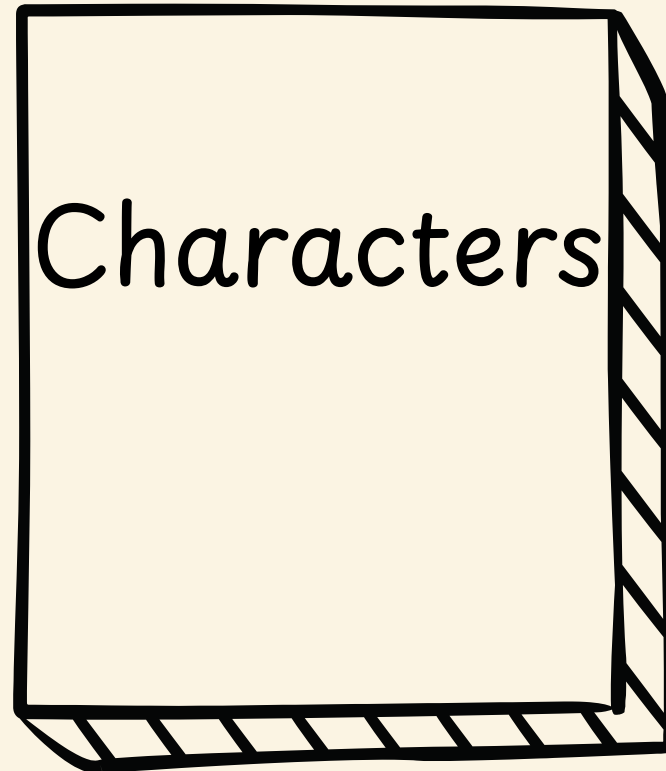
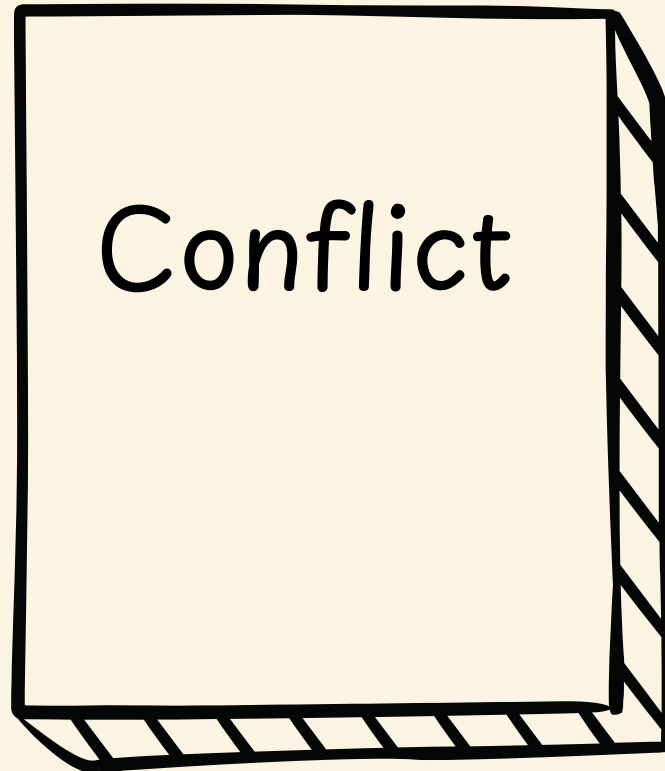
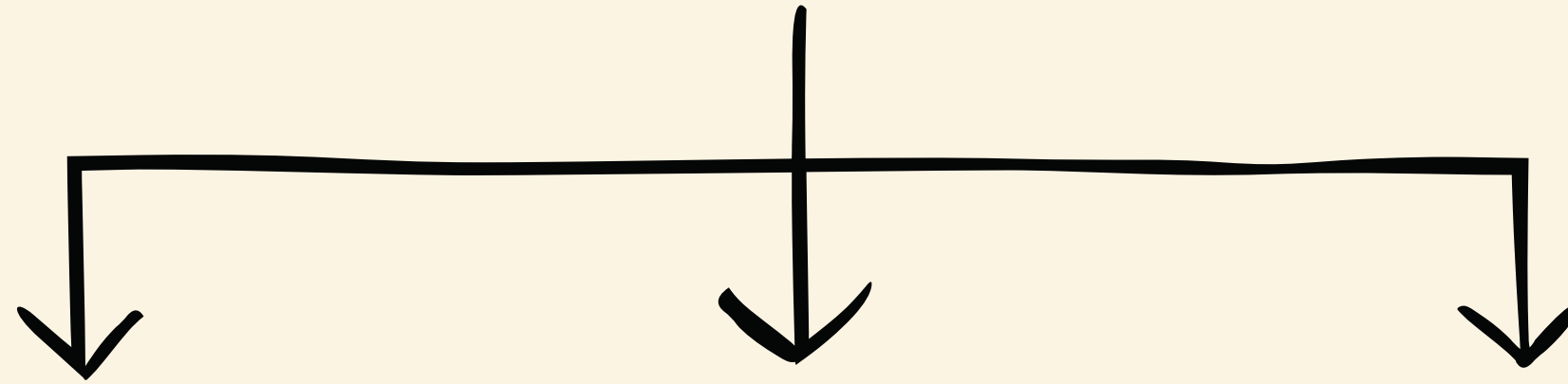
```
graph TD; A[Thesis Statement] --> B[Topic Sentence]; A --> C[Topic Sentence]; A --> D[Topic Sentence];
```

Topic Sentence


Topic Sentence

Topic Sentence

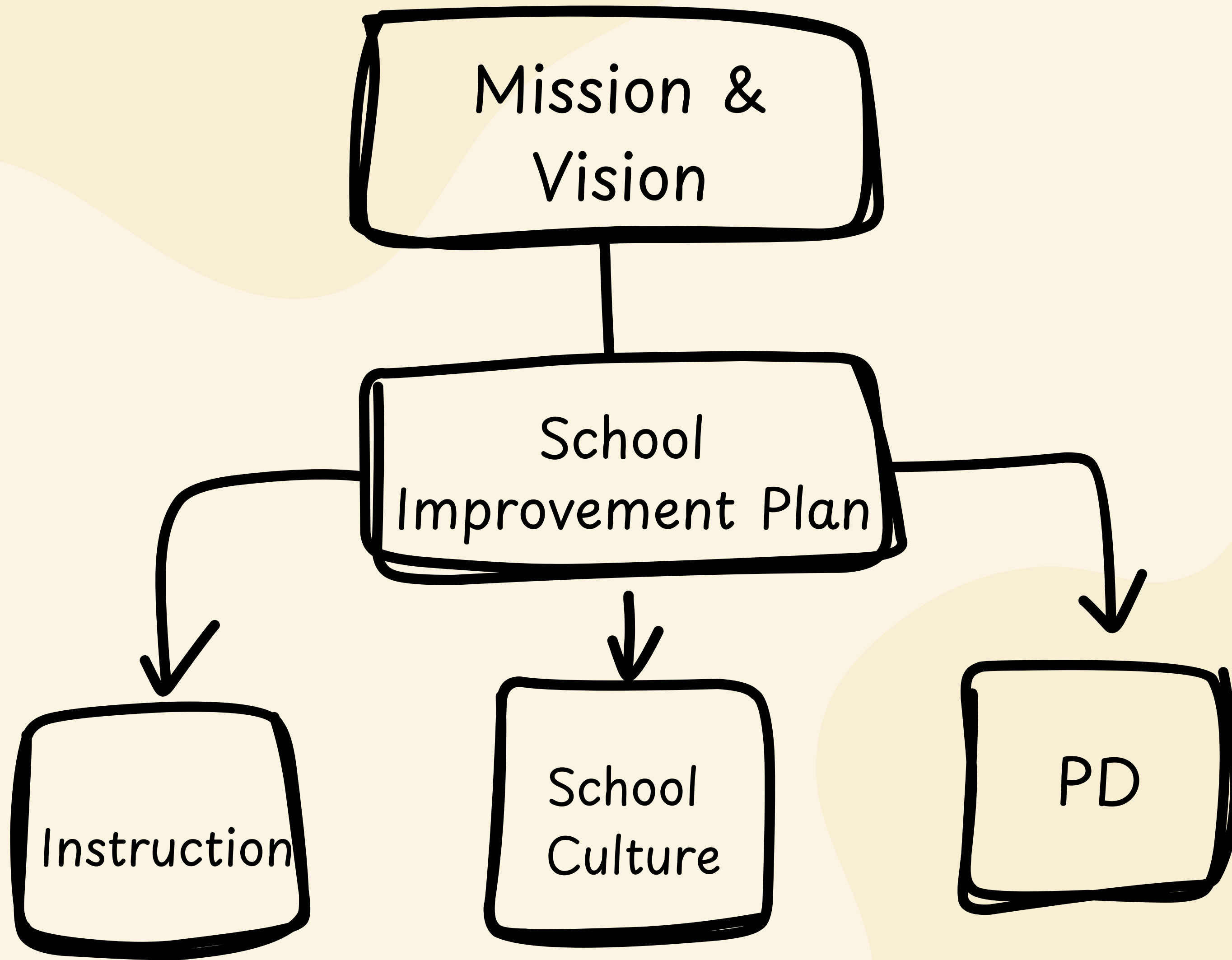
Literary Analysis

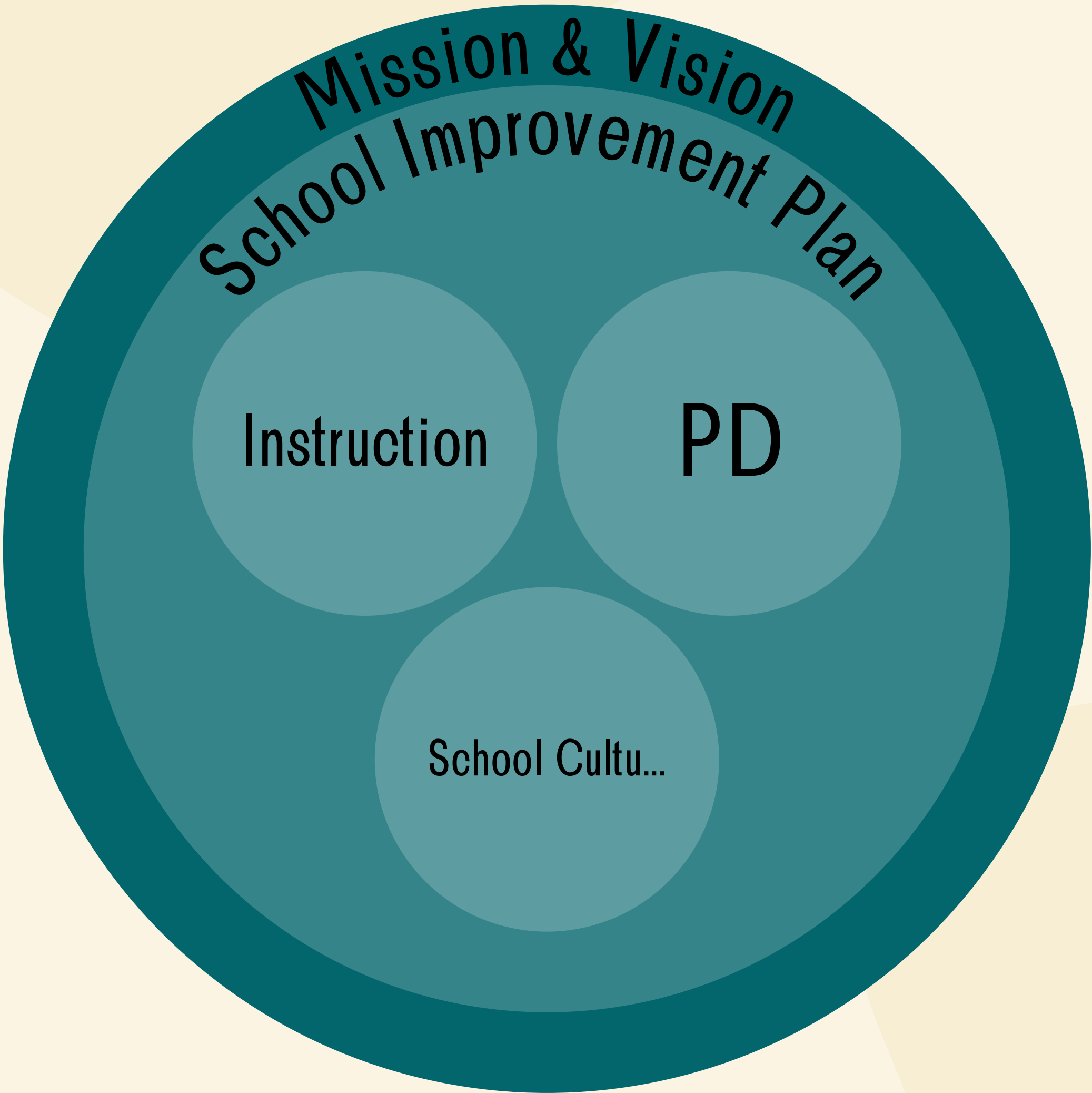


Anchored Alignment



Next Generation Early Colleges Framework for School Improvement
School Improvement Goals & Plan
Professional Development
Mission & Vision
School Culture





Next Generation Early Colleges Framework for School Improvement

Staff Reflection & Needs Assessment

Staff members read the Framework and highlighted elements that they perceive to be the most immediate areas of focus.

School Improvement Team Needs Assessment

Our School Improvement Team also completed a needs assessment using the Framework.

Aligned School Improvement Plan & PD Plan

Our team developed a School Improvement Plan that featured an embedded Professional Development Plan.

School Improvement Goals

Action Steps

Increase Student Learning

II.6 A Next Generation Early College demonstrates teaching for learning through innovative instructional practice that builds student self-efficacy through active collaboration.

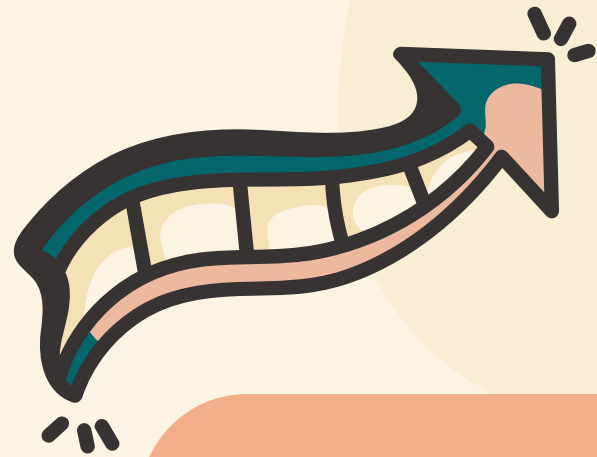
Reflective practice to encourage staff collaboration and professionalism to make practice public.

Engage in ongoing PD related to student-centered strategies.

Develop and implement a system for completing instructional rounds and learning walks.

Develop a bank of instructional protocols/strategies that are used schoolwide.

Professional Development Planning



Action Steps

Teachers' Goal:

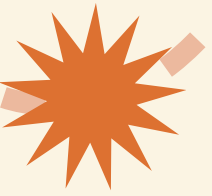
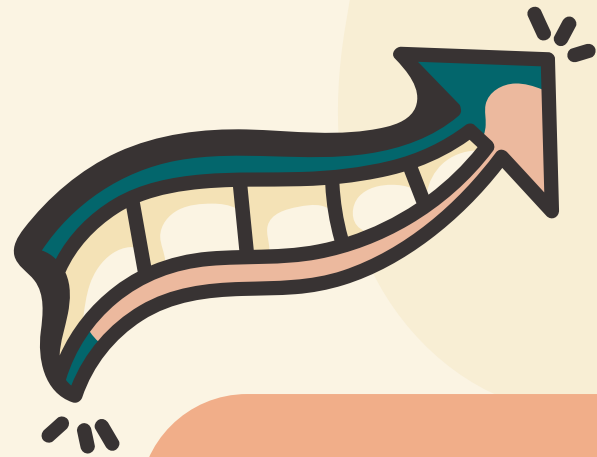
Teachers will implement student-centered strategies that promote collaboration, critical thinking, and problem-solving, while differentiating instruction and fostering student voice, independence, and self-advocacy.

Attend Early College Network PD opportunities related to Essential Practices for CCR Instruction.

Lead Learning Sessions

Learning Walks & Reflection

Professional Development Planning



Action Steps

Teachers' Goal:

Teachers will implement student-centered strategies that promote collaboration, critical thinking, and problem-solving, while differentiating instruction and fostering student voice, independence, and self-advocacy.

Attend Early College Network PD opportunities related to Essential Practices for CCR Instruction.

Lead Learning Sessions

Learning Walks & Reflection



Defining Our Mission & Vision

Stakeholder Questions



Why does Dare
Early College
Exist?

What impact do
we want our
school to have on
students and on
our community?

What are some
values that make
our school
unique?

How should our
graduates
contribute to their
community or
future?

Themes



Opportunity

Commitment to
Growth and
Aspiration

Goal Orientation
and Perseverance



Service Leadership

Individualized
Support and
Adaptability



Mascot Development

Resilience

Self-Discovery

Courage

Leadership

Critical
Thinking

Integrity



Discover. Thrive. Lead.



Mission

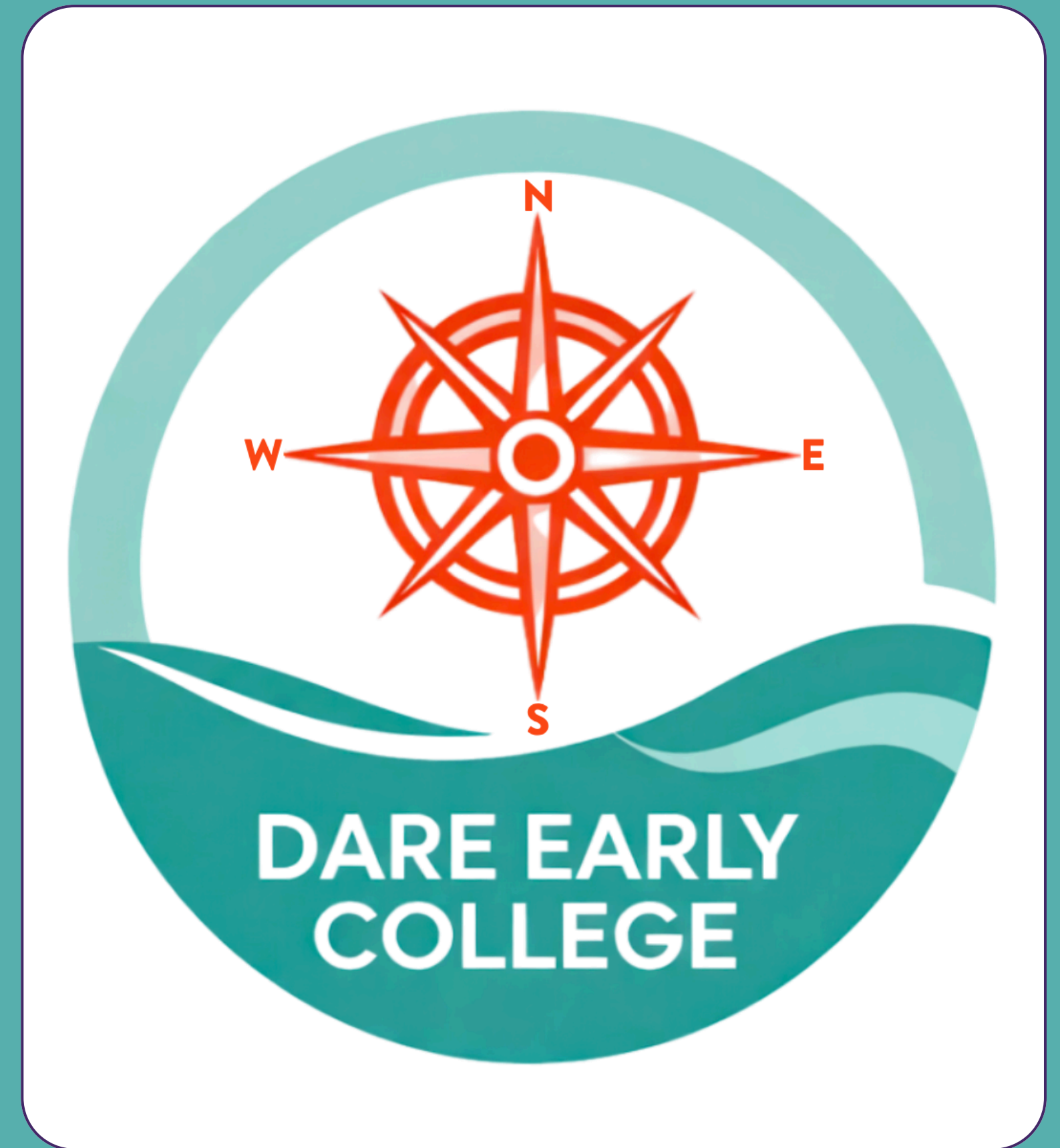
To empower students to chart new courses, discover their passions, thrive in learning, and lead with purpose and courage.

Vision

Dare Early College is cultivating a community of leaders who navigate challenges with purpose, courage, innovation, and integrity as they guide and serve their communities.

Dare Early College

MARINERS



DISCOVER

Mariners chart new courses, exploring the unknown with curiosity and courage.

THRIVE

Mariners rely on skill, preparation, and teamwork to succeed through challenge and change.

LEAD

Mariners guide others safely to shore, demonstrating leadership, integrity, and resilience.

Student Opportunities

Discover

- College coursework
- Career exploration
- Guest speakers
- College campus events
- Academic competitions
- Clubs
- Leadership conference

Thrive

- Earning college credits
- Academic support through Office Hours & Peer Tutoring
- Own Your Voyage Initiative
- College success seminar and advising
- Celebrations of student achievement and growth

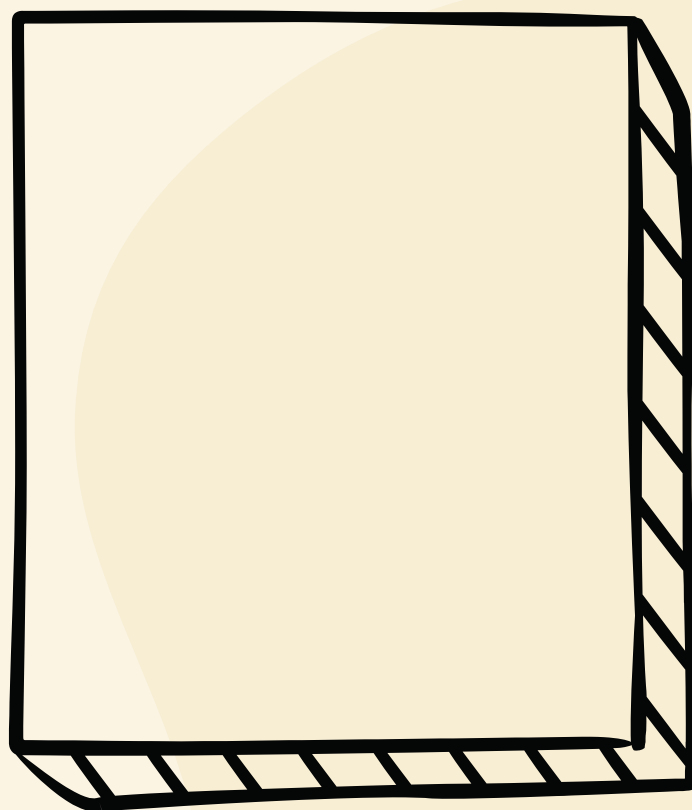
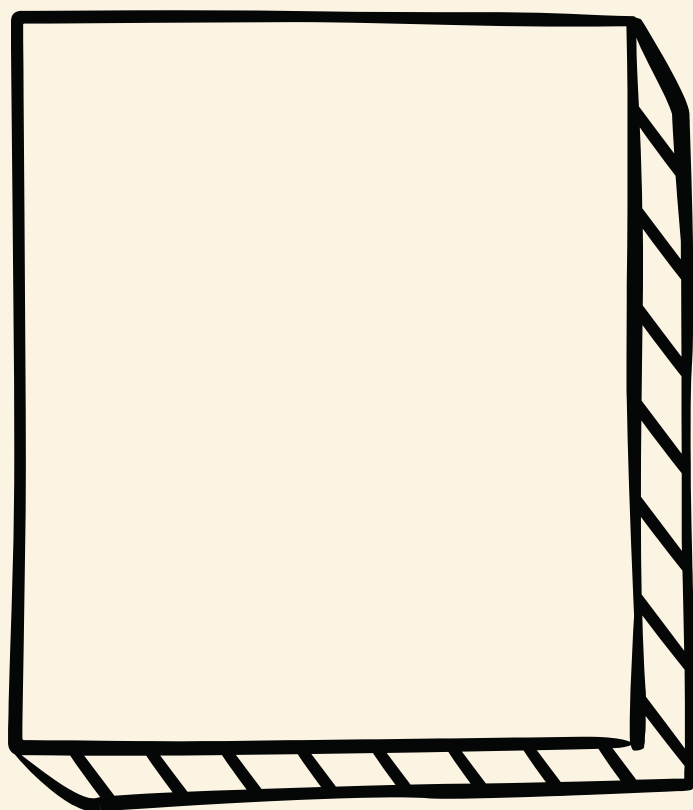
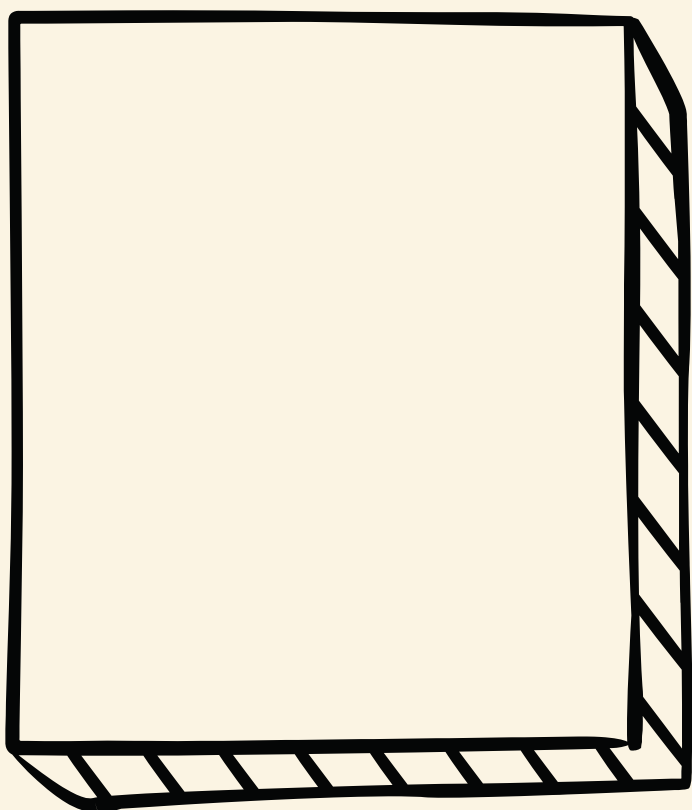
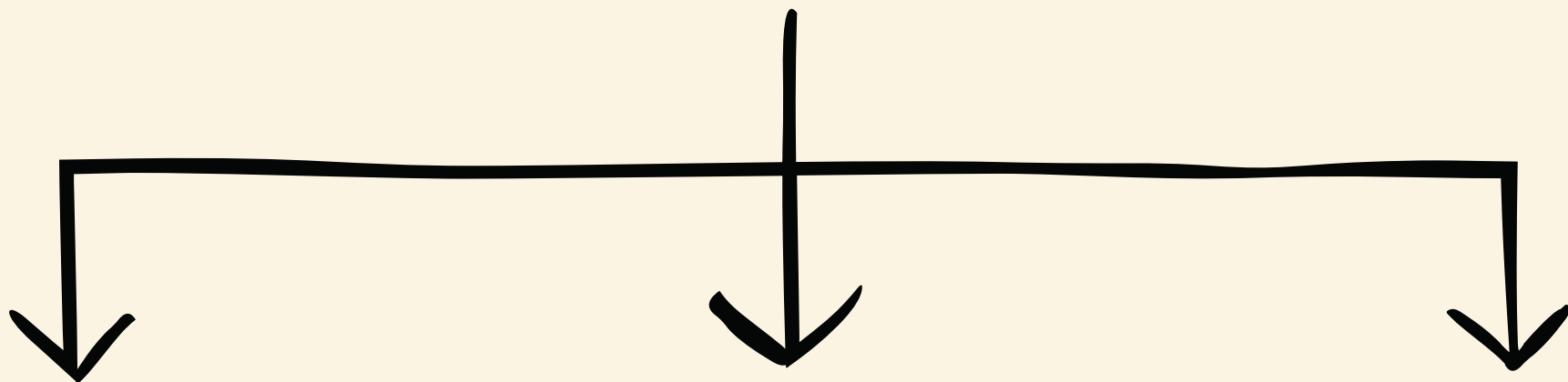
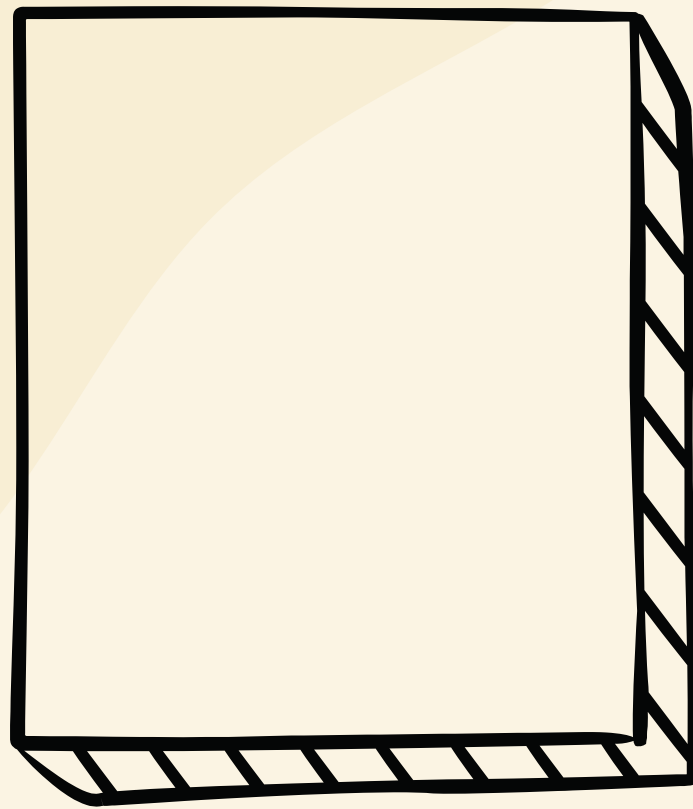
Lead

- SGA
- Peer Tutor Initiative
- Club officer positions
- Ambassadors and student representatives at school events
- Yearbook leadership and publication roles
- Organizing school events and spirit activities

Reflection



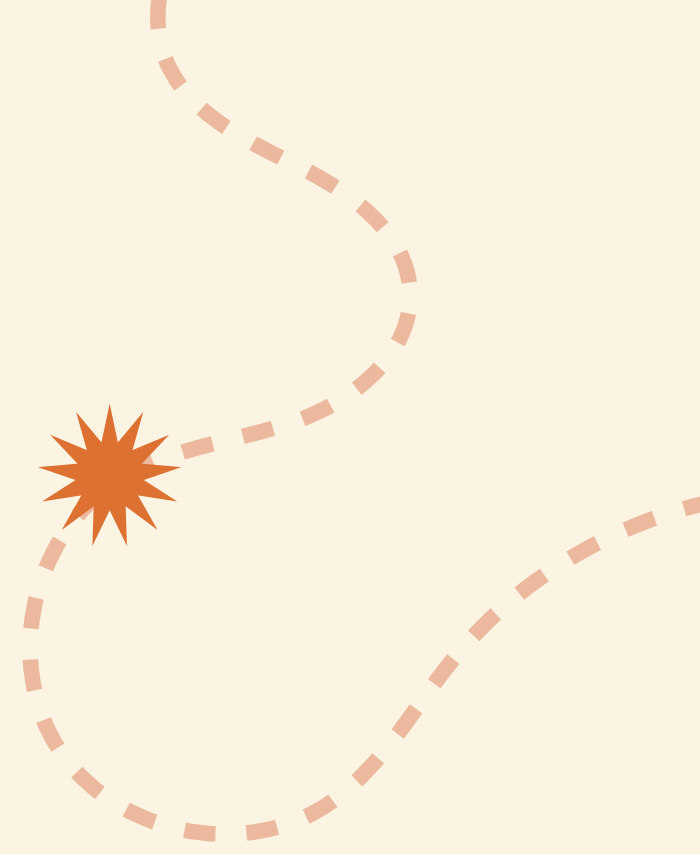
- If you were starting your school from scratch tomorrow, what is one thing you would intentionally build into the culture from day one?
- What is one step you can take to create stronger alignment among your school's priorities, professional learning, and student experiences?
 - What “buckets” can you create?



Discussion



What is one successful process or system at your school that has had a significant impact and would be valuable for a brand-new Early College to implement?



Thank you!

