

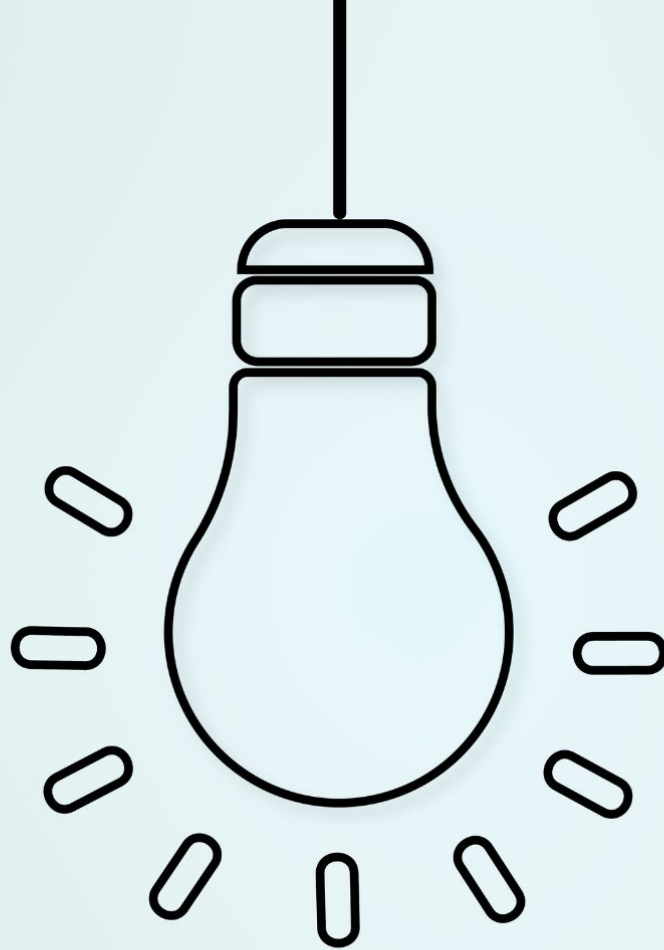
**2026
EARLY COLLEGE
SUMMIT**



JUNE 9 –10, 2026

Future Ready: Empowering Learners for Success

**Role Alike Networking
Session
Humanities Teachers & Coaches**

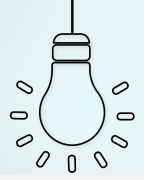


Idea Harvest

Purpose

Share & honor professional success as something we can all learn from.

Inspire peers and identify practices worth sustaining or scaling

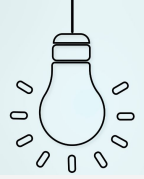


Group 1

Describe 1 Insight That Surprised You

List 3 Enabling Conditions

Share 1 Group Take Away



Group 2

List 3 Enabling Conditions

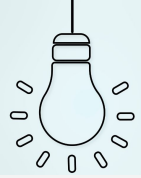
- High expectations and student accountability
- Strong support systems (EC teacher, office hours, tutoring)
- Student ownership and engagement through choice and creativity

Describe 1 Insight That Surprised You

All of our enabling conditions applied to three totally different scenarios (EOC data, innovation project, plan for a literature study).

Share 1 Group Take Away

Students perform best when they are active partners in learning rather than passive participants.



Group 3

List 3 Enabling Conditions

Student-Teacher
relationships

All three stories had a sense
of efficacy

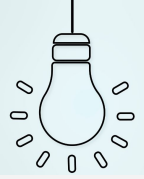
Efficacy “snowballed”

Describe 1 Insight That Surprised You

Salt of the earth teaching is still the best - technology isn't always the best teaching for lasting impact on students.

Share 1 Group Take Away

Real educational transformation happens when lessons connect directly to real life, teachers balance high warmth with high expectations, and schools leverage peer-to-peer collaboration to scale success.



Group 4

List 3 Enabling Conditions

Master schedule (Early Release on Fridays)

Relationships with peers in small school setting

Supportive administration; not micromanaging in curricular areas.

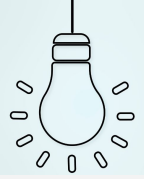
Describe 1 Insight That Surprised You

Professional success loosely defined; some were school related others more individual.

Juniors have little to no experience doing research through a scholarly database (not Google).

Share 1 Group Take Away

Collaboration across subject areas creates a more accessible environment for students to connect ideas.



Group 5

List 3 Enabling Conditions

Strong relationships.

Courage to self-reflect.

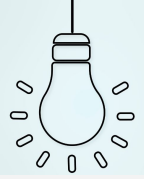
Courage to overcome knowledge-gaps.

Describe 1 Insight That Surprised You

We're continually surprised at the disconnect between the public's perception of EC's mission and that of our own students.

Share 1 Group Take Away

I'm proud of ya'll!



Group 6

List 3 Enabling Conditions

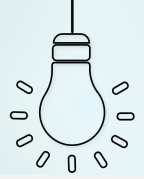
- Faculty and Student Accountability
- Support systems to raise teacher accountability
- Communication across all levels

Describe 1 Insight That Surprised You

- All Teachers in Massachusetts must have an SEI endorsement
- Everything we did had to have buy-in from stakeholders

Share 1 Group Take Away

Investing in adults/students can lead to a common purpose.



Group 7

List 3 Enabling Conditions

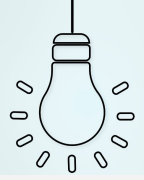
- > admin support of the teacher's work in the classroom
- > teachers did their own homework in determining what students need and creating the approach/materials that could better address that need
- > student-serving choices

Describe 1 Insight That Surprised You

How much we all value creativity and how it's central to good teaching and gaining traction with students.

Share 1 Group Take Away

We should give them success through admin support, careful and intentional lesson design, and letting creativity and sound rationale for our classroom choices guiding what we do or what we change. Classroom autonomy.



Group 8

Describe 1 Insight That Surprised You

List 3 Enabling Conditions

Share 1 Group Take Away



Group 9

Describe 1 Insight That Surprised You

List 3 Enabling Conditions

Share 1 Group Take Away



Group 10

Describe 1 Insight That Surprised You

List 3 Enabling Conditions

Share 1 Group Take Away