

**The Pour *Into*
EFFECT**



Serve the Best Lemonade

The Power of Relationships in Supporting
Student Mental Health.

www.kyleagreene.com
Instagram: KyleSpeaks_

9 Seconds..... June 17, 2015



Pictured left to right are: Thomasina C. Tyler, Kyle Green, Pamela Singleton, Representative Clementa Pinckney, Joy Nesmith, Kenard Brown, Melanie Nesmith, April Bright and Lafarrah Brantley



4 Key Takeaways from *Serve the Best Lemonade*:

1. **Relationships Before Results**

Students are more likely to grow, engage, and succeed when they feel seen, safe, valued, and connected. Before students fully receive instruction, they often need connection, consistency, and care.

2. **Every Student Has Hidden Potential**

Behavior isn't always defiance. Sometimes it's pain, fear, trauma, frustration, or a cry for connection. Great educators and leaders learn to look beyond the surface and see the greatness still developing underneath.

3. **Your Presence Has Power**

The words you speak, the energy you bring, and the environment you create can help shape a student's confidence. Identity, and future. NEVER underestimate the ripple effect of one caring adult.

4. **Remember Your Why**

In the chaos of work, deadlines, testing, and behavior issues; don't forget the deeper reason you chose this work. When you're anchored in your *why*, you serve with passion, patience, and power.

Potential for Greatness



The greatest truth must be recognition that in every man, in every child is the potential for greatness.

— *Robert Kennedy* —

AZ QUOTES



What special piece of
yourself are you pouring
into the lives of the
students that you serve?



Your story

“The most powerful person in the world is the storyteller. The storyteller sets the vision, values and agenda of an entire generation that is to come.”

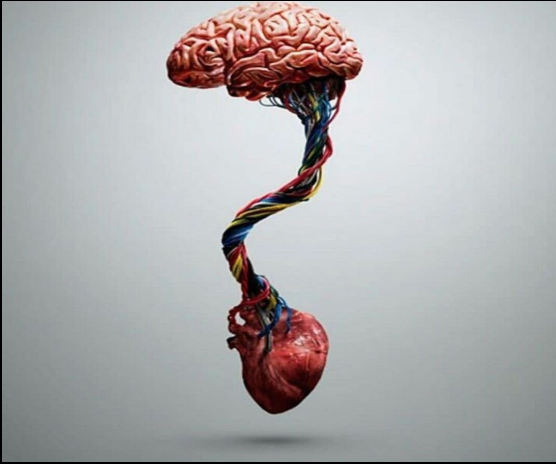
Unique, *yet* united



If you choose to create a lasting and meaningful connection with students that will lead to their success don't be afraid to share **CERTAIN** parts of your story.

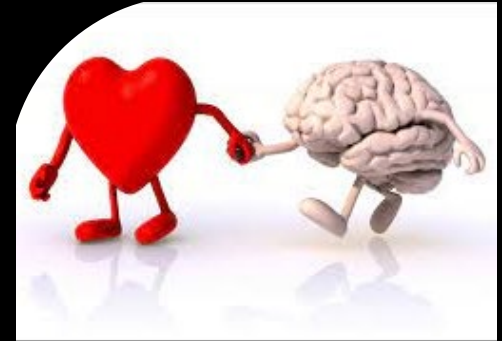
YOUR STORY  YOUR
MATTERS

Connect to their hearts so that you can connect to their minds.



Heart connections help to establish trust **relationships** between the student and the teacher. The student and the counselor. Student and administrator.

Connections then help to form **relationships** and **genuine relationships** create sustained **IMPACT**.



Students don't care how much
you know until they know how
much you care...

**ABOUT
THEM!**



A picture is worth a thousand words... MY STORY



My story!



Meet Zenith Greene...
my mother

**Forgiveness is for
YOU!**



My story!



Meet Bruce Beasley...

My father

**Presence vs.
presents!**

My story!



I couldn't read until the
8th grade.

**Amazon three-time
self-published
author**



My story!



My first book...

The Mentality Changer





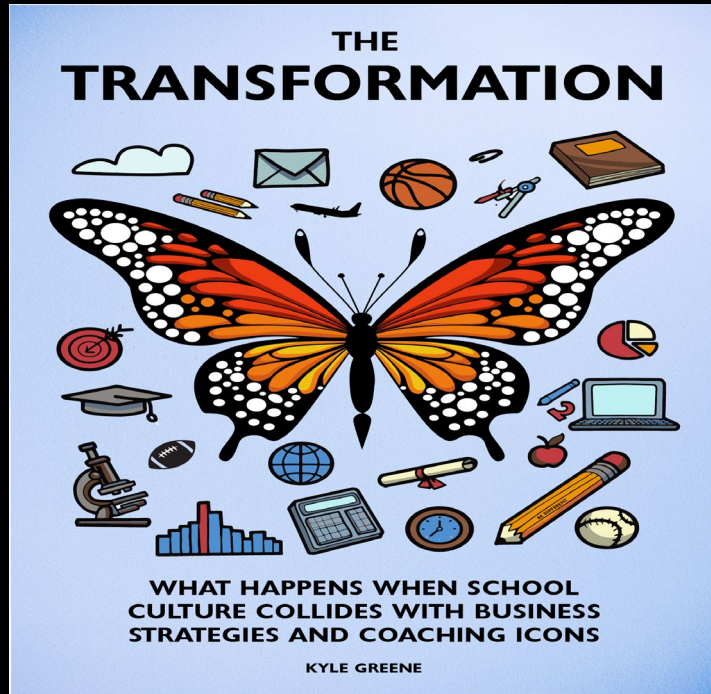
In Loving Memory

How would you like to be remembered as a counselor? What will be your legacy?



NEW BOOK!

Now available on Amazon



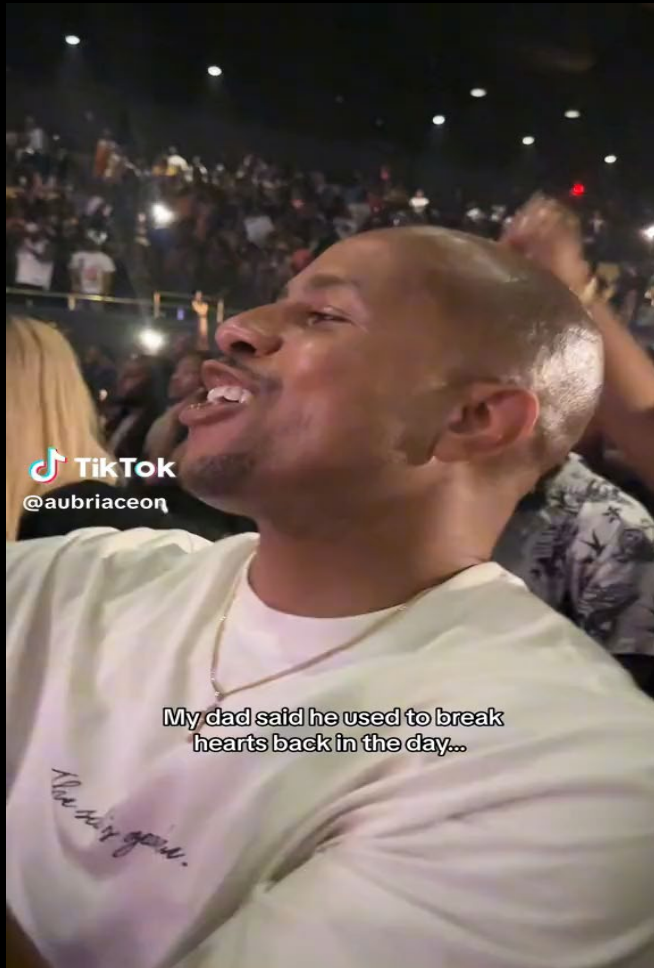
My story!



Meet Aubria “Bri” Greene...
my daughter

**Mistakes don't make
YOU a mistake!**





GUESS WHO WENT SUPER VIRAL



theshaderoom



**Oh, So Your Dad Used To Break Hearts?!
This New Trend Has TikTok Users Showing
Their Dads Back In The Day** 



Liked by aubriaceon and 335,534 others

theshaderoom #PressPlay: Whew! 😭 The #breakingmyheartchallenge will have you weak in the knees. 😭 Y'all dads were nothing to play with back in the... more

View all 16,179 comments

My story!



Meet Irene Gaston Green...
my grandma

Who is your
WHY?

The house that raised me.



My story!



Meet Kyle “KJ” Greene...

my son

**Sacrifices. What are
YOU willing to
GIVE UP!**



My Story = My HIStory



I need to ask you a **serious question.**

Which set of lenses are you viewing your students from?



Are you focusing on the now or the later?

What your students can become someday!

What do y'all think
I used to get into
the most trouble
for as a kid?



YOU TALK TOO MUCH 



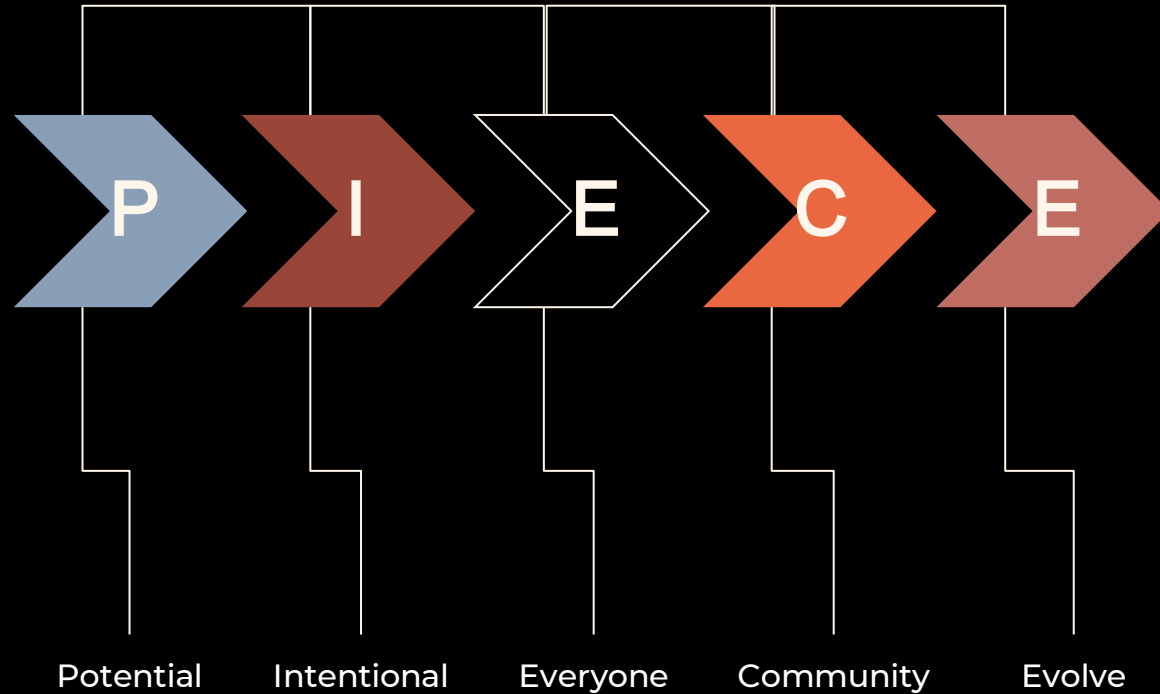
THE POUR INTO **EFFECT!**



POURING INTO OTHERS



Your Special P.I.E.C.E.





Good Student Equity (G.S.E.)

How do you create good equity in your students?

- ◆ Share certain parts of your story.
- ◆ Make heart connections.
- ◆ Be intentional.
- ◆ Be committed to the success of “ALL” students.
- ◆ Build a culture of greatness within your office, school, and self.

The most important thing you can do to create good equity in your students is to show them that genuinely care about them.





South Carolina State Fair







Let's make some lemonade.

Benefits of lemons:

Good for bad breath.

Improve skin quality.

Supports weight loss.

Help prevent kidney stones.

Boosts immunity.

Have a good day!





Thank YOU!

Please complete my survey.

www.kyleagreene.com
Kyle@Kyleagreene.com
KyleSpeaks_



CREDITS: This presentation template was created by **Slidesgo**, and includes icons by **Flaticon** and infographics & images by **Freepik**



Give feedback to Kyle

Scan this QR code



Or go to

<https://talk.ac/kylegreene>

and enter this code when prompted

Powered By 

