



**Connecting and Empowering Communities Through
Map Guides to Inventory Trees Within Their Communities**



**WASHINGTON STATE
UNIVERSITY**

**Urban Forest
Health Lab**

treehealth.wsu.edu

Why trees are important...

+ Air Purification

+ Mental Health Improvements

- Maintenance Burden

+ Reduced Driving Speeds

+ Habitat for Wildlife

+ Reduced Summer Temperatures

+ Stormwater Capture

+ Building Energy Savings

+ Reduced Noise Pollution



The Problem...

City of Tacoma wants to expand its urban canopy...

City needs to know what spaces within the Right-of-Way (ROW) are available for planting trees...

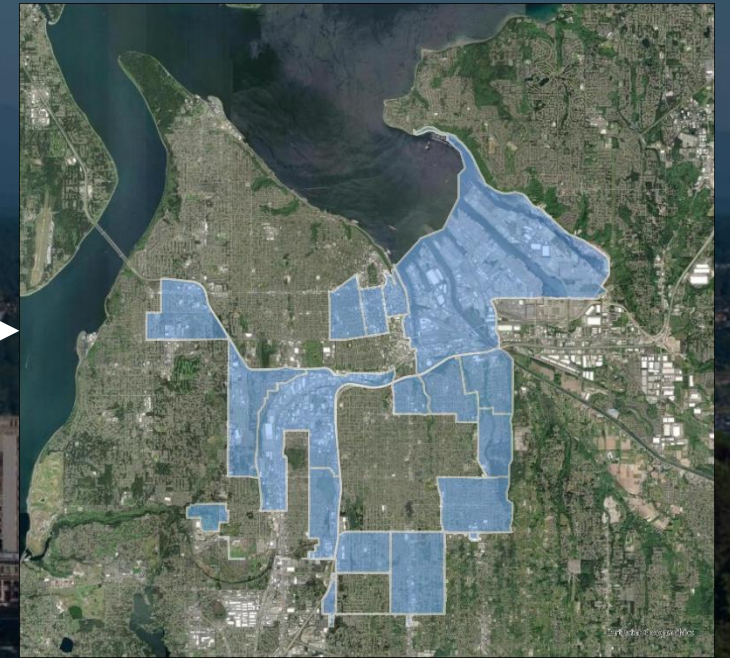
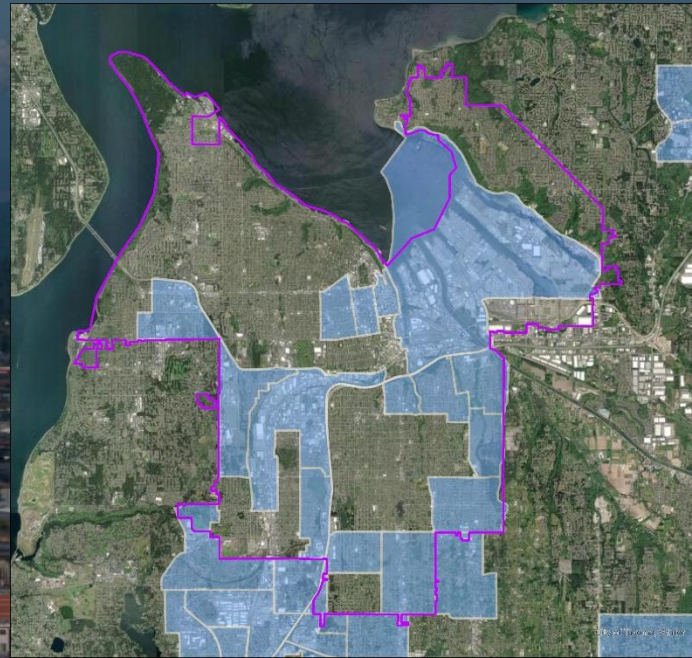
Tree inventories are expensive and require a lot of resources...

Community-based volunteering offers a cost-effective solution however...

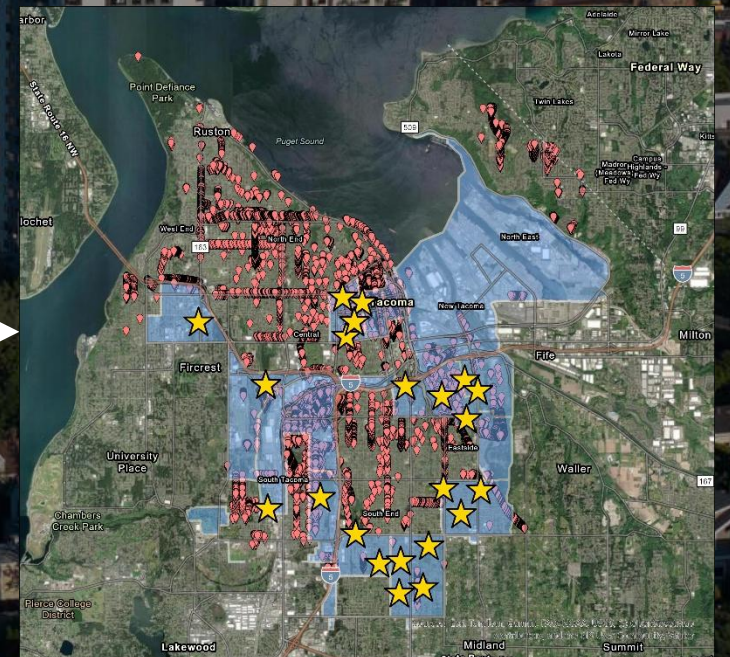
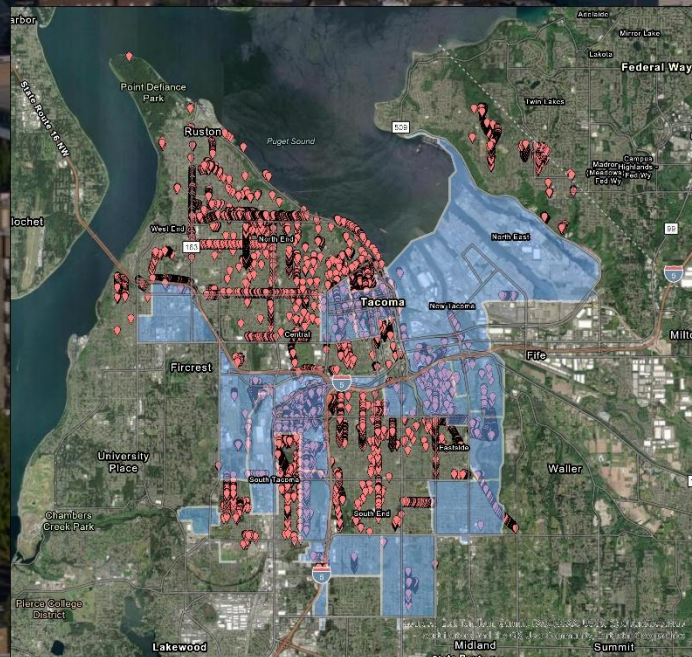
How do you guide volunteers effectively over large spatial scales?

The Workflow...

1. Identify CEJST disadvantages regions within City of Tacoma boundary and clip

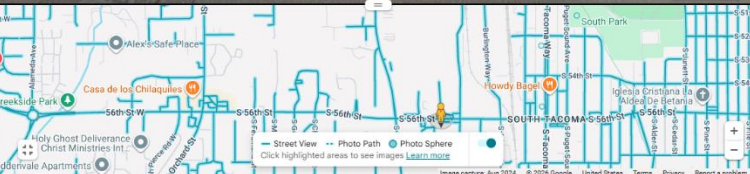
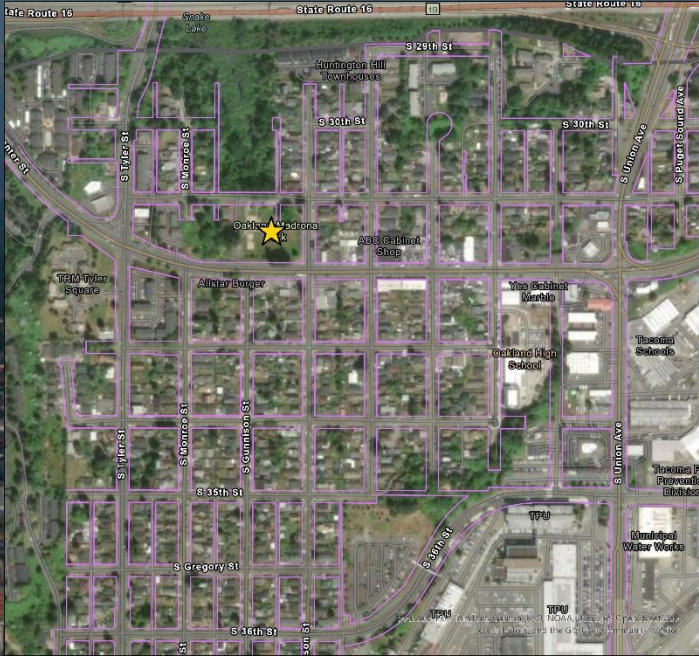


2. Assign meeting locations within or near each CEJST site based on parking and public accessibility and current tree inventory data



3. Based on meeting location outline City ROW layers for volunteers to follow

4. Verify ROW pathway accessibility and outlines on map via Google Streetview



Funding for this project was provided by Washington's Department of Natural Resources 2024 Washington Community Forestry Assistance Grants.



WASHINGTON STATE DEPT OF
**NATURAL
RESOURCES**



Connecting and Empowering Communities Through
Map Guides to Inventory Trees Within Their Communities



WASHINGTON STATE
UNIVERSITY

Urban Forest
Health Lab

treehealth.wsu.edu