

# Monarch Candidate Conservation Agreement with Assurances (CCAA)

New Hampshire Department of Transportation  
Enrollment



# Endangered Species Act 1973

Section 7 - federal agency actions

Section 9 - "Take"

Section 10 - Exceptions to "Take" through permits

Section 4 (listing of species)

- list the species as endangered or threatened;
- find that a listing is warranted but precluded;
- find that listing is not warranted.



# Candidate Conservation Agreement with Assurances (CCAAs)

- Candidate species = candidates for listing under ESA
- Formal, Voluntary agreements with USFWS that address conservation needs

Gopher Tortoise CCA © USFWS



Goose Creek Milkvetch © Nevada Natural Heritage  
(success- listing no longer warranted)



Greater Sage Grouse CCAA © USFWS



Quail County CCAA © Tall Timbers



Bumble Bee CBA (11 species) © USFWS

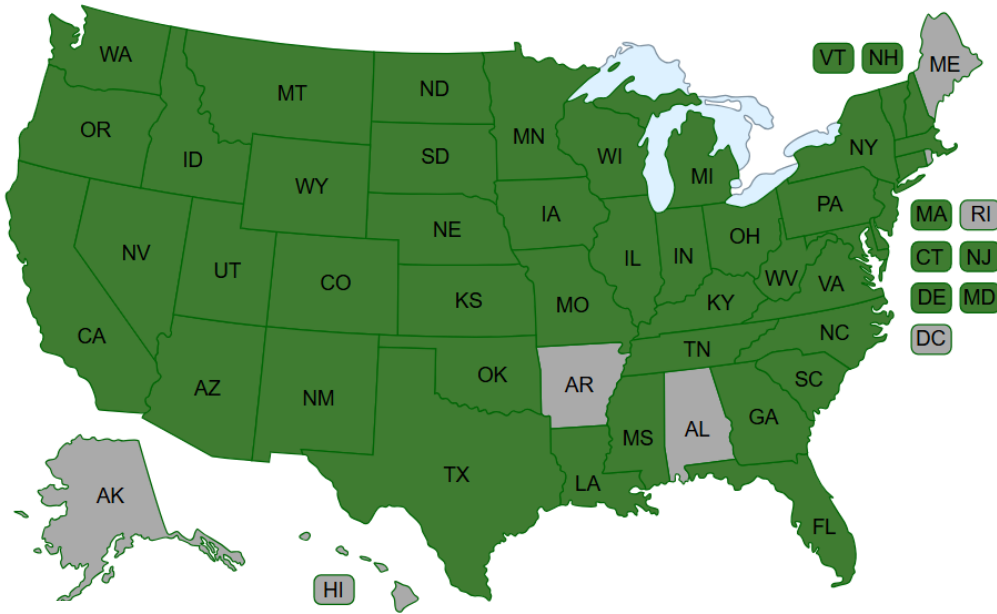


\*The U.S. Fish & Wildlife Service will review the monarch's status each year as part of their Candidate Notice of Review, and if a change in status is warranted, they may take action sooner.

\*\*Within 12 months of proposed rule, followed by Effective Listing Date 30 days later.

# Nationwide CCA for Monarch Butterfly on Energy and Transportation Lands

## Certificates of Inclusion Issued to Date



### Certificates of Inclusion in New Hampshire:

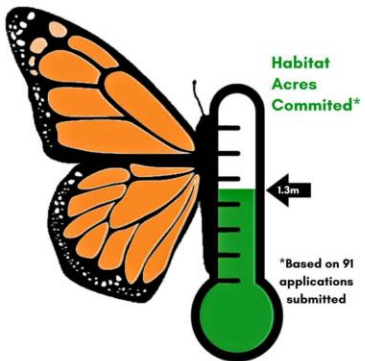
- National Grid
- Vermont Electric Power Company
- Eversource

### Certificates of Inclusion in Vermont:

- National Grid
- Vermont Agency of Transportation
  - Contact: Glenn Gingras –  
[Email](#)
- Vermont Electric Power Company

### Certificates of Inclusion in Massachusetts:

- National Grid
- Massachusetts Department of Transportation
- Eversource



As of 4/8/2026 (1.3 million acres over 91 applications)  
(<https://rightofway.erc.uic.edu/national-monarch-cca/cca-enrollment/>)

## Key Benefits

1. Protect your company or organization from risks related to regulatory uncertainty.
2. Avoid potential project delays or added maintenance costs.
3. Streamline regulatory processes that can add costs and impact construction timelines.
4. Generate positive public perception by demonstrating conservation commitments.
5. Encourage public-private partnerships that create a net-benefit for both conservation and business interests.



**Enrolled acres:** extent of lands that they may desire regulatory assurances on, in the event that monarch butterfly is listed under the Endangered Species Act.

*- If not enrolling, each project would have to consider which activities could impact monarchs or their habitat*

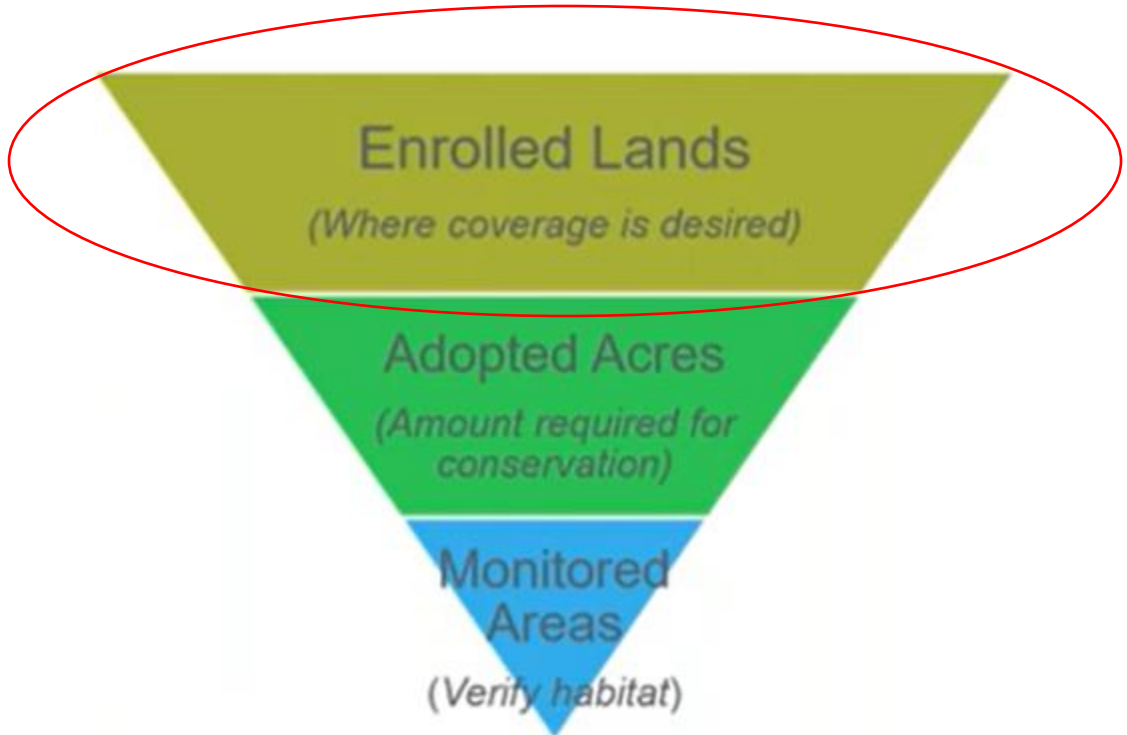
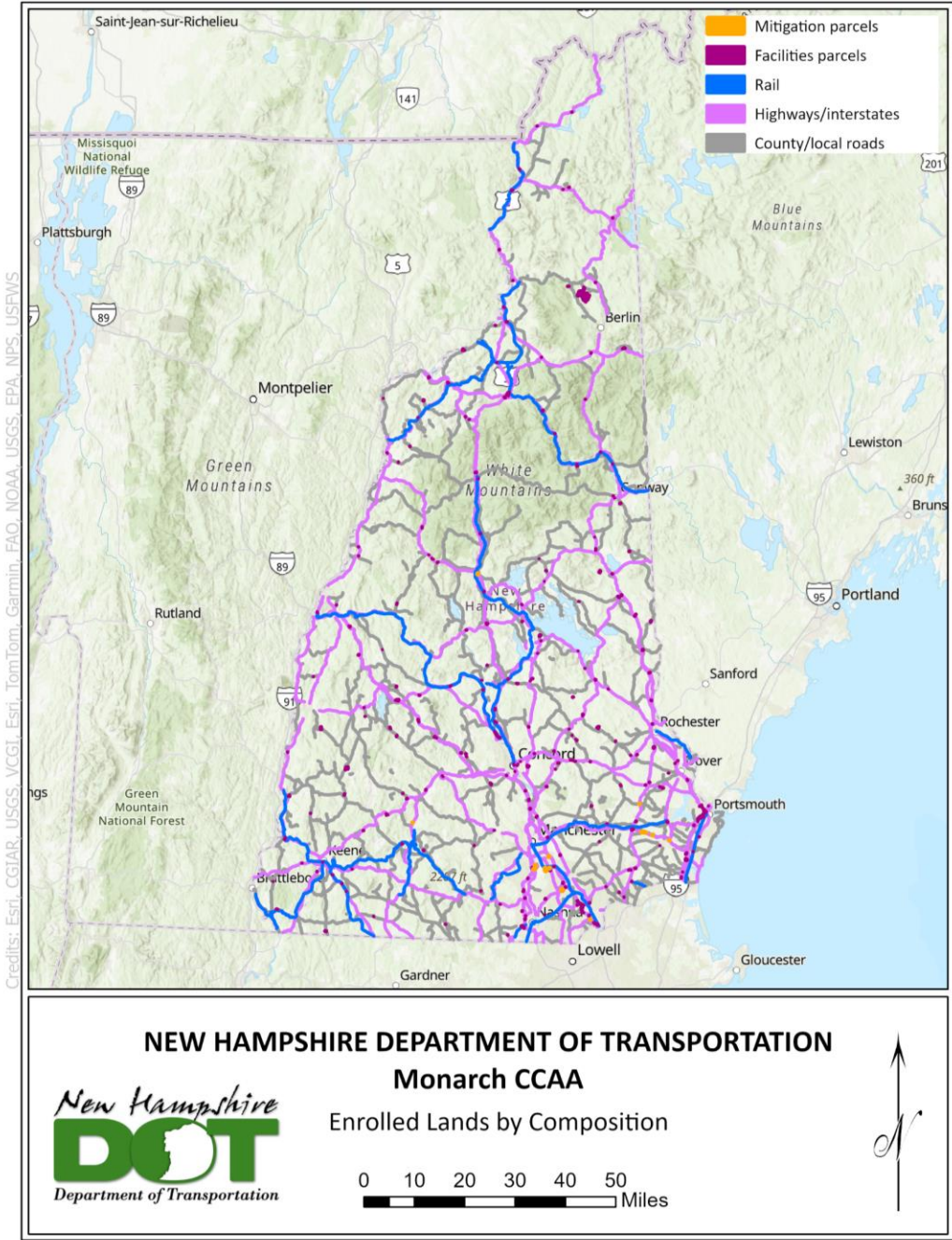
Lands unlikely to contain monarch habitat, such as open water, paved areas, or industrial/developed lands do not need to be enrolled since the probability of future monarch take on these lands is very low

Once in the program, all maintenance activities listed in the application (including mowing) can occur 'business as usual' with no USFWS coordination (excluding adopted acres)



Figure © 2026 Rights-of-way as Habitat Working Group

1. Contact UIC/preapplication meeting  
Prepare and submit application  
Submit implementation plan
2. UIC/USFWS reviews application and issues COI
3. NHDOT implements measures and tracks effectiveness
4. Within 5 years of full implementation, NHDOT provides yearly reports/monitoring



**NHDOT Enrolled Lands (=Area of Coverage)**

1. Highways/Interstates
  - i. Tier 1 roadways (statewide corridors, divided highways)
  - ii. Tier 2 roadways (statewide corridors, other)
  - iii. NHDOT Facilities parcels
2. County/Local Roads
  - i. Tier 3 roadways (regional connectors)
  - ii. Tier 4 roadways (local connectors)
  - iii. Tier 6 roadways (private)
  - iv. Mitigation parcels
3. Rail NHDOT

Roads\_DOT

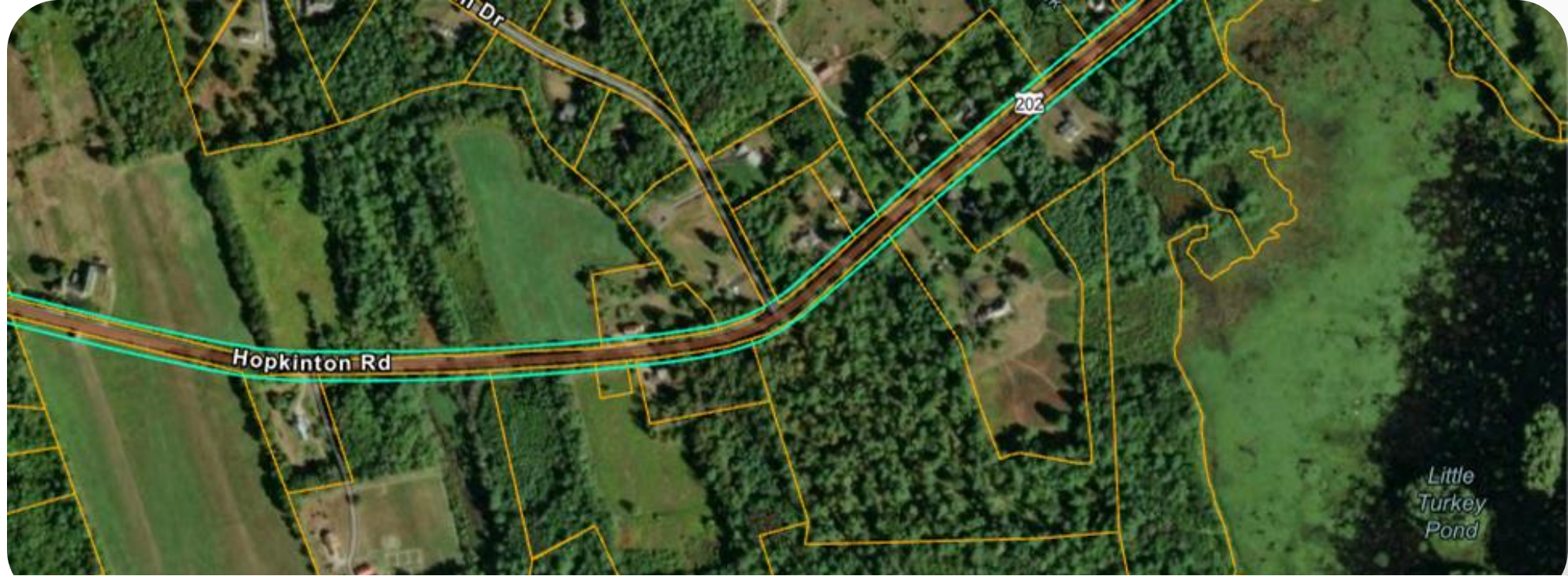
Field: Add Calculate Selection: Select By Attributes Zoom To Switch Clear Delete Copy

ID	TIER	TIER_DESCR	LC_LEGEND	LEGIS_CLAS	WINTER_MAI	SUMMER_MAI	JURISDICTI	JURISDIC_1
33991	5	Local Roads	Local	V	TOWN	TOWN	TOWN	TOWN
33992	5	Local Roads	Local	V	TOWN	TOWN	TOWN	TOWN
33993	0		Private	0	PRIVATE	PRIVATE	PRIVATE	PRIVATE
33994	3	Regional Corridors	State	II	314	314	314	DISTRICT 3
33995	3	Regional Corridors	State	II	314	314	314	DISTRICT 3
33996	3	Regional Corridors	State	II	314	314	314	DISTRICT 3
33997	3	Regional Corridors	State	II	314	314	314	DISTRICT 3
33998	3	Regional Corridors	State	II	314	314	314	DISTRICT 3

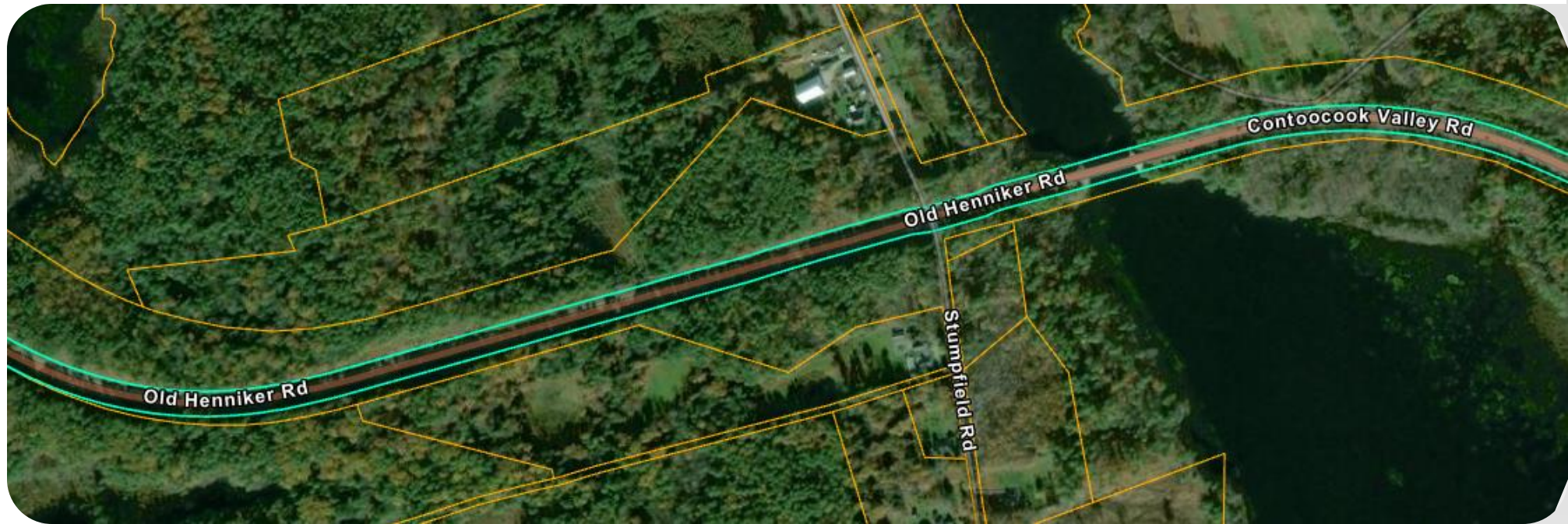
0 of 112,695 selected Filters:

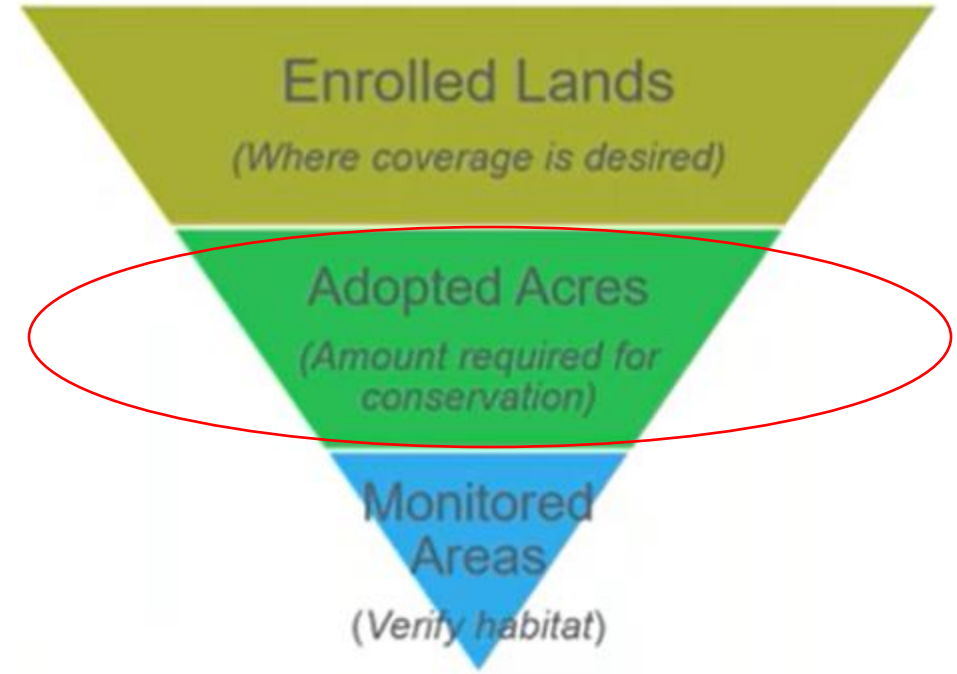
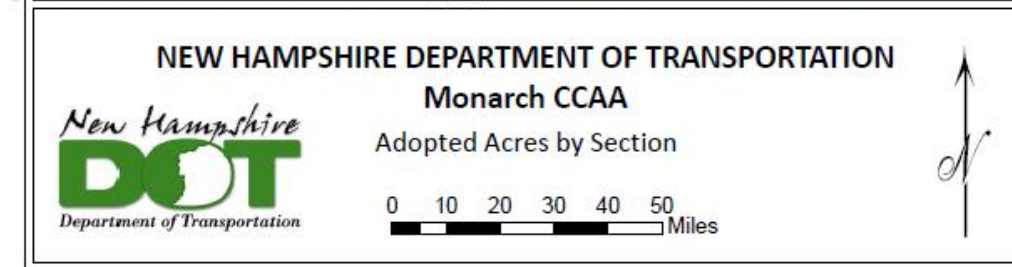
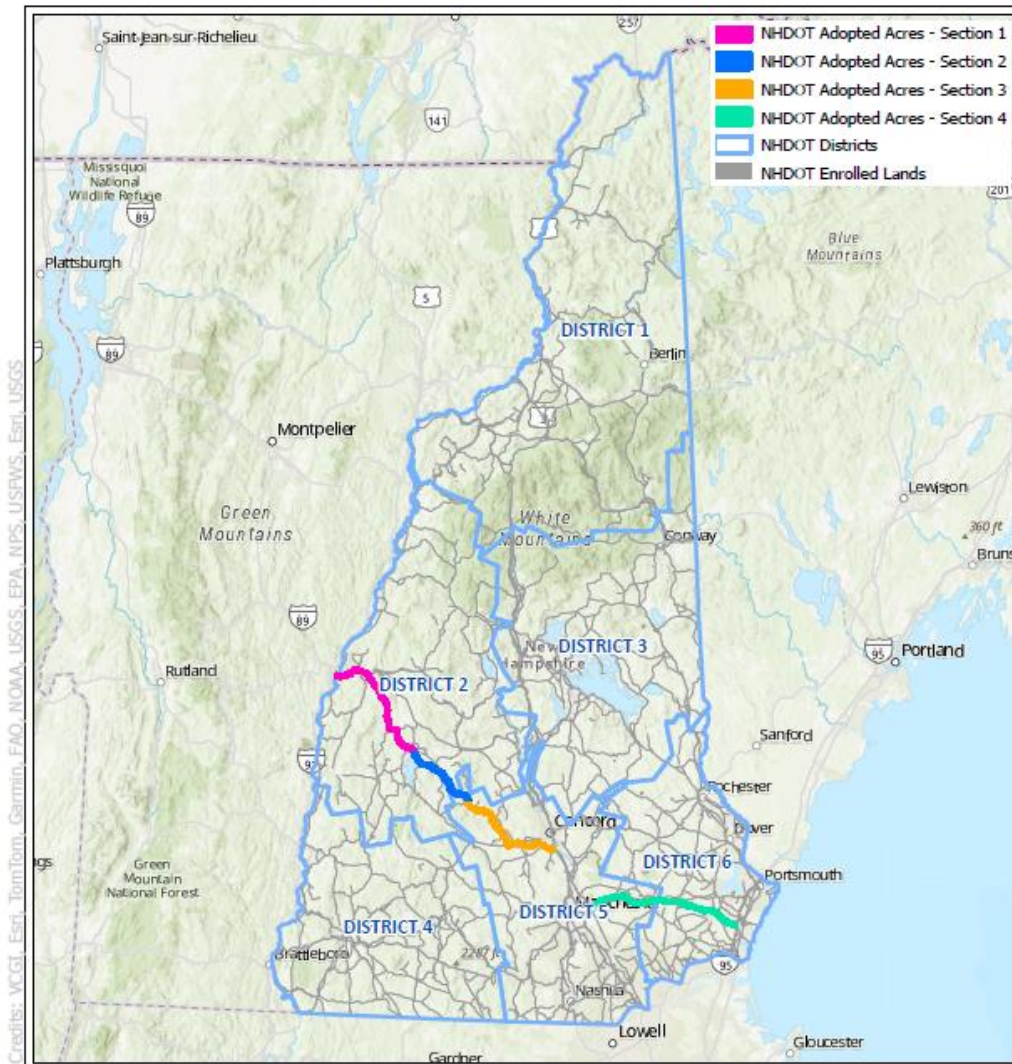
Tier 2 roadway:

*E on NH Route  
202 in Concord*



*W of Concord,  
NH Route 202 in  
Hopkinton*





**NHDOT Adopted Acres (=Areas receiving conservation measures)**

- Section 1:** Interstate 89 from Lebanon to New London
- Section 2:** Interstate 89 from New London to Warner
- Section 3:** Interstate 89 from Warner to Bow
- Section 4:** NH Route 101 from Manchester to Hampton



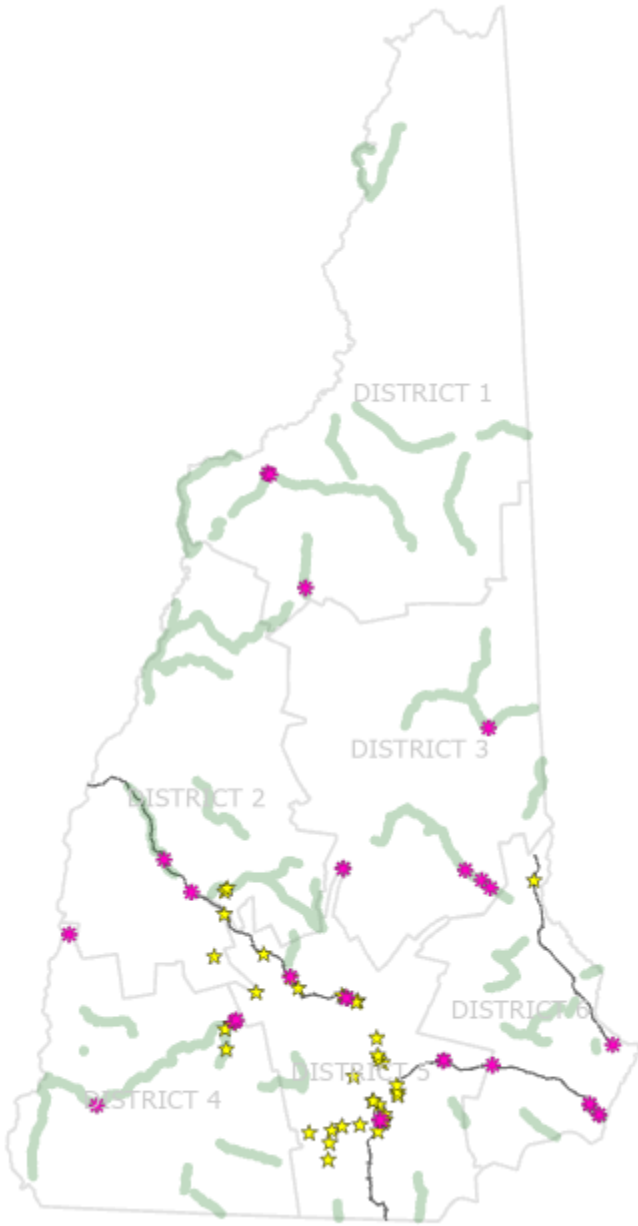
## Selecting Adopted Acres

> Select conservation measures that address key threats to suitable habitat on your system:

- Threat 1. Conversion of habitat
- Threat 2. Habitat loss through herbicide use
- Threat 3. Habitat loss through mowing

Conservation Measure
Seeding and planting to restore or create habitat
Conservation mowing to enhance floral resource habitat
Targeted herbicide treatments
Prescribed burning to promote suitable habitat
Controlled grazing to promote suitable habitat
Brush removal to promote suitable habitat
Suitable habitat set-asides (temporary or permanent)

# Selecting Adopted Acres

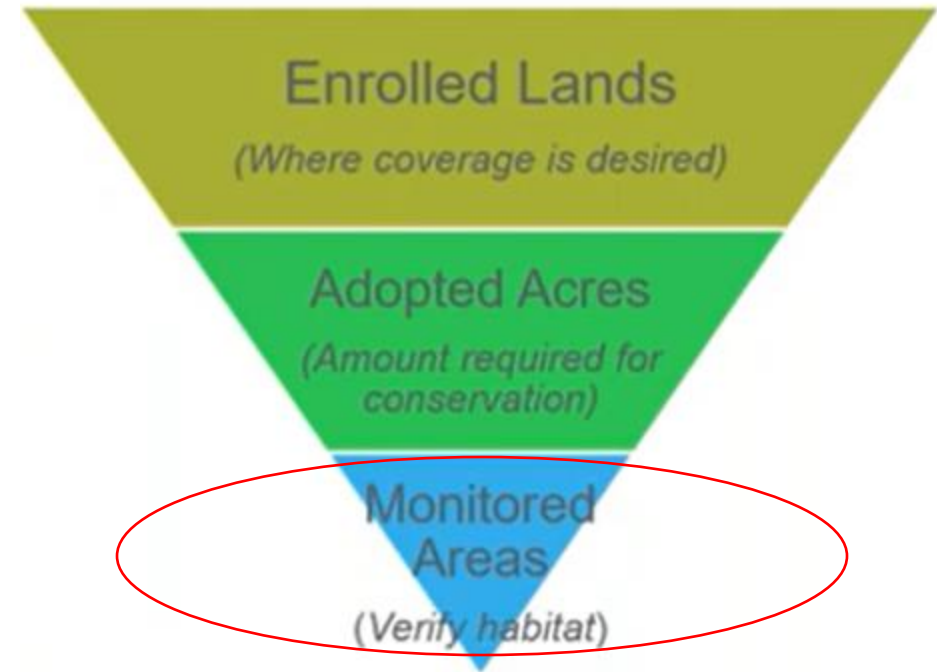
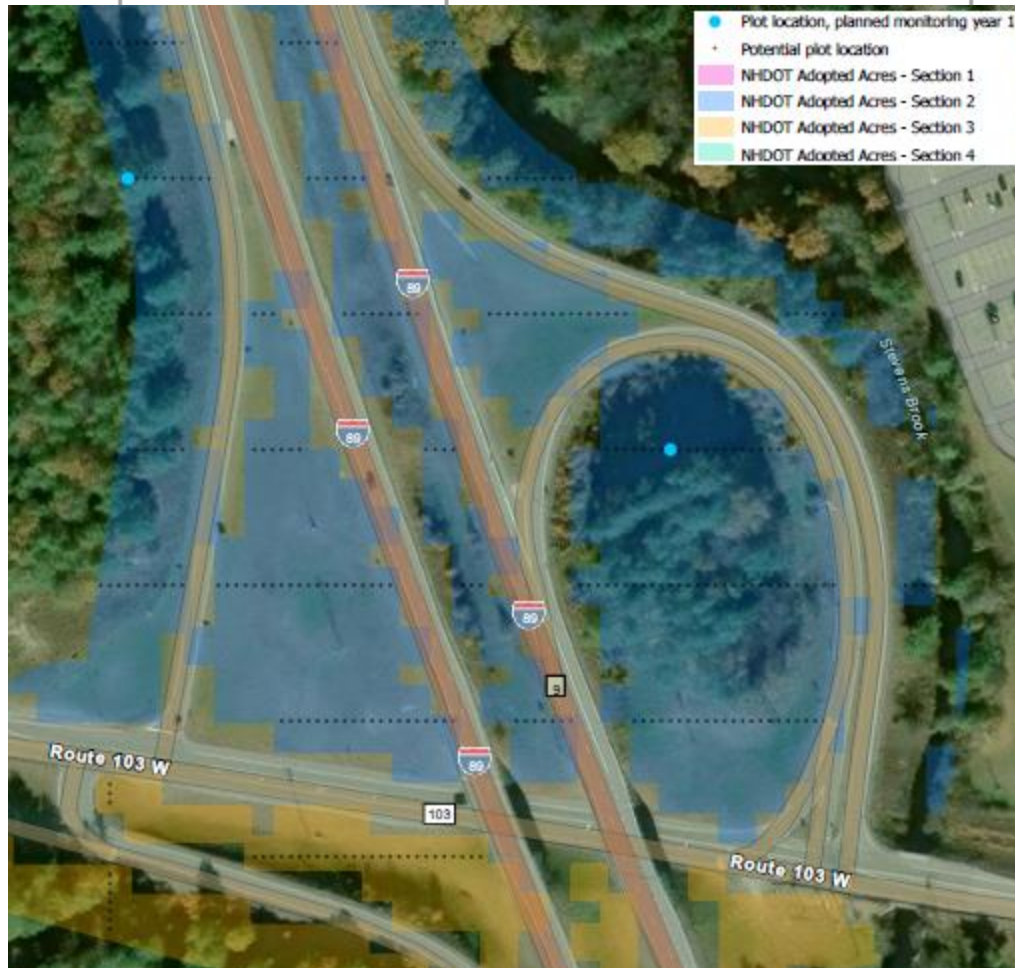


	no developed impervious, open water, cliff and talus
I89 habitat	1695.6368
SpTpk habitat	629.6757
Rte101 habitat	639.62
EvTpk habitat	453.256



Table 14-4. Sampling Frequency Expected for Biological Effectiveness Monitoring

Estimated Adopted Acres	Anticipated No. of Annual Samples
Fewer than 1,000	10
1,001 to 10,000	30
10,001 to 30,000	50



### Habitat Monitoring on Subset of Adopted Acres

- Ensures suitable for monarchs
  - 90% of plots sampled must either:
    - *contain 6 or more milkweed stems*
    - *Have 10% or more cover by flowering nectar plants*
- Rate of 30 plots annually



# Reporting and Adaptive Management

- Annual compliance reporting
- Effectiveness monitoring

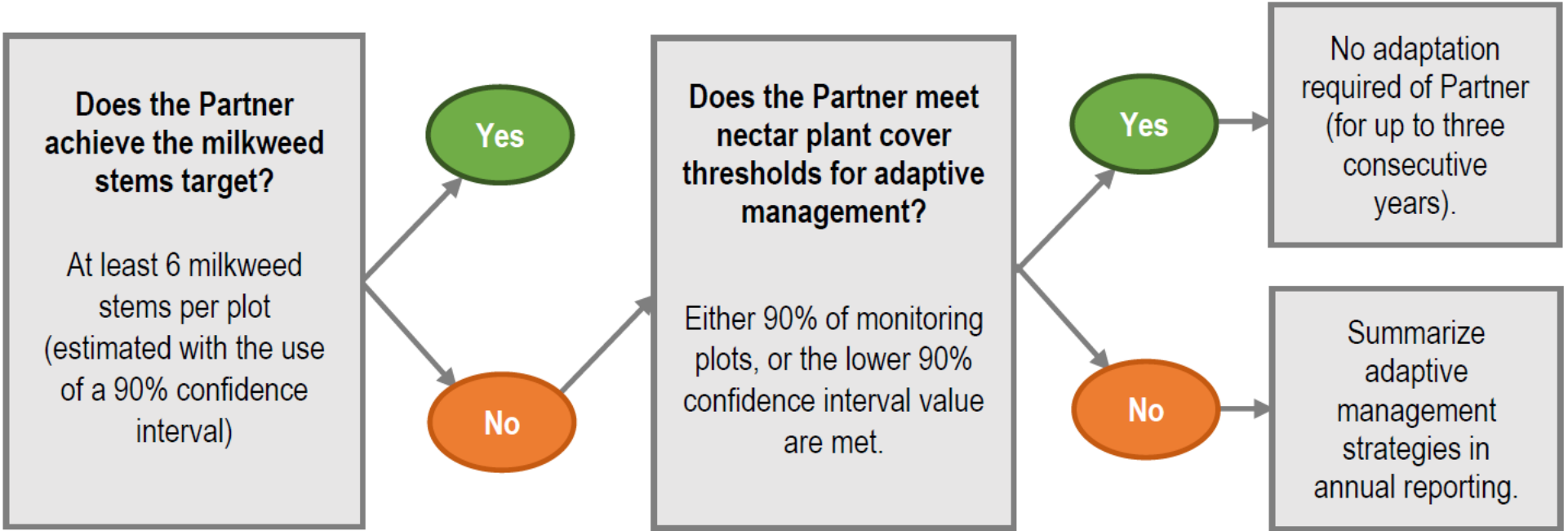


Figure © 2026 The Board of Trustees of the University of Illinois



# Questions?

[rebecca.a.martin@dot.nh.gov](mailto:rebecca.a.martin@dot.nh.gov)  
[jobrien@normandeau.com](mailto:jobrien@normandeau.com)