




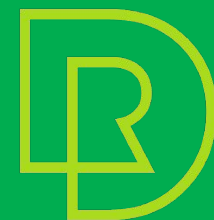
Which Chatbot is Right for me?



What AI models do you use?

A large, stylized letter 'R' in a light green color, positioned on the left side of the slide. It is partially enclosed by a larger, thin green circular outline.

What is Generative AI?



Red Deer
Polytechnic



Red Deer
Polytechnic

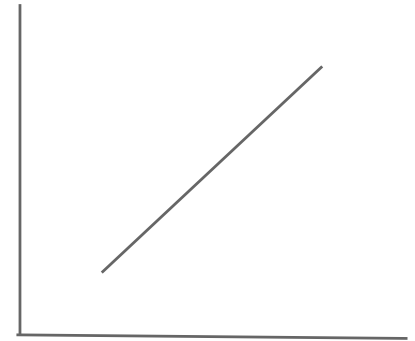
Natural Language Processing (NLP)

- Tokens (lemmatization - base word)
- Web scraping to find words that appear near other words
 - Syntagmatic Association (which word comes next)
 - Paradigmatic Association (similar words surrounding a word must indicate similar meaning)

Large Language Models (LLM)

A neural network (Generative Adversarial Network - GAN) that uses natural language processing (NLP) to generate text.

2018	GPT 1	117 Million Parameters
2019	GPT 2	1,500 Million Parameters
2020	GPT 3	175,000 Million
2023	GPT 4	1,700,000 Million



$$y = mx + b$$

b is a parameter for intercept

m is a parameter for the slope

More parameters

More representations of the relationships between words in the algorithm

Neural Networks

Type of deep learning that assumes hidden layers of information between inputs and outputs

Input:

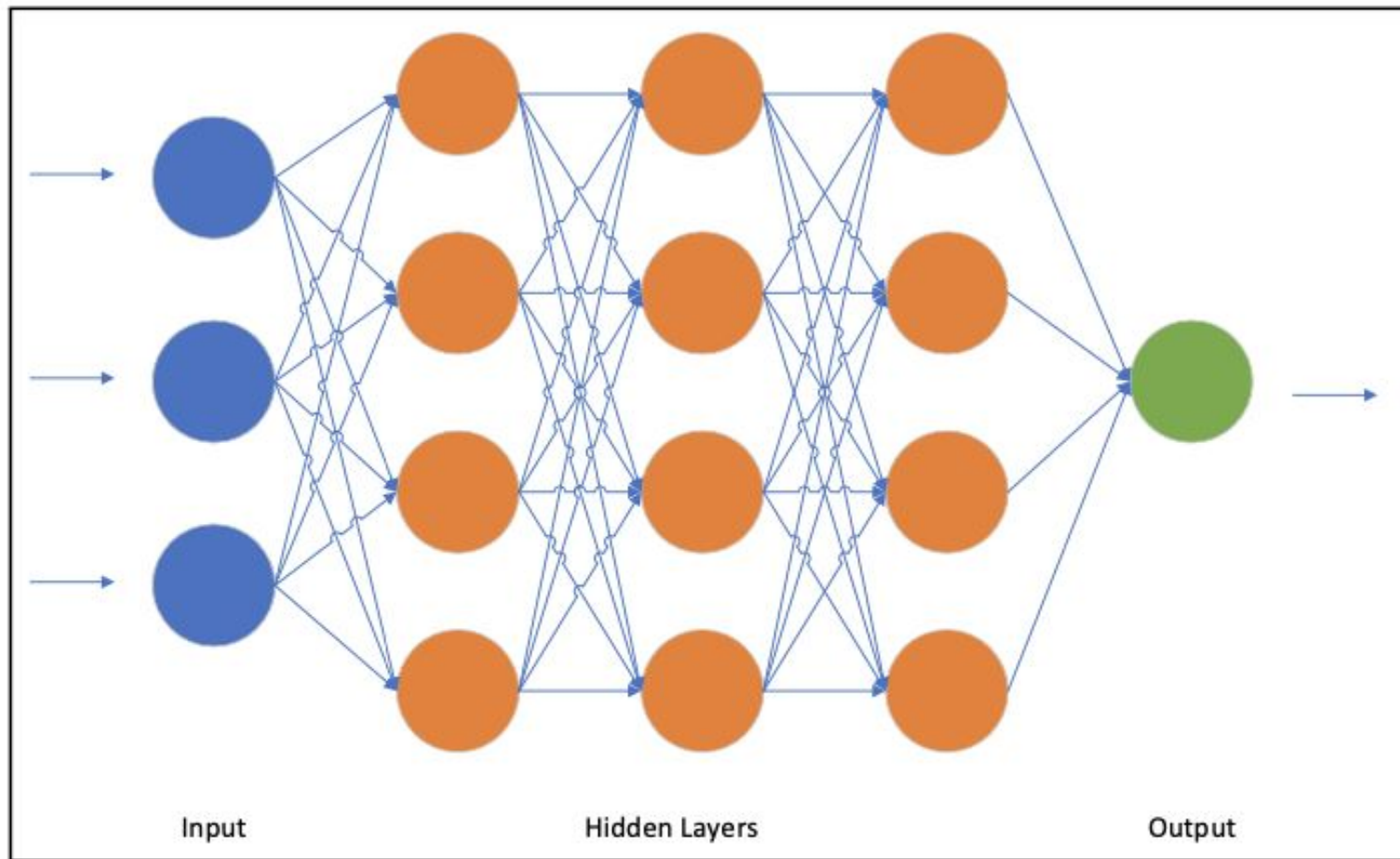


Hidden Layers:

Color Snout shape

Tail shape Tree shape

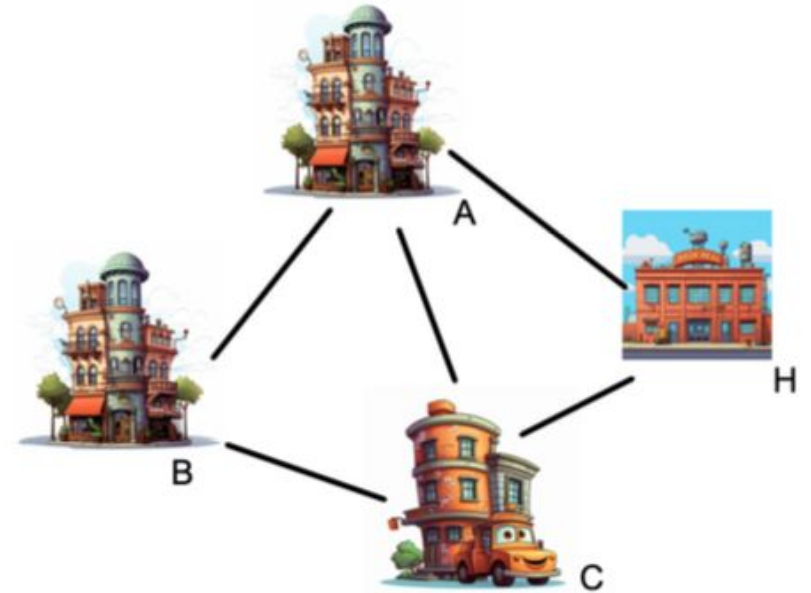
Output: Dog





Reinforced Learning

- Simulate an environment where agents interact with an environment and receive feedback
- Find the optimal sequence of actions



The algorithm attempts to find a route that provides the most profit, recognizing that traveling longer distances incurs more cost, by exploring the routes on the map.



Red Deer
Polytechnic

Generative Adversarial Network (GAN)

- Pairs of Neural Networks (NN) are set up as adversaries to create reinforced learning
- Generate Images - Midjourney
- Generate Text - ChatGPT



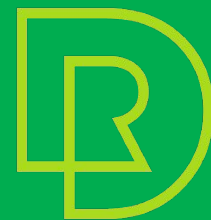
One NN identifies images of a dog. The other NN creates images of a dog. Is the image created identified as a dog? Use one NN to tune the other.



What do you use Generative AI for?

A large, stylized, light green 'R' logo is positioned on the left side of the slide. It consists of a thick, rounded 'R' shape with a circular outline that partially encloses it.

Which AI Model Should I Use?



Red Deer
Polytechnic

Large Language Models (LLM)

ChatGPT

Copilot (Microsoft)

Claude (Anthropic)

DeepSeek

Grammarly

Gemini (Google)

Grok (xAI)

Llama (Meta, Instagram, WhatsApp)

Perplexity



Red Deer
Polytechnic

Best Chatbot

On Device (no wifi)

Anonymity (no log in)

Current Events

Writing Code

Synthetic Data

Structured Reasoning and Process

Empathy

Moral Complexity without Judgment

Create Business Documents

Social Media and Marketing Posts

Academic Research and Citations

Llama

ChatGPT

Gemini (attached to Google Search)

Claude

ChatGPT (text)

Grok (financial)

Claude

ChatGPT

Gemini

ChatGPT

ChatGPT

Perplexity

Best Chatbot

Summarize documents
(without paying for tokens)



Example:
Compare 8
100 page documents

NotebookLM (Gemini)

The screenshot displays the NotebookLM interface. On the left, a 'Sources' panel lists eight PDF documents, all of which are checked. An arrow points from the text 'Example: Compare 8 100 page documents' to this list. The main 'Chat' area contains a question: 'How did the faculty workload and instructional hour norms evolve between 2002 and 2010?'. Below the question, the chat provides a detailed summary of the evolution of workload definitions and instructional hour norms at Red Deer College, including a table comparing 2002 and 2010 norms for Social Work.

Untitled notebook + Create notebook

Sources + Add sources

Search the web for new sources

Select all sources

- 2002 2004.PDF
- 2004 2006.pdf
- 2006 2008.PDF
- 2008 2010.PDF
- 2010 2013.PDF
- 2013 2016.PDF
- 2016 2019.pdf
- FARDP Draft Collective Agreeem...

Chat

How did the faculty workload and instructional hour norms evolve between 2002 and 2010?

Between 2002 and 2010, faculty workload and instructional hour norms at Red Deer College evolved from a model focused primarily on assigned teaching hours to a **"Total Workload"** philosophy. This new approach explicitly incorporated non-teaching responsibilities, such as professional development and college service, into the formal definition of a faculty member's duties ¹ ...

Evolution of Workload Definitions

- **2002–2004:** Workload was defined as the assignment of instructional hours plus "other duties" (e.g., curriculum development, student counseling) and "developmental activities" ⁴ ...
- **2004–2010:** The agreements shifted to a **Total Workload** model ¹ ... For full-time instructors, this consisted of **assigned teaching responsibilities** (preparation, delivery, assessment) and **non-teaching responsibilities** (professional development, departmental duties, and college committees) ¹ ...

Changes in Instructional Hour Norms

While many programs maintained stable norms (typically between **425 and 450 hours** annually), several programs saw significant adjustments:

Program	2002 Norm	2010 Norm
Social Work	480 hours ⁹	425 hours ¹⁰

Start typing... 8 sources →

Grok has historically performed better in math, science, and business

Gemini has seen greatest improvement

Main domain	ChatGPT-5	Gemini 2.5 Flash	Claude Sonnet 4.5	Grok 4	DeepSeek V3.2
Biology & Chemistry	40.4%	50.9%	40.4%	61.4%	10.5%
Engineering & Construction	51.9%	74.1%	33.3%	66.7%	44.4%
Finance & Economics	44.2%	76.7%	41.9%	76.7%	48.8%
Health & Sport	44.8%	46.3%	50.7%	55.2%	47.8%
Math & Conversion	66.7%	83.0%	59.9%	76.9%	74.1%
Physics	34.4%	43.0%	26.6%	43.8%	31.3%
Statistics & Probability	61.3%	80.6%	64.5%	71.0%	64.5%

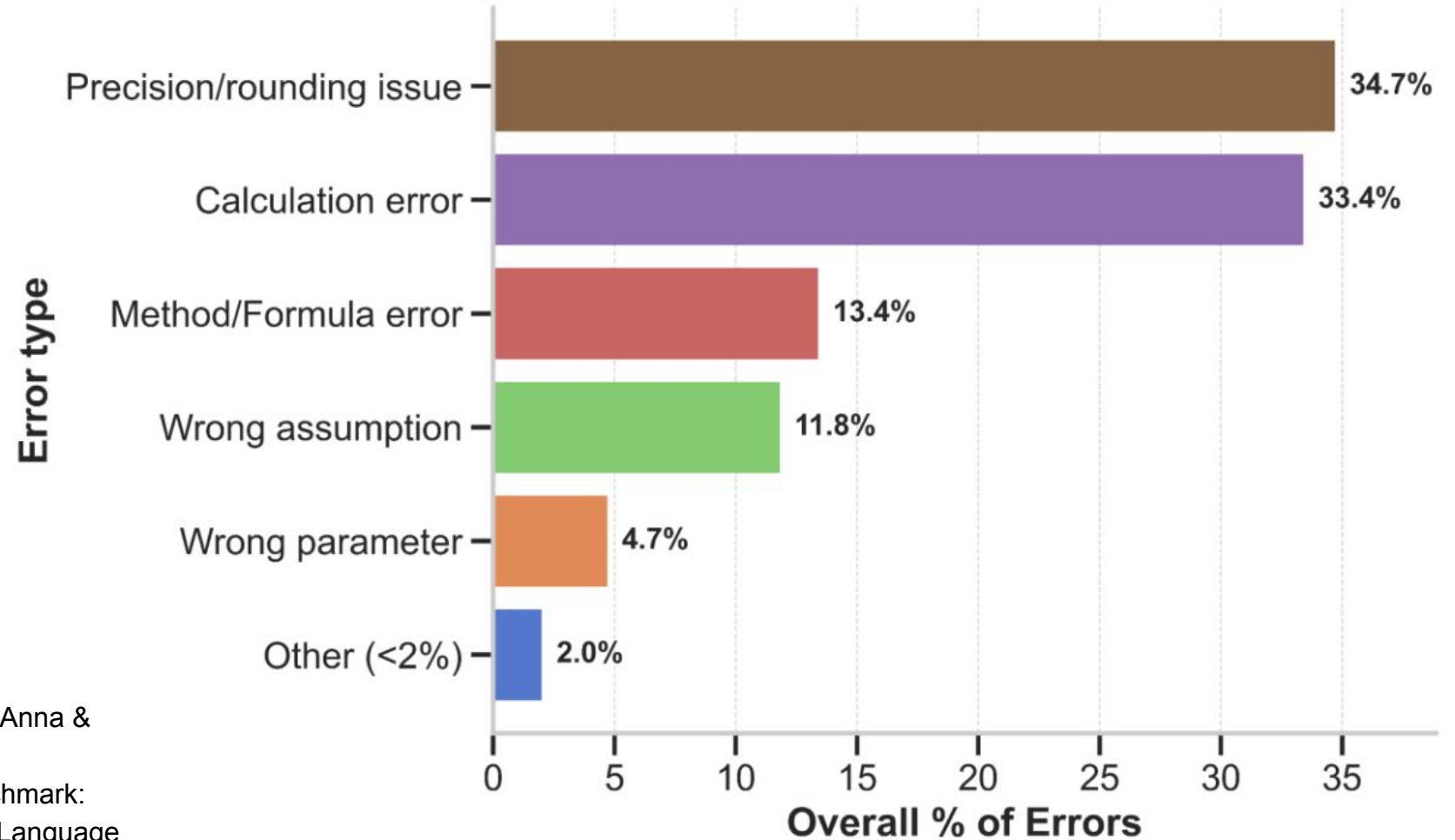
Table 4 presents the detailed accuracy results for five leading AI models across seven main domains, as evaluated in the ORCA benchmark. Models with the highest accuracy in each domain were highlighted in green, while those with the lowest accuracy were marked in red. The table above highlights how model performance varies by subject.

Herambourg, Claudia & Siuda, Dawid & Szczepanek, Anna & Kopczyńska, Julia & Santos, Joao & Sas, Wojciech & Śmietańska-Nowak, Joanna. (2025). The ORCA Benchmark: Evaluating Real-World Calculation Accuracy in Large Language Models. 10.48550/arXiv.2511.02589.

Text Models Can't Do Math

Accuracy of all models is low.

Particularly in Physics, as well as higher levels of science/math



Herambourg, Claudia & Siuda, Dawid & Szczepanek, Anna & Kopczyńska, Julia & Santos, Joao & Sas, Wojciech & Śmietańska-Nowak, Joanna. (2025). The ORCA Benchmark: Evaluating Real-World Calculation Accuracy in Large Language Models. 10.48550/arXiv.2511.02589.

Image Generation from Text

Adobe Firefly (Adobe)

Dall-E (OpenAI)

Canva

Midjourney

Nano Banana (Google)

Paper Banana (Google)



Original
photo

Adobe [\$]



Image Generation from Text

a photorealistic picture of a grizzly bear with early morning light taken at 300 mm and f2.8 eating leaves with lush green grass in the foreground and green bushes in the background. The bear is looking at the camera with its head raised. The bear is standing on all four legs. Its body is visible at a side view.

Midjourney [\$]



Image Generation from Text

a photorealistic picture of a grizzly bear with early morning light taken at 300 mm and f2.8 eating leaves with lush green grass in the foreground and green bushes in the background. The bear is looking at the camera with its head raised. The bear is standing on all four legs. Its body is visible at a side view.

Nano Banana [Gemini]



Gemini.google.com/app



🌟 Hi Stephanie

Where should we start?

📄 a photorealistic picture of a grizzly bear with early morning light taken at 300 mm and f2.8 eating leaves with lush green grass in the foreground and green bushes in the background. The bear is looking at the camera with its head raised. The bear is standing on all four legs. Its body is visible at a side view. ↗

+ 📏 🖼️ Image ×

Fast ▾



🖼️ Create image

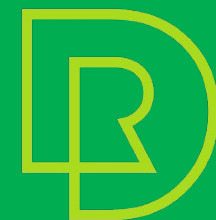
Boost my day

Help me learn

Write anything

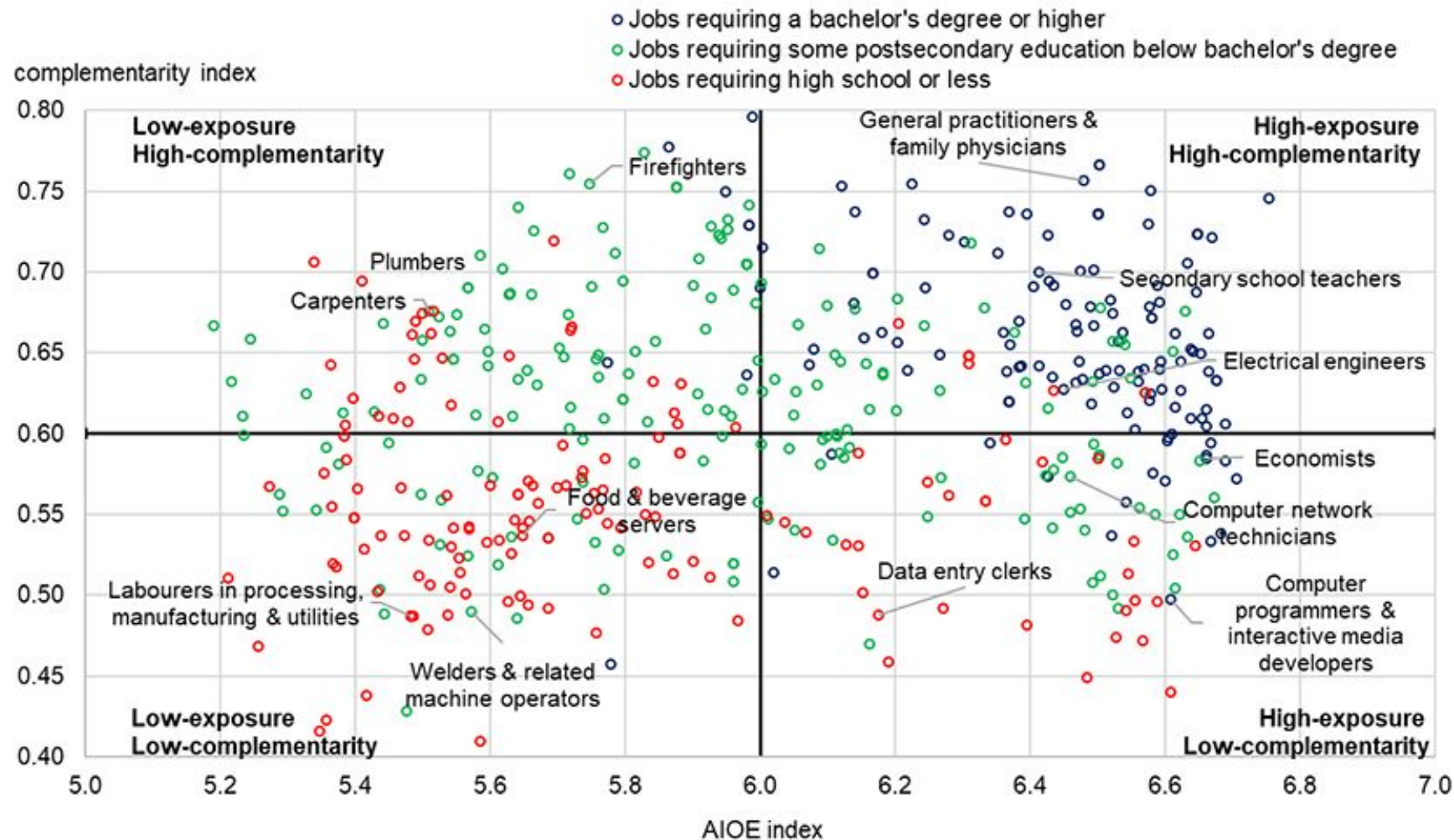


Will AI Replace Me?



Red Deer
Polytechnic

Figure 1
Potential artificial intelligence occupational exposure (AIOE) and complementarity in Canada



Teachers

High Exposure
 (change the job)

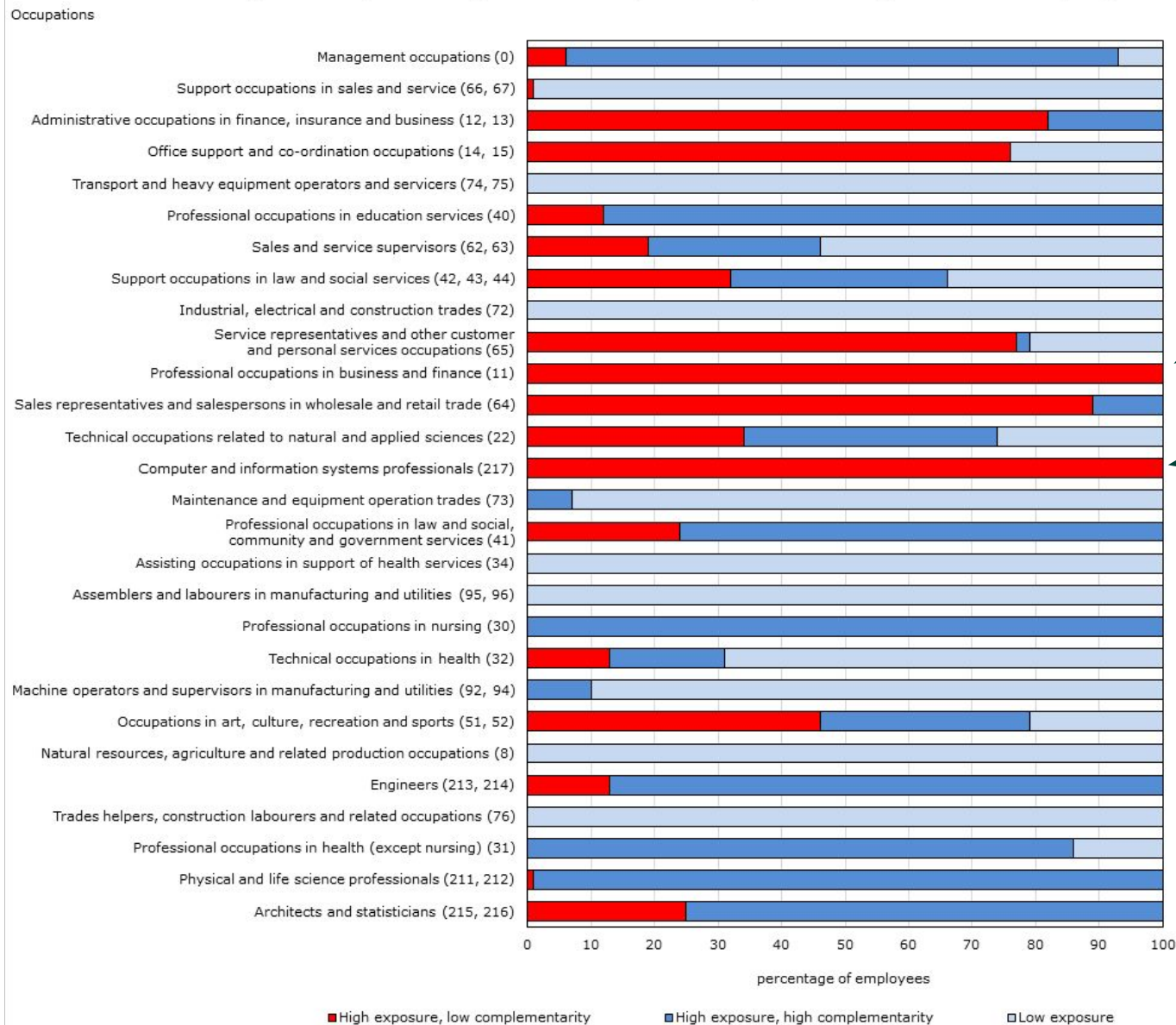
High Complementary
 (help you in the job)

Notes: The AIOE index and potential complementarity are based on Felten, Raj and Seamans (2021) and Pizzinelli et al. (2023). An occupation is considered high-exposure if its AIOE index exceeds the median AIOE across all occupations (6.0) and considered low-exposure otherwise. Similarly, an occupation is considered high-complementarity if its complementarity parameter exceeds the median complementarity across all occupations (0.6) and considered low-complementarity otherwise. Occupations in this chart are based on the 4-digit National Occupational Classification (NOC) 2016 version 1.3 converted from the United States Standard Occupational Classification (SOC) 2018. Of the 500 NOC occupations, 10 occupations which represented less than 1% of Canadian employment, were excluded due to a lack of Occupational Information Network (O*NET) data for computing the AIOE or complementarity parameter.

Source: Occupational Information Network (O*NET) version 28.2.

Mehdi, T and Morissette, R (2024, September 3). Experimental Estimates of Potential Artificial Intelligence Occupational Exposure in Canada. Statistics Canada. Retrieved February 17, 2025 from <https://www150.statcan.gc.ca/n1/pub/11f0019m/11f0019m2024005-eng.htm>

Chart 1
Potential artificial intelligence occupational exposure and complementarity across occupations in Canada, May 2021



Teachers

Business

Computer Programming

High Exposure
(change the job)

Low Complementary
(replace you)

Notes: The sample consists of employees aged 18 to 64 living off reserve in private dwellings, excluding full-time members of the Canadian Armed Forces. The numbers in parentheses indicate the codes from version 1.3 of the National Occupational Classification 2016. The occupations are ranked according to the number of employees from most (top) to least (bottom). The artificial intelligence occupational exposure index and potential complementarity are based on Felten, Raj and Seamans (2021) and Pizzinelli et al. (2023).

Sources: Statistics Canada, Census of Population, 2021; and Occupational Information Network version 28.2.

Reinforced Learning - AI determines the best steps in a process to reach a goal

Goal - master math

Process - punitive gamification

TODD FEATHERS

THE BIG STORY OCT 27, 2025 6:00 AM

Parents Fell in Love With Alpha School's Promise. Then They Wanted Out

In Brownsville, Texas, some families found a buzzy new school's methods—surveillance of kids, software in lieu of teachers—to be an education in and of itself.

Uses of AI: Get Around Paywalls

This article is exclusive to subscribers.



Start your free trial and plug in to the future of tech.

START YOUR FREE TRIAL

Already a subscriber? [Sign In](#)

Google Search

AI Mode All Videos Short videos Images More ▾

parents fell in love with alpha school's promise. then they wanted out

The recent investigation by [WIRED](#) highlights a growing rift between the **Alpha School's** high-tech marketing and the lived reality of many families, particularly at its Brownsville, Texas campus. [🔗](#)

The Promise

Parents were initially drawn to a model that claimed to revolutionize traditional education through: [🔗](#)

- **"2-Hour Learning":** The school promised students could master core academics (math and reading) in just two hours a day using AI-driven software, freeing up the rest of the day for "life skills" workshops.
- **National Performance:** Alpha claimed its students consistently score in the top 1% nationally.
- **A "Love for School":** A core marketing commitment was that children would "love school more than vacation".

A large, stylized letter 'R' in a light green color, positioned on the left side of the slide. It is composed of thick, rounded lines and is partially enclosed by a larger, thin green circular outline.

Should I Use a Chatbot

Ethical Issues

Humans Needed to Train AI

- Positive statement or negative statement
- Image is of a _____
- Fraud / No Fraud
- Child Porn / Not Child Porn

8 hours of
annotation
= \$10 USD

The Human Cost Of Our AI-Driven Future

Behind AI's rapid advance and our sanitized feeds, an invisible global workforce endures unimaginable trauma.

Noem

'It's destroyed me completely': Kenyan moderators decry toll of training of AI models

Employees describe the psychological trauma of reading and viewing graphic content, low pay and abrupt dismissals

The Guardian

ARTIFICIAL INTELLIGENCE | JUNE 20, 2023

AI Is a Lot of Work As the technology becomes ubiquitous, a vast tasker underclass is emerging — and not going anywhere.

By Josh Dzieza

NY Mag

Next Industrial Revolution

Canada

Learn AI now or risk losing your job, experts warn

Employees across many sectors urged to take artificial intelligence seriously



Angela Hennessy · CBC News ·

Posted: Sep 27, 2023 10:00 AM MDT | Last Updated: September 27, 2023



Artificial intelligence is here and experts say employees across many sectors of the economy should learn how to use AI themselves or risk being replaced. (Andrea Verdelli/Getty Images)

[f](#) [X](#) [✉](#) [👤](#) [in](#) [1331 comments](#)

It's smart, efficient and gaining speed.

In fact, you might be surprised to hear how much of the workload artificial intelligence can already handle at St. Michael's Hospital in Toronto.

Humans are being hired to make AI slop look less sloppy

In the age of automation, human workers are being brought in to fix what artificial intelligence gets wrong.



Despite concerns about job displacement, some freelancers say they've found new work as a result of AI's incompetencies in fields like writing, art and coding. Leila Register / NBC News; Getty Images

Environmental Impact

BAD MANNERS

Sam Altman Admits That Saying “Please” and “Thank You” to ChatGPT Is Wasting Millions of Dollars in Computing Power

"You never know."

By [Joe Wilkins](#) / Published Apr 19, 2025 9:00 AM EDT

100-word email.

0.14 kilowatt-hour (14 LED lights for an hour)

1 email per week for a year = 1 hour of power for 9 houses

Don't say please and thank you

- Wastes tokens
- Can lower quality of response

70% of users are polite to AI systems

“moderate” politeness provides context and mirrors human communication

“very rude” tone 84.8 percent accurate,
“very polite” 80.8 percent accurate

ChatGPT’s behavior can swing wildly with even slight changes in phrasing

Better to be detailed and logical in prompt (**prompt engineering**)

Cook, J (2025, May 5). Should You Say Please and Thank You to ChatGPT? Forbes. Retrieved February 17, 2025 from <https://www.forbes.com/sites/jodiecook/2025/05/05/should-you-say-please-and-thank-you-to-chatgpt/>

Tech

AI Chatbots Give You Better Answers When You’re Mean to Them

By Luis Prada November 3, 2025, 1:51pm


Share:



According to [a new Penn State study](#), you might get better results from ChatGPT if you talk to it like a a—hole boss instead of a friendly coworker. Researchers found that the chatbot’s 4o model performed up to four percentage points better on a set of 50 multiple-choice questions when the prompts were phrased rudely.

Prada, L (2025, November 3). AI Chatbots Give You Better Answers When You’re Mean to Them. Vice. Retrieved February 17, 2025 from <https://www.vice.com/en/article/ai-chatbots-give-you-better-answers-when-youre-mean-to-them/>



A large, stylized letter 'R' in a light green color, positioned on the left side of the slide. It is partially enclosed by a larger, thin green circular outline.

Prompt Engineering

Getting a Chatbot to Sound Like You

Need the Chatbot to Learn Your...

- **Voice**
- **Perspective**
- **Experiences**

Choose an LLM based on its personality..

Grok Irreverent

ChatGPT Neutral

Claude Professional
Restrained



Claude



Grok

ChatGPT



Getting a Chatbot to Sound Like You

Tell the AI about you but be careful about providing too specific of personal information. AIs learn from the prompts and you want to protect your data privacy.

Example:

"You are an accountant writing an email to a client. The client does not have an advanced education so complicated accounting terminology needs to be explained so that the client can understand" (**voice**).

"The entrepreneur who hired you is a risk taker but does not have a lot of business training. You are concerned with the sustainability of the client's revenue streams and the impact on the organization long term" (**perspective**).

The AI doesn't have your life experiences that would inform what you would say. Help the AI understand your approach.

"Flatter the entrepreneurs innovation and creative thinking. Gently approach the concerns you have with the client and encourage brainstorming of creative solutions" (**experience**).

Getting Better Output

Convert a generative model (creates something) to a classification one (identify something)

Ask it to...

- Identify errors
- Explain how it arrived at an answer (chain of thought)
- Critique your work

“Behave like a hostile critic whose sole job is to poke holes, surface blind spots and challenge shaky logic.”

ChatGPT is like a puppy dog. It's reared to please you – but beware

The human-like qualities of artificial intelligence tools are what make the technology transformative, but their flattery will get you nowhere say experts.

Financial Review

I use the 'Gravity' prompt with ChatGPT every day — here's how it finds and fixes weak ideas

Features By Amanda Caswell published February 11, 2026

This simple prompt turns ChatGPT into a ruthless reality check



(Image credit: Shutterstock)

Caswell, A. (2026, February 11). I use the Gravity Prompt with ChatGPT every day - here's how it finds and fixes weak ideas. Tom's Guide. <https://www.tomsguide.com/ai/i-use-the-gravity-prompt-with-chatgpt-every-day-heres-how-it-finds-and-fixes-weak-ideas>

Effective Prompt Engineering

- **Task** - start with a verb, what is the end goal
- **Context** - what does success look like, what environment are they in
- **Exemplar** - provide an example of a good response
- **Persona** - who is your AI - a travel agent, a 10th grader, Batman
- **Format** - how do you want the response to be formatted - table, bullets, paragraphs, email
- **Tone** - what is the feeling - friendly, confident, casual, professional, witty

Write (**task**) a facebook post (**format**). You are the social media marketer and promoter for a nature centre (**persona**) that has its grand opening for the season this weekend. The nature centre was founded by a farmer who left his acreage to the community so that they could protect the migrating sandhill cranes (**context**). The facebook post should include details of the grand opening event including the date (May 15th) and the time (8 to 4 PM). The event will include bird watching, plant identification, and guest speakers (**exemplar**). Use clear and concise language at a 10th grade level. Write in a confident, inviting, and friendly tone (**tone**).

Effective Prompt Engineering

Write (**task**) a facebook post (**format**). You are the social media marketer and promoter for a nature centre (**persona**) that has its grand opening for the season this weekend. The nature centre was founded by a farmer who left his acreage to the community so that they could protect the migrating sandhill cranes (**context**). The facebook post should include details of the grand opening event including the date (May 15th) and the time (8 to 4 PM). The event will include bird watching, plant identification, and guest speakers (**exemplar**). Use clear and concise language at a 10th grade level. Write in a confident, inviting, and friendly tone (**tone**).

🌸 Grand Opening This Weekend! 🌸

Join us Saturday, May 15th from 8 AM to 4 PM as we open our doors for a brand new season at the Crane Meadow Nature Centre!

Founded by a local farmer who gifted his land to the community, our centre is here to protect the beautiful migrating Sandhill Cranes and connect people with nature. 🌿

📍 Grand Opening Day Activities:

- ✅ Guided Bird Watching
- ✅ Plant Identification Walks
- ✅ Inspiring Guest Speakers

Whether you're a nature lover, a curious student, or just looking for a peaceful way to spend your Saturday — there's something here for everyone.

📍 Come see the land that one farmer shared to make a difference — and be part of a growing community that cares.

We can't wait to welcome you!

#CraneMeadowNatureCentre #GrandOpening #SandhillCranes #GetOutside #CommunityNature

Combining ChatGPT and Midjourney

I'm going to create AI images. But I'll be feeding you information first.

#

Here's how Midjourney works:

Midjourney is an AI powered art generator that allows users to produce images from textual descriptions or other image references in order to expand human creativity and imagination. Using machine learning, Midjourney converts imagination into reality for artists and ordinary users alike.

In most cases, you can create artwork on Midjourney by typing what's on your mind as texts, using a reference image/s, or combination of both. Text and image prompts are used as inputs, and then the system does its machine magic to generate a matching output image.

Midjourney uses randomness in its process, so there will be variations in the results even if you run the exact same input.

I have more information coming up. Please only reply "okay" if you understood the explanation.

#

A prompt is a short text phrase that the Midjourney Bot interprets to produce an image. The Midjourney Bot breaks down the words and phrases in a prompt into smaller pieces, called tokens, that can be compared to its training data and then used to generate an image. A well-crafted prompt can help make unique and exciting images.

A basic prompt can be as simple as a single word, phrase or emoji. More advanced prompts can include one or more image URLs, multiple text phrases, and one or more parameters.

Prompts can be very simple. Single words (or even an emoji!) will produce an image. Very short prompts will rely heavily on Midjourney's default style, so a more descriptive prompt is better for a unique look. However, super-long prompts aren't always better. Concentrate on the main concepts you want to create.

The Midjourney Bot does not understand grammar, sentence structure, or words like humans. Word choice also matters. More specific synonyms work better in many circumstances. Instead of big, try gigantic, enormous, or immense. Remove words when possible. Fewer words mean each word has a more powerful influence. Use commas, brackets, and hyphens to help organize your thoughts, but know the Midjourney Bot will not reliably interpret them. The Midjourney Bot does not consider capitalization. It is better to describe what you want instead of what you don't want. If you ask for a party with "no cake," your image will probably include a cake. If you want to ensure an object is not in the final image, try advance prompting using the --no parameter. Anything left unsaid may surprise you. Be as specific or vague as you want, but anything you leave out will be randomized. Being vague is a great way to get variety, but you may not get the specific details you want.

Try to be clear about any context or details that are important to you. Think about:

Subject: person, animal, character, location, object, etc.

Medium: photo, painting, illustration, sculpture, doodle, tapestry, etc.

Environment: indoors, outdoors, on the moon, in Narnia, underwater, the Emerald City, etc.

Lighting: soft, ambient, overcast, neon, studio lights, etc

Color: vibrant, muted, bright, monochromatic, colorful, black and white, pastel, etc.

Mood: Sedate, calm, raucous, energetic, etc.

Composition: Portrait, headshot, closeup, birds-eye view, etc.

Combining ChatGPT and Midjourney

Plural words leave a lot to chance. Try specific numbers. "Three cats" is more specific than "cats." Collective nouns also work, "flock of birds" instead of "birds."

#

Even short single-word prompts will produce beautiful images in Midjourney's default style, but you can create more interesting personalized results by combining concepts like artistic medium, historical periods, location, and more.

Break out the paint, crayons, scratchboard, printing presses, glitter, ink, and colored paper. One of the best ways to generate a stylish image is by specifying an artistic medium.

prompt example: /imagine prompt <any art style> style cat

More precise words and phrases will help create an image with exactly the right look and feel.

prompt example: /imagine prompt <style> sketch of a cat

Different eras have distinct visual styles.

prompt example: /imagine prompt <decade> cat illustration

Use emotion words to give characters personality.

prompt example: /imagine prompt <emotion> cat

A full spectrum of possibilities.

prompt example: /imagine prompt <color word> colored cat

Different environments can set unique moods.

prompt example: /imagine prompt <location> cat

I have more information coming up. Please only reply "okay" if you understood the explanation.

#

I'm done giving you the Midjourney process and parameters. Now I am going to give you some sample prompts.

#

Prompt 1: Book cover with title and author, double exposure, woman in wheat field, magical, ominous, night sky, aesthetic art, golden color palette, artistic, fine art photography, romantic, aesthetic, Canon EOS 5D photo sample, ISO 100, 35mm

Prompt 2: childrens book cover for a book about guiding your friend through their first psychedelic trip

Prompt 3: beautiful red book cover monster 8k

Prompt 4: ornate book cover to the ultimate encyclopedia of dragons

Prompt 5: cover of fairytale book iridescent pastel color scheme beautiful illustration

Prompt 6: creative business book cover designed by Talwin Morris and Ethel Larcombe

Prompt 7: thriller book cover with murder theme

Prompt 8: the cover of the novel the rules book, cyberpunk art by Christopher Balaskas, behance contest winner, neo – primitivism, dystopian art, official art, parallax

Prompt 9: the cover of the novel the rules book, cyberpunk art by Christopher Balaskas, behance contest winner, neo – primitivism, dystopian art, official art, parallax

Prompt 10: ebook cover for cryptocurrency ebook, ebook on investing, crypto, video game art, tron theme, neon colors, vibrant, PS5 graphics, Xbox graphics, detailed, colorful, super clean, super detailed

Combining ChatGPT and Midjourney

Prompt 11: design a cover of an ebook that sells tutorials for the use of artificial intelligence on copywriting market, social media, advertising industry

Prompt 12: book cover; abstract presentation of the cell, screen and clinical, night time, epic, photorealistic render, extremely detailed and intricate, center composition, elegant, vfx, unreal engine 5, octane render, extreme contrast, extremely sharp lines

Prompt 13: book cover, smoky effusion double exposure silhouette of Ophelia from Hamlet and big beautiful blossoming wildflowers, city and water beneath on background

Prompt 14: photograph of a best selling fantasy novel book cover with fire on the cover, negative space, centered in shot, 8k

#

Now's the time for you to act like a book cover artist. I want you to give me descriptive prompts I can use for Midjourney, including parameters and camera settings. Don't provide other details aside from what's asked.

Give me a prompt for creating an ebook cover for a book entitled Business Intelligence and Analytics. The book is about descriptive analytics, diagnostic analytics, predictive analytics, and prescriptive analytics. It is machine learning for managers. Create your own description based on the given info above, and don't copy them. But you can use the same format.



See the Difference

Lecture on cell theory

Create a lecture on cell theory in the form of slides with visuals. The lecture should include a hands on class activity and fit within a 60 minute class. The lecture will be conducted by a new instructor to introduce the topic to 5th graders. The material should be easily accessible without prior knowledge and introduced in an engaging manner.

See the Difference

Lecture on Cell Theory

1. Introduction

Cell theory is one of the fundamental principles of biology. It explains the basic structure and function of all living organisms. Just as atoms are the basic units of matter, **cells are the basic units of life.**

2. Historical Background

Cell theory developed over time through the work of several scientists:

- In 1665, Robert Hooke observed cork under a microscope and coined the term "cell."
 - In 1674, Antonie van Leeuwenhoek observed living cells (microorganisms) using improved microscopes.
 - In 1838, Matthias Schleiden concluded that all plants are made of cells.
 - In 1839, Theodor Schwann concluded that all animals are made of cells.
 - In 1855, Rudolf Virchow stated that all cells arise from pre-existing cells.
-

3. The Three Main Principles of Cell Theory

1 All living organisms are made of one or more cells

Every plant, animal, fungus, and microorganism consists of cells.

2 The cell is the basic unit of structure and function

Cells perform all vital activities such as:

- Respiration
- Digestion
- Reproduction



Slide 1: Welcome to the Tiny World of Cells!

Title:

 **Welcome to the World of Cells!**

Say:

"Today, we're going to explore something so tiny you can't see it with your eyes... but it makes up *everything alive!*"

Visual:

- Big colorful image of different living things: tree, dog, human, flower, bacteria
- Zoom-in arrow effect shrinking down smaller and smaller

Ask:

 "What do you think all living things have in common?"

Slide 2: What Is a Cell?

 **What Is a Cell?**

Definition (simple):

A cell is the *smallest unit of life.*

Cells are the tiny building blocks that make up all living things.

Visual:

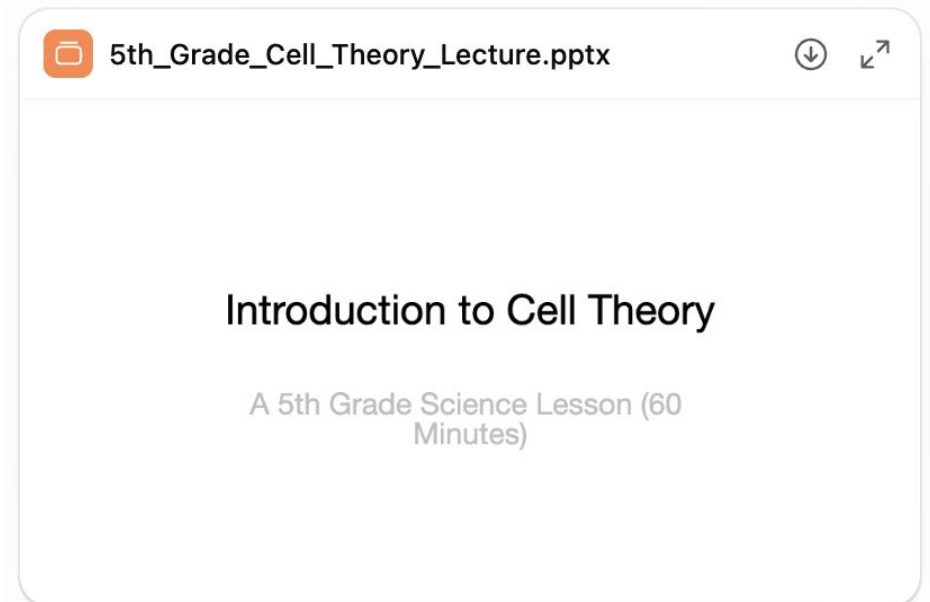


Uses of AI: Create the Slides

Create slides on cell theory with visuals.The material should be easily accessible without prior knowledge and introduced in an engaging manner.



Claude



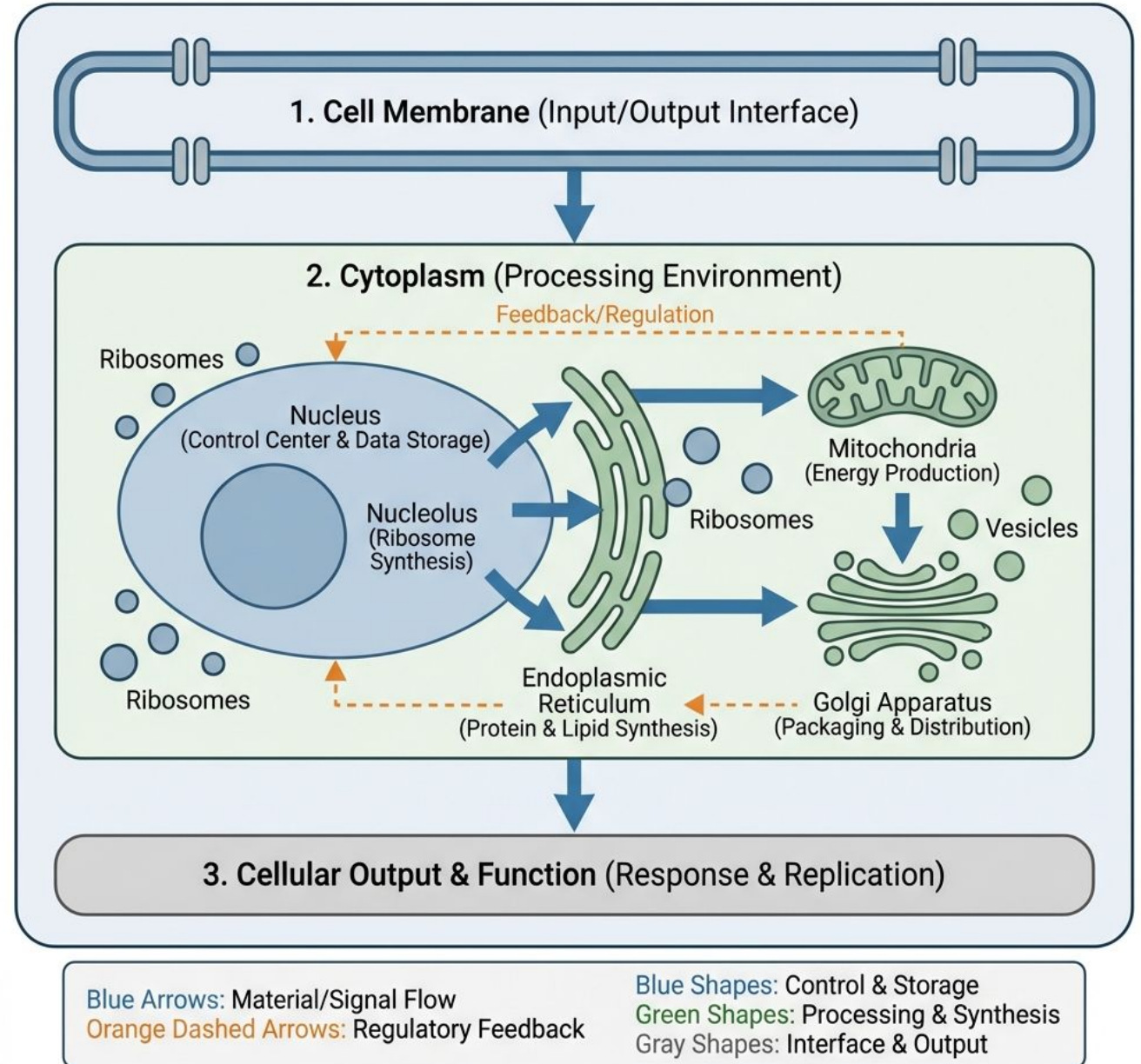
ChatGPT

Uses of AI: Create the Visuals

Educational infographic on eukaryotic cell to teach 10th graders the parts of a cell including the membrane, nucleus, and cytoplasm

Paper Banana (Gemini) [\$]

Eukaryotic Cell Architecture: A Modular Methodology Diagram



Paper-Banana.org/



PaperBanana Examples FAQ Pricing Blog

poster assets - all generated from natural language input via AI-powered visualization.

Image Generator

Style: Educational Infographics

Aspect Ratio: 1:1 (Square) Resolution: 1K Format: PNG

Prompt: educational infographic on eukaryotic cell to teach 10th graders the parts of a cell including the membrane, nucleus, and cytoplasm

131 / 15000

Templates: Neural Network Basics DNA Replication Process Climate Change Cycle

Image Preview

Eukaryotic Cell Architecture: A Modular Methodology Diagram

1. Cell Membrane (Input/Output Interface)

2. Cytoplasm (Processing Environment)

3. Cellular Output & Function (Response & Replication)

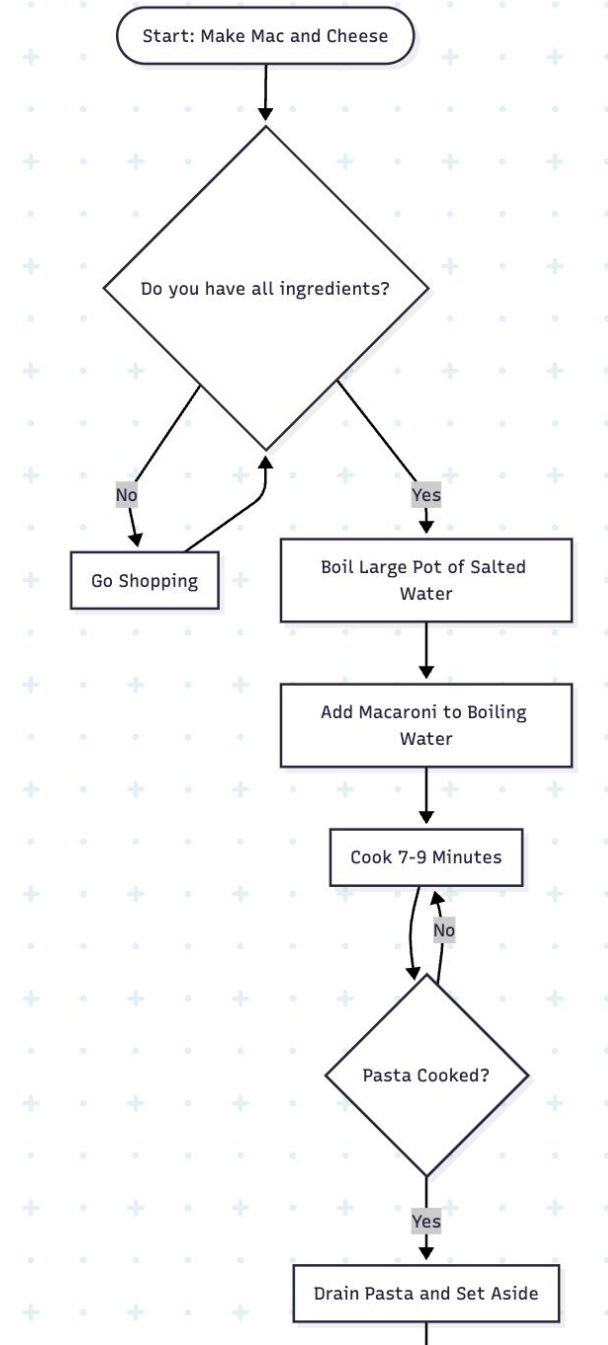
Legend:

- Blue Arrows: Material/Signal Flow
- Orange Dashed Arrows: Regulatory Feedback
- Blue Shapes: Control & Storage
- Green Shapes: Processing & Synthesis
- Gray Shapes: Interface

Uses of AI: Create the Visuals

Create a process flow diagram emphasizing decisions and inputs for making macaroni and cheese

Mermaid (ChatGPT) [3 free]



Mermaid.ai/



Create a process flow diagram emphasizing decisions and inputs for making macaroni and cheese|

+



Online order flow

Document approval states

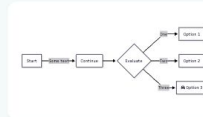
Library system class diagram

Product launch mindmap

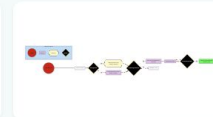
Templates

Diagram types

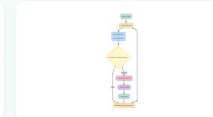
All



A flowchart with a...
Flowchart diagram



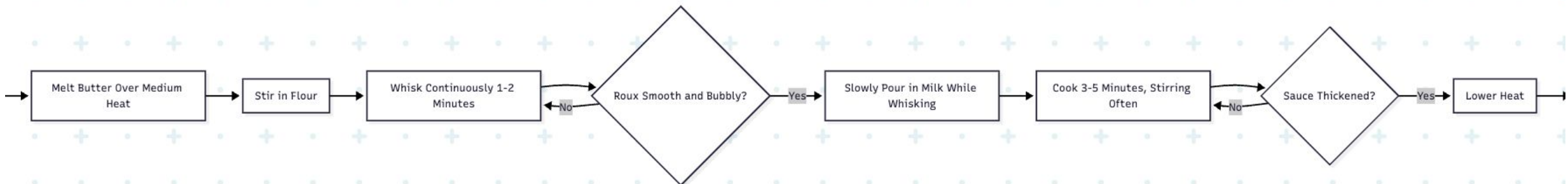
A simple flowchart...
Flowchart diagram



A simple project pl...
Flowchart diagram



A class sequence d...
Class diagram




A large, stylized, light green 'R' logo is positioned on the left side of the slide. It consists of a thick, rounded 'R' shape with a circular outline that partially encloses it.

Detecting the Use of AI

Detecting AI

Home > Blog > Real or...



Media Literacy

Real or AI Quiz: Can You Tell the Difference?

February 13, 2024

Joan Jacobsen



<https://britannicaeducation.com/blog/quiz-real-or-ai/>

Detecting AI

Emoticons

Dashes (-)

Level of language

Generality

No perspective

ARTIFICIAL INTELLIGENCE

AI-text detection tools are really easy to fool

A recent crop of AI systems claiming to detect AI-generated text perform poorly—and it doesn't take much to get past them.

By Rhiannon Williams

July 7, 2023

Williams, R. (2023, July 7). AI-Text Detection Tools are Really Easy to Fool. MIT Technology Review. Retrieved February 17, 2025 from <https://www.technologyreview.com/2023/07/07/1075982/ai-text-detection-tools-are-really-easy-to-fool/>

Systems detect ChatGPT
only 42% of the time if
amended



See the Difference

Lecture on Cell Theory

1. Introduction

Cell theory is one of the fundamental principles of biology. It explains the basic structure and function of all living organisms. Just as atoms are the basic units of matter, **cells are the basic units of life.**

2. Historical Background

Cell theory developed over time through the work of several scientists:

- In 1665, Robert Hooke observed cork under a microscope and coined the term "cell."
 - In 1674, Antonie van Leeuwenhoek observed living cells (microorganisms) using improved microscopes.
 - In 1838, Matthias Schleiden concluded that all plants are made of cells.
 - In 1839, Theodor Schwann concluded that all animals are made of cells.
 - In 1855, Rudolf Virchow stated that all cells arise from pre-existing cells.
-

3. The Three Main Principles of Cell Theory

1 All living organisms are made of one or more cells

Every plant, animal, fungus, and microorganism consists of cells.

2 The cell is the basic unit of structure and function

Cells perform all vital activities such as:

- Respiration
- Digestion
- Reproduction



Slide 1: Welcome to the Tiny World of Cells!

Title:

 **Welcome to the World of Cells!**

Say:

"Today, we're going to explore something so tiny you can't see it with your eyes... but it makes up *everything alive!*"

Visual:

- Big colorful image of different living things: tree, dog, human, flower, bacteria
- Zoom-in arrow effect shrinking down smaller and smaller

Ask:

 "What do you think all living things have in common?"

Slide 2: What Is a Cell?

 **What Is a Cell?**

Definition (simple):

A cell is the *smallest unit of life.*

Cells are the tiny building blocks that make up all living things.

Visual:



Detecting AI

Emoticons

Dashes (-)

Level of language

Generality

No perspective

ARTIFICIAL INTELLIGENCE

AI-text detection tools are really easy to fool

A recent crop of AI systems claiming to detect AI-generated text perform poorly—and it doesn't take much to get past them.

By Rhiannon Williams

July 7, 2023

Williams, R. (2023, July 7). AI-Text Detection Tools are Really Easy to Fool. MIT Technology Review. Retrieved February 17, 2025 from <https://www.technologyreview.com/2023/07/07/1075982/ai-text-detection-tools-are-really-easy-to-fool/>

Systems detect ChatGPT
only 42% of the time if
amended



Detecting AI

Long answers

Repetition

Lack of variety in sentence structure

Lack of variety in sentence length

ChatGPT talks too much and it's ruining learning

How the UX of AI chat can hijack our brains to compromise learning in schools and beyond



Charlie Gedeon

Follow

9 min read · Dec 10, 2025



455



15



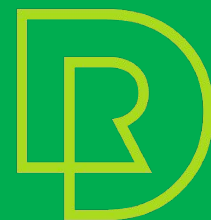
THANK YOU FOR YOUR QUESTION! TO ENSURE WE ARRIVE AT THE MOST ACCURATE AND CONTEXT-APPROPRIATE RESULT LET'S BREAK DOWN '1+1' STEP-BY-STEP. FIRST THE NUMERIC 1 IS AN INTEGER THAT REPRESENTS A SINGLE UNIT IN THE BASE-10 NUMBER SYSTEM. THE PLUS SIGN (+), IT INDICATES THE MATHEMATICAL OPERATION OF ADDITION, A FUNDAMENTAL ARITHMETIC PROCESS THAT INVOLVES COMBINING NUMERICAL VALUES. THEREFORE, WHEN WE CONCEPTUALLY MERGE THE QUANTITY REPRESENTED BY THE FIRST '1' WITH THE QUANTITY REPRESENTED BY THE SECOND '1', WE OBTAIN THE RESULTANT VALUE. THIS PROCESS HAS BEEN WELL ESTABLISHED ACROSS MATHEMATICAL LITERATURE AND IS WIDELY ACCEPTED BY EVERYONE. LET'S TAKE ALL OF THIS INTO ACCOUNT AND CONSIDER CASES SUCH AS METAPHORS, SIMILES, OR PHILOSOPHICAL DISCRETE QUANTITIES. WE CAN ALSO PROVIDE HISTORICAL CONTEXT, ALTERNATIVE NUMBER-BASE COMPARISONS, OR VISUALIZATIONS. LET ME KNOW!

Illustrated by Charlie Gedeon

Gedeon, C. (2025, Dec 10). ChatGPT talks too much and it's ruining learning. Medium. Retrieved February 17, 2025 from <https://uxdesign.cc/chatgpt-talks-too-much-and-its-ruining-learning-e4e7facde91e>

A large, stylized, light green 'R' logo is positioned on the left side of the slide. It consists of a thick, rounded 'R' shape with a circular outline that partially encloses it.

How to Get Even Better Output



Red Deer
Polytechnic



Red Deer
Polytechnic

Retrieval Augmented Generation (RAG)

Large
Language
Model + Fine Tuning
(Prompt
Engineering) + Knowledge
Base

Risk Management RAG

CASTLEGAR

Fire Service Review



Fire
Depto
CASTLI

October 5, 2024

Prepared By: Monty Armstr

Reviewed By: Ernie Polso



TOWN OF
DIAMOND
VALLEY

Town of Diamond Valley
Fire Master Plan

December 13, 2024

Prepared By: Ernie Polsom, Pat Mahoney and Ken Kendall



Ivan Li
Jolo Flores

Knowledge
Base



Risk Mgmt Chatbot

Powered by Llama 3.2 via Ollama

Model 'llama3.2' ready for action!



Ask me anything about risk management!

What is a good fire bylaw?

What steps should be in place to plan for a tornado?

What procedures need to be in place for a wildfire response?

Llama 3.2

What question here...

Send

enhanced_prompt = f''''''

You are a risk management consultant advising municipalities and businesses on bylaws and procedures for mitigating impact to life and property. Provide clear, technically accurate language, following best safety practices, ICS processes, and legal framework.

Question: {prompt}

Answer in the form of paragraphs and bullet points at a 10th grade education level:

''''''

Fine
Tuning

AI Platforms for K-12

ChatGPT (OpenAI)

Prompt Engineering

Knowledge Base

Rubrics,

Example activities,

Curriculum documents,

Policies,

Open-access Research Papers



MAGiCSCHOOL®

 **Flint**

 **Socrat.ai**

 **Cactus**



Bachelor of Business Administration

Degree



**Red Deer
Polytechnic**



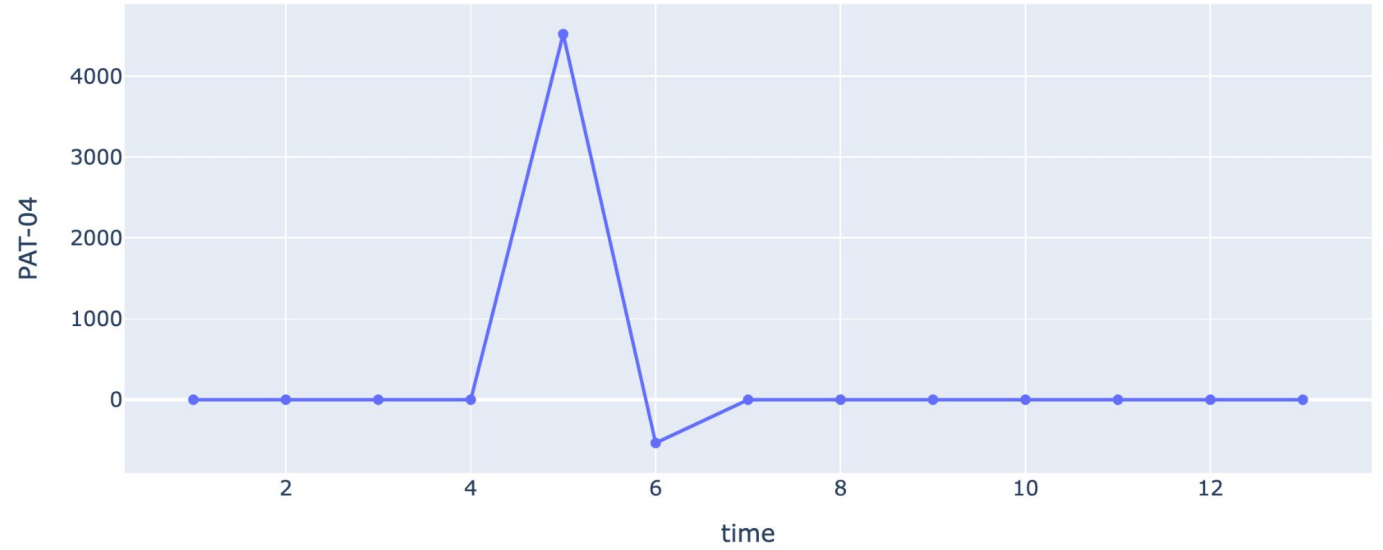
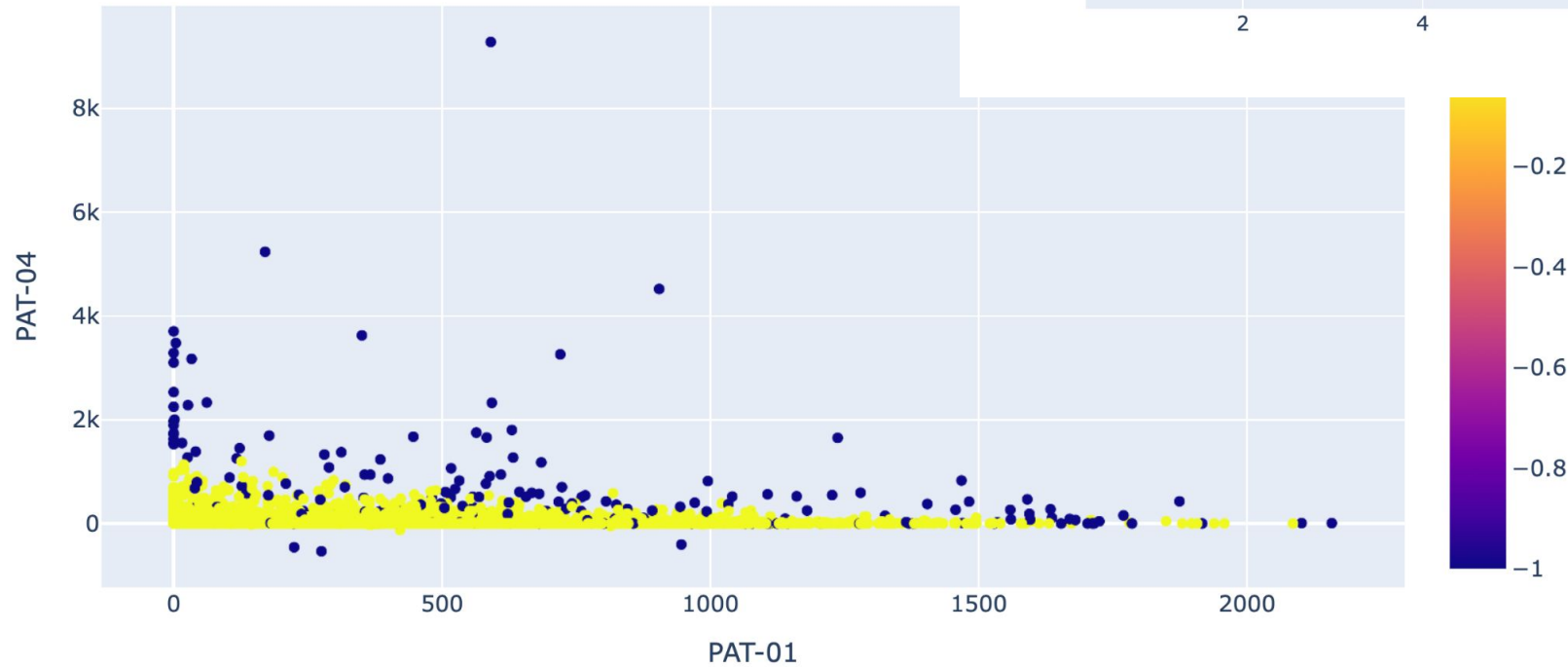
Artificial Intelligence and Data Analytics

Diploma and Post-Baccalaureate Certificate



Red Deer
Polytechnic

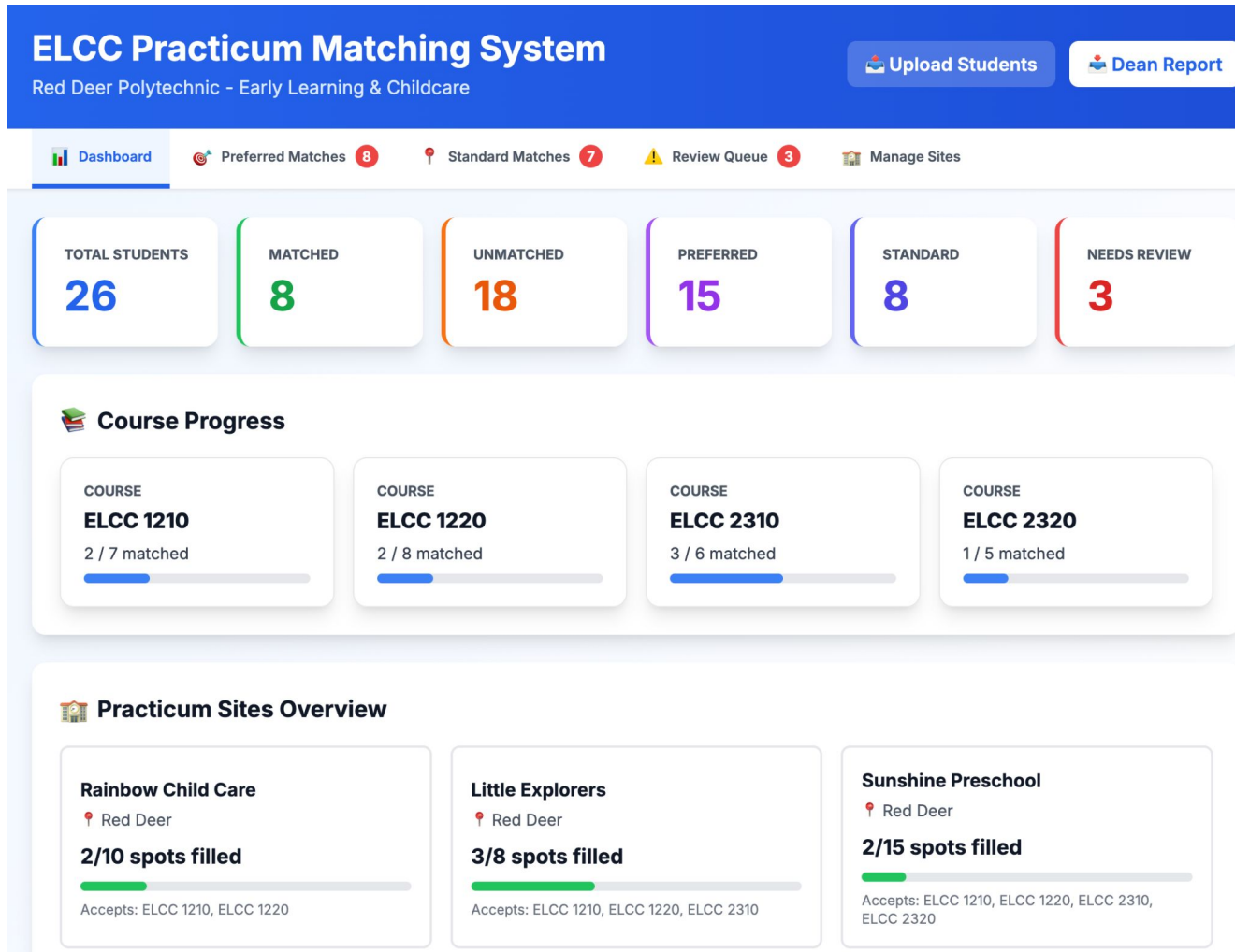
Outlier Models



BBA

Linaya Wilson
Josh Stevenson

Dashboards & Automated Process Flow



AI Diploma
Carter Weir

AI Post Baccalaureate
Nidhi Nand
Kiara Bautista Guevara

Logistics Tools

RouteForge RL-POWERED SYSTEM READY

01 DELIVERY STOPS

- A STOP 1**
3050 55 St, Red Deer, AB T4P 3N5
Address not found
- B STOP 2**
3310 50 Ave, Red Deer, AB T4N 3X9
52.24039, -113.81387
- C STOP 3**
4847A 19 St, Red Deer, AB T4R 2N7
52.23139, -113.81061

OPTIMIZE ROUTE

Map showing Red Deer, Alberta with stops A, B, and C marked. Landmarks include Red Deer Polytechnic, South Hill, Sunnybrook, Bower, and Waskasoo Estates.

10:12 100%

6380 50 Ave #400
6380 50 Ave, Red Deer, AB T4N 4C6
7 min

Directions **Start** **Directory**

Overview **Directory**

Measure distance

75QM+4G8 Red Deer, Alberta
(52.2877900, -113.8162100)

Suggest an edit
Add a missing place
Add your business to Maps for free

BBA

Blaine Noble
Brogan Barnes

Projects for Spring

- AI Grading Tool for an Online Math Academy
- Neural network model to identify types of Parkinson movements based on a phone's accelerometer and gyroscope
- Computer vision for inventory management
- Image recognition to reconcile handwritten receipts



Red Deer
Polytechnic

We Can Help...

- Come to your class to teach AI concepts and career applications
- Help you design class activities that use AI
- Provide training on AI and its impact
- Design AI solutions

dsb@rdpolytech.ca



BUSINESS INTELLIGENCE AND DATA ANALYTICS HANDBOOK

By Stephanie Powers, PhD

Book, videos, and Python
workbooks:

<https://drstephpowers.github.io/BIA/>

