

IBM i Licensing 101

June 2026

Yan Zhuo, IBM i Product Manager

Agenda

1. IBM i licensing basics
2. IBM i simplification
3. IBM i subscription transformation
 - IBM i subscription bundles for P30/P20 tiers
4. Additional topics

IBM i Licensing Basics

Key Takeaway – IBM i License Topics

Check IBM i License Topics first for IBM i offering and licensing questions:

<https://www.ibm.com/support/pages/ibm-i-license-topics>

IBM i Subscription Transformation

IBM is transforming the IBM i business to subscription term licensing. Subscription term licensing is available for IBM i across the software tiers. In addition, the Licensed Program Pr IBM i are available with subscription term licensing.

[IBM i: P30 and P20 Bundles and Subscription Update](#) - Updated December 2025

[IBM Technology Expert Labs Advisory Connect](#) - Updated December 2025

[IBM Technology Expert Labs Toolkits: PowerHA Toolkits for IBM i and iDoctor](#) - Updated December 2025

[IBM i Subscription Transformation FAQ](#) - Updated March 26, 2026

[Backup, Recovery and Media Services \(BRMS\) Subscription Term \(5770-BR2\) Details and FAQ](#) - Updated March 26, 2026

IBM i Processor and User Transfer

[IBM i Processor and User Transfer Guide](#) (386 KB)

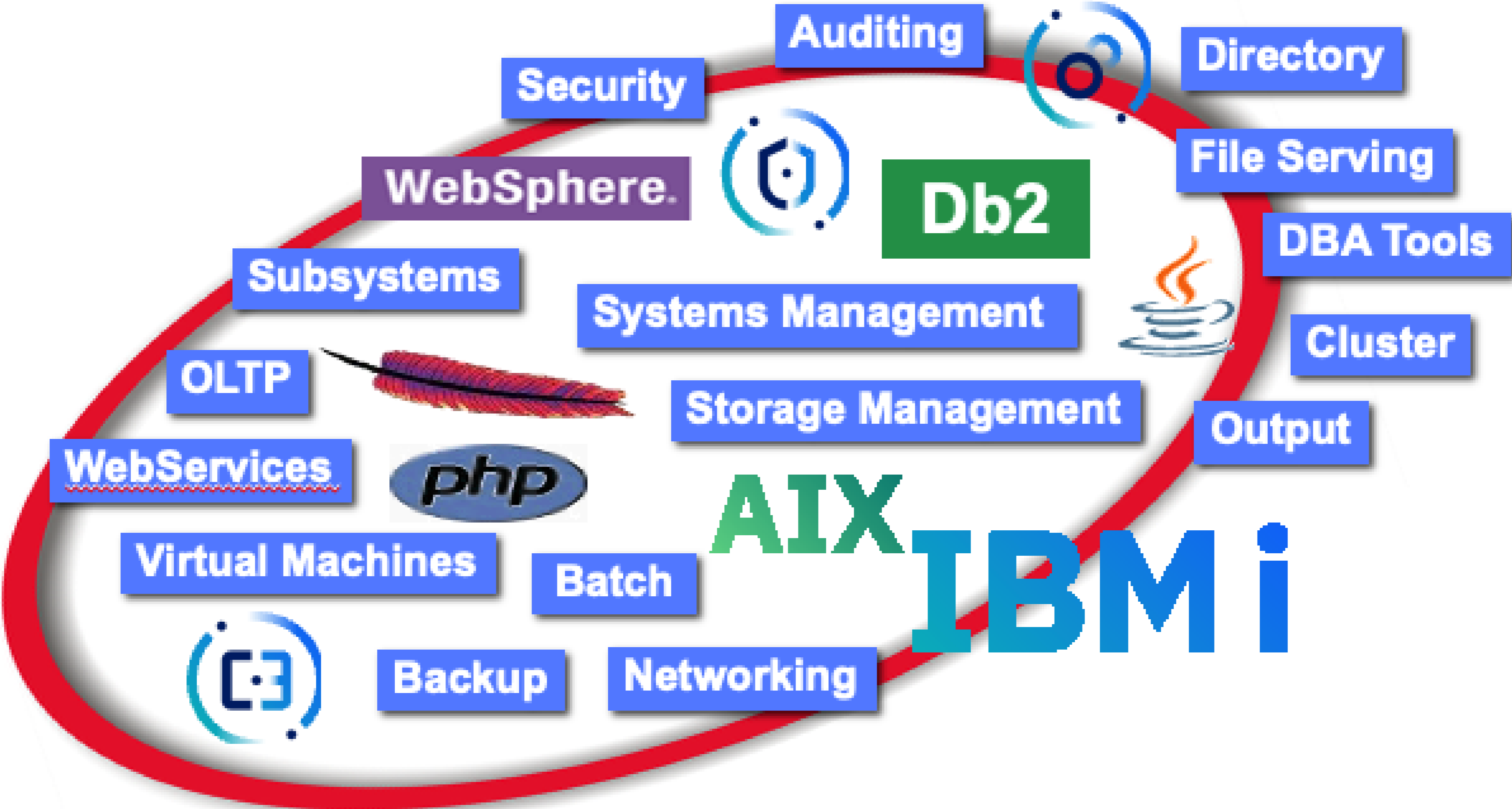
[IBM i Entitlement Transfer scenario where the donor machine has Technology Lifecycle Services \(TLS\) SWMA fulfilled in the Conga system](#) (105 KB)

IBM i Portfolio Simplification

October 10, 2023: IBM continues to simplify the IBM i portfolio.

[IBM i Portfolio Simplification](#) (263 KB) - Updated October 21, 2025

IBM i: The “i” is for “Integration”



IBM i System Support

Servers	IBM i 7.2	IBM i 7.3	IBM i 7.4	IBM i 7.5	IBM i 7.6
Power11 S1122/L1122 (VIOS only except the 2x4C is native or VIOS), S1124/L1124, E1180			✓	✓	✓
Power10 S1012 (no IBM i 7.3 support), S1014, S1022s (2x4C native or VIOS), S1022s/S1022/L1022 (VIOS only), S1024/L1024, E1080		✓	✓	✓	✓
Power9 S914, S922 (VIOS only), H922 (VIOS only), S924, H924, E980 S922 Entry (single native I/O partition only)	✓	✓	✓	✓	
Power8 S814, S822 (VIOS only), S824, E870, E870C, E880, E880C S812 (no IBM i 7.1, native I/O only)	✓	✓	✓		

[IBM i System Support Mapping](#)

IBM i 7.4 Lifecycle

IBM i 7.4	Date
Announce withdrawal from marketing and withdrawal from service	September 16, 2025
Effective withdrawal from marketing	April 30, 2026
Effective change in service level	September 30, 2026
Begin Service Extension	October 1, 2026

Current Software Licensing Models for IBM i

The licensing and available platforms will change as our offerings evolve.

Type of Licensing for IBM i	Description	Where is this type of IBM i license acquired
Non-expiring license Also called “perpetual” or “one-time charge” (OTC)	<ul style="list-style-type: none">Up-front payment of a license that does not expireAcquire/renew software maintenance (SWMA) to get upgrade, support, etc	<ul style="list-style-type: none">On-prem HWVirtual Serial Number (VSN)
Subscription Term license Sometimes we shorten to “Subscription”	<ul style="list-style-type: none">Up-front payment of a committed termFor IBM i, the Subscription terms are 1, 2, 3, 4, or 5 years.License and SWMA included in the term.	<ul style="list-style-type: none">On-prem HWVirtual Serial Number (VSN)
Power Enterprise Pools (PEP)	<ul style="list-style-type: none">Multisystem resource sharingPEP 2.0 Metered Capacity: Capacity used above Base CapacityPrepaid or Pay as you go (metered and billed)	<ul style="list-style-type: none">On-prem HWVirtual Serial Number (VSN)
Infrastructure as a Service (IaaS)	<ul style="list-style-type: none">Provide a delivery model in which resources and/or software are hosted (Public or Private Cloud)Subscription or Pay as you go (metered and billed)	<ul style="list-style-type: none">PowerVS

IBM i Portfolio

1. IBM i operating system, which includes a stack of Licensed Program Products (LPPs) and IBM i optional features at no extra charge
2. LPPs which are ordered separately, e.g.:
 - Backup, Recovery and Media Services (BRMS)
 - PowerHA SystemMirror for i
 - Db2 Mirror for i
 - Migrate While Active
 - Rational Development Studio for i
 - etc.
3. [New] IBM i Extensions for VS Code Enterprise Support
4. Products licensed under Passport Advantage, for example...
 - WebSphere MQ, Rational tools, etc.

The Basics

- IBM i licensing is ordered and **licensed on hardware model / machine size**
 - One IBM i license required **per core** (plus users on machines where applicable: P05, P10 tier)
 - IBM i requires software license keys
 - “License” is also referred to as an “entitlement”
 - Some LPPs have different charge metrics: e.g. Rational Development Studio and Rational Developer for i are **per user**
- Three machine size groups for Power hardware platforms – Small, Medium and Large
- For IBM i, there are also **processor groups (or “software tiers”) which map to machine sizes:**
 - Small processor groups P05/P10/P20
 - Medium processor group P30
 - Large processor group P50 (no longer used)
- **Charge metrics vary for tiers**
 - P05 and P10 tiers are prices per processor plus users (Unlimited User option available)
 - P20 and P30 tier are priced per processor

IBM i charge metrics

Machine Size	Model	Processor Group*	Structure	5250 Enterprise Enablement (5250 EE)**
Medium	E1180, E1080 S1124 48/60 Core S1024/L, S1024 32/48 Core E980, E880/E880C, E870/E870C	P30	Per core	Yes
Small	S1124 16/32 Core S1024/L, S1024 12/24 Core S924 S824	P20	Per core	Yes
	S1122 S1012 8 core S1022s/S1022/L1022/S922/H922/S822 (IBM i requires 4 cores per partition, under VIOS) S1022s 2x4-core has native i support (no restrictions) S1014 8 Core S914/S814 6/8 Core	P10	Per core and user (blocks of 10)	N/A
	S1012 1 and 4 Core S1014 4 Core S914/S814 4 Core S922 1 Core S812 1 Core	P05	Per core and user (blocks of 10 for subscription)	N/A

* [IBM i Software Tiers and Power Machines](#)

** [5250 Enterprise Enablement](#)

IBM i Simplification

IBM i Simplification

2023

- [October 2023 announcement](#): IBM i License Manager changes
 - Install PTF: no ordering, no license checking, software keys not required

Products/Options \$0: keys required prior to PTFs being installed

- InfoPrint Server (5722-IP1)
- Advanced DBCS Printer Support (5761-AP1)
- Communications Utilities (5761-CM1)
- Advanced Job Scheduler (5770-JS1)
- Performance Tools (5770-PT1)
- Query for i (5770-QU1)
- Db2 Query Mgr & SQL Dev Kit (5770-ST1)
- IBM i Access Family (5770-XW1)

- IBM i Optional Features: (5770-SS1)
- Media & Storage Extension – Opt 18
 - PSF 1-55 IPM Support – Opt 36
 - PSF 1-100 IPM Support – Opt 37
 - PSF AnySpeed – Opt 38
 - HA Switchable Resource Opt 41
 - HA Journal Performance – Opt 42

Products/Options \$0: not keyed

- Rational Application Management Toolset (5770-AMT)
- AFP Font Collection (5733-B45)
- AFP DBCS Fonts (5769-FN1)
- AFP Fonts (5769-FNT)

IBM i Optional Features:

- Db2 Symmetric Multiprocessing – Opt 26
- Db2 Multisystem – Opt 27

IBM i Simplification, continued

Removing license checking and keys

As of October 2023: PTFs remove the license checking function for keyed products on the previous page (left column).

5770-SS1 PTFs*

- 7.6: no PTFs needed; built into 7.6
- 7.5: SI84894
- 7.4: SI84893
- 7.3: SI84892
- 7.2: SI84891
- 7.1: SI84890

*Notes:

- These PTFs are likely superseded.
- [As always, active IBM i Software Maintenance \(SWMA\) is required in order to acquire PTFs.](#)

Software Downloads

IBM i clients who are registered on [Entitled Systems Support](#) can download the LPPs and optional features either under their existing 5770-SS1 entitlement, or under 5770-SS1 in the "IBM i evaluation and National Language Version (NLV) download" selection.

All Products and Options Entitled with IBM i

All products included with IBM i operating system entitlement at no additional charge

Bonus Programs: included with IBM i

- Administration Runtime Expert (also called Application Runtime Expert) (5733-ARE)
- CICS® Transaction Server (5770-DFH)
- HTTP Server (5770-DG1)
- Facsimile Support for i (5798-FAX)
- Developer Kit for Java (5770-JV1)
- Managed System Services (5770-MG1)
- Network Authentication Enablement (5770-NAE)
- OmniFind Text Search Server for Db2 for i (5733-OMF): refer to Appendix for information on how to download 5733-OMF from ESS
- Portable Utilities for i (5733-SC1)
- System Manager (5770-SM1)
- TCP/IP Connectivity Utilities (5770-TC1)
- Transform Services (5770-TS1)
- Universal Manageability Enablement (5770-UME)

Products/Options now made bonus programs

- Rational Application Management Toolset (5770-AMT)
- Advanced DBCS Printer Support (5761-AP1)
- AFP Font Collection (5733-B45)
- Communications Utilities (5761-CM1)
- AFP DBCS Fonts (5769-FN1)
- AFP Fonts (5769-FNT)
- InfoPrint Server (5722-IP1)
- Advanced Job Scheduler (5770-JS1)
- Performance Tools (5770-PT1)
- Query for i (5770-QU1)
- Db2 Query Mgr & SQL Dev Kit (5770-ST1)
- IBM i Access Family (5770-XW1)

IBM i Optional Features: (5770-SS1)

- Media & Storage Extension – Opt 18
- Db2 Symmetric Multiprocessing – Opt 26
- Db2 Multisystem – Opt 27
- PSF 1-55 IPM Support – Opt 36
- PSF 1-100 IPM Support – Opt 37
- PSF AnySpeed – Opt 38
- HA Switchable Resource Opt 41
- HA Journal Performance – Opt 42

IBM i Products and Options – Additional Programs

- Other LPP which are still ordered and are \$0

Other LPP ordered at \$0

- Cryptographic Device Manager (5733-CY3)

IBM i Products and Options with Separate Charge

Products/Options: remaining separately charged

IBM i operating system (5770-SS1)

BRMS (5770-BR1, 5770-BR2)

PowerHA SystemMirror for i (5770-HAS)

Db2 Mirror (5770-DBM)

Migrate While Active (5770-DBM)

Cloud Storage Solutions (5733-ICC)

Rational Development Studio (5770-WDS)

Rational Developer for i (ordered via Power channel (5733-RDW) or Passport Advantage)

IBM i Extensions for VS Code Enterprise Support

IBM Bob and Premium Package for IBM i

ARCAD Observer for IBM i (5733-AO1)

ARCAD RPG Converter for IBM i (5733-AC1)

IBM i Optional Features:

Db2 Data Mirroring (delivered with Db2 Mirror) – Opt 48

IBM i Subscription Transformation

IBM i Subscription Term Licensing

- Power software's strategy is Subscription licensing
- Lower entry price compared to non-expiring
- 1 to 5 year committed terms
 - Predictable and protected pricing for duration of the term
- Subscription Terms includes license and support

- IBM i subscription is available for
 - IBM i 7.2 and later
 - Power9 G models, Power10, and later systems
 - P05/P10/P20/P30 tiers as of Q1 2023
- LPPs for IBM i are available as Subscription

- **Subscription is now required upon purchase of new Power machine**



Transfers from machine to machine

Product	Non-expiring	Subscription
IBM i operating system	Via IBM i Entitlement Transfer Offering for a fee... <ul style="list-style-type: none"> - Transfer from machine to machine within enterprise - Transfer across country borders 	Transfer is available from machine to machine within enterprise, <u>no transfer fee</u> → Contact the Key Center WWSWKEYS@dk.ibm.com
LPPs for i <ul style="list-style-type: none"> • BRMS • PowerHA SystemMirror for i • Rational Development Studio for i • Etc. 	Transfer from machine to machine within the enterprise Transfer across country borders Fastest way to transfer LPPs is via Entitled Systems Support (ESS) portal If the LPP has separate SWMA, SWMA is transferred via extra step: contact... <ul style="list-style-type: none"> - For Brand SWMA, contact Q2C Installs team - For TLS SWMA, contact Q2C TLS team 	Same as IBM i Subscription

Keys

Product	Non-expiring	Subscription
<p>IBM i operating system</p> <p>and</p> <p>LPPs for i</p> <ul style="list-style-type: none">• BRMS• PowerHA SystemMirror for i• Etc.	<p>Permanent keys</p>	<p>Key duration is aligned with subscription term</p>

P05 and P10 Software Tier Offers Conversion Pricing

Conversion price is a “trade-in” price: convert perpetual licenses to subscription

- Delivers investment protection for customers
- Buy a new Power P05 or P10 tier machine
 - Non-expiring IBM i on the donor
 - Active IBM i SWMA is required on the donor
- For P05: a one-time Unlimited Users conversion offering
- For P10: a one-time conversion offering for processors, blocks of users, and Unlimited User entitlement

Refer to the Appendix “Conversion Pricing” in [IBM i Subscription Transformation FAQ](#)

BRMS Subscription Term

- [Subscription term was announce and GA in 1Q2024](#)
- [BRMS Subscription Details and FAQ](#)

	Non-expiring	Subscription Term
Backup, Recovery and Media Services (BRMS)	<p>5770-BR1 BRMS SWMA is covered under IBM i group SWMA</p> <p>Per server, price based on tier</p> <p>Change of service in Sept 2025: usage and known-defect support only (Announcement Letter: AD24-0665)</p>	<p>5770-BR2 License & SWMA combined</p> <p>Per core: One price regardless of tier</p> <p>90 day or 1/2/3/4/5 year terms</p> <p>Consolidate Base & Advanced & Network features – all are provided on one order</p> <p>IBM i 7.4 and later</p>

BRMS August 2024 Announcement

	Announce	Effective withdraw from marketing	Effective change of service	Announcement Letter (U.S. Version)
BRMS (5770-BR1)	8/27/2024	01/01/2025	Change of service: 10/01/2025	AD24-0665

Effective 10/01/2025, change service of BRMS (5770-BR1) to **usage and known-defect support**.

What does this mean?

- Keep using BR1, a stable product
- or
- If you need defect support or need the enhancements or GUI, acquire BR2

5770-BR1 and 5770-BR2 can coexist on the same system: **keep BR1 and BR2 in separate partitions**

IBM i Subscription Bundles for P30/P20 Tiers

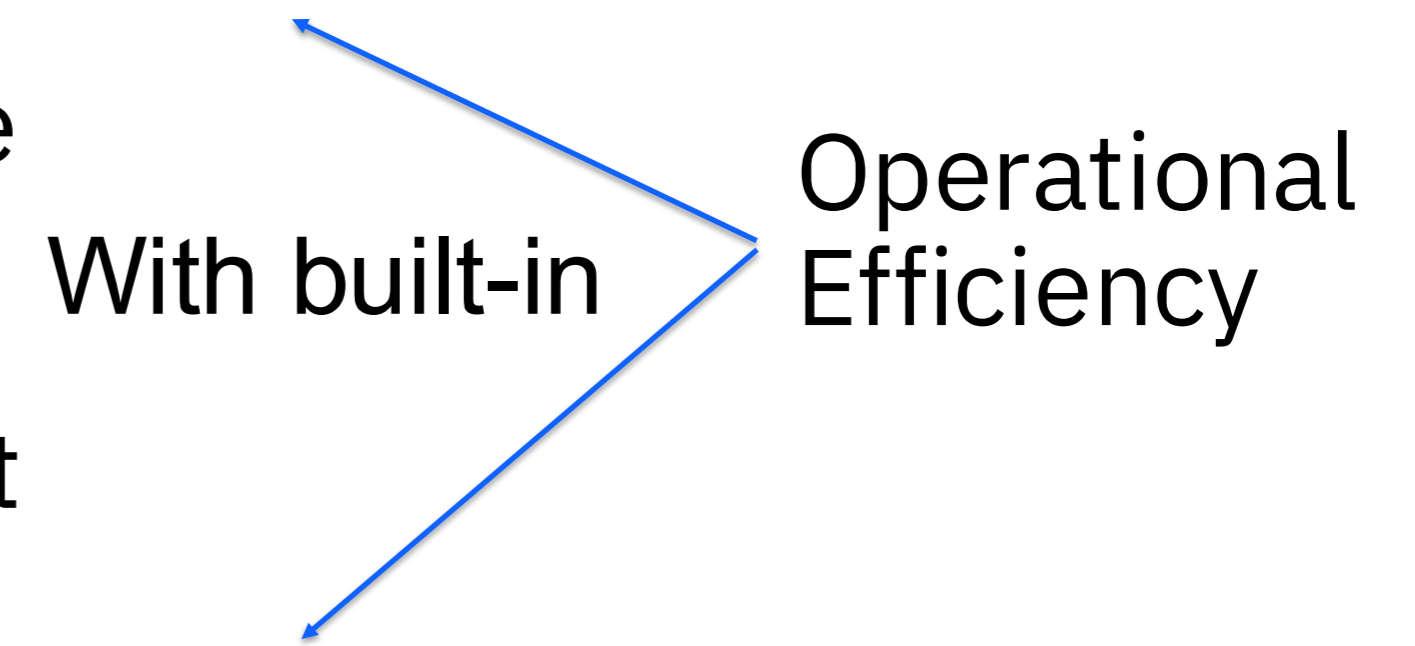
IBM i

IBM i: a fully **integrated, open** application system for mission-critical applications and innovations.

Decades of trusted, high-integrity business data

Business Resilience
1. HA/DR
2. Cyber resilience
3. Security and compliance

App modernization without disruptions



IBM i P30 and P20 Bundles

Simplify Licensing:

Streamline purchase decision, simplify license compliance, and **increase flexibility** to deploy capabilities

Accelerate Innovation:

Gain access to more capabilities right out of the gate to modernize your infrastructure

Reduce Total Investment:

Bundles provide **more value at a lower price** than purchasing ala carte.

IBM i P30 Enterprise Edition

A strategic bundle that offers comprehensive IBM i enterprise capabilities

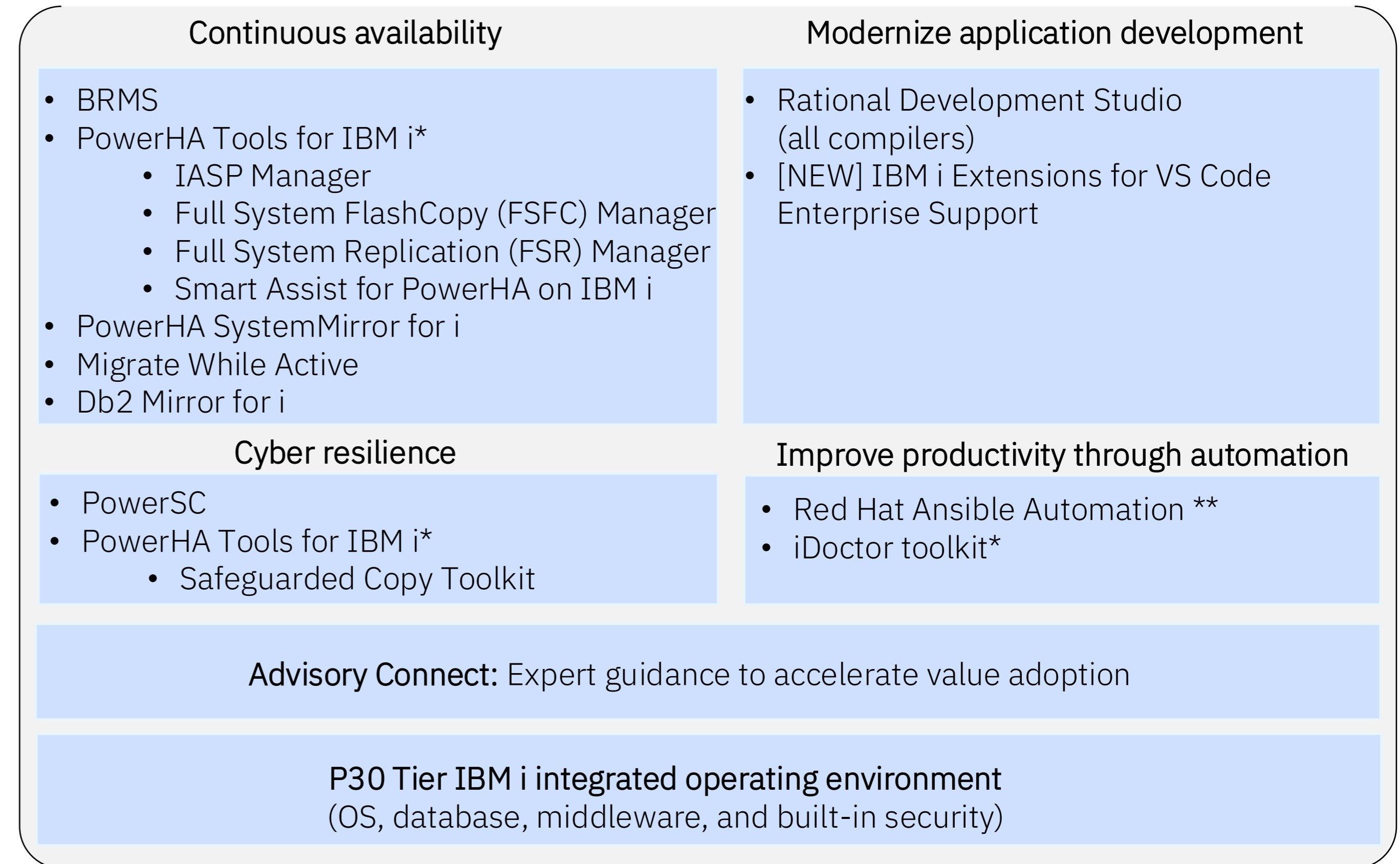
IBM i P20 Standard Edition

A simplified bundle with core capabilities

IBM i P30 Enterprise Edition

A **comprehensive** bundle that helps Enterprise clients unlock more value of IBM i capabilities:

- Advanced HA/DR and cyber security capabilities to maximize uptime for mission-critical workloads
- Automation-driven operational management to increase IT productivity and minimize disruptions
- Open and modern application development and modernization to accelerate innovation
- Expert guidance to accelerate value adoption



• License and maintenance for Expert Labs assets and tool kits only

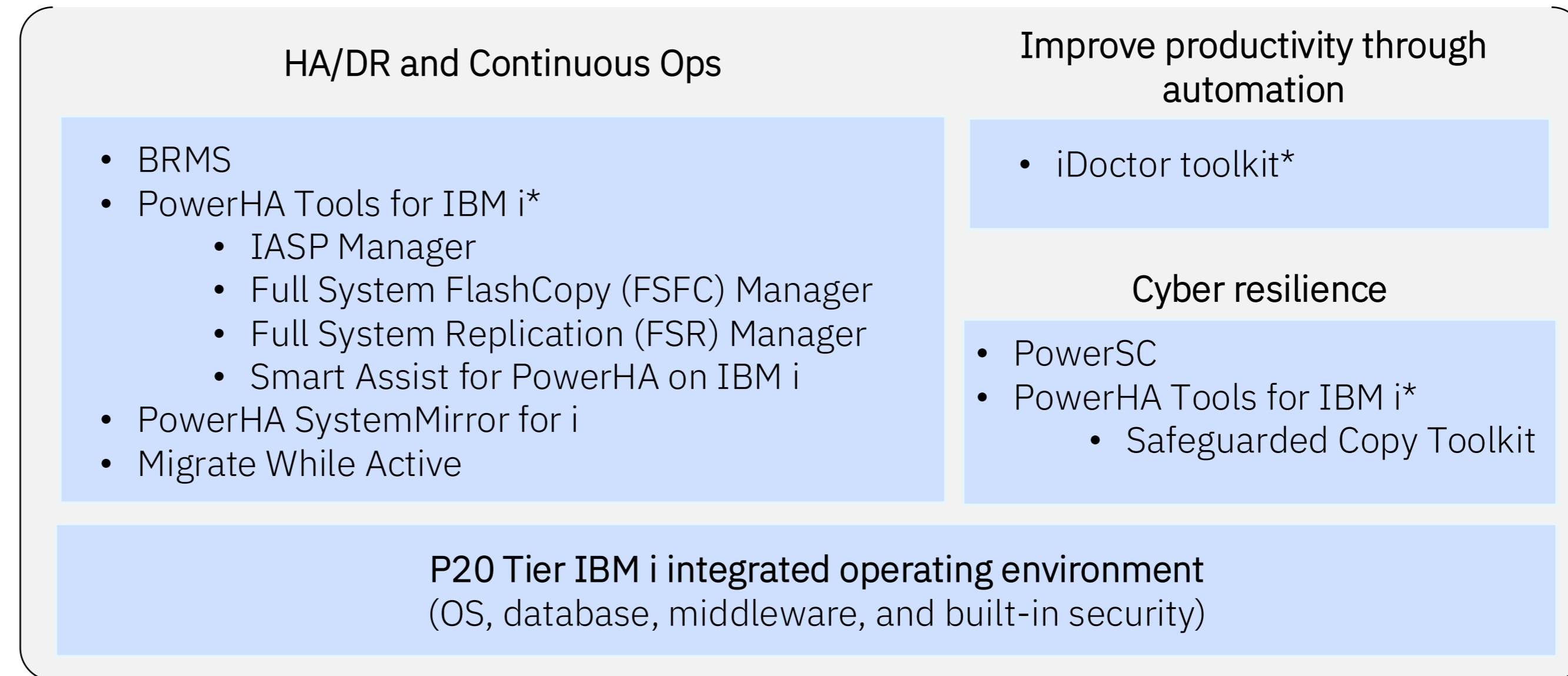
** RedHat Ansible Automation: 1 year support for 100 managed nodes with a minimum purchase of 10 P30 Enterprise Edition cores

- Metric: Annual per core
 - Over 2X the value of bundle (ala carte) price
 - Lower price than previous P30 OS subscription
- Conversion provides investment protection for duration of initial contract

IBM i P20 Standard Edition

A strategic bundle that helps large clients unlock essential IBM i capabilities:

- Advanced HA/DR and cyber security capabilities to maximize uptime for mission-critical workloads
- Automation-driven operational management to increase IT productivity and minimize disruptions



* License and maintenance for assets only

- Additional products may be purchased separately
 - Db2 Mirror, RDS, etc

- Metric: Annual per core
- 1.5X the value of bundle (ala carte) price
- Lower price than previous P20 OS subscription
- Conversion provides investment protection for duration of initial contract

IBM i Transformation FAQ

Refer to [IBM i Subscription Transformation FAQ](#) (on [IBM i License Topics](#)): this document is updated on an ongoing basis.

Changes to any policies or plans will be announced in an IBM announcement letter and then updated in the [IBM i Subscription Transformation FAQ](#) .

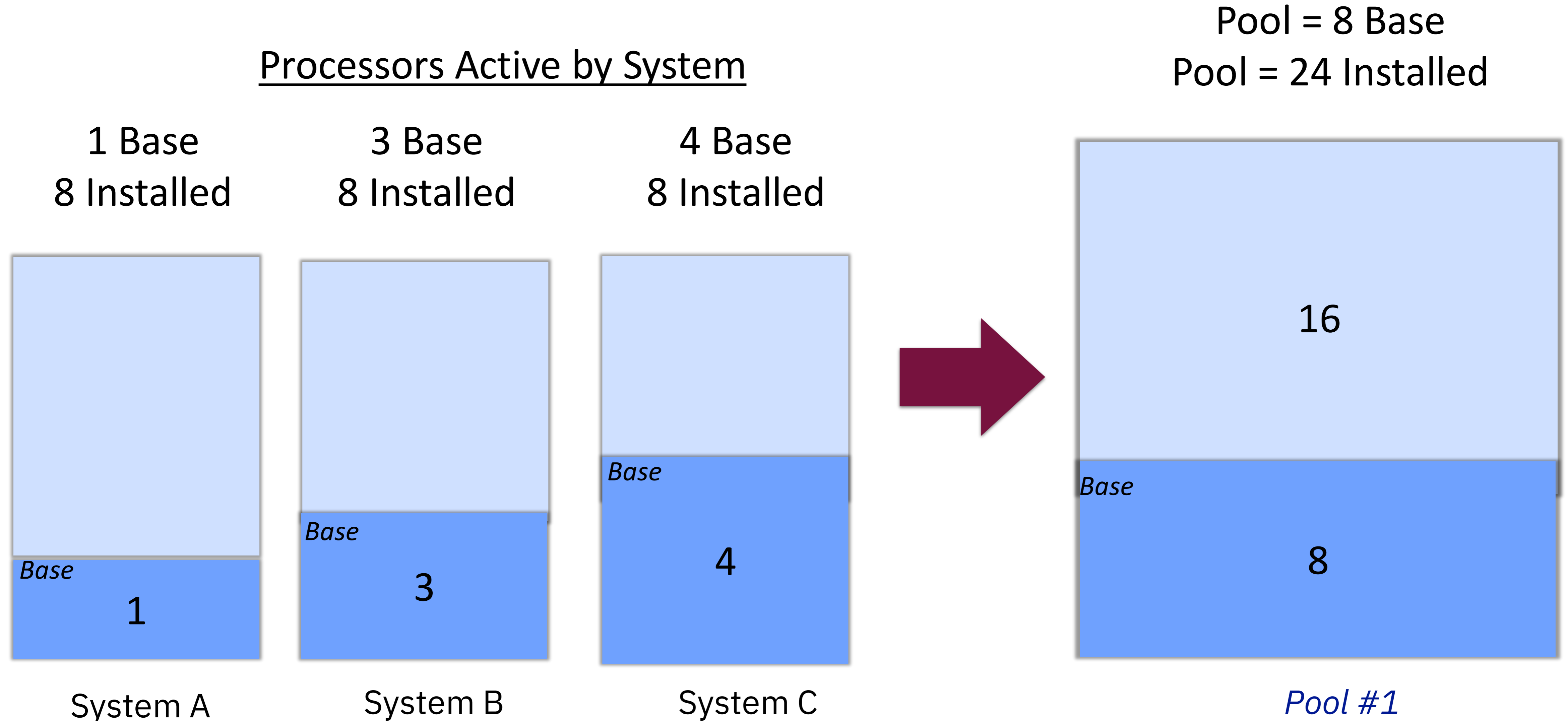
Additional Topics

Shared Dynamic Capacity (PEP 2.0)

All remaining resources are activated when a Pool is started.

Resource usage is metered for minutes above the pool's aggregate Base resources

Processors Active by System



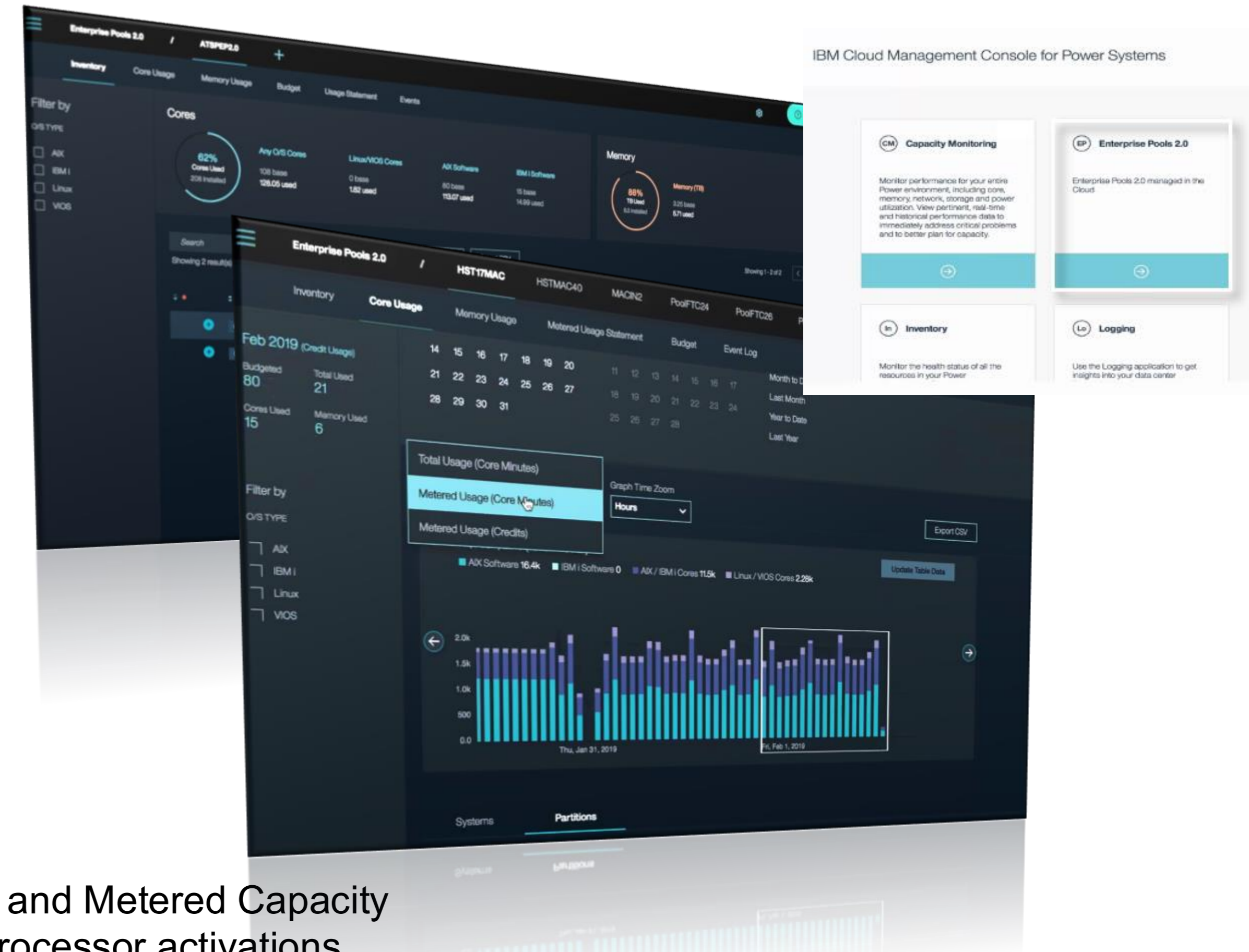
Power Private Cloud with Shared Utility Capacity

“Power Enterprise Pools (PEP) 2.0”

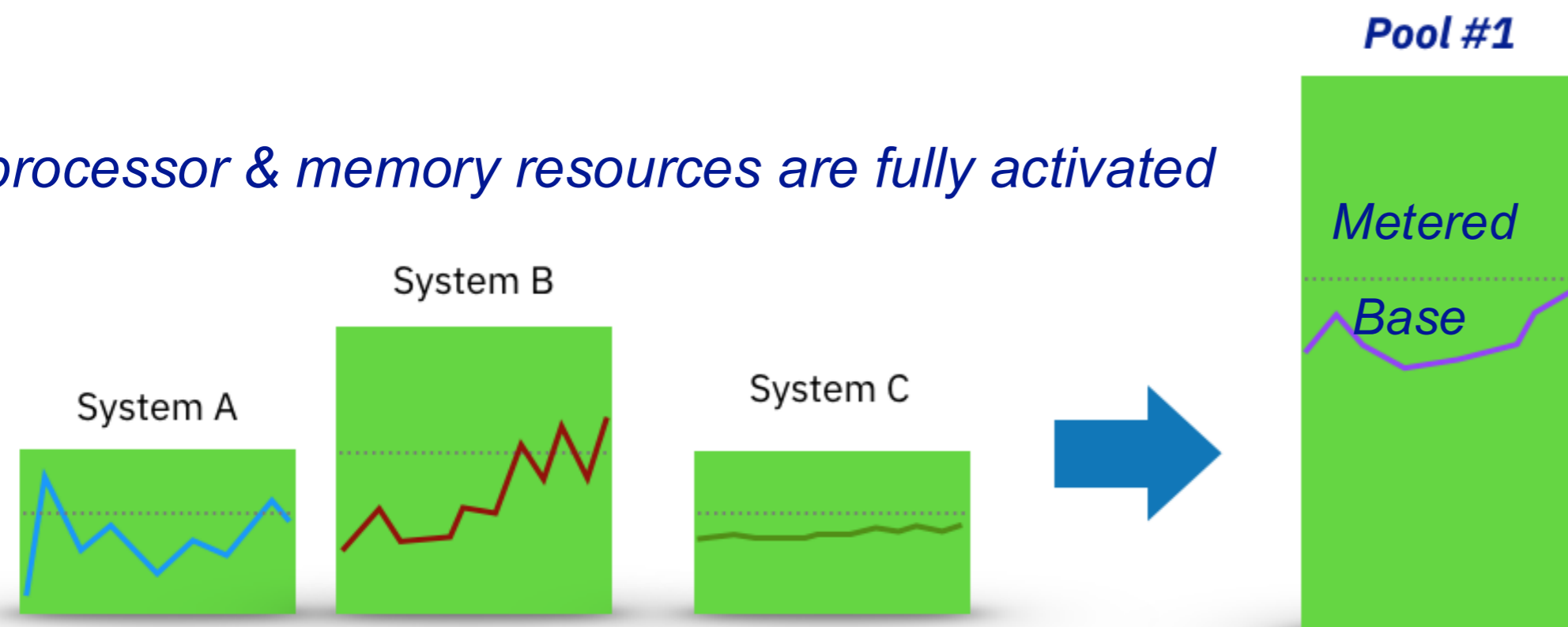
Fully active, metered by the minute

Deploy *Shared Utility Capacity* across a pool of Power E1180/E1080, E1150/E1050, S1122/S1022, S1124/S1024

- Purchase physical servers with Base capacity, which is aggregated and effectively shared across the pool
- Remaining capacity on each server is activated and made available for use when the pool is started
- IBM Cloud Management Console with HMC automatically meters minutes of use any resource use that exceeds the pool’s Base capacity
- Minutes of Metered Capacity use may be debited against Capacity Credits on account or may be invoiced at the end of each month*



All processor & memory resources are fully activated



Base and Metered Capacity

- Processor activations
- Memory activations on E1080/E980 and E1050/E950 systems
- AIX and IBM i entitlements
- SLES subscriptions**
- RHEL subscriptions**
- OpenShift Container Platform**



*Subscriptions sold via IBM as Program Products with supported features included

**Subscriptions sold via IBM as Program Products with supported features included.

From IBM i License Topics...

[FAQ for IBM i in PEP 2.0](#)

Virtual Serial Number

Hardware Serial Number

Partition1	Partition2	Partition3
Serial = 78-12345	Serial = 78-12345	Serial = 78-12345

Hardware Serial = 78-12345

All partitions use the hardware serial number of the physical server

Virtual Serial Number (VSN)

For example, on **9009-22G S/N 78-12345 > order FC #EVSN**

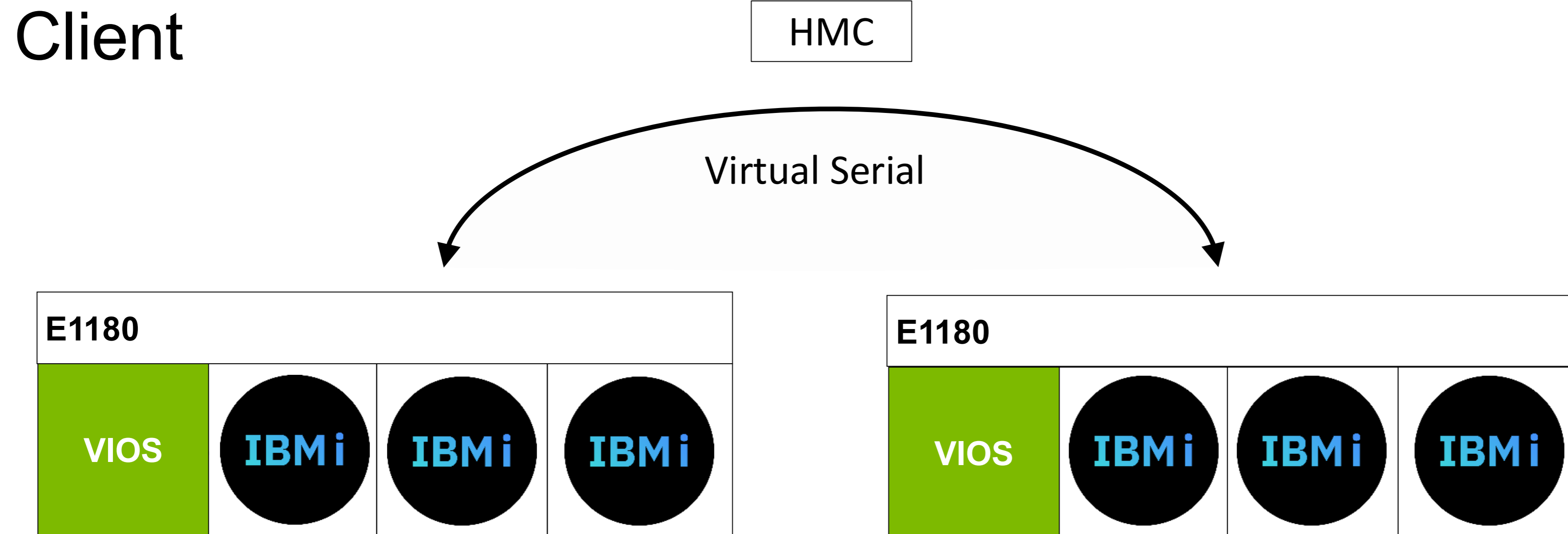
Partition1	Partition2	Partition3
4850-VSN P10		
Serial = V0-11111	Serial = V0-22222	Serial = V0-33333

Hardware Serial = 78-12345

- With a VSN, each partition can have its own serial number that is not tied to the hardware serial number.
- You can also have a combination of VSN and hardware serial number partitions. The hardware serial number is still there and is used to identify the physical box and is the default in a partition if a VSN is not used.
- [Having the IBM i entitlement, keys, and support entitlement on a VSN provides the flexibility to move the partition to a different Power machine.](#)

VSN Example Use Case: Order/Transfer Within a Customer Enterprise

Virtual Serial Number partitions can be moved across systems where the HMC can see both servers or has network connectivity to another HMC that can see the other server. This is the same limitation as LPM.



VSNs are supported in Power Enterprise Pools (PEP) 2.0 environments starting in 4Q2023
[Announcement October 24, 2023](#)

From IBM i License Topics...

[Virtual Serial Numbers with IBM i](#)

From IBM i Group SWMA to Subscription

“IBM i Group SWMA” in this context refers to SWMA associated with non-expiring IBM i

With Subscription Term licenses, each program has its own SWMA

- [IBM i Group SWMA Products](#)
- [LPPs with Separate SWMA](#)

