



COMMON EUROPE CONGRESS 2026

14 - 17 June
Lyon, France

The largest conference in Europe
for solutions around IBM Power (IBM i, AIX, Linux) & IBM Storage

common
EUROPE

www.comeur.org

common
FRANCE

 **LYON** | CENTRE DE CONGRÈS
EVENTS DE LYON



**Welcome to Lyon, France
and the 2026 Common Europe Congress**

**Bienvenue à Lyon, en France,
et au Congrès de Common Europe 2026**

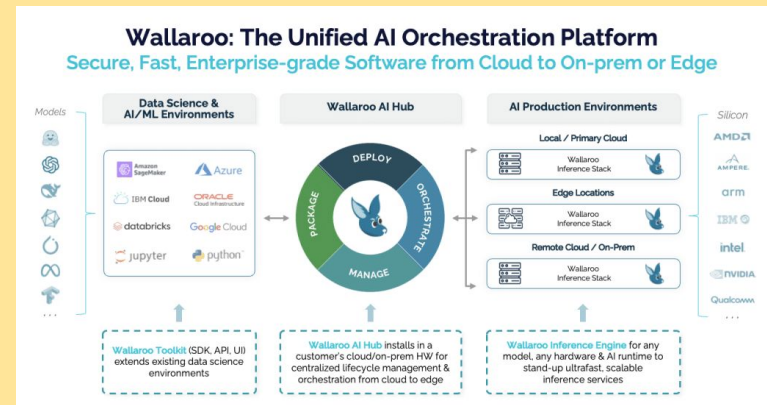


COMMON EUROPE CONGRESS 2026
14 - 17 June
Lyon, France

The largest conference in Europe for solutions around IBM Power (IBM i, AIX, Linux) & IBM Storage

LYON EVENTS | CENTRE DE CONGRÈS DE LYON

common EUROPE | www.comeur.org | common FRANCE



Introducing the AI Starter Kit

Jack Woehr
 Seiden Group LLC

Disclaimers

- Not speaking for IBM
- Not speaking for Wallaroo
- Just playing with the technology

C. A. Rotwang in [Fritz Lang's](#) 1927 [science fiction film *Metropolis*](#),^[1] played by [Rudolf Klein-Rogge](#).^[1] *public domain*



Wallaroo: Software Bridge from Pilot to ROI on IBM Infrastructure

Wallaroo

- ✓ **Portable via Autopackaging & Autodeployment:**
Turn models into deployed inference services, dramatically reducing the learning curve & time-to-production
- ✓ **Efficient, State-of-the-Art Inference:**
Automatically deploy complex inference configurations software-optimized to take advantage of specialized hardware (prefill, decode, KV-cache transfer...)
- ✓ **Smart Inference Orchestration:** Optimize a fleet of runtimes (e.g. vLLM, SGLang...) across a pool of hardware through smart routing and resource management
- ✓ **Life-cycle Management:** Continuously monitor the performance and behavior of deployed solutions, catching issues before they become problems



Wallaroo Benefits for IBM Customers

- ✓ **Unified Experience for any Hardware**
Deploy AI in minutes on different HW without learning new stacks, including Power, Spyre, etc.
- ✓ **Frictionless Migration To IBM Infrastructure**
Zero-code re-platforming of AI workloads from hyperscalers to IBM Cloud or on-prem data centers in minutes, not days or weeks
- ✓ **Fast, Observable Agentic Inference at Scale**
Smart batching, heterogeneous, disaggregated serving for scalability, low-latency, and high throughput combined with model monitoring
- ✓ **Hybrid, Cloud-to-Edge & Sovereign AI**
Unique be-spoke, lightweight architecture + private air-gapped support allow for flexible and secure deployments



"The flexibility it enables for deploying AI and running inference on a wide range of models and hardware architectures is critical for accelerating and scaling our AI initiatives."

Jesse Harmon - Principal Enterprise Architect

AI for i - Announcing the Wallaroo AI Starter Kit



Why?

Deploy AI with ease

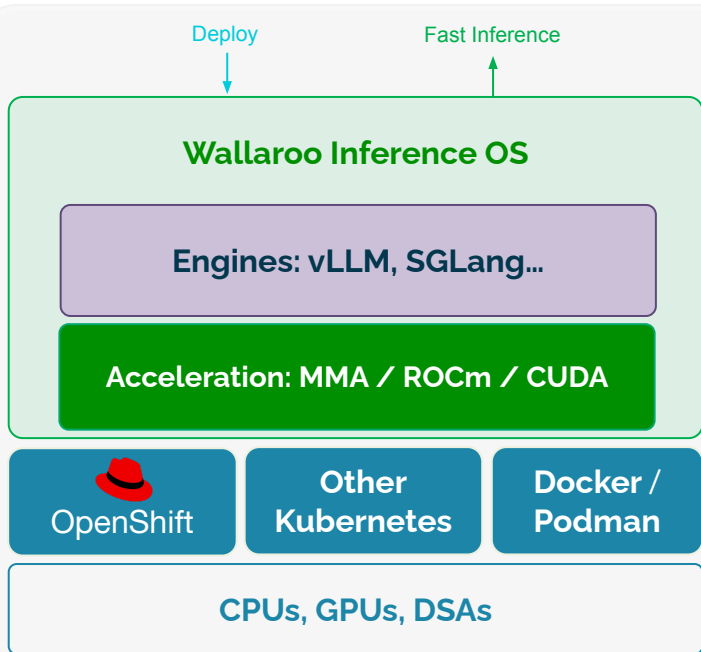
Build solutions with the confidence of enterprise support

Leverage Power's MMA and Spyre Technology

Integrate inferencing activity with core business

Wallaroo: Deploy & Run AI Fast – any model, any Infrastructure

- ✓ Combine hetero silicon to run a model, council of models, or agentic workloads - Includes Power + GPUs + Spyre
- ✓ Lightweight, scalable, portable, efficient inference



Easy, Automated Build & Deploy

- **Auto-package** - compile & package models and libraries for the underlying HW
- **Auto-deploy** - orchestrate hardware, deploy packages with dependencies
- **Management** - Load balancing, autoscaling, dynamic reconfiguration

High-performance, Heterogeneous Inference

- Manage network, CPU/GPU/DSA, memory, routing of tasks/models to compute
- Flexible, Lightweight Inference Stack

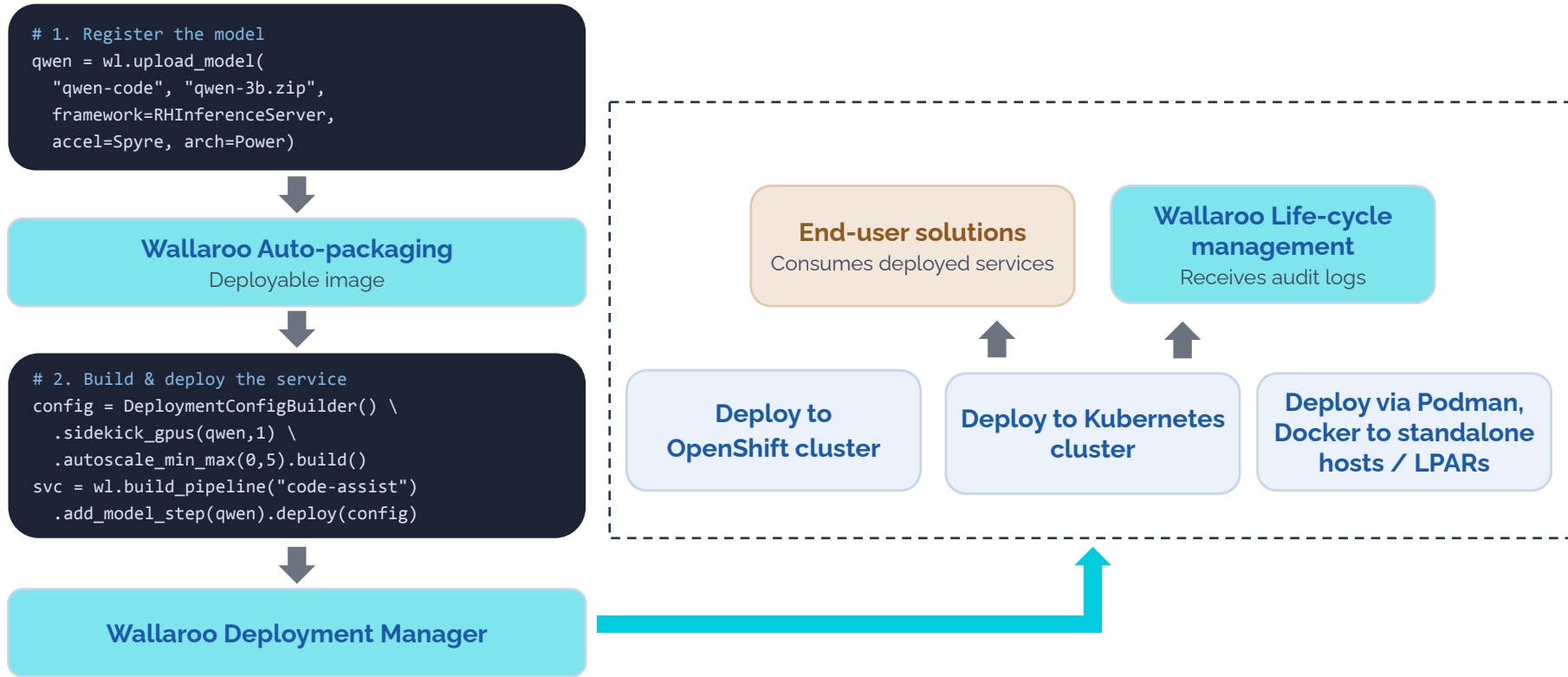
Inference Lifecycle management

- Model updates, version management, reconfiguration/redeployment

Enterprise Integration & Agentic Security

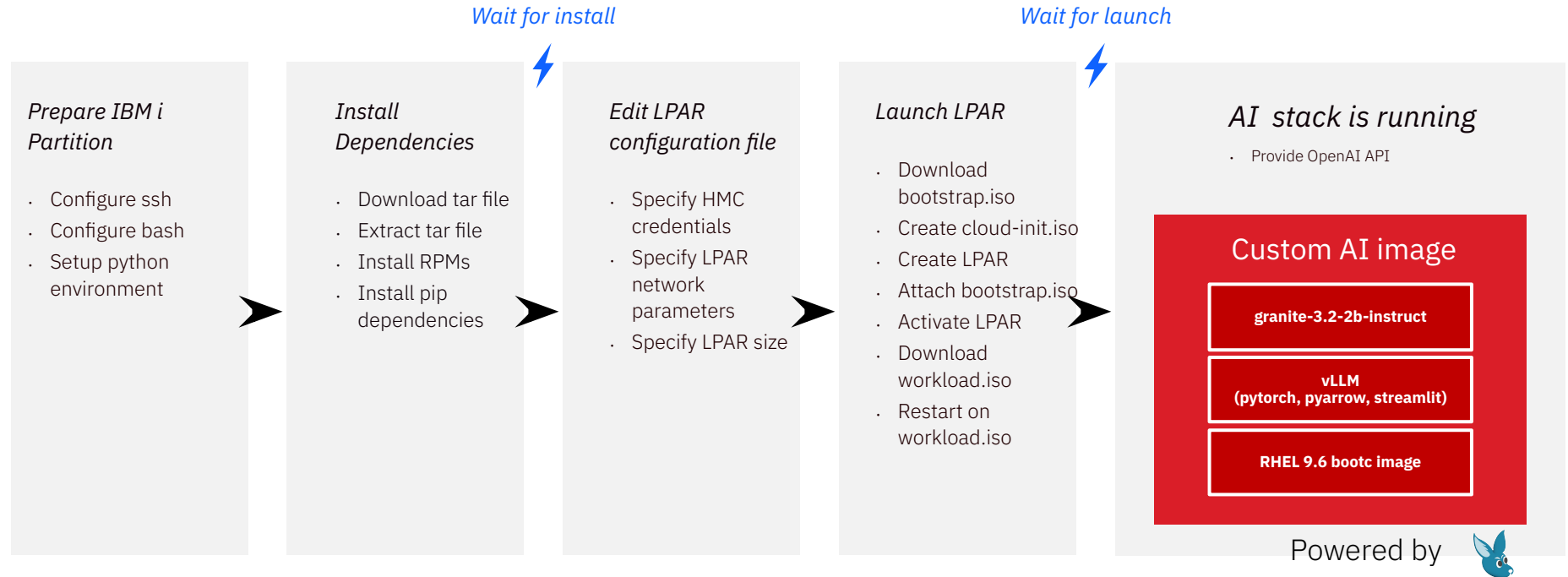
- Flexible integration with databases, 3rd party tools & services
- Encryption, User and Agent access control, Air-gapped deployments

Wallaroo Automation Reduces Time-to-Production



Wallaroo AI Starter Kit – Deployment Flow

Phases



AI Build Workflow For IBM i developers– Powered by Wallaroo

Phases

Connect to Operations Center

- Leverage Wallaroo Python SDK

Load Model

- Upload model object in Wallaroo from raw model files or pre-compiled models using pre-built integration of IBM Power libraries (MMA and Spyre) and runtimes (vLLM, onnx, PyTorch, ...)
- Configure Model requirements (OpenAI compatibility, continuous batching etc.)

Deploy model

- Select default or Specify custom configuration (CPU, Accelerator cards, memory, autoscaling etc.)
- Define as a pipeline in Wallaroo
- Publish in Wallaroo as an endpoint or as deployable artifact compatible with docker, podman, helm or bootable containers.

Inference Endpoint

Wallaroo inference Server

Wallaroo Model (e.g llama, granite etc.)

Wallaroo Power Engine runtime (vLLM, onnx, ...)

IBM i



PURPOSE-BUILT SYSTEM SOLUTIONS FOR PARTS DISTRIBUTION



Parts Solutions for:

- Automotive (Traditional)
- Internal DMS Assist
- Auto E
- Heavy
- Marine
- Power
- Recre



GET

Hi! I'm DMS Assist. How can I help you today?

How DMS helps in auto parts sales?

Can DMS provide financials?

Does DMS have eCommerce solutions?

How can DMS help my company?

Type something...

Advanced Supply Chain Solutions

Orders, Cataloging & Payments

- Multichannel Order Processing
- Auto - Truck - Marine Industry Catalogs
- DMS Specialty Catalogs
- Integrated Card Payments



EDI

- Manufacturers to Customers
- Distributors to Suppliers & Customers
- AS-2 - SFTP - XML EDI Options
- Allows Phantom Inventory Locations



eCommerce

- B2B & B2C Hybrid websites
- Fully Integrated with all Business Systems
- Ability to Sell on eBay & Amazon Platforms
- Responsive for All Devices



Business Intelligence

- Real-time Dashboards for Operations & Financials
- Interpretive Charts & Graphs
- Easy Export to Excel
- Mobile Apps for Execs & Salesmen



IBM Power & Wallaroo: Better Together

IBM



- Extensive ecosystem of tools & libraries (e.g MMA, Spyre).
- Streamlined development & deployment of optimization libraries.



Wallaroo.AI

- **Optimized for Power Architecture.**
- Integrates **inference acceleration capabilities** of IBM Power.
- **Fully utilizing** IBM Power hardware for.
 - **Faster processing times**
 - **Reduced latency**
 - **Increased throughput for AI workloads**

IBM



- **Taking full advantage** of IBM Power optimizations.
- **Delivering efficiency and versatility** across different deployment scenarios (cloud, edge and on-prem).
- Validated across a variety of AI models (CV, LLMs) for **robust performance & reliability** against competing architectures (x86 and NVIDIA)
- Leading to **maximized inference performance and efficient AI workflows.**

Why Wallaroo?

Wallaroo's key Innovations enable **ease-of-use, efficiency & flexibility** for enterprises & AI developers.

✓ Extends inference-as-a-service, cloud platforms & open-source solutions to environments & workflows to enable hybrid AI use cases.

Automation

4-6x Faster Time to Value

Deploy from arbitrary code to complex multi-step AI pipelines

Optimization & Privacy

2-10x inference performance

Authentication, encryption, air-gapped deployment support

Unified Control Plane

Centralized monitoring & mgmt

Cloud, Multi-cloud, On-prem, Edge, & Hybrid



 My Default Workspace

jwoehr@alanseiden.com

 No Pipelines

[View Pipelines](#)

 No Models

[View Models](#)

Launch JupyterHub

 Collaborators (1)



Owner
jwoehr@alanseiden.com

You

Invite Collaborators

 Activity



No activity to show



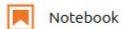
/ PowerUP Demo /

Name	Modified
rag	14 days ago
recommender	13 days ago



Launcher

PowerUP Demo



Notebook



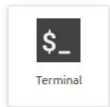
Python 3 (ipykernel)



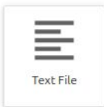
Console



Python 3 (ipykernel)



Terminal



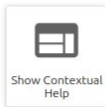
Text File



Markdown File



Python File



Show Contextual Help

File Explorer sidebar showing the directory structure for 'PowerUP Demo / rag /'. The sidebar includes a search bar, a list of files and folders, and a 'Name' column with a sort arrow. The files listed are:

Name	Modified
demo_rag_byop	7 days ago
demo_rag.zip	14 days ago
RAG with IBM i & Wallaroo - Development ...	14 days ago

Launcher window showing options for creating a new file or notebook. The title bar reads 'Launcher'. The main content area is titled 'PowerUP Demo/rag' and contains the following sections:

- Notebook**: A section with a notebook icon and a 'Python 3 (pykernel)' icon.
- Console**: A section with a terminal icon and a 'Python 3 (pykernel)' icon.
- Other**: A section with five icons: Terminal, Text File, Markdown File, Python File, and Show Contextual Help.



/ ... / rag / demo_rag_byop /

Name	Modified
artifacts	14 days ago
faiss-1.13.2-py3-none-linux_ppc64le.whl	2 months ago
llama_cpp_python-0.3.20-py3-none-manyli...	20 days ago
main.py	7 days ago
pyodbc-5.3.0-cp310-cp310-manylinux2014...	20 days ago
requirements.txt	20 days ago
torch-2.0.1-cp310-cp310-linux_ppc64le.whl	2 months ago

Launcher X main.py X +

```
1 |from typing import Any, Set, Dict
2
3 import torch
4 from transformers import AutoTokenizer, AutoModel
5 import faiss
6 from llama_cpp import Llama
7 import numpy as np
8 import os
9 import pyodbc
10
11 from mac.config.inference import CustomInferenceConfig
12 from mac.inference import Inference
13 from mac.inference.creation import InferenceBuilder
14 from mac.types import InferenceData
15
16 import logging
17 import sys
18 logging.basicConfig(level=logging.DEBUG, format='%(asctime)s - %(levelname)s - %(message)s', stream=sys.stdout)
19 logger = logging.getLogger(__name__)
20
21
22 def mean_pooling(model_output, attention_mask):
23     token_embeddings = model_output.last_hidden_state
24
25     input_mask_expanded = attention_mask.unsqueeze(-1).expand(token_embeddings.size()).float()
26
27     return (token_embeddings * input_mask_expanded).sum(1) / input_mask_expanded.sum(1)
28
29 def embed_texts(model, tokenizer, device, texts):
30     model.eval()
31
32     encoded = tokenizer(
33         texts,
34         padding=True,
35         truncation=True,
36         return_tensors="pt"
37     ).to(device)
38
39     with torch.no_grad():
40         output = model(**encoded)
41         embeddings = mean_pooling(output, encoded["attention_mask"])
42
```

Name	Modified
/ ... / recommender / recommender_demo /	
artifacts	14 days ago
faiss-1.13.2-py3-none-linux_ppc64le.whl	last month
main.py	23 days ago
opencv_python_headless-4.13.0.92-cp310-...	24 days ago
pillow-11.1.0-cp310-cp310-linux_ppc64le.whl	last month
pyodbc-5.3.0-cp310-cp310-manylinux2014...	last month
requirements.txt	24 days ago
torch-2.0.1-cp310-cp310-linux_ppc64le.whl	last month
torchvision-0.15.2-cp310-cp310-linux_ppc6...	last month

```

1 import io
2 import os
3 import logging
4 import pyodbc
5 import torch
6 import numpy as np
7 import cv2
8 import faiss
9 from PIL import Image
10 from transformers import AutoModel, AutoImageProcessor
11 import torch.nn.functional as F
12 from pathlib import Path
13 from typing import Dict, Set, Any
14
15 from mac.inference import Inference
16 from mac.inference.creation import InferenceBuilder
17 from mac.types import InferenceData
18 from mac.config.inference import CustomInferenceConfig
19
20 logging.basicConfig(level=logging.INFO)
21 logger = logging.getLogger(__name__)
22
23
24
25 @torch.no_grad()
26 def get_embedding(processor, device, model, img):
27     # Handle list or numpy array input
28     if isinstance(img, (list, np.ndarray)):
29         img = np.array(img, dtype=np.uint8)
30         img = Image.fromarray(img)
31
32     inputs = processor(images=img, return_tensors="pt")
33     inputs = {k: v.to(device) for k, v in inputs.items()}
34     outputs = model(**inputs)
35     emb = outputs.last_hidden_state[:, 0].squeeze(0)
36     emb = F.normalize(emb, dim=-1)
37     # FAISS expects NumPy arrays, not PyTorch tensors
38     return emb.cpu().numpy()
39
40 class BYOPInference(Inference):
41     @property
42     def expected_model_types(self) -> Set[Any]:

```

```

misc.sql x
1 -- Misc SQL for the Wallaroo WASK demo
2
3 select * from qsys2.systables where table_schema = 'WALLAROO';
4 select * from wallaroo.image_table;
5 delete from wallaroo.image_table;
6
7 select * from wallaroo.auto_parts_qa;
8 select * from wallaroo.auto_parts_qa where question like '%belt%';
9

```

FILENAME	IMAGE
75.jpg	FFD8FFE000104A46494600010100000100010000FFDB00430008060607060508...
59.jpg	FFD8FFE000104A46494600010100000100010000FFDB00430008060607060508...
71.jpg	FFD8FFE000104A46494600010100000100010000FFDB00430008060607060508...
65.jpg	FFD8FFE000104A46494600010100000100010000FFDB00430008060607060508...
64.jpg	FFD8FFE000104A46494600010100000100010000FFDB00430008060607060508...
70.jpg	FFD8FFE000104A46494600010100000100010000FFDB00430008060607060508...
58.jpg	FFD8FFE000104A46494600010100000100010000FFDB00430008060607060508...
8.jpg	FFD8FFE000104A46494600010100000100010000FFDB00430008060607060508...
66.jpg	FFD8FFE000104A46494600010100000100010000FFDB00430008060607060508...
72.jpg	FFD8FFE000104A46494600010100000100010000FFDB00430008060607060508...
99.jpg	FFD8FFE000104A46494600010100000100010000FFDB00430008060607060508...
98.jpg	FFD8FFE000104A46494600010100000100010000FFDB00430008060607060508...
73.jpg	FFD8FFE000104A46494600010100000100010000FFDB00430008060607060508...
67.jpg	FFD8FFE000104A46494600010100000100010000FFDB00430008060607060508...
9.jpg	FFD8FFE000104A46494600010100000100010000FFDB00430008060607060508...
14.jpg	FFD8FFE000104A46494600010100000100010000FFDB00430008060607060508...
28.jpg	FFD8FFE000104A46494600010100000100010000FFDB00430008060607060508...
29.jpg	FFD8FFE000104A46494600010100000100010000FFDB00430008060607060508...
15.jpg	FFD8FFE000104A46494600010100000100010000FFDB00430008060607060508...
17.jpg	FFD8FFE000104A46494600010100000100010000FFDB00430008060607060508...
16.jpg	FFD8FFE000104A46494600010100000100010000FFDB00430008060607060508...
12.jpg	FFD8FFE000104A46494600010100000100010000FFDB00430008060607060508...
13.jpg	FFD8FFE000104A46494600010100000100010000FFDB00430008060607060508...
39.jpg	FFD8FFE000104A46494600010100000100010000FFDB00430008060607060508...
11.jpg	FFD8FFE000104A46494600010100000100010000FFDB00430008060607060508...

Working... 06/11/2026, 07:19:29 PM

Messages select * from wallaroo.image_table

Job: 030382/QUER_NC/QZDAS0INIT JDBC Configuration: Default User: JW0EHR Lines: 9 Ln: 5 Col: 1

misc.sql *

```

1 -- Misc SQL for the Wallaroo WASK demo
2
3 select * from qsys2.systables where table_schema = 'WALLAROO';
4 select * from wallaroo.image_table;
5 delete from wallaroo.image_table;
6
7 select * from wallaroo.auto_parts_qa;
8 select * from wallaroo.auto_parts_qa where question like '%belt%';
9

```

ID	QUESTION	ANSWER
1	I have a 2018 Honda Accord 2.0T. What brake pads fit?	Brake pad fitment for the 2018 Honda Accord 2.0T depends on trim...
2	What rotors fit a 2020 Toyota Camry SE?	Brake rotors for the 2018-2022 Toyota Camry SE are available in ...
3	I drive a 2021 Honda CR-V. What oil filter do I need?	Oil filter fitment for the 2021 Honda CR-V depends on engine typ...
4	What shocks fit a 2017 Toyota Corolla LE?	KYB Excel-G and OEM replacement shocks are available for the 201...
5	I have a 2019 Subaru Impreza. What brake pads fit?	Brake pads for the 2019 Subaru Impreza are available from brands...
6	What battery fits a 2020 Honda Civic LX?	Group Size 51R batteries are commonly used for the 2020 Honda Ci...
7	I own a 2022 Ford F-150. What spark plugs fit?	Spark plug fitment for the 2022 Ford F-150 depends on engine typ...
8	What alternator fits a 2018 Toyota RAV4?	Alternator fitment for the 2018 Toyota RAV4 depends on engine co...
9	I have a 2016 Mazda 3. What cabin air filter do I need?	Cabin air filters for the 2014-2018 Mazda 3 are widely available...
10	What exhaust fits a 2020 Honda Civic Si?	Aftermarket cat-back exhaust systems are available for the 2020 ...
11	I drive a 2019 Nissan Rogue. What wiper blades fit?	Wiper blade sizes for the 2019 Nissan Rogue depend on trim, but ...
12	What control arms fit a 2018 Honda Accord EX?	Control arms for the 2018 Honda Accord EX are available as OEM a...
13	I own a 2021 Toyota Tacoma. What shocks fit?	Bilstein, KYB, and OEM shocks are available for the 2016-2023 To...
14	What fuel pump fits a 2017 Ford Escape?	Fuel pump fitment for the 2017 Ford Escape depends on engine typ...
15	I have a 2020 Hyundai Elantra. What brake pads fit?	Brake pads for the 2019-2020 Hyundai Elantra are available from ...
16	What radiator fits a 2018 Honda Civic?	Radiators for the 2016-2021 Honda Civic are available in OEM and...
17	I drive a 2022 Subaru Outback. What air filter do I need?	Air filter fitment for the 2022 Subaru Outback depends on engine...
18	What serpentine belt fits a 2019 Toyota Corolla?	Serpentine belt fitment for the 2019 Toyota Corolla depends on e...
19	I own a 2020 Jeep Wrangler. What lift kits fit?	Lift kits for the 2020 Jeep Wrangler vary by lift height and sus...
20	What transmission fluid does a 2018 Toyota Camry use?	The 2018 Toyota Camry uses Toyota WS automatic transmission flui...
21	I have a 2017 Chevrolet Malibu. What spark plugs fit?	Spark plugs for the 2016-2018 Chevrolet Malibu depend on engine ...
22	What wheel bearings fit a 2019 Honda Civic?	Wheel bearings for the 2016-2021 Honda Civic are available as OE...
23	I drive a 2021 Kia Forte. What alternator fits?	Alternator fitment for the 2021 Kia Forte depends on engine conf...
24	What brake rotors fit a 2018 Hyundai Sonata?	Brake rotors for the 2015-2019 Hyundai Sonata are available in O...
25	I own a 2020 Ford Explorer. What shocks fit?	Shock absorber fitment for the 2020 Ford Explorer depends on sus...

Done: 87 rows retrieved.

06/11/2026, 07:18:16 PM

@Messages select * from wallaroo.auto_parts_qa

Job: 030382/QUUSER_NC/QZDASOINIT JDBC Configuration: Default User: JW0EHR

Lines: 9 Ln: 8 Col: 1

