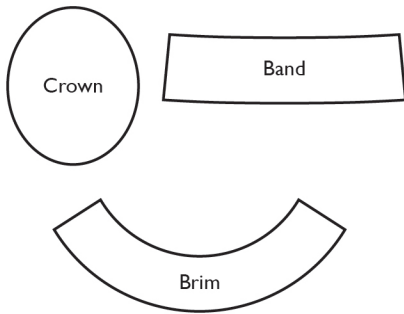
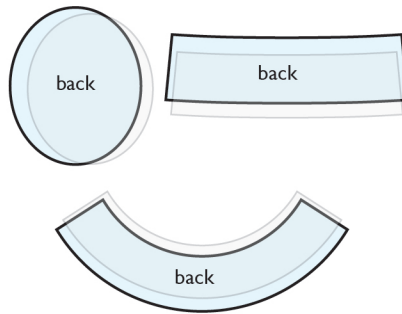




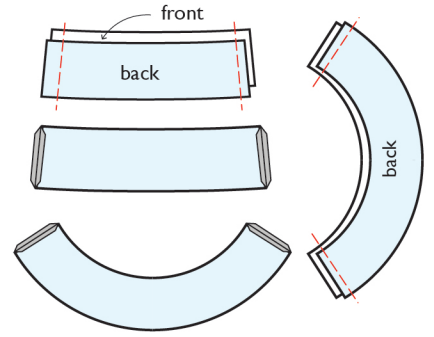
Sun Hat



1. Cut out pieces for the hat. One set in the main fabric, one set in the lining fabric, and one set in interfacing.

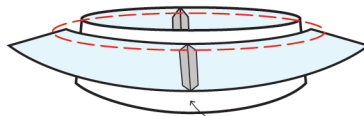
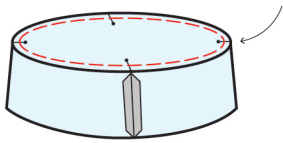


2. Fuse the interfacing (structural support) to the back side of the main fabric.

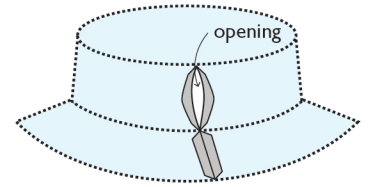


3. Sew the 2 main fabric band pieces together with the fabric right sides facing. Repeat the same for the brim pieces. Press the side seams open.

Pin the 4 notches to the side seam and middle points of the band to insure even spread.



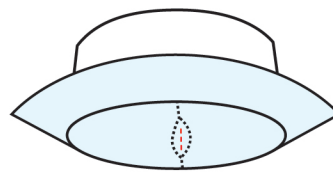
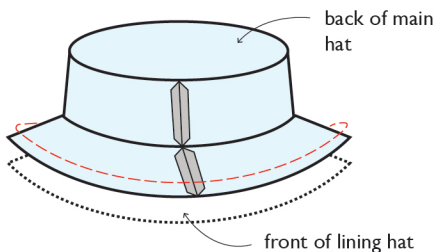
Pin the open seam of the brim to the open seam of the band and the middle of the brim to middle of the band.



4. Sew the crown to the band, right sides together. Match the open seam of the band to middle of long side of the crown.

5. Attach the edge of the band from the previous step to the top edge of the brim, right sides together.

6. Repeat steps 3 to 5 for the lining pieces, except leave an opening in order to flip the hat right side out later.



stitch opening shut

7. Sew the main hat and the lining hat together at the bottom rim, right sides together.

8. Flip the hat through the opening so the front of the fabric shows. Stitch the opening in the lining shut.

9. You can top stitch along the edge of the brim to secure the main hat and lining together



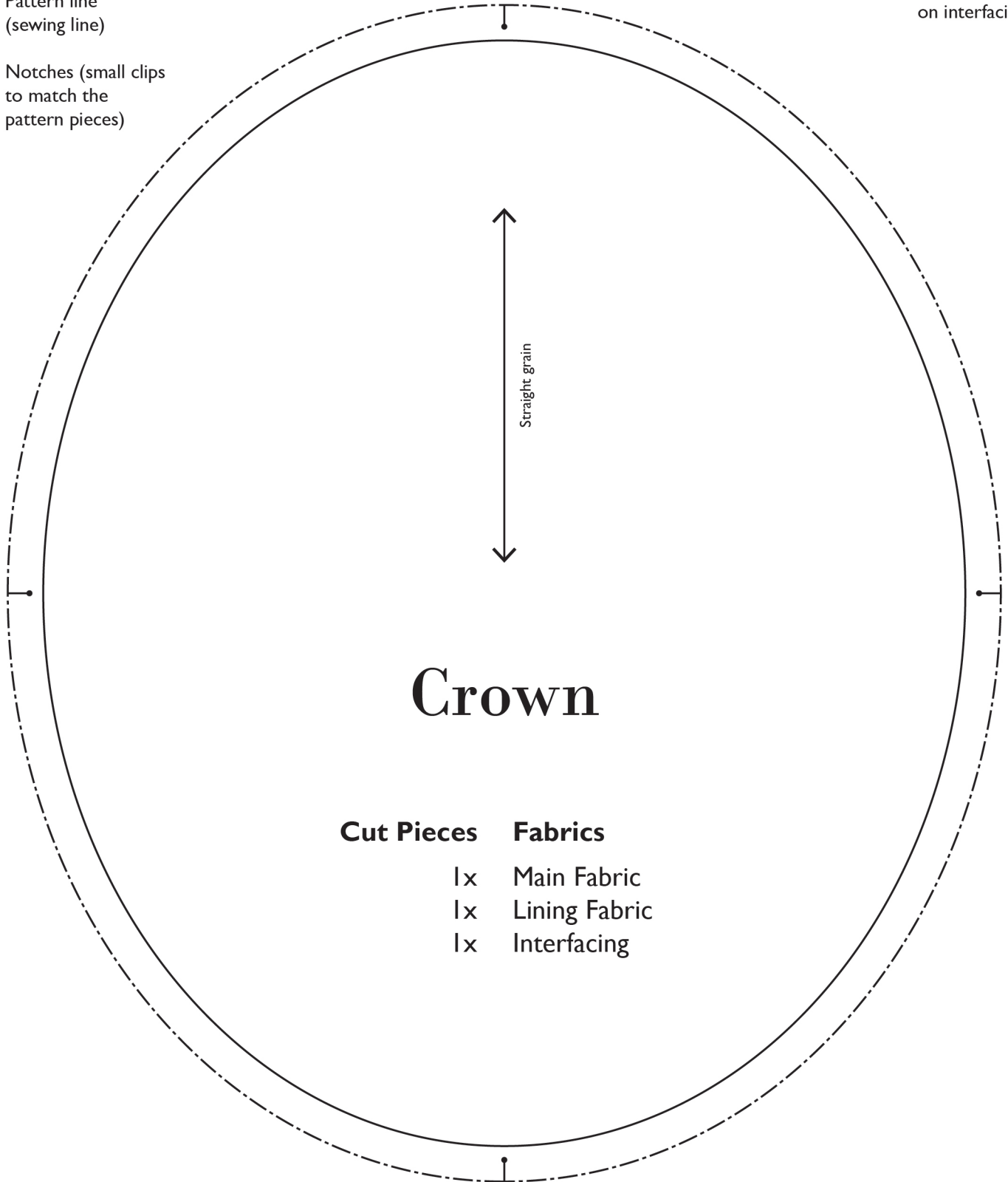
1" X 1"
SCALE
TEST BOX

- - - 1/4" Seam allowance
(cutting line)

— Pattern line
(sewing line)

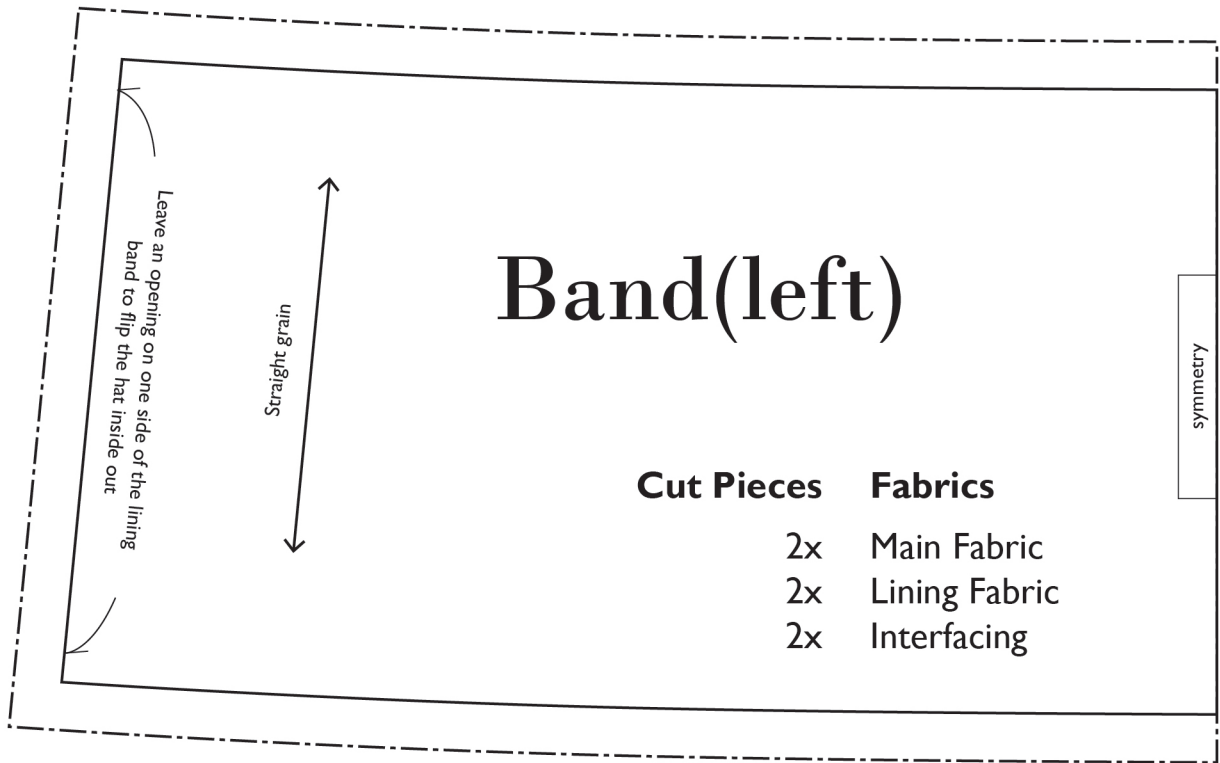
• Notches (small clips
to match the
pattern pieces)

* Do not include
seam allowance
on interfacing.

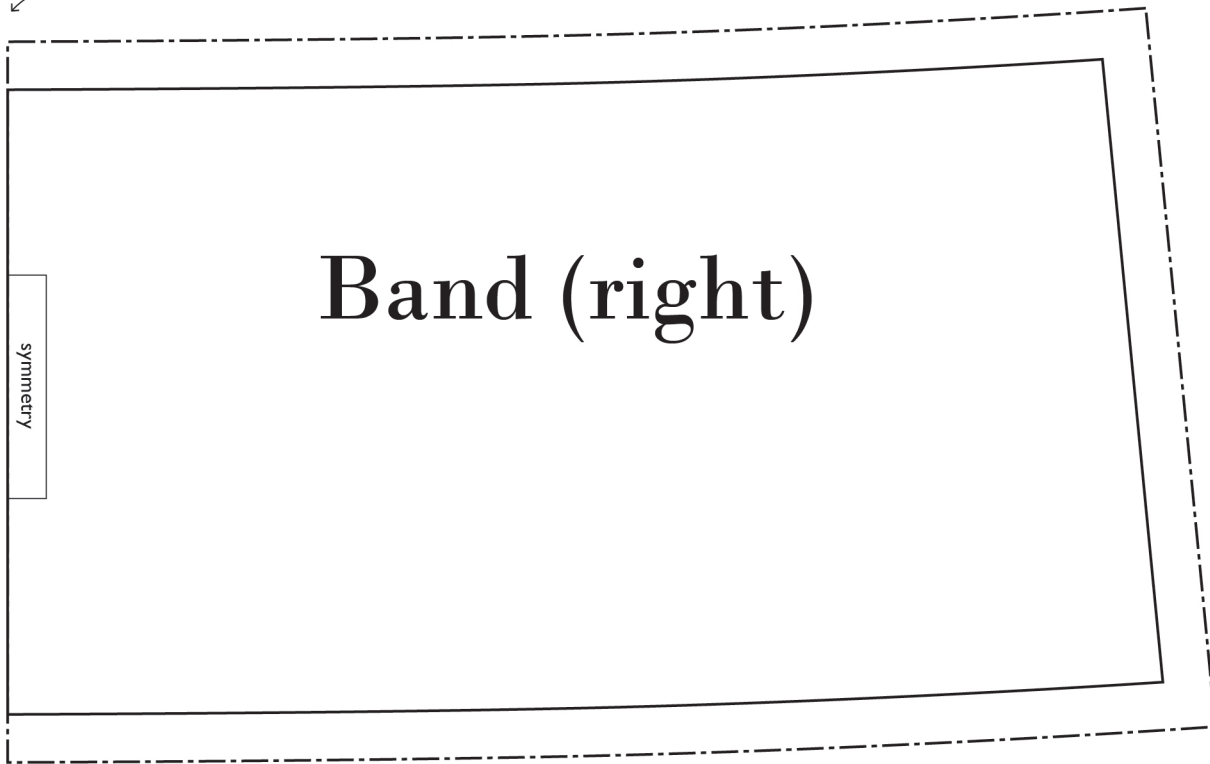


Crown

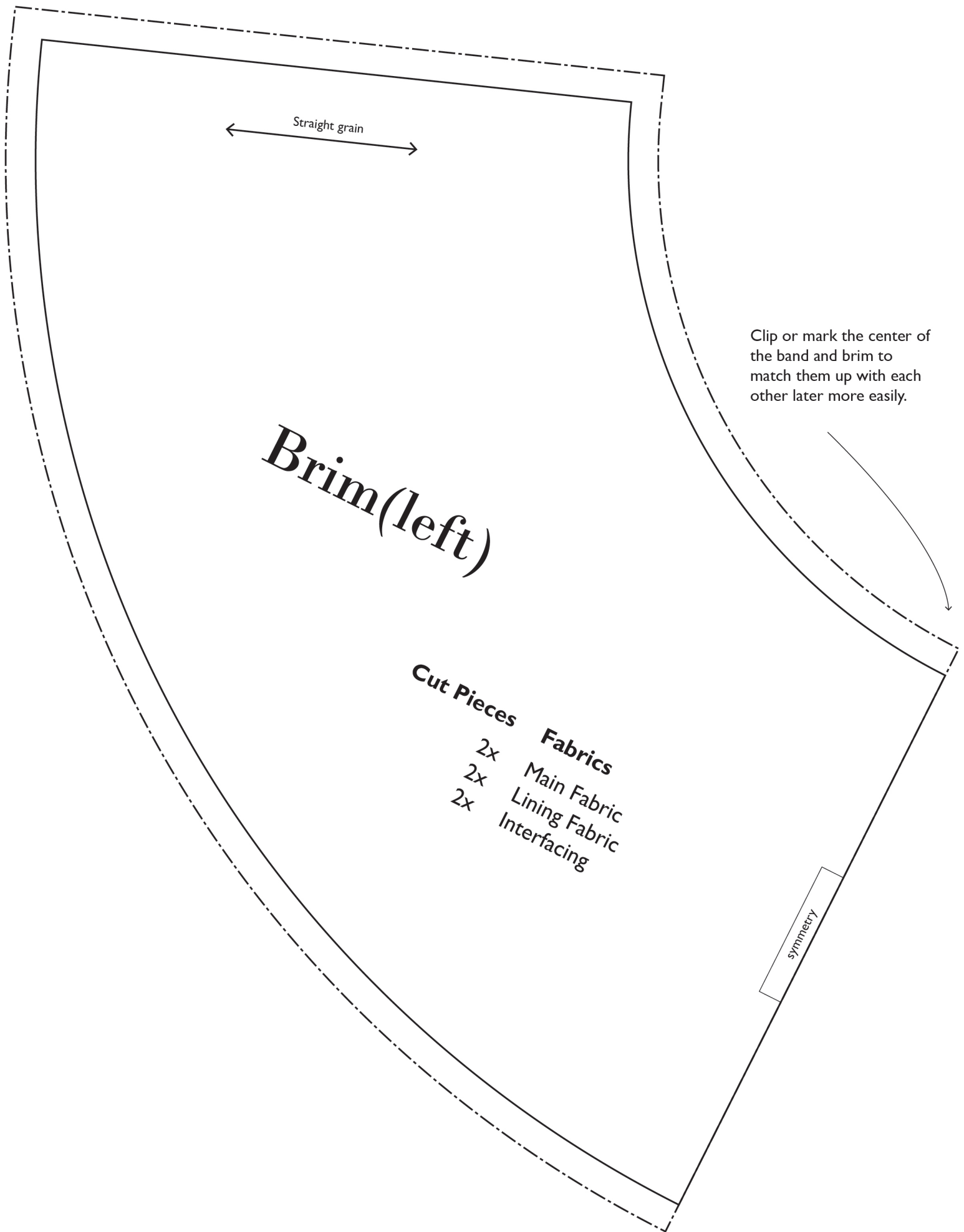
Cut Pieces	Fabrics
1x	Main Fabric
1x	Lining Fabric
1x	Interfacing



Clip or mark the center of the band and brim to match them up with each other later more easily.



Cut and tape together left and right pieces of the band and brim or cut only one side of the pattern and flip over the pattern to trace the opposite side on the fabric.



← Straight grain →

Brim(left)

Cut Pieces **Fabrics**
2x Main Fabric
2x Lining Fabric
2x Interfacing

Clip or mark the center of the band and brim to match them up with each other later more easily.

symmetry

Brim(right)

symmetry

