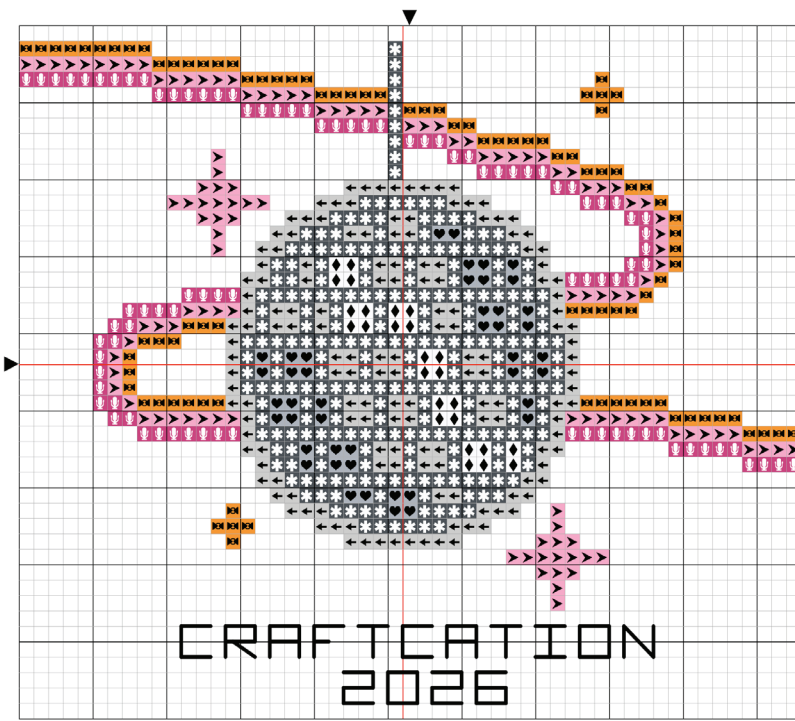


SPOT × COLORS®

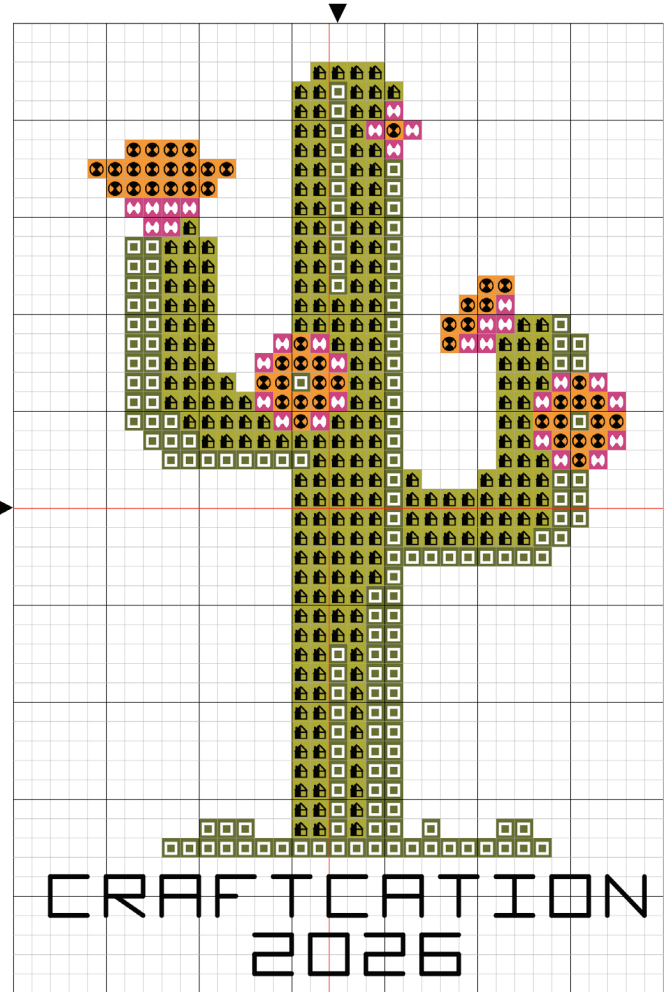
modern cross stitch + design

CRAFTY LAB - COMMEMORATIVE CRAFTCATION CROSS STITCH

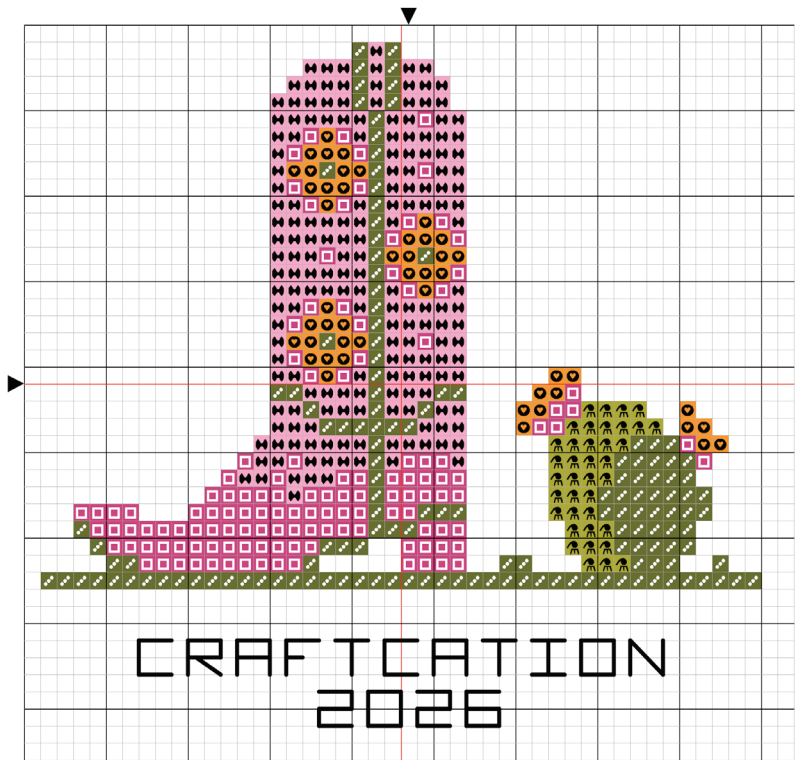
Select 1 of 3 designs to stitch.
Feel free to stitch with or without the text.



Number	Description	Str	Length
DMC 310	Black	2	9.62 in.
DMC 413	Pewter Gray - Dark	2	177.71 in.
DMC 415	Pearl Gray	2	31.15 in.
DMC 605	Cranberry - Very Light	2	85.67 in.
DMC 741	Tangerine - Medium	2	66.55 in.
DMC 3805	Cyclamen Pink	2	65.84 in.
DMC B5200	Snow White	2	18.41 in.
DMCe Blanc	DMCe Blanc	2	107.62 in.
DMC 310	B/S	2	x 55



Number	Description	Str	Length
DMC 166	Lime Green	2	169.92 in.
DMC 310	Black	2	9.62 in.
DMC 469	Avocado Green	2	106.91 in.
DMC 741	Tangerine - Medium	2	35.40 in.
DMC 3805	Cyclamen Pink	2	21.95 in.
DMC 310	B/S	2	x 55

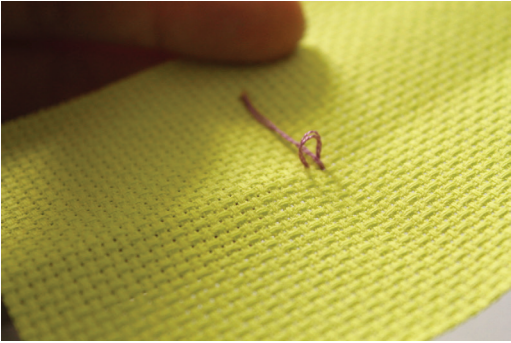
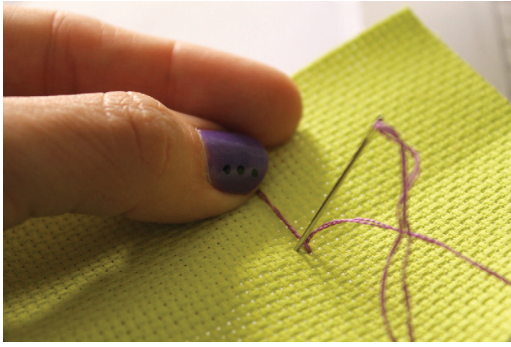


Number	Description	Str	Length
DMC 166	Lime Green	2	26.90 in.
DMC 310	Black	2	9.62 in.
DMC 469	Avocado Green	2	104.08 in.
DMC 605	Cranberry - Very Light	2	128.15 in.
DMC 741	Tangerine - Medium	2	33.98 in.
DMC 3805	Cyclamen Pink	2	92.75 in.
DMC 310	B/S	2	x 55

FINISHED PIECE FITS A 4" HOOP OR FRAME
PATTERN NOT TO SCALE

NEVER CROSS STITCHED BEFORE?
HOW TO INSTRUCTIONS CAN
BE FOUND ON OUR WEBSITE
SPOTYOURCOLORS.COM
UNDER THE "ABOUT" TAB

STARTING YOUR STITCHING



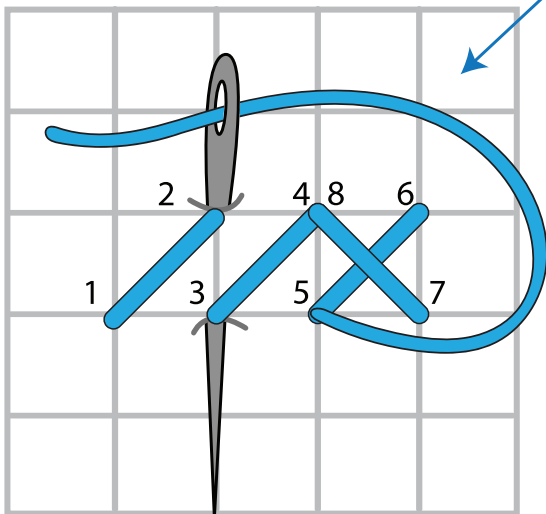
THREAD

Cut a piece of thread about 12-18 inches in length. Divide thread into 2 pieces/strands (6 provided).

FABRIC

To position design on fabric, fold fabric in half by length and again by width to find the exact center of fabric. Do the same with the pattern. Start stitching at the center point.

- ★ It is important to avoid knots on the back of the fabric. When you begin stitching, bring the threaded needle up from the back of the fabric and leave about a 1inch (2.5 cm) tail of thread behind the fabric. Hold it in place with your finger while you stitch several stitches over the tail to lock it in place. Clip off the excess thread. To end your stitching, weave your needle through the last 5 or 6 stitches on the backside of the fabric and clip off the excess thread. Make sure you end your stitching before you run the thread on the needle too low. Otherwise, it can be difficult to run the needle under the last several stitches. If you do run your thread too low, you can simply undo several stitches to allow for enough thread.
- ★ There are two cross stitch methods. The first method is to work a row of half stitches (///), then work back (\\\) to complete the X's. Use this method for most stitching. The second method is to complete each X as you go. Use this method for vertical rows of stitches. It is important that all the X's are crossed in the same direction. If they are mixed the finished piece will look uneven.
- ★ Be careful to use the same amount of tension while you stitch for an even look. Your stitches should lay flat on your fabric and not distort the holes in the fabric.
- ★ If you need to clean your needlework, do so by hand washing in cool water using a mild liquid detergent. Rinse well. Do not wring, but roll in a clean towel to absorb most of the water. While still damp, place face down on a terry towel. Place another cloth on top of the needlework and press lightly with a warm iron. Let dry.
- ★ Once the needlework has dried, it can be framed. To frame in a wooden embroidery hoop, position the piece in the hoop to your liking. Once it is secure, you can either trim off all the excess or leave a small amount to wrap over the inside frame of the hoop and secure with double sided tape or glue.



each box represents an X you are to stitch

SUPPLIES NEEDED:

- 14 count aida
- DMC threads (listed or supplied)
- needle
- scissors
- 4" embroidery hoop (optional)

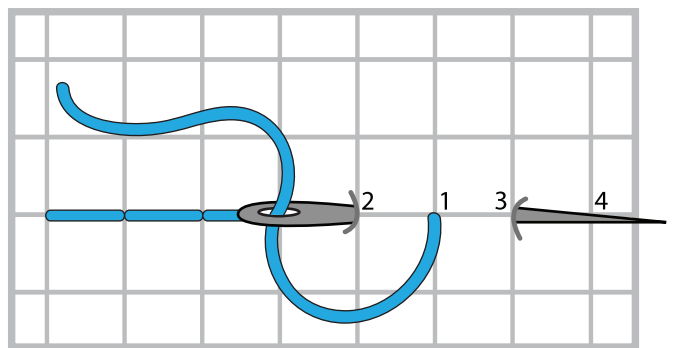
instructions are based on using 2 strands of thread (of the 6 provided)

IG spot_colors

FB spotyourcolors

For the lines (1 thread or 2, 2 used in photo):

BACK STITCH - The back stitch is worked from the right to the left. To start, bring your needle up at 1 and back down at 2. Move left and bring needle up at 3 and back down at 1. Continue the stitching sequence. A line on your design chart indicates a back stitch is needed. When there is a symbol over a square, and the symbol is the same on both sides of the backstitch symbol, make a cross stitch in that square, then add the backstitch last.



Check out our video tutorials: <https://bit.ly/3c4LtOM>