

# Mosaic Minis!

Mini Mosaic Mug

Rugs

“Wow! Without the Ow!”

~Brigitta Dau



## Pattern Notes

Learn to Mosaic knit with this super easy coaster pattern. These little cuties are knit flat, and the perfect stash-busting project. See page 2 for mosaic knitting instructions and how to read the chart. (This pattern includes written instructions as well.)

## Materials

- MC-50 yds Worsted or Aran
  - CC- 50 yds Worsted or Aran
- ~shown in~

Double stranded Cotlin by KnitPicks 70% Tanguis Cotton, 30% Linen, Beach Glass and Black.

- US 7/4.5mm straight needles
- Tapestry needle

## Finished Dimensions

4"x4"

## Gauge

24st and rows = 4 inches in Stockinette  
6 stitches = 1 inch

**Abbreviations:****CO:** Cast On**RS:** Right Side**WS:** Wrong Side**KMC:** Knit with Main Color**KCC:** Knit with Contrasting Color**SMC:** slip Main Color stitch purl-wise with yarn in back for RS row, Slip stitch purl-wise with yarn in front for WS row.**SCC:** slip Contrasting Color stitch purl-wise with yarn in back for RS row, Slip stitch purl-wise with yarn in front for WS row.**BO:** Bind Off**How to Knit Mosaic and Read the Mosaic Chart**

A mosaic pattern is simply a slip-stitch design using two colors. And you knit every row. (Yay! No purling!)

The colors are worked one at a time, so you'll only be handling one color every row. You'll be working a RS (knit) and a WS (knit) row with **one** color. After working these two rows, you'll drop that color and work a RS and a WS row with the other color.

The chart represents this: every horizontal row of squares represents a RS (right to left) **and** a WS (left to right) row.

For this chart, the first stitch of the chart determines the color you are knitting with. (i.e. row 1 you are knitting with MC, row 3 you are knitting with the CC)

When knitting with MC, all CC stitches on the chart are SLIPPED stitches. When knitting with CC, all MC stitches on the chart are SLIPPED stitches. All the stitches are slipped purl-wise, with the yarn held on the WS.

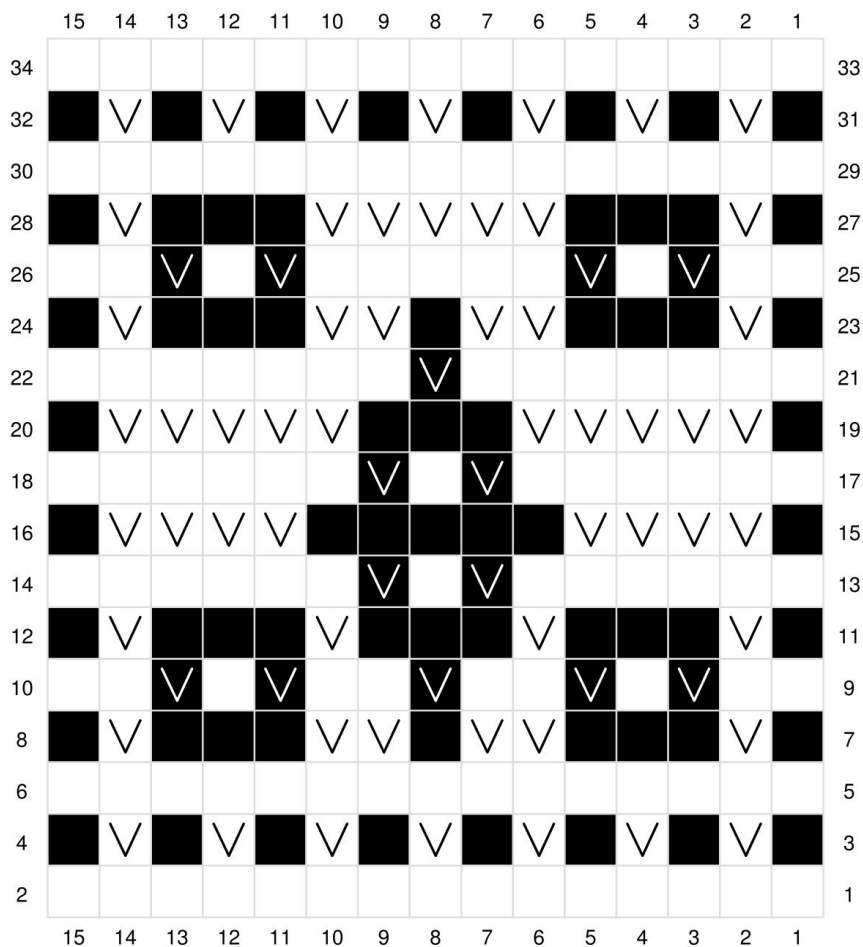
So, on a RS row you will be slipping the stitches with the working yarn in back, and on the WS rows with the working yarn in front.

# Coasters

## Chart and Key

With MC, CO 15 stitches.  
 Follow chart until end.  
 BO all stitches.  
 Weave in ends.

- Knit in Main Color (MC)
- Knit in Contrast Color (CC)
- ∇ Slip CC, yarn in back for RS, yarn in front for WS
- ∇ Slip MC, yarn in back for RS, yarn in front for WS



## Coasters

### Written Instructions

Cast on 15 stitches in Main Color

Row 1: KMC15

Row 3: KCC, SMC, KCC, SMC, KCC, SMC, KCC, SMC, KCC, SMC, KCC, SMC, KCC, SMC, KCC

Row 5: KMC15

Row 7: KCC, SMC, KCC3, SMC2, KCC, SMC2, KCC3, SMC, KCC

Row 9: KMC2, SCC, KMC, SCC, KMC2, SCC, KMC2, SCC, KMC, SCC, KMC2

Row 11: KCC, SMC, KCC3, SMC, KCC3, SMC, KCC3, SMC, KCC

Row 13: KMC6, SCC, KMC, SCC, KMC6

Row 15: KCC, SMC4, KCC5, SMC4, KCC

Row 17: KMC6, SCC, KMC, SCC, KMC6

Row 19: KCC, SMC5, KCC3, SMC5, KCC

Row 21: KMC7, SCC, KMC7

Row 23: KCC, SMC, KCC3, SMC2, KCC, SMC2, KCC3, SMC, KCC

Row 25: KMC2, SCC, KMC, SCC, KMC5, SCC, KMC, SCC, KMC2

Row 27: KCC, SMC, KCC3, SMC5, KCC3, SMC, KCC

Row 29: KMC15

Row 31: KCC, SMC, KCC, SMC, KCC, SMC, KCC, SMC, KCC, SMC, KCC, SMC, KCC, SMC, KCC

Row 33: KMC15

(Ending after WS row is complete), Bind off and weave in ends

 Support your local yarn store

 Follow me on IG: @Brigittadaucoaching @Brigitta.YarnPigCrafts

[brigittadau@Brigittadau.com](mailto:brigittadau@Brigittadau.com)

