

Mosaic Minis Craftcation!

Mini Mosaic Mug Rugs “Wow! Without the Ow!” ~Brigitta Dau



Pattern Notes

Learn to Mosaic knit with this super easy coaster pattern. These little cuties are knit flat, and the perfect stash-busting project. See page 2 for mosaic knitting instructions and how to read the chart. (This pattern includes written instructions as well.)

Materials

- MC-50 yds Worsted or Aran
 - CC- 50 yds Worsted or Aran
- ~shown in~

Double stranded 24/7 Cotton DK by Lion Brand in Tamarin & Calypso

- US 7/4.5mm straight needles (or correct size to knit gauge)
- Tapestry needle

Finished Dimensions

4"x4"

Gauge

24st and rows = 4 inches in Stockinette
6 stitches = 1 inch

How to Knit Mosaic and Read the Mosaic Chart

A mosaic pattern is simply a slip-stitch design using two colors. And you knit every row. (Yay! No purling!)

The colors are worked one at a time, so you'll only be handling one color every row. You'll be working a RS (knit) and a WS (knit) row with one color. After working these two rows, you'll drop that color and work a RS and a WS row with the other color.

The chart represents this: every horizontal row of squares represents a RS (right to left) and a WS (left to right) row.

For this chart, the first stitch of the chart determines the color you are knitting with. (i.e. row 1 you are knitting with MC, row 3 you are knitting with the CC)

When knitting with MC, all CC stitches on the chart are SLIPPED stitches. When knitting with CC, all MC stitches on the chart are SLIPPED stitches.

All the stitches are slipped purl-wise, with the yarn held on the WS.

So, on a RS row you will be slipping the stitches with the working yarn in

Abbreviations:

CO: Cast On

RS: Right Side

WS: Wrong Side

KMC: Knit with Main Color

KCC: Knit with Contrasting Color

SMC: slip Main Color stitch purl-wise with yarn in back for RS row, Slip stitch purl-wise with yarn in front for WS row.

SCC: slip Contrasting Color stitch purl-wise with yarn in back for RS row, Slip stitch purl-wise with yarn in front for WS row.





BO: Bind Off

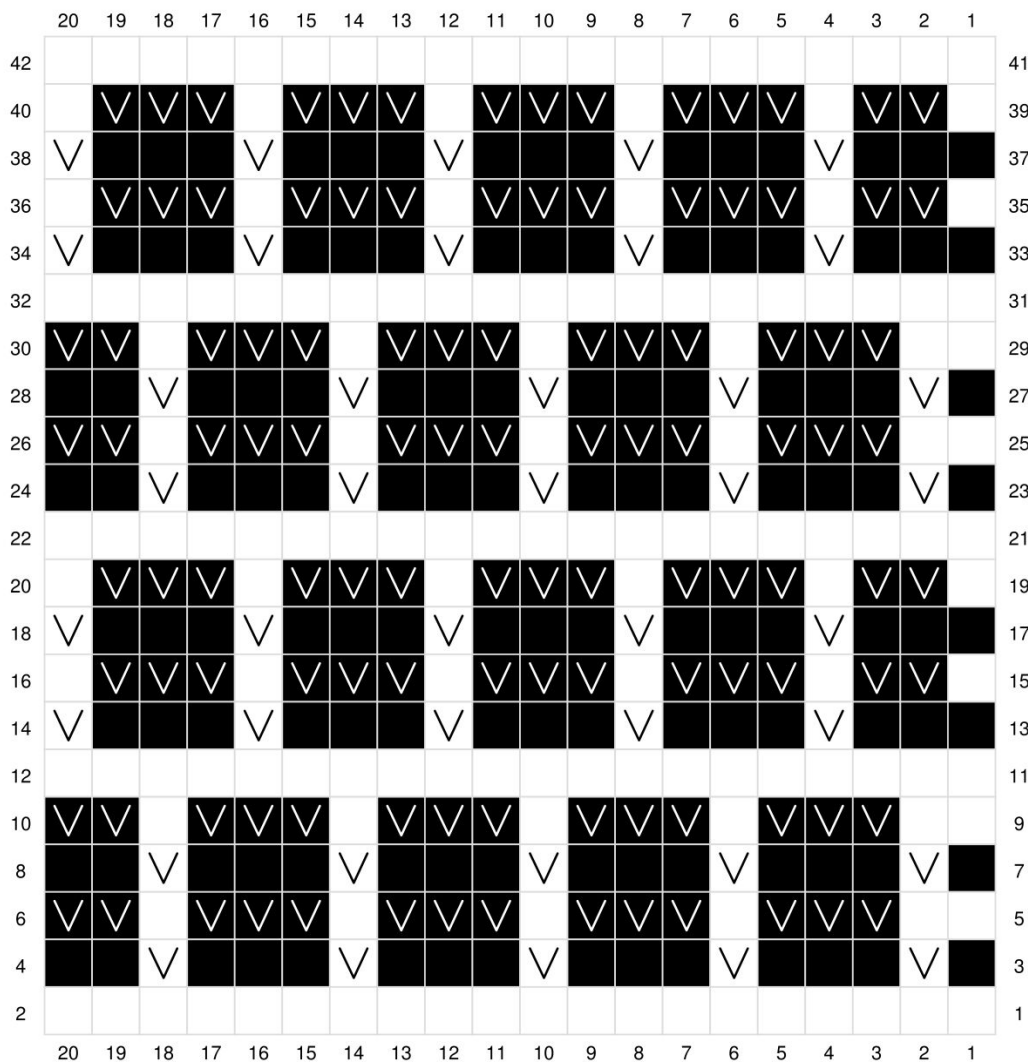
back, and on the WS rows with the working yarn in front.

Mosaic Coaster Craftcation (Basket Weave)

Chart and legend

With MC, CO 20 stitches.
 Follow chart until end.
 BO all stitches.
 Weave in ends.

-  Knit Main Color (MC)
-  Knit Contrasting Color (CC)
-  slip MC with Yarn in back RS, Yarn in front WS
-  slipCC with Yarn in back RS, Yarn in front WS



Written Instructions:

With MC, Cast On 20 stitches

Row 1: KMC20

Row 3: KCC, SMC, KCC3, SMC, KCC3, SMC, KCC3, SMC, KCC3, SMC, KCC2

Row 5: KMC2, SCC3, KMC, SCC3, KMC, SCC3, KMC, SCC3, KMC, SCC2

Row 7: KCC, SMC, KCC3, SMC, KCC3, SMC, KCC3, SMC, KCC3, SMC, KCC2

Row 9: KMC2, SCC3, KMC, SCC3, KMC, SCC3, KMC, SCC3, KMC, SCC2

Row 11: KMC20

Row 13: KCC3, SMC, KCC3, SMC, KCC3, SMC, KCC3, SMC, KCC3, SMC

Row 15: KMC, SCC2, KMC, SCC3, KMC, SCC3, KMC, SCC3, KMC, SCC3, KMC

Row 17: KCC3, SMC, KCC3, SMC, KCC3, SMC, KCC3, SMC, KCC3, SMC

Row 19: KMC, SCC2, KMC, SCC3, KMC, SCC3, KMC, SCC3, KMC, SCC3, KMC

Row 21: KMC20

Row 23: KCC, SMC, KCC3, SMC, KCC3, SMC, KCC3, SMC, KCC3, SMC, KCC2

Row 25: KMC2, SCC3, KMC, SCC3, KMC, SCC3, KMC, SCC3, KMC, SCC2

Row 27: KCC, SMC, KCC3, SMC, KCC3, SMC, KCC3, SMC, KCC3, SMC, KCC2

Row 29: KMC2, SCC3, KMC, SCC3, KMC, SCC3, KMC, SCC3, KMC, SCC2

Row 31: KMC20

Row 33: KCC3, SMC, KCC3, SMC, KCC3, SMC, KCC3, SMC, KCC3, SMC

Row 35: KMC, SCC2, KMC, SCC3, KMC, SCC3, KMC, SCC3, KMC, SCC3, KMC

Row 37: KCC3, SMC, KCC3, SMC, KCC3, SMC, KCC3, SMC, KCC3, SMC

Row 39: KMC, SCC2, KMC, SCC3, KMC, SCC3, KMC, SCC3, KMC, SCC3, KMC

Row 41: KMC20

BO all stitches and Weave in ends.

📍 Support your local yarn store

🧶 Follow me on IG: @Brigittadaucoaching @Brigitta.YarnPigCrafts
brigittadau@Brigittadau.com

