

CELL

CENTER OF EXCELLENCE IN
LEADERSHIP OF LEARNING

UNIVERSITY OF INDIANAPOLIS

THE NEW INDIANA DIPLOMA & COURSE SCHEDULING FLEXIBILITY

Presenters:

Rebekah Frazer

Assistant Director of Career Coaching & Academic Advising
Indiana Department of Education

**INDIANA EARLY
COLLEGE SUMMIT**

The New Indiana Diplomas: Taking Concept to Reality

June 3, 2026

ABOUT US



INDIANA
DEPARTMENT *of*
EDUCATION

Rebekah Frazer, M.S. LHMC Eligible

Assistant Director of Career Coaching & Academic Advising IDOE

Former school counselor and director, private practice mental health counselor, juvenile justice, group home mental health caseworker. ASCA member, ISCA Board Member and Communications Chair.



AGENDA

- **Review New Diploma Requirements**
- **Walk through Example Enrollment Honors Plus Student Path**
- **Common Scheduling Questions**
- **Resources for the New Diploma**
- **Q/A time**

THE HIGH SCHOOL EXPERIENCE OF THE *FUTURE*

OUR SHARED GOAL: The high school experience prepares every student for success, helping them to maximize their educational attainment, regardless of their unique goals and aspirations for the future.



Enrollment



Employment



Enlistment & Service



FINAL DIPLOMA RULE

The final rule maintains:

- **One base diploma**
 - Minimum, flexible requirements for all students
- Opportunities for students to earn **readiness seals**
 - Aligned with their unique path

*Note: The federally-required **alternate diploma** for students in special education with a significant cognitive disability is still available.*





THE NEW INDIANA DIPLOMA: ELIGIBLE COURSES FOR SY 25-26

The new Indiana diploma, effective for all students beginning with the class of 2029, includes a base (minimum requirements) for every student, plus the opportunity to earn readiness seals aligned with their unique path. Students are encouraged to seize this flexibility by personalizing their high school experience. The new seals provide additional intentionality to maximize readiness and are designed to be permeable, allowing students to update their graduation plan and pivot, if their original interests and goals change. Students who do not earn a seal must still complete components 2 and 3 of Graduation Pathways.

REQUIRED CREDITS

FLEXIBLE CREDITS

	REQUIRED CREDITS	FLEXIBLE CREDITS
ENGLISH	8 CREDITS <ul style="list-style-type: none"> 2 credits: English 9 	<ul style="list-style-type: none"> 1 credit: Communications-focused course <ul style="list-style-type: none"> Ex. Speech, Journalism, Visual Communication, etc. 5 additional English credits <ul style="list-style-type: none"> Ex: English 10-12, American Literature, World Literature, Expository Writing, etc.
MATH	7 CREDITS <ul style="list-style-type: none"> 2 credits: Algebra I 1 credit: Personal Finance 	<ul style="list-style-type: none"> 4 additional math credits <ul style="list-style-type: none"> Ex. Geometry, Algebra II, Pre-Calculus, Probability and Statistics, Business Math, etc.
SCIENCE, TECHNOLOGY, AND ENGINEERING	7 CREDITS <ul style="list-style-type: none"> 2 credits: Biology I 1 credit: Computer Science 	<ul style="list-style-type: none"> 2 additional science credits <ul style="list-style-type: none"> Ex. Biology II, Chemistry I, Physics I, etc. 2 STEM-focused credits <ul style="list-style-type: none"> Ex. Plant and Soil Science, Principles of Engineering, Software Development, etc.
SOCIAL STUDIES	5 CREDITS <ul style="list-style-type: none"> 2 credits: U.S. History 1 credit: U.S. Government 	<ul style="list-style-type: none"> 2 credits: World Perspectives <ul style="list-style-type: none"> Ex. Geography and History of the World, AP World History, French III, etc.
PE/HEALTH	2 CREDITS <ul style="list-style-type: none"> 1 credit: Physical Education 1 credit: Health & Wellness 	
PERSONALIZED ELECTIVES	12 CREDITS	Students are encouraged to utilize the new readiness-seals to align these personalized electives with their unique goals. Personalized electives can include a variety of courses, such as Career and Technical Education (CTE), Performing or Fine Arts, and World Languages.
COLLEGE & CAREERS	1 CREDIT <ul style="list-style-type: none"> 1 credit: Preparing for College & Careers 	Preparing for College and Careers can be offered in middle school to provide additional flexibility in a student's high school schedule.

A complete list of eligible courses for the 25-26 school year is can be found [here](#).

Note: The federally-required alternate diploma for students in special education with a significant cognitive disability is still available.



INDIANA DEPARTMENT OF EDUCATION

BLUEPRINT FOR SUCCESS: READINESS-SEALS

Readiness seals are designed to be permeable, allowing students to update their graduation plan and pivot, if their original interests and goals change. Although seals are optional, students are encouraged to utilize the blueprints below to focus their flexible credits into a connected pathway that aligns with their future goals. Students may earn one or multiple seals. Graduation Pathways requirements will be satisfied through completion of any seal.



ENROLLMENT



EMPLOYMENT



ENLISTMENT & SERVICE



HONORS SEAL

- Complete at least 4 World Language and 6 Social Studies credits
- Complete at least 8 Math credits
 - Algebra I plus Geometry, Algebra II, and Pre-Calculus or any advanced math credits aligned to their course of study
- Complete at least 6 Science credits
 - Biology I plus Chemistry or Physics or any advanced lab sciences credits aligned to their course of study
- Earn a C or higher in all courses and earn a cumulative B average
- Complete one of the following:
 - Earn 4 credits in AP, IB, or Cambridge courses and take corresponding exams
 - Earn 6 college credits
 - Score a 1050 on the SAT or a 26 on the ACT
 - Earn two of the following:
 - At least 3 college credits
 - 2 credits in AP courses and take corresponding exams
 - 2 credits in IB courses and take corresponding exams
 - 2 credits in Cambridge courses and take corresponding exams

- Complete one of the following:
 - A market-driven credential of value aligned to a specific occupation
 - 3 courses in a Career and Technology Education (CTE) pathway
 - An approved career preparation experience aligned to Indiana's CSA program, or
 - An approved, locally-created pathway
- Complete 150 hours of work-based learning (may include multiple experiences that are paid, unpaid, on-site, or simulated)
- Demonstrate skill development in Communication, Collaboration, and Work Ethic
- Meet attendance goal:
 - At least 1 school year with no more than 3 days of unexcused absences
 - At least 150 hours of work-based learning experience with no more than 3 unexcused absences.

- Complete one of the following:
 - Introduction to Public Service course or approved locally-created equivalent
 - Emphasis on developing an awareness of the physical standards and character required for service
 - One year of ROTC or Civil Air Patrol in high school
- Achieve a score of 21 on the ASVAB and complete one of the following:
 - All three components of the Career Exploration Program
 - A career exploration tool approved by IDEE
- Meet attendance goal:
 - At least 1 school year with no more than 3 days of unexcused absences
- Demonstrate skill development in Communication, Collaboration, and Work Ethic:
 - Externally verified through a mentorship experience with current military personnel, veterans, or other public safety professionals



HONORS PLUS SEAL

- Earn the Honors Enrollment Seal, plus:
- Earn a credential of value that may include, for example:
 - Associate degree
 - Technical Certificate
 - Indiana College Care
 - AP Scholar with Distinction
 - Cambridge AICE Diploma or
 - IB Diploma
 - Complete at least 75 hours of work-based learning (may include multiple experiences that are paid, unpaid, on-site, or simulated)
 - Demonstrate skill development in the following areas: Communication, Collaboration, and Work Ethic

- Earn the Honors Employment Seal, plus:
- Earn a market-driven credential of value that may include, for example:
 - Associate degree
 - Technical Certificate
 - Indiana College Care or
 - Advanced Industry Certificate
 - Complete additional work-based learning (total of 850 hours in one or more experiences) that may include, for example:
 - Pre-Apprenticeship
 - Indiana Youth Apprenticeship
 - Demonstrate skill development in Communication, Collaboration, Work Ethic, and any additional skills determined locally

- Earn the Honors Enlistment Seal, plus:
- Complete one of the following:
 - Achieve a score of 50 or higher on the ASVAB
 - Enlistment in ROTC at the collegiate level
 - Acceptance to a service academy
 - Demonstrate excellence in leadership through one of the following:
 - Completion of at least 100 hours of public service
 - Holding a leadership role in a co/extra-curricular activity
 - Completion of two seasons of a team-based physical sport or activity

in.gov/ed

A PURPOSEFUL PATHWAY FOR EVERY STUDENT

COMPONENTS OF A QUALITY STUDENT PATHWAY

**Personalized Career Coaching
& Academic Advising**

**Custom Course Sequence &
Educational Experiences**

**Industry-Specific
Experiential/WBL Experience**

**Industry/Postsecondary
Credential of Value**

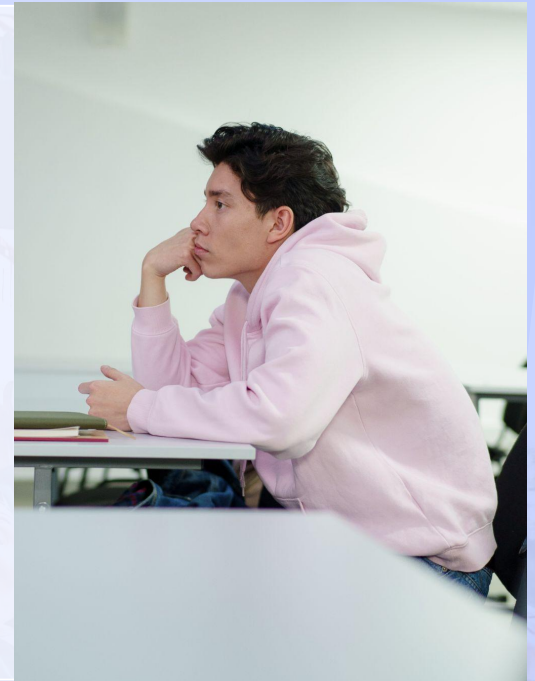
A PURPOSEFUL PATHWAY FOR EVERY STUDENT

Tyler

- Age 17
- Junior in high school

Pursuing:

- Law & Public Administration Magnet/Pathway
- Enrollment Honors Plus Seal





A PURPOSEFUL PATHWAY FOR EVERY STUDENT

COMPONENTS OF A QUALITY STUDENT PATHWAY

**Personalized Career Coaching
& Academic Advising**

A PURPOSEFUL PATHWAY FOR EVERY STUDENT

Personalized Career Coaching & Academic Advising

- Indiana has a robust ecosystem to support personalized college and career coaching including student graduation plans, a statewide career exploration platform, and more.
- State investments in intermediaries and career coaching programs through grants from the Commission for Higher Education have enhanced capacity.

How can communities and schools support?

- Securing industry mentors
- Mapping multiple pathways within a cluster
- Implementing career coaching framework
- Industry-related financial counseling

A PURPOSEFUL PATHWAY FOR EVERY STUDENT

Personalized Career Coaching & Academic Advising

College and law school visits to connect students to education requirements.

- Ensure students understand the educational requirements .
- Begin financial counseling and conversations about completing undergraduate and law school.



A PURPOSEFUL PATHWAY FOR EVERY STUDENT

Personalized Career Coaching & Academic Advising

Authentic interactions with industry professionals.

- During his junior year, Tyler and his classmates followed three cases from the same judge.
- The group met with the judge at the end of each trial to discuss court proceedings and other legal principles at play.



A PURPOSEFUL PATHWAY FOR EVERY STUDENT

COMPONENTS OF A QUALITY STUDENT PATHWAY

**Personalized Career Coaching
& Academic Advising**

**Custom Course Sequence &
Educational Experiences**

A MORE CUSTOMIZABLE APPROACH TO LEARNING

Custom Course Sequence & Educational Experiences

- Math and ELA courses can be tailored to the student's goals, meaning schools having the opportunity to integrate industry-specific concepts while maintaining academic rigor.
- Employers can collaborate with schools to shape coursework that strengthens workforce readiness.

Examples:

- **Advanced Manufacturing Math** – Algebra-based problem-solving in production, logistics, and engineering.
- **Technical Communication in Business** – Writing and communication skills aligned with professional settings and needs.

A MORE CUSTOMIZABLE APPROACH TO LEARNING

Custom Course Sequence & Educational Experiences

- **"Credit" means demonstrating proficiency against academic standards in a course, learning activity, or experience meeting the following requirements:**
 - (1) Aligns with a department approved course description.
 - (2) (If applicable) The course is consistent with Indiana academic standards.
 - (3) (If applicable) The required proficiency is equal to or greater than that needed to pass the assessment.
- Schools are encouraged to create multiple opportunities for students to earn a credit including competency-based approaches, through work-based learning, and traditional experiences.

Credits are earned through demonstrations of learning, NOT the passing of time.

A MORE CUSTOMIZABLE APPROACH TO LEARNING

Custom Course Sequence & Educational Experiences



- **Legal Writing/English Comp (ELA)** – Text-based course focusing on legal texts and technical writing. Offered for dual credit towards ICC and Paralegal AS degree.
- **US History & the Supreme Court (US History)** – Intentionally coordinated course to meet US history requirements through landmark Supreme Court Cases.
- **Indiana College Core (Multiple)** - Complete all ICC requirements to meet multiple directed credit requirements.
- **WBL & ELA Credit (ELA)** - WBL placements for law magnet students incorporate a writing portfolio that is evaluated by an ELA teacher for 1 credit.



A PURPOSEFUL PATHWAY FOR EVERY STUDENT

COMPONENTS OF A QUALITY STUDENT PATHWAY

**Personalized Career Coaching
& Academic Advising**

**Custom Course Sequence &
Educational Experiences**

**Industry-Specific
Experiential/WBL Experience**

A MORE CUSTOMIZABLE APPROACH TO LEARNING

Industry-Specific Experiential/WBL Experience

- Menu of WBL Options
- All seals can be met with up to 3 placements that are at least 25 hours each.

Examples:

- **Creek Cattle Company** – Fully student operated school-based enterprise that provides farm-to-table meat to the school and larger community at Indian Creek High School, Trafalgar, IN.
- **Career Boost @ Eastern Indiana Works** – Regional workforce board securing modern youth apprenticeship opportunities for students with placements in regional in-demand sectors.

A MORE CUSTOMIZABLE APPROACH TO LEARNING

Industry-Specific Experiential/WBL Experience

- All CTE WBL will count towards the diploma seals.
- Not all diploma seal WBL will count for CTE.

Some differences...

- **Sustained Interaction** – Diploma seals allow for three placements, no fewer than 25 hours. CTE requires a single placement for an entire 75 hour block.
- **Pathway Alignment** – Diploma seals DO NOT require WBL to be aligned to the student's pathway. CTE WBL requires a student to complete WBL within their pathway to count.
- **Reporting** - IDOE has shared guidance on tracking and reporting WBL experiences outside of CTE in the Menu of Work-Based Learning Guide.

A MORE CUSTOMIZABLE APPROACH TO LEARNING

Industry-Specific Experiential/WBL Experience

Work-based learning (WBL) is defined as **sustained interaction** between participants and **industry professionals** in **real or simulated workplace settings**. These experiences foster **authentic work experience** and develop knowledge, skills, and competencies. Experiences support participants in career exploration and readiness and are intentionally **aligned and evaluated with course and training competencies**.

WBL requires a written **partnership agreement and plan** between the participant, parent or guardian, school, and employer partner.

A MORE CUSTOMIZABLE APPROACH TO LEARNING

Industry-Specific Experiential/WBL Experience

School-Based Enterprise

Workplace Simulation

Micro-Internship

Technical (CTE) Internship

Academic Internship

Industry-Developed Challenge

Student Entrepreneurial Experience

Modern Youth or Pre-Apprenticeship

A MORE CUSTOMIZABLE APPROACH TO LEARNING

Industry-Specific Experiential/WBL Experience



- Internship opportunities with local judges, government offices, and law firms (both remote and in-person)
- School schedule allows flexibility senior year for full-day placements multiple times a week.

Law & Public Administration Pathway:

- **Senior Year Legal Internship** – Works with local law firm two days/week during one semester in senior year (90+ hrs).
- Attends public meetings, reviews documents, files motions.

A PURPOSEFUL PATHWAY FOR EVERY STUDENT

COMPONENTS OF A QUALITY STUDENT PATHWAY

**Personalized Career Coaching
& Academic Advising**

**Custom Course Sequence &
Educational Experiences**

**Industry-Specific
Experiential/WBL Experience**

**Industry/Postsecondary
Credential of Value**

A MORE CUSTOMIZABLE APPROACH TO LEARNING

Industry/Postsecondary Credential of Value

- Indiana is #1 in the country with 65%+ students completing high school with some college credit.
- Only 5% of high school graduates complete a credential prior to graduation.

Examples:

- **Indiana College Core** – Postsecondary credential consisting of 30 college credits w. Guaranteed articulation to state and many private colleges and universities in Indiana.
- **Technical Certificates** – Stackable postsecondary certificates aligned to career-ready knowledge and skills, preparing students to directly enter the workforce or continue their education.
- **Industry Recognized Credentials of Value** - Job-ready credential that is sought after by employers and sets students up for a career within an industry.

A MORE CUSTOMIZABLE APPROACH TO LEARNING

Industry/Postsecondary Credential of Value

Enrollment Honors Plus Seal

Pursuant to 511 Indiana Administrative Code (IAC) 6-7-2-21(b)(2), the following options will satisfy the credential requirement for the enrollment honors plus seal:

- An academic credential that includes at least 30 college credit hours and has a score of 3.0 or higher on the state's credential of value list
- Earning the Indiana College Core
- Earning the AP Scholar with Distinction
- Completing the requirements for the International Baccalaureate Diploma Programme
- Completing the requirements for the Cambridge AICE Diploma

See the following list of all credentials that qualify for the [enrollment honors plus](#).

All seven of Indiana's public colleges and universities and an increasing number of private institutions have guaranteed automatic acceptance for any student who applies and has successfully earned the enrollment honors plus seal.

Employment Honors Seal

Pursuant to 511 6-7-2-21(b)(3), the following options will satisfy the credential option for the employment honors seal:

- One postsecondary credential or industry certification with a score of 3.0 or higher on the state's credential of value list
- OR
- Two postsecondary credentials or industry certifications each with a score of 2.0 or higher on the state's credential of value list, if the credentials are in the same career cluster

For example, a student interested in healthcare doing the Pre-Nursing Healthcare Specialist program of study could meet the requirement by earning both the Certified Nursing Assistant (score of 2.3) and Certified Medical Assistant (score of 2.3) certifications.

See the following list of all credentials that qualify for the [employment honors seal](#).

To enhance permeability between the seal options and recognize the value of increased educational attainment while we continue to gather employer feedback, students will also qualify for the employment honors seal if they earn:

- An industry certification with a score of 2.0 or higher on the state's credential of value list
- AND ONE OF THE FOLLOWING
- Earn the Indiana College Core
 - Earn the AP Scholar with Distinction
 - Complete the requirements for the International Baccalaureate Diploma Programme
 - Complete the requirements for the Cambridge AICE Diploma
 - Complete an apprenticeship and pre-apprenticeship credential on DWD's promoted industry certification [list](#) (last tab)

Credential of Value Methodology

- Sets expectations for Each Honors Seal
- Students can earn a single qualifying credential or stack credentials within a cluster
- Includes postsecondary credentials with industry recognized credentials

This list is provided for early adopters - IDOE is collecting feedback on this initial proposal to strengthen policy for % 2029

A MORE CUSTOMIZABLE APPROACH TO LEARNING

Industry/Postsecondary Credential of Value



Pathway Certificates:

- Paralegal Studies (18-Credit Short-Term Cert)
- Paralegal Studies (30-Credit Technical Cert)

Pathway Degrees:

Postsecondary Pathway

Legal Studies Associate
of Science (AS)

Workforce-Ready Pathway

Paralegal Associate of
Applied Science (AAS)

Indiana's Readiness Seals: Providing Students A Direct Path To Their Future

Indiana students and their families must have an education that is personalized to their individual needs and relevant in today's world. Indiana's new high school diploma requirements were strategically designed to better connect students with their unique path ahead, whether they plan to continue their education after high school, go straight into a career, or serve in our Nation's military.

With the increased flexibility in the diploma, new readiness seals provide students and parents with a blueprint for success to achieve their unique goals and aspirations. To ensure the readiness seals have currency and are as valuable as possible for students, Indiana leaders continue to collaborate with stakeholders across the state to provide students a direct path to their future upon completion of a seal. Students may earn one or multiple seals.



ENROLLMENT HONORS PLUS

Designed for students who plan to continue their education after high school

Key Partners:
Indiana colleges and universities

Guaranteed Currency:

All seven of our state's public colleges and universities are guaranteeing *automatic acceptance* into their school for any student who applies and has successfully earned this seal. This includes:

- Ball State University
- Indiana State University
- Indiana University
- Ivy Tech Community College
- Purdue University
- University of Southern Indiana
- Vincennes University

A growing number of satellite campuses, as well as private colleges and universities have also expressed interest.



EMPLOYMENT HONORS PLUS

Designed for students who plan to go straight into a career

Key Partners:
Ascend Indiana
Indiana Chamber of Commerce
Business representatives across multiple industries

Guaranteed Currency:

Through the help of Ascend Indiana, students who earn this seal can receive *dedicated career support*. This includes helping students get connected through interviews with and potentially being hired by some of our state's top employers, such as:

- Community Health Network,
- CFA Staffing,
- Cummins,
- Eli Lilly and Company,
- Parkview Health and
- Roche Diagnostics

Students who interview and have completed either the Employment Honors or Honors Plus Seal will also be eligible for direct entry into the **Central Midwest Carpenters Union** apprenticeship.

State leaders are also actively working with **Operating Engineers Local 150** to offer similar benefits in connection with their apprenticeship.



ENLISTMENT & SERVICE HONORS PLUS

Designed for students who plan to serve their community, state, or Nation

Key Partners:
Indiana National Guard
Representatives from each military branch
Public safety officials

Guaranteed Currency:

Any student who completes this seal will be uniquely qualified to join the Indiana National Guard and other military branches.

Once accepted to the Indiana National Guard, students can:

- Earn college credits for completing training and reduce the time and cost required to complete a degree
- Gain direct access to veteran mentors, and military career counselors who can provide college and career guidance
- Access priority job placement programs designed for military professionals, offering job interviews for federal employment and private-sector roles where military experience is highly valued

As implementation of the new diploma continues, this list of partners will grow to ensure Hoosier students have a more seamless path to their future.

Revised April 2, 2025



SCAN
HERE!

A PURPOSEFUL PATHWAY FOR EVERY STUDENT

COMPONENTS OF A QUALITY STUDENT PATHWAY

Personalized Career Coaching & Academic Advising

- College visits w. financial advising
- Structured mentorship w. Industry professionals

Industry-Specific Experiential/WBL Experience

- Full-day internships w. employers in the field
- Virtual/remote partnerships expand opportunities beyond local community

Custom Course Sequence & Educational Experiences

- Customized ELA & Social Studies Courses
- Competency-Based Credit for WBL

Industry/Postsecondary Credential of Value

- Stackable workforce & postsecondary credentials
- Industry Certifications & Degrees



COMMON SCHEDULING FLEXIBILITY QUESTIONS

Q- Can we co-seat classes (teach content for two courses at the same time?)

A- Yes, for example Personal Finance and Economics - students must be scheduled in both courses in the SIS, standards for both courses MUST be covered.

Q- Can students earn credit for WBL for the seal for a part-time job, volunteer hours, etc.?

A- Yes, schools may utilize WBL Level 1 (0543) to record WBL, and 1 credit can be awarded for 75 hours. Students may have up to 3 different experiences with a minimum of 25 hours each.



COMMON SCHEDULING FLEXIBILITY QUESTIONS

Q- Can we award credit by proficiency? Example Native Language Speaker or student has taken advanced content?

A- Yes. Schools can award credit by demonstration of standards which could include by examination (end of semester test), or other methods of evaluation of mastery of standards.

Q- Is there a limit on high school courses being offered/earned at the middle school level? (example PE)

A- No, but middle school standards and high school standards for the course must be met. (ex PE 8 and PE I standards) Students must also be enrolled in the corresponding high school course code and the course be linked/taught by appropriately licensed instructors.



NEW DIPLOMA IMPLEMENTATION RESOURCES & SUPPORTS

- **Eligible course titles and descriptions, by category**
- e.g. American Literature for English; Life Science for Science
 - [Memo: New Indiana Diploma Courses Eligibility](#)
 - [2025-2026 Course Companion Document](#)
 - [Memo: Split Option Training - Enlistment Seal Option](#)
 - [Memo: Demonstration of Skill Development in Communication, Collaboration, and Work Ethic](#)
- **Comprehensive work-based learning guidance, including a **landscape analysis****
 - [Current Graduation Pathways Guidance](#)
 - [Work-Based Learning Menu of Experiences](#)
- **Credential of Value [memo](#) from CHE from June 2026**
- **Interactive advising tool** to support local implementation; Priority list of vendors anticipated in Fall 2026.
 - Will engage parents, students, principals, and school counselors to design a tool that increases transparency around pathway options and helps map progress
- **Rulemaking on [new accountability model](#)** aligned to diplomas; second draft public comment closed November 17th, 2025.
 - [Indiana Accountability Model for Families and Students](#)

RULEMAKING TIMELINE & NEXT STEPS

Timing	Action Item
Now- 2027-2028 School Year	Schools can opt in to award the new Indiana diploma. <i>**students must earn a seal for opt-in</i>
2028-2029 School Year	Per statute, new diploma is effective for all graduating seniors.

THANK YOU!

Contact us for more information or questions at:

**Office of Innovation
/Student, School, and Family
Engagement -
engagement@doe.in.gov
Innovation Team/Student, School and
Family Engagement**

<https://www.in.gov/doe/diplomas/>

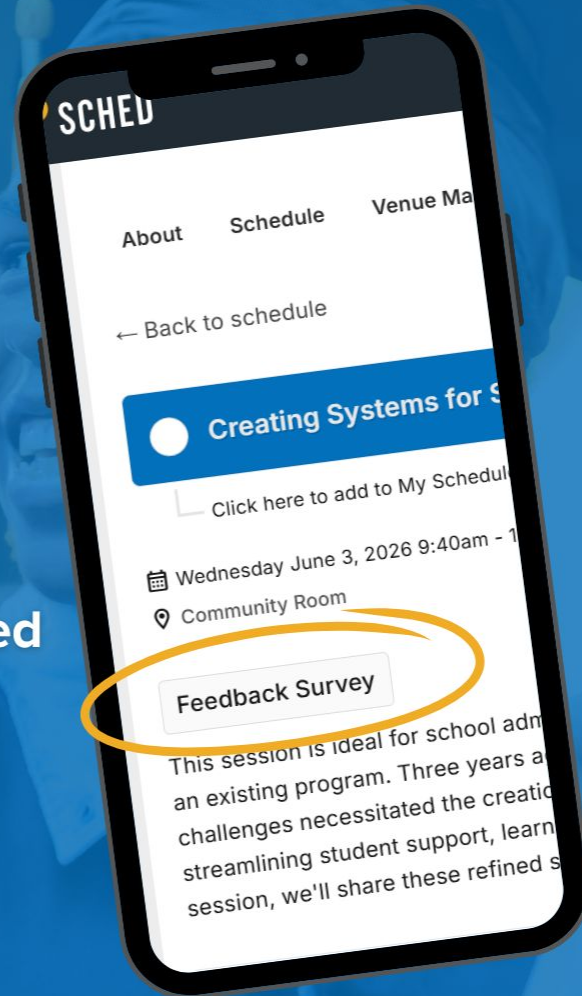
CELL

CENTER OF EXCELLENCE IN
LEADERSHIP OF LEARNING

UNIVERSITY OF INDIANAPOLIS

SURVEY REMINDER

Please complete a survey in Sched
for each session you attend.



**INDIANA EARLY
COLLEGE SUMMIT**