

**CELL**

CENTER OF EXCELLENCE IN  
LEADERSHIP OF LEARNING

UNIVERSITY OF **INDIANAPOLIS**

## STATE FINANCIAL AID & INDIANA PRE-ADMISSIONS UPDATES WITH THE INDIANA COMMISSION FOR HIGHER EDUCATION

### **Presenters:**

**Kate Marling**

Postsecondary Transitions Manager  
Indiana Commission for Higher  
Education

**Victoria Phair**

Postsecondary Transitions Manager  
Indiana Commission for Higher  
Education

**INDIANA EARLY  
COLLEGE SUMMIT**

# INDIANA COMMISSION FOR HIGHER EDUCATION UPDATES

Indiana Early College Summit: Closing the Gap

---

Victoria Phair, *Postsecondary Transitions Manager*

Kate Marling, *Postsecondary Transitions Manager*

June 2026



INDIANA COMMISSION for  
HIGHER EDUCATION

# OVERVIEW

Who is CHE?

21st Century Scholars Program

Indiana Pre-Admissions: Your Path to College

Enrollment Ready Campaign

FAFSA and Financial Aid Program Updates

Data Dashboards

Best Practices and Support

# INDIANA COMMISSION FOR HIGHER EDUCATION

The Indiana Commission for Higher Education (CHE, Commission) is a fourteen-member public body created in 1971 to:

- ▶ Plan for and coordinate Indiana's state supported system of postsecondary education;
- ▶ Review appropriation requests of state educational institutions;
- ▶ Make recommendations to the governor, budget agency or the general assembly concerning postsecondary education; and
- ▶ Administer state financial aid programs.

---

# 21ST CENTURY SCHOLARS

CHE.IN.gov



INDIANA COMMISSION *for*  
HIGHER EDUCATION

# 21ST CENTURY SCHOLARS PROGRAM

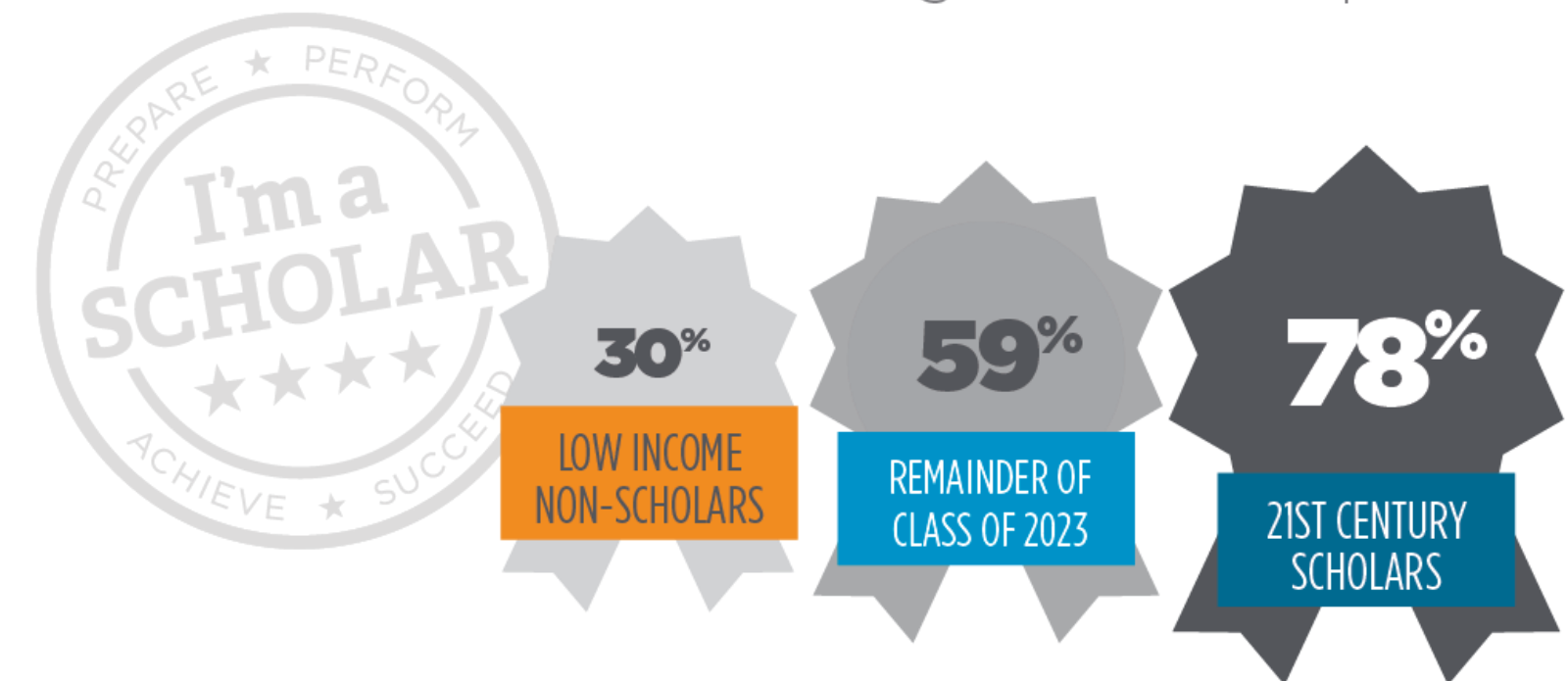
- ▶ The program was established in 1990 to increase Hoosier students' aspirations for and access to higher education.
- ▶ Income-eligible students are automatically enrolled or must apply in 7th or 8th grade.
- ▶ Scholars who fulfill the Scholar Pledge earn up to four years of paid tuition at an Indiana college.



INDIANA COMMISSION for  
HIGHER EDUCATION

## SOCIOECONOMIC STATUS

**21st Century Scholars** are more likely to attend college than their peers.





INDIANA COMMISSION for  
HIGHER EDUCATION

# 21ST CENTURY SCHOLARS AWARD



- ▶ Pays up to four years full tuition at Indiana public colleges.
  - ▶ **Included:** Tuition and regularly-assessed fees
  - ▶ **Not Included:** Room and board, books, transportation, and miscellaneous expenses
- ▶ Pays partial tuition at approved Indiana private or proprietary colleges.
  - ▶ **Private:** Pays average cost of 4-year public colleges (\$9,516)
  - ▶ **Proprietary:** Pays equivalent cost of Ivy Tech Community College (\$5,154)
- ▶ Many colleges offer supplemental scholarships/incentives.



INDIANA COMMISSION for  
HIGHER EDUCATION

# 21ST CENTURY SCHOLARS ELIGIBILITY REQUIREMENTS



- ▶ Be an US citizen or eligible non-citizen and Indiana resident
- ▶ Be automatically enrolled or apply in 7th or 8th grade
- ▶ Agree to the Scholar Pledge
- ▶ Graduate with a **2.5 cumulative Grade Point Average** (GPA) on a 4.0 scale
- ▶ Graduate with at least a **Core 40** high school diploma or the new Indiana Diploma starting with Class of 2029
  - ▶ Readiness Seals will not be required, but are encouraged
- ▶ Complete the Scholar Success Program (SSP) in ScholarTrack
- ▶ Meet financial means testing upon filing the Free Application for Federal Student Aid (FAFSA) by **April 15** senior year of high school

# AUTOMATIC ENROLLMENT

## HEA 1449-2023



INDIANA COMMISSION for  
HIGHER EDUCATION

- ▶ Cadence for automatic enrollment: October, February, and June.
- ▶ Notification letters will be sent to 8th grade students (class of 2030) in Spring and Summer 2026 before entering high school.

**Questions?** Contact your regional Outreach Coordinator at [learnmoreindiana.org/contact](https://learnmoreindiana.org/contact).

# APPEALS



INDIANA COMMISSION for  
HIGHER EDUCATION

- ▶ Appeals can be filed for a variety of reasons: enrollment deadline, FAFSA deadline, GPA, diploma type, SSP completion and financial means testing.
  - ▶ Examples: Foster students who are unable to reach a 2.5 GPA due to enrolling during high school. Students with an Individualized Education Plan (IEP) that prevents them from taking required classes to earn a Core 40 diploma.
- ▶ Filing an appeal is **not** a guarantee that it will be approved.
- ▶ Appeals are submitted through ScholarTrack and questions can be addressed to [awards@che.in.gov](mailto:awards@che.in.gov).

*NOTE: Missed Enrollment Deadline should be addressed by the end of student's freshman year.*

---

# INDIANA PRE-ADMISSIONS



INDIANA COMMISSION *for*  
HIGHER EDUCATION

CHE.IN.gov

# WHAT IS INDIANA PRE-ADMISSIONS?



- ▶ *Indiana Pre-Admissions: Your Path to College* is a statewide pre-admissions initiative of the Indiana Commission for Higher Education, in partnership with Indiana’s higher education institutions, which kicked off with the high school graduating class of 2024.
- ▶ This important initiative is a tool to promote the value of higher education by informing Hoosier high school seniors about their choices for postsecondary education and training in Indiana and the various resources to help them afford these options.

# SENATE ENROLLED ACT

## SEA 448-2025



INDIANA COMMISSION for  
HIGHER EDUCATION

- ▶ The bill codifies Indiana Pre-Admissions matching based on the Indiana Diploma with Enrollment Honors Plus Seal guaranteeing automatic acceptance at public institutions to students who:
  - ▶ Graduate with the new Indiana Diploma;
  - ▶ Earn the Enrollment Honors Plus Seal;
  - ▶ Submit a score from a nationally recognized college admissions exam; and
  - ▶ Meet other conditions established by the Commission in collaboration with the public colleges.
- ▶ Admissions approval does not guarantee admittance to a specific academic degree or program at the college.
- ▶ Private institutions can opt in to matching based on the Enrollment Honors Plus seal annually via an MOU.

# HOW DOES THIS WORK?



- ▶ Participating campuses set designated cut scores consisting of GPA and/or SAT scores and opt in to diploma matching during the MOU and Data Share Agreement processes.
  - ▶ These cut scores are not public.
- ▶ Participating high schools submit their rising seniors' anticipated diploma types and GPAs to CHE during graduation details collection. The Department of Education sends SAT scores to CHE.
- ▶ CHE then matches students based on their reported diploma types, GPAs, and SAT scores to the criteria set by campuses and SEA 448-2025.

# STUDENT & FAMILY EXPERIENCES



INDIANA COMMISSION for  
HIGHER EDUCATION

- ▶ Initial letters are mailed to students to introduce Indiana Pre-Admissions, inform students which institutions are participating, and make families aware of the Official Letter that will be mailed to them in the coming weeks.
- ▶ Official letters are mailed to students containing their official pre-admissions decisions. Additional copies of the letter are sent addressed to the students' parents/guardians. Letters include details on next steps and filing the Free Application for Federal Student Aid (FAFSA).
  - ▶ The back of the parent/guardian letter also includes information on postsecondary education and training opportunities for adults.

# STUDENT & FAMILY EXPERIENCES



INDIANA COMMISSION for  
HIGHER EDUCATION

Other resources for students and families:

- ▶ The Pre-Admissions landing page includes translated copies of all Pre-Admissions letters in Spanish, Burmese, and Hakha Chin.
- ▶ Students are encouraged to browse participating institutions and apply via the Pre-Admissions landing page.
- ▶ Students can log in to their ScholarTrack account to view their matches once letters have been mailed.
  - ▶ Students can no longer see their matches in ScholarTrack after May 30th of their cohort year.
  - ▶ High School Counselors are also able to see which institutions students have been pre-admitted to.

# INDIANA PRE-ADMISSIONS

## 2025 COHORT VS. 2026 COHORT

2025	2026
<b>Participating Schools:</b>	<b>Participating high schools:</b>
▶ 390 high schools	▶ 456 high schools
▶ 39 of 51 (76%) campuses	▶ 40 of 51 (78%) campuses
▶ 17 public campuses	▶ 18 public campuses
▶ 22 private campuses	▶ 22 private campuses
▶ 67,000 decision letters were mailed	▶ 74,000+ decision letters were mailed
<b>Data Breakdown</b>	<b>Data Breakdown</b>
▶ On average, students were pre-admitted to 24 campuses.	▶ On average, students were pre-admitted to 27 campuses.
▶ 24% of students received all 39 campuses (16,000+).	▶ 30% of students received at least 40 campuses (23,000+).

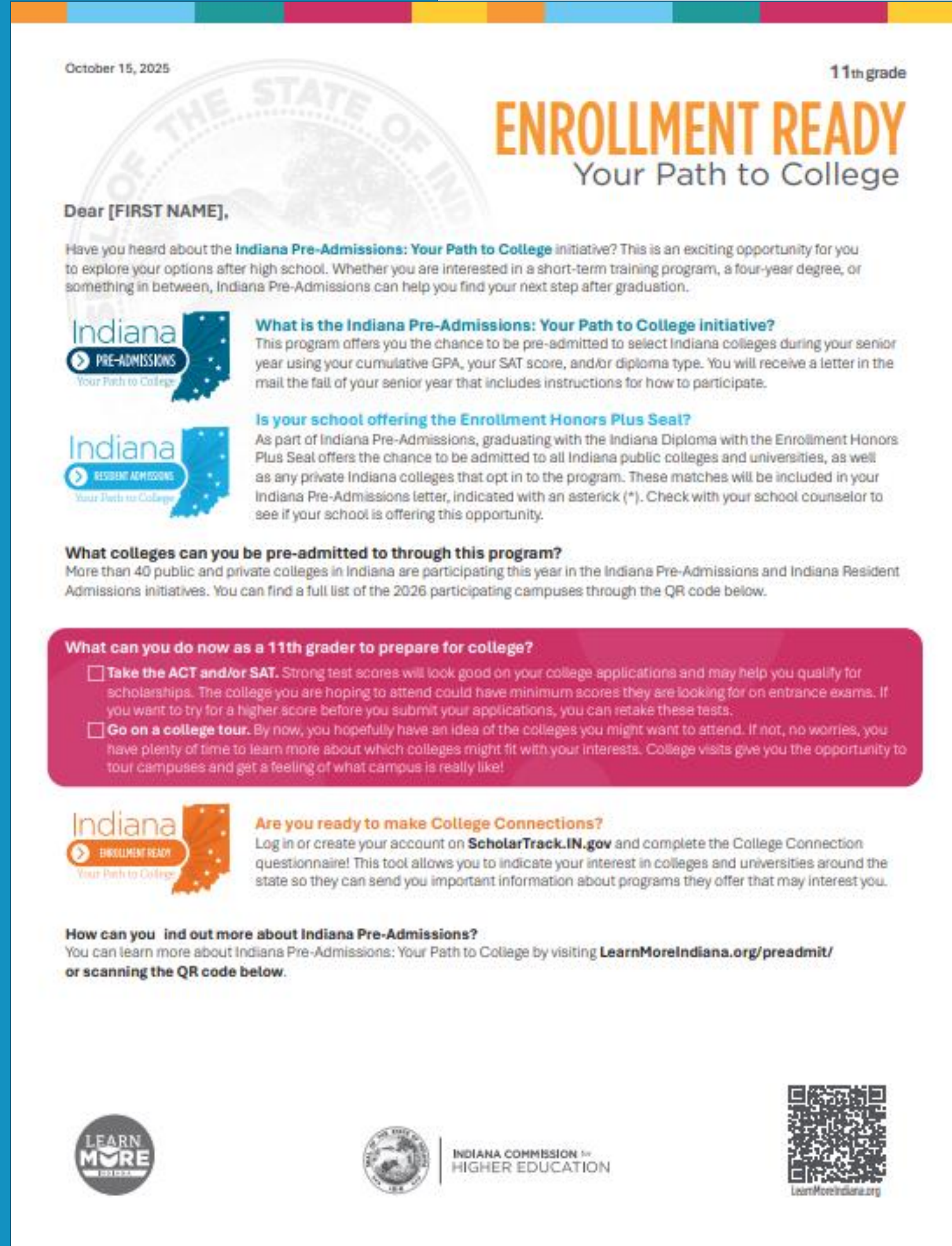
---

# ENROLLMENT READY CAMPAIGN

CHE.IN.gov



INDIANA COMMISSION *for*  
HIGHER EDUCATION



# ENROLLMENT READY CAMPAIGN

- ▶ Campaign started spring 2025 to help prepare students to enroll after graduation.
- ▶ Letters are mailed to all 8th, 9th, 10th, and 11th grade students in Indiana.
- ▶ This campaign coincides with Indiana Pre-Admissions letters and the annual College GO! Campaign.

# COLLEGE CONNECTION

- ▶ Students 13 and older can opt in to receive more information from campuses of their choice on ScholarTrack.
  - ▶ They will be able to change their selections at any time.
  - ▶ Students can unsubscribe from communications from any school directly through the university.
- ▶ Student also have the option to indicate Career Interests.
- ▶ Institutions are given lists of interested students periodically for marketing and outreach.

**LEARN MORE INDIANA** ScholarTrack

DASHBOARD

## College Connection

You can change your selections at any time.

CAMPUS  CAREER INTEREST

Choose which campuses you'd like to hear from below.

Campus 1:

Campus 2:

Campus 3:

Campus 4:

Campus 5:

+ Add another campus

**SAVE**

To learn more about your post high school options,  
[Choosing a College](#) [Military Pre-Enrollment](#)

To unsubscribe from a campus's mailing list, please contact them directly.

---

# FAFSA & STATE FINANCIAL AID UPDATES



# FAFSA UPDATES



INDIANA COMMISSION for  
HIGHER EDUCATION

- ▶ **April 15, 2026** – Indiana’s State Financial Aid Deadline
- ▶ Indiana reached **60%** of high school seniors who filed a FAFSA for the 2025-2026 form.
- ▶ Updates to the 2026-2027 FAFSA form:
  - ▶ Contributor Invite Flow
    - ▶ Only contributor email(s) are needed – Generates a 7-digit code sent to the contributor.
    - ▶ Students can also see the code on the pending submission page that they can give the contributor.
  - ▶ Real Time SSN Matching while creating their StudentAid.gov account (formerly FSA ID).

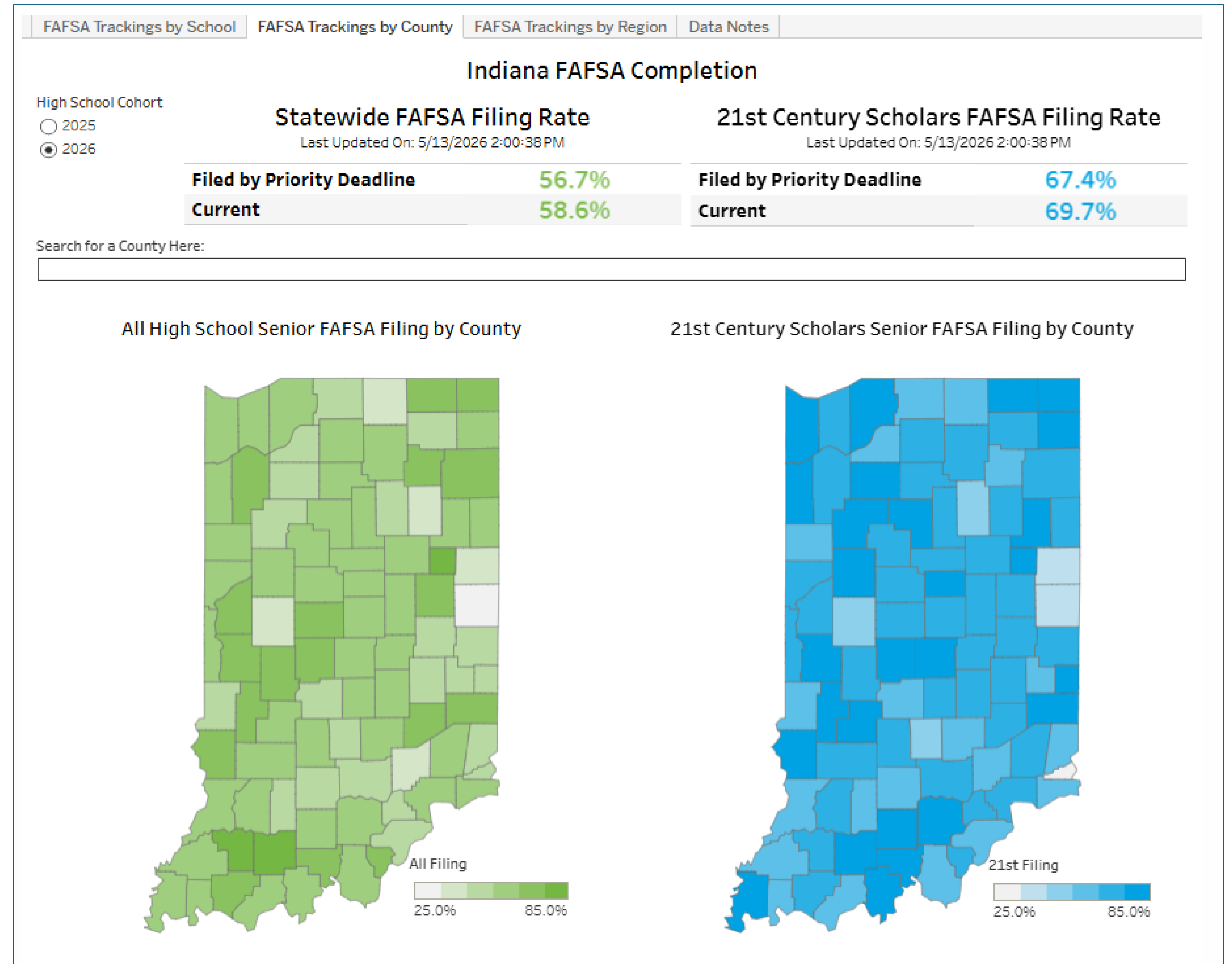
# SEA 167-2023



INDIANA COMMISSION for  
HIGHER EDUCATION

- ▶ This act makes the Free Application for Federal Student Aid (FAFSA) **required** for high school seniors.
- ▶ Broad **opt-out provisions** are included for parents/guardians and emancipated students.
- ▶ Additionally, a school can **waive** the requirement for a student **after April 15** so long as at least two communications about filing the FAFSA have been sent to the parents/guardians.
- ▶ 2026-2027 FAFSA waiver is available.
- ▶ Waivers should be reported before the end of the 2025-2026 academic year in ScholarTrack through the Graduation Detail Widget or through Bulk Uploading for a cohort.
  - ▶ Waivers **should not** be submitted until after April 15, 2026.

# CURRENT INDIANA STATEWIDE FILING PROGRESS



# STATE FINANCIAL AID UPDATES



INDIANA COMMISSION *for*  
HIGHER EDUCATION

- ▶ Visit [Learn More Indiana's Scholarships page](#) for state financial aid program updates.
- ▶ 2026-2027 Frank O'Bannon Grant Chart is available.
- ▶ Mitch Daniels Early Graduation Scholarship
  - ▶ The **2026-2027 application** opened **November 1**.
    - ▶ Early graduates that will be graduating at least one year early with Cohort 2026.
  - ▶ School staff will need to request **Outreach Coordinators** to adjust and lock student's cohort in ScholarTrack.
- ▶ Next Generation Hoosier Educators Scholarship
  - ▶ School staff will need to verify academic information.

Indiana Aid Program	Who Qualifies?	How Much?
<b>21st Century Scholars Program</b>	Income-eligible Hoosier students, must apply or be enrolled during 7th or 8th grade year	Four years of up to 100% tuition at an eligible Indiana college
<b>Adult Student Grant</b>	Hoosier adults who are starting or completing an associate degree, bachelor's degree, or certificate	A renewable award of up to \$2,000
<b>Child of Veterans and Public Safety Officers (CVO)</b>	Students whose parent is a disabled military veteran or deceased or disabled public safety officer	Up to 100% of tuition at a public Indiana college and \$5,000 at a private Indiana college
<b>Earline S. Rogers Student Teaching Stipend for Minorities</b>	Any student from an underserved county* who will be participating in student teaching during the upcoming academic year	The amount varies based on student need and available funds
<b>EARN Indiana</b>	Students enrolled in an Indiana high school or college interested in work-base learning. College students must file a FAFSA and demonstrate financial need	Varies, but all internships are paid at least federal minimum wage
<b>Frank O'Bannon Grant</b>	Full-time college students with financial need	\$400 to \$10,600, depending on your college and your financial need
<b>Indiana National Guard Supplement Grant</b>	Students who are active members of the Indiana Air or Army National Guard	Up to 100% of tuition at a public Indiana college and up to \$5,000 at a private Indiana college

Indiana Aid Program	Who Qualifies?	How Much?
<b>Mitch Daniels Early Graduation Scholarship</b>	Students who graduate from a public high school at least one year early	A one-time award of up to \$4,000
<b>Next Generation Hoosier Educators Scholarship</b>	High-achieving high school and college students who plan to teach in Indiana for at least five years after graduation. Additional aid may be available for students residing in or graduating high school from an underserved county.	Up to \$10,000 per year for four years
<b>Student Teaching Stipend for High-Need Fields</b>	Students who plan to teach in a high-need field where there is a shortage of candidates	The amount varies based on student need and available funds
<b>Transition to Teaching Scholarship</b>	Hoosier students who possess a bachelor's degree, are employed or volunteer at a school, have financial need, and plan to teach for at least five years after earning their credential	A one-time award of up to \$10,000 at an eligible Transition to Teaching Program
<b>William A. Crawford Minority Teacher Scholarship</b>	Students who currently reside in or resided in an underserved county* majoring in education who plan to teach in Indiana for at least three years after graduation	The amount varies based on student need and available funds
<b>Workforce Ready Grant</b>	Students who enroll in a high-demand certificate program at Ivy Tech Community College, Vincennes University, or another approved training provider	Up to 100% of tuition at Ivy Tech, Vincennes, or another approved training provider

---

# DATA DASHBOARDS



# DATA DASHBOARDS



INDIANA COMMISSION *for*  
HIGHER EDUCATION

## SCHOLAR SUCCESS PROGRAM (SSP) DASHBOARD

- ▶ Tableau dashboard showcasing ScholarTrack Account Creation and SSP progress for Scholars

## FAFSA COMPLETION DASHBOARD

- ▶ Tableau dashboard that shows FAFSA filing rates by school, county, and region for the 2026-2027 FAFSA.
  - ▶ Dashboard can be adjusted back to the 2025 cohort to see last year's filing rates, as well.

---

# BEST PRACTICES & REMINDERS



# HIGH SCHOOLS: HOW TO SUPPORT YOUR STUDENTS



INDIANA COMMISSION for  
HIGHER EDUCATION

- ▶ Invite CHE's Outreach Coordinators to help create ScholarTrack accounts, complete SSP activities and file the FAFSA.
  - ▶ Freshman cohorts = ScholarTrack account creation and early intervention (GPA, classes, diploma track, etc.)
  - ▶ Senior cohorts = FAFSA filing by April 15 and completing all SSP activities by June 30
- ▶ Have ScholarTrack School User or School Admin accounts for the staff tasked with supporting Scholars and graduating students filing their FAFSAs in your school.
  - ▶ Community Partners can have access with School Admin user approval.
- ▶ Participate in *Indiana Pre-Admissions: Your Path to College* initiative.
  - ▶ Ensure your students know what Indiana colleges and universities are excited and ready to welcome them into their freshman classes.
- ▶ Encourage the pursuit of Readiness Seals for the new Indiana Diploma.

# RESOURCES



INDIANA COMMISSION *for*  
HIGHER EDUCATION

## LearnMoreIndiana.org

- ▶ Materials Library – helpful flyers and handouts
- ▶ FAQs of the 21st Century Scholars Program
- ▶ State Financial Aid information

## CHE.IN.gov

- ▶ State Financial Aid information
- ▶ Appeals information
- ▶ Data and Research page contains various reports and dashboards

# ADDITIONAL RESOURCES



INDIANA COMMISSION *for*  
HIGHER EDUCATION

- ▶ **ScholarTrack Counselor Manual** – email your Outreach Coordinator for a copy if you do not have one.
- ▶ **Learn More Indiana [YouTube Page](#)**
  - ▶ Find past webinars and trainings on various topics including:
    - ▶ 21st Century Scholars Automatic Enrollment
    - ▶ FAFSA
    - ▶ Pre-Admissions
    - ▶ Graduation Details Collection
    - ▶ Indiana College Core
    - ▶ Career Discovery Meetings

# CHE EMAIL INBOXES

- ▶ 21st Century Scholars: **[scholars@che.in.gov](mailto:scholars@che.in.gov)**
- ▶ Career Discovery Meetings: **[CDM@che.in.gov](mailto:CDM@che.in.gov)**
- ▶ Career Scholarship Accounts: **[CSA@che.in.gov](mailto:CSA@che.in.gov)**
- ▶ Career and Technical Education: **[CTE@che.in.gov](mailto:CTE@che.in.gov)**
- ▶ Grants: **[grants@che.in.gov](mailto:grants@che.in.gov)**
- ▶ Indiana College Core: **[ICC@che.in.gov](mailto:ICC@che.in.gov)**
- ▶ *Indiana Pre-Admissions: Your Path to College*: **[preadmissions@che.in.gov](mailto:preadmissions@che.in.gov)**
- ▶ Next Generation Hoosier Educators Scholarship: **[NextTeacher@che.in.gov](mailto:NextTeacher@che.in.gov)**
- ▶ State Financial Aid: **[awards@che.in.gov](mailto:awards@che.in.gov)**

# STAY CONNECTED

- ▶ Join our listservs to get general CHE updates, notices, and press releases.
- ▶ [Subscribe for Updates](#)

# CONTACT INFORMATION

**Victoria Phair**

Postsecondary Transitions Manager

[vphair@che.in.gov](mailto:vphair@che.in.gov)

**Kate Marling**

Postsecondary Transitions Manager

[kmarling@che.in.gov](mailto:kmarling@che.in.gov)



INDIANA COMMISSION for  
HIGHER EDUCATION

**CHE.IN.gov**



**INDIANA COMMISSION** *for*  
**HIGHER EDUCATION**

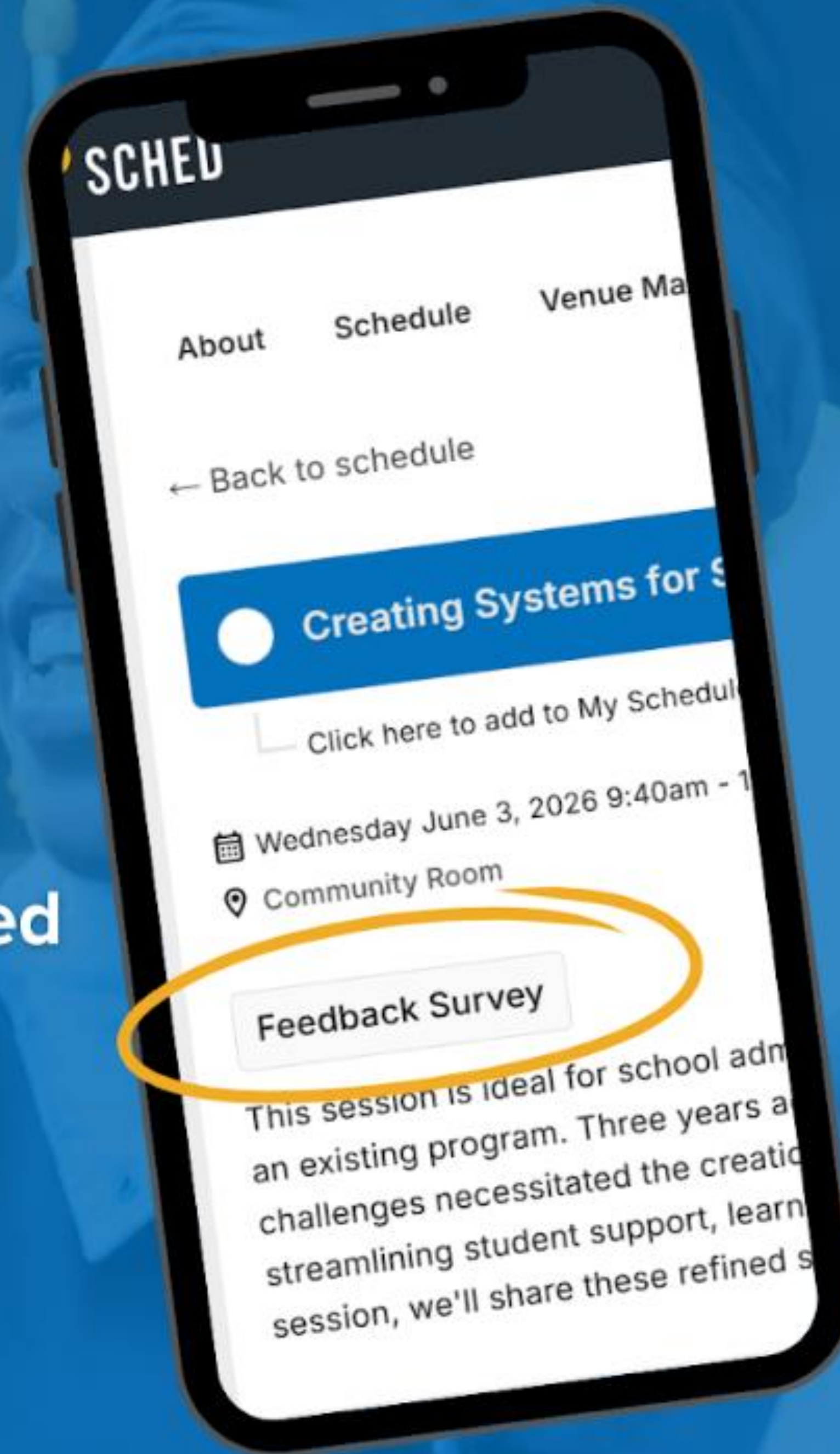
**CELL**

CENTER OF EXCELLENCE IN  
LEADERSHIP OF LEARNING

UNIVERSITY OF INDIANAPOLIS

## SURVEY REMINDER

Please complete a survey in Sched for each session you attend.



**INDIANA EARLY  
COLLEGE SUMMIT**