



# Demystifying the Georgia Parole Process

A Data-Driven Approach to Executive Clemency and Stakeholder Advocacy

Presented by the Pre-Release Considerations Division

# Transparency Blueprint: The Georgia Parole Framework



## CONSTITUTIONAL INDEPENDENCE

The only non-elected Constitutional Officers in Georgia, fully insulated from political pressure.



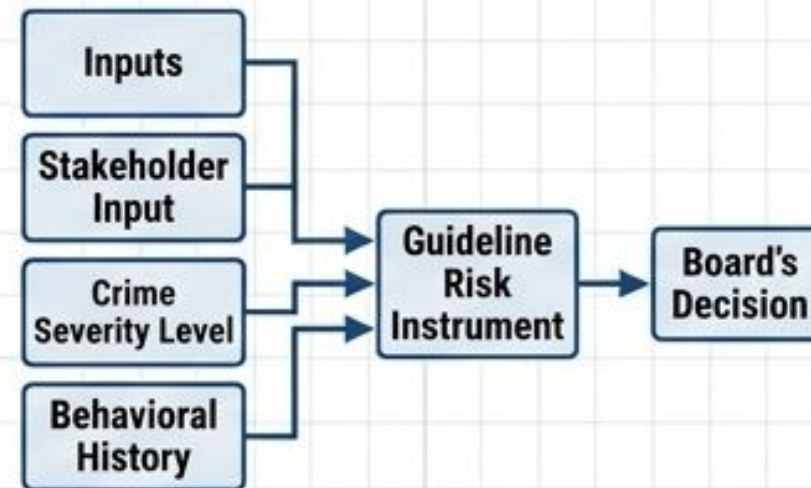
insulated pressures

insulated aspect



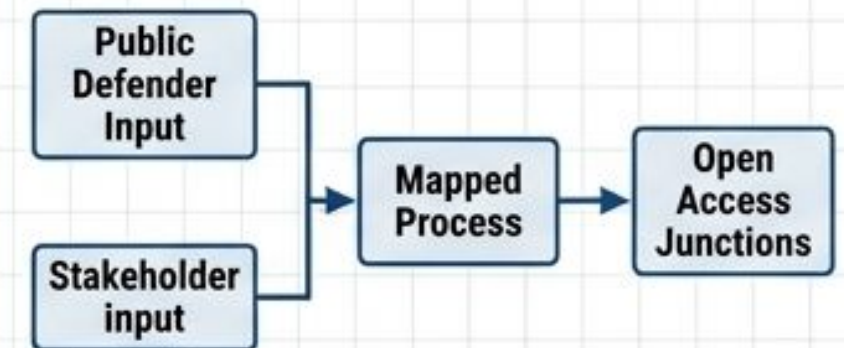
## DATA-DRIVEN CALCULUS

Decisions are not based on arbitrary feelings, but generated through scientific, measurable risk grids and behavioral history.



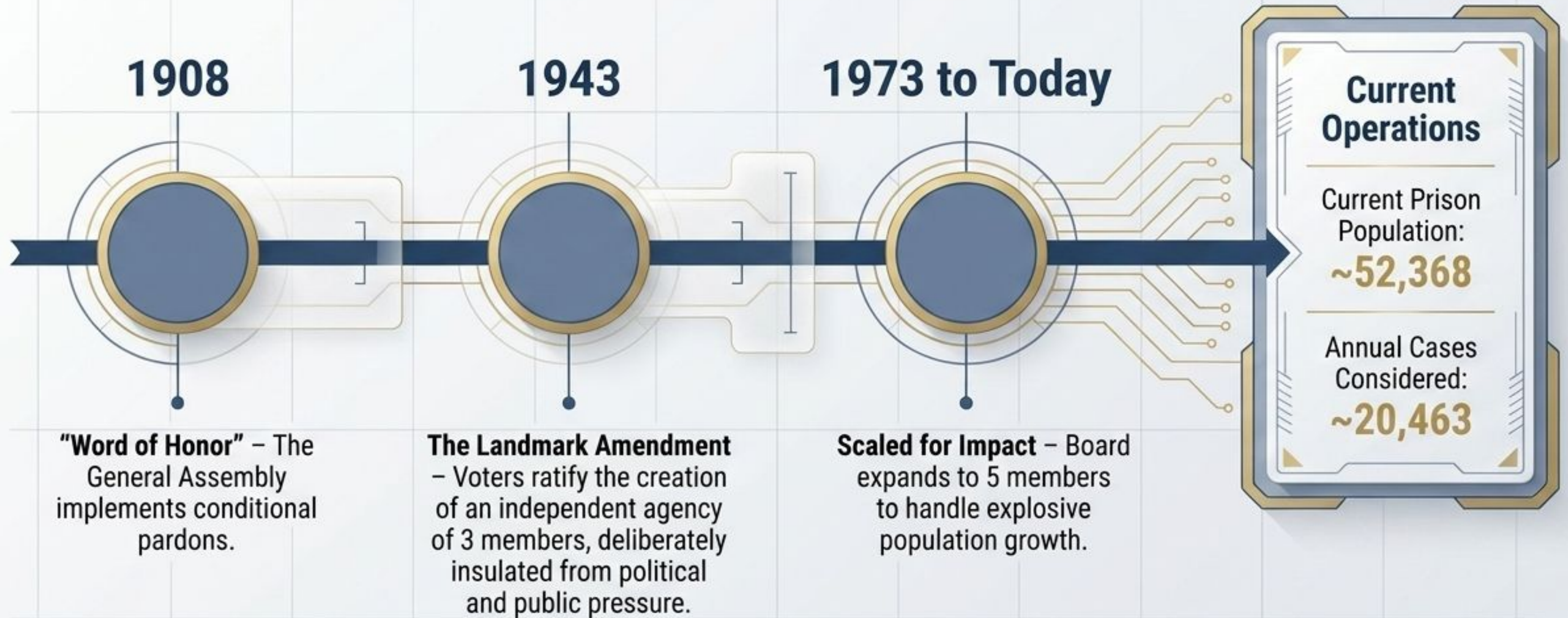
## TRANSPARENCY

An open, highly mapped process that actively solicits Public Defender and stakeholder input at predictable junctions.

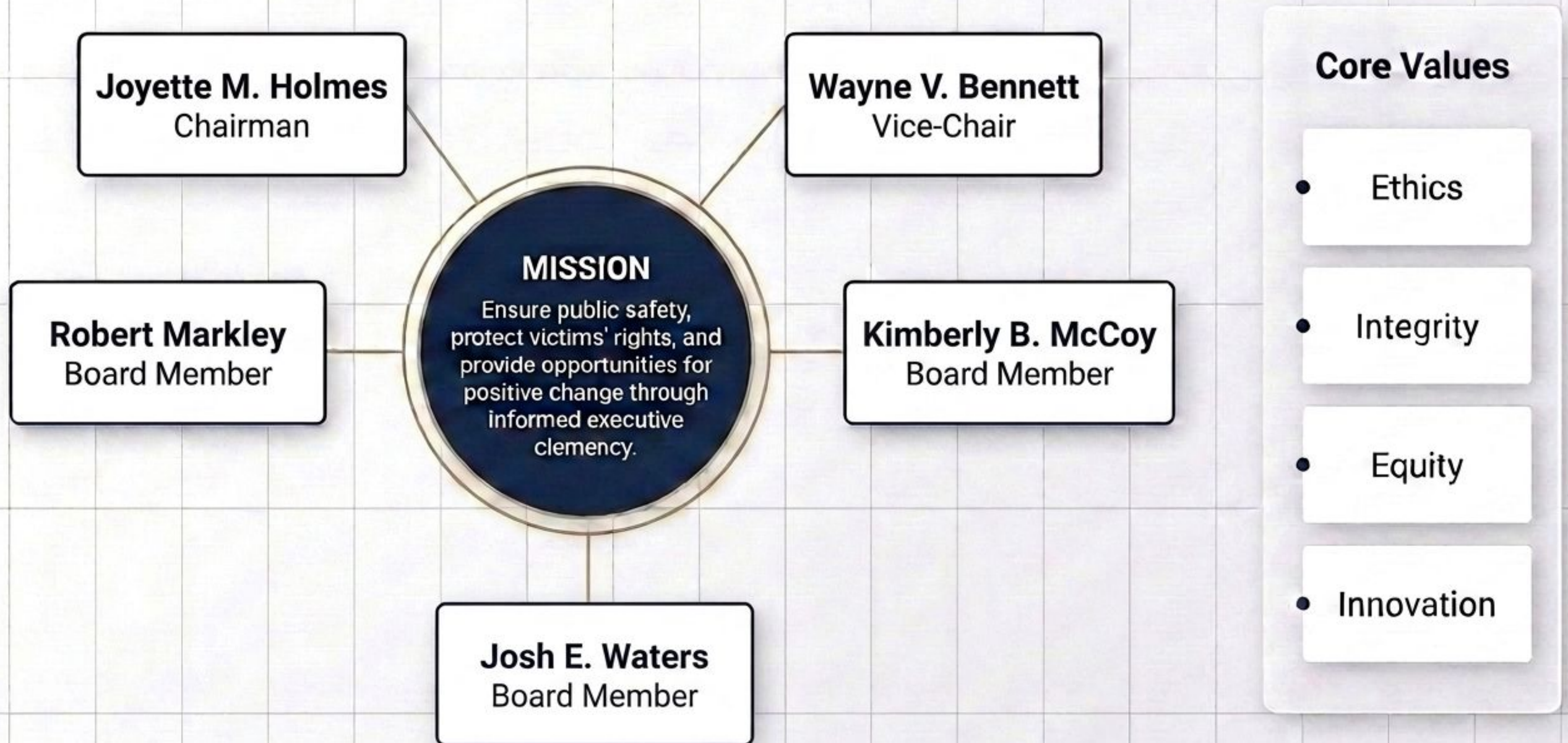


**Parole is not a secret room; it is a measurable, accessible algorithm.**

# Evolution of Georgia Parole: A Timeline of Independence & Scale

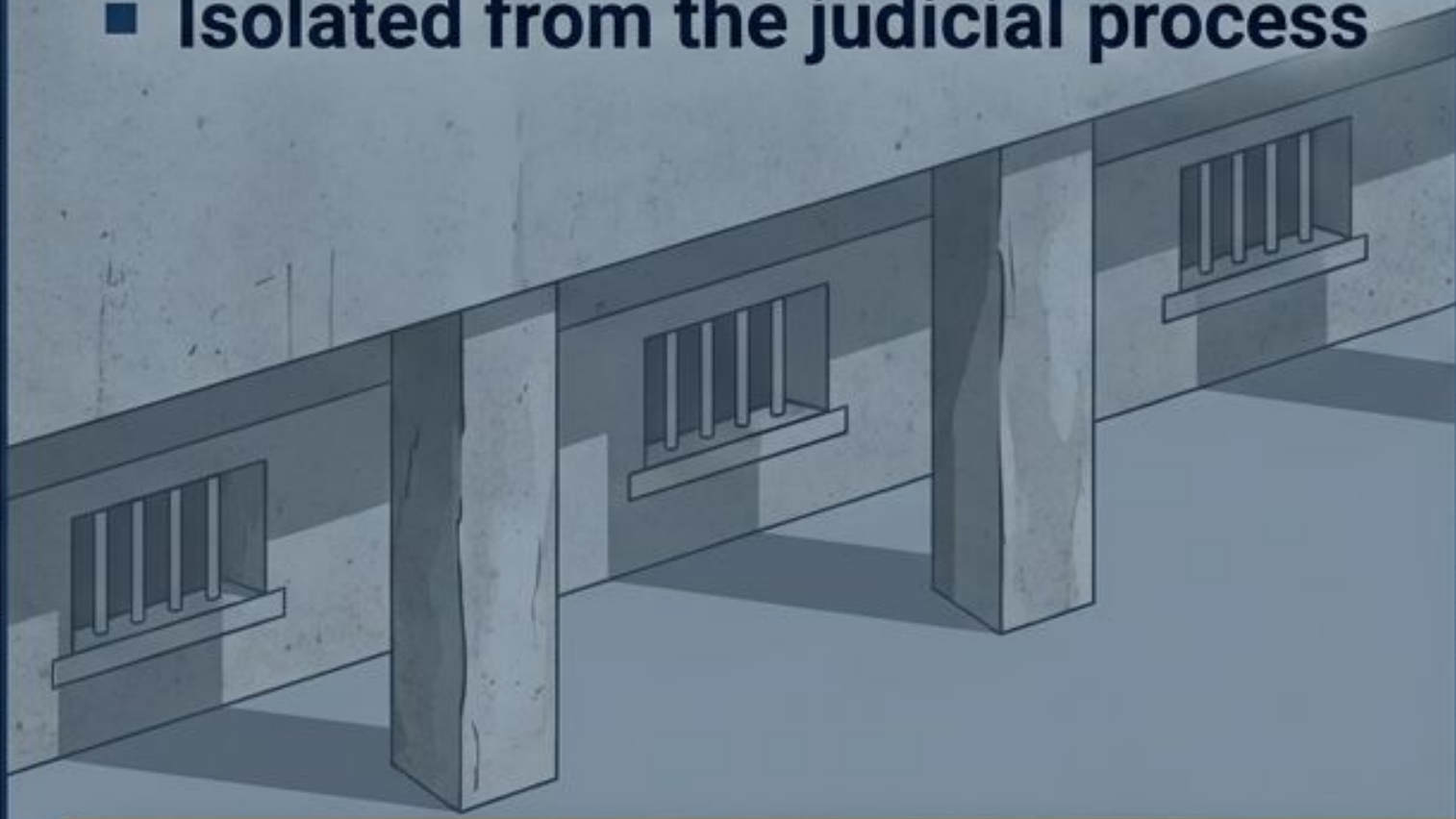


# Transparency Blueprint: Board Composition & Core Values



## The Shawshank Model

- Secretive and arbitrary
- Closed-door decisions
- Isolated from the judicial process



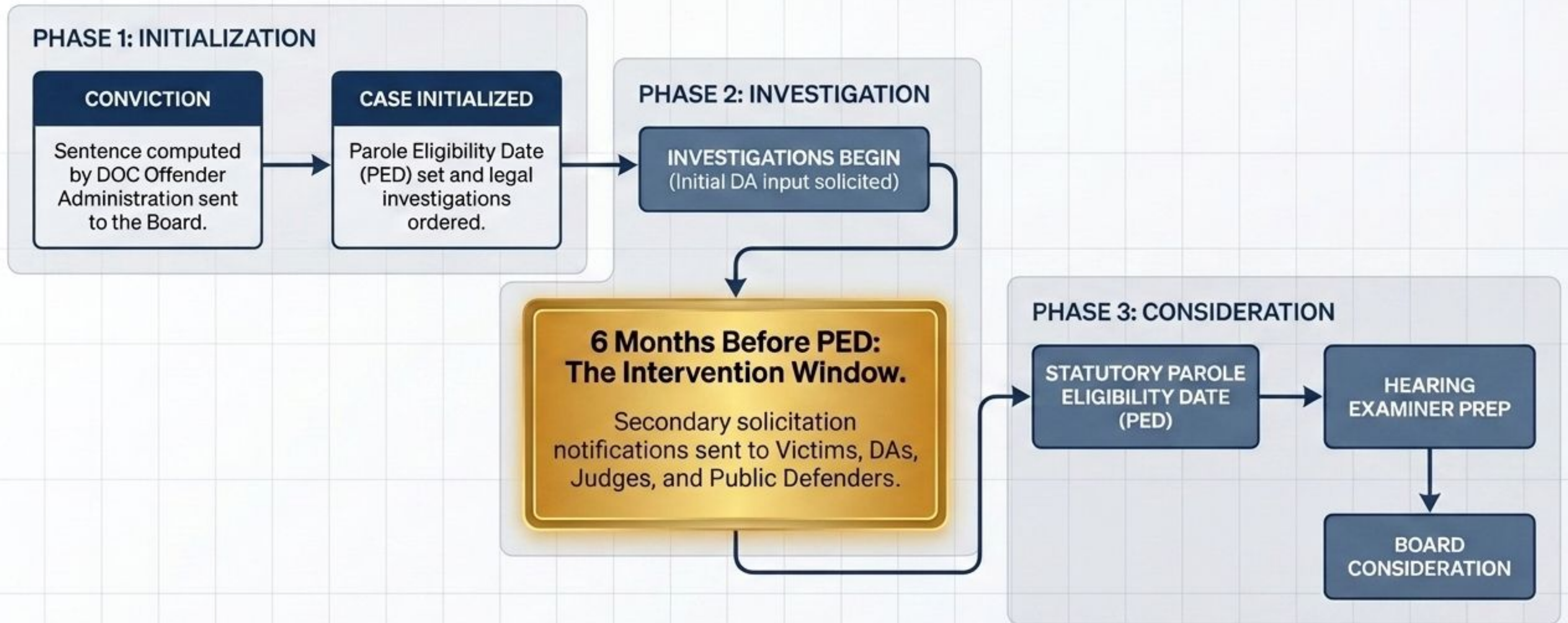
## The Georgia Model

- Publicly accessible algorithms
- Mapped step-by-step for the public
- Actively solicits stakeholder input

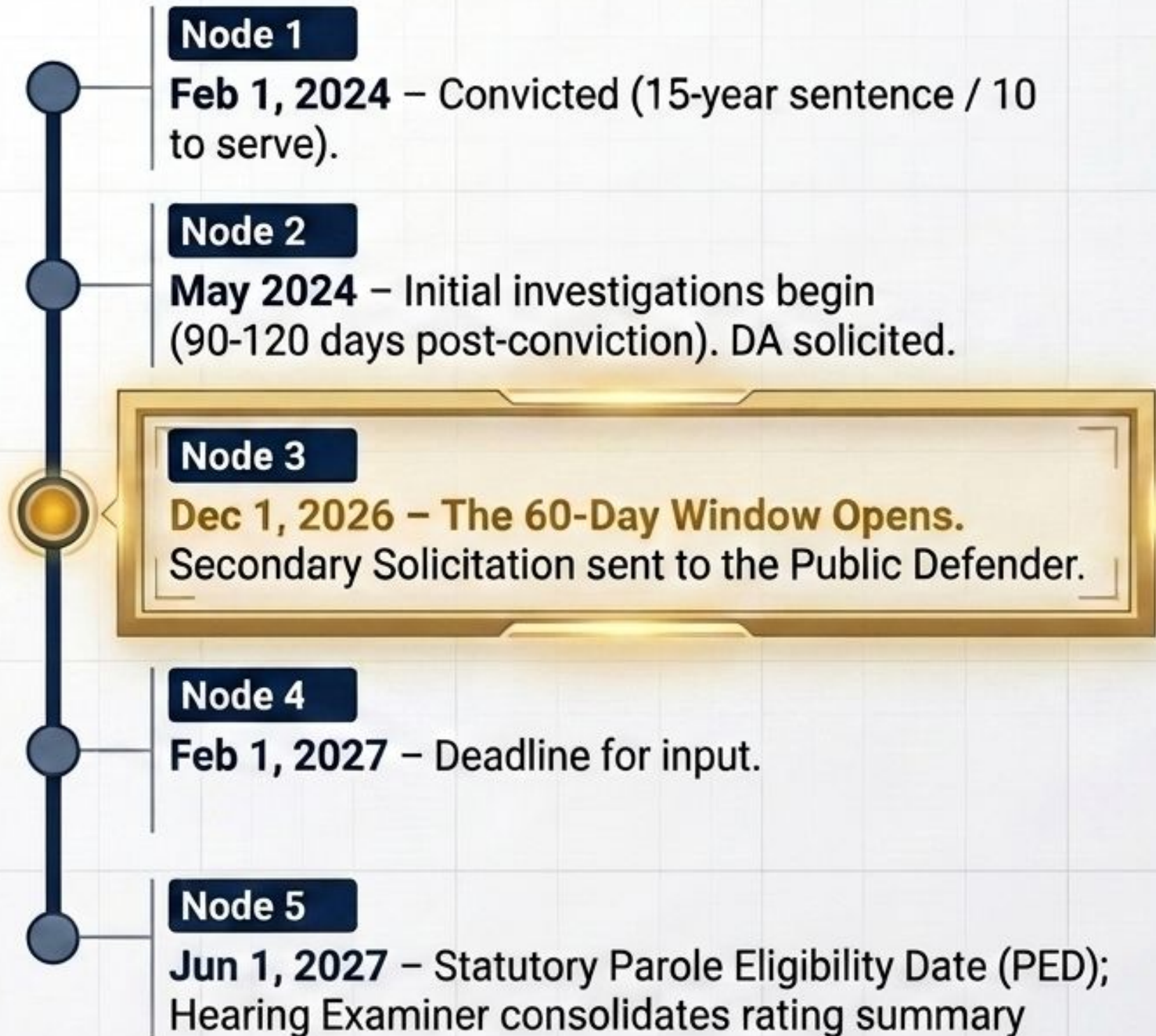


**All interested stakeholders—especially Public Defenders—can engage the process and actively advocate for or against clemency.**

# Transparency Blueprint: Pre-Decision Parole Process Flow



# Case Anatomy: John Doe (Robbery Conviction)



**ACTION ZONE:**  
This is the **exact moment** defense attorneys must **intervene** with **mitigating circumstances**.

# Calculating the Guidelines Recommendation: The Core Equation.



The Board does not start with a blank slate; **they start with a scientifically generated baseline risk assessment.**

# Variable 1: Crime Severity Levels (CSL)



## The Ceiling: Exemptions

The 7 Deadly Sins (Aggravated Sexual Battery, Murder, Armed Robbery, etc.) are Not Parole Eligible except on a Life Sentence.

# Variable 2: Risk to Re-Offend Factors

Age at Current Prison Admission

Number of Prior Felony/Misdemeanor Arrests

Current Admission Type (Parole/Probation Revocation)

Primary Offense Property

GDC Validated Gang Member Status (Male inmates)

GDC Violent Disciplinary Charges

Prior Arrest for Felony Drug Offense (Female inmates)

**Insight:** Unlike the permanent Crime Severity Level, the Risk Score is actively manipulated by institutional conduct and behavioral history.

# 2017 Parole Decision Guidelines

Y-Axis	Risk Assessment:		
	Low	Medium	High
1			
2			
3	22 months		28 months
4			
5	34 months		50 months
6			
7	44 months		76 months
8	65% of sentence		90% of sentence

Crime Severity Level (CSL) 1-8

The Intersection of Severity and Risk dictates the **Baseline Time-to-Serve Recommendation.**

# The Rule of 3



Each Board Member reviews the consolidated presentation and votes independently. The system requires **three "like" votes** to confirm a decision and establish a **Tentative Parole Month (TPM)**.



The Post-Decision Path

# The ROI of Clemency

## Financial Reallocation

Incarceration Cost: \$80.31/day

Parole Supervision Cost: \$3.13/day

# \$380 Million

Annual Cost Avoidance created  
by clemency action.

## Efficacy Gauges



Successful Parole Completion  
Rate in Georgia (FY25)



National Average

**5,588** individuals granted clemency in FY25, contributing to **21,151**  
**active positive-change parole supervision** in communities.

# Your Blueprint for Engagement

Your input is critical. Leverage the 60-day review window to provide mitigating circumstances and advocate for your clients.

**Pre-Release Considerations**  
formally known as **Clemency Division:**

**Division Director** Crystal L. Moon, Ph.D Candidate

**Deputy Director** Lisa D. Copeland

**Attorney Liaison** Steve Baustin

Fostering partnerships and public safety through informed, data-driven clemency.