

Why the Routines-Based Interview Is a Cross- Cultural Success

Robin McWilliam & Cami Stevenson



Outline

About us

Overview of the RBI+

Special features

Implementation

Summary

About us

Revolutionizing early childhood intervention birth-5 through a functional, family-centered approach



Overview of the RBI

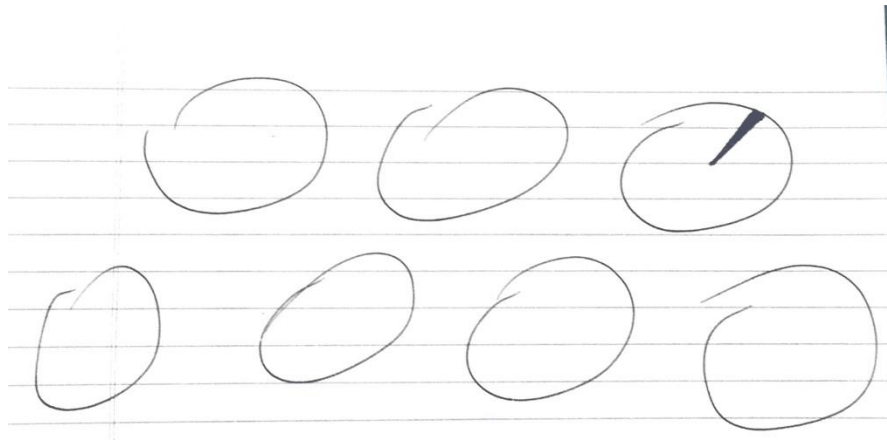
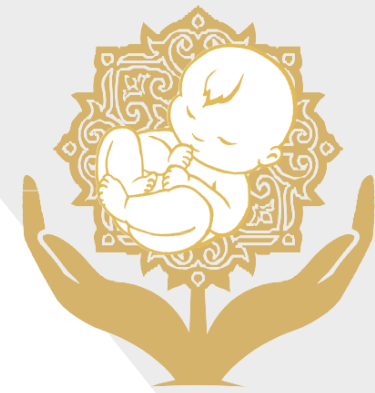
Assessing children's
functioning by asking
about their **engagement,**
independence, and
social relationships in
their everyday routines

Structure of the RBI

- Ecomap
- EISR in routines
- Note taking
- Satisfaction rating for transition
- Time, worry, & change questions
- Recap
- Parents choose child & family goals



Relevance



- 1. Functioning in regular routines**
- 2. All the intervention occurs between visits**
- 3. Build the caregiver's capacity**

Cultural Issues

White people's assumptions

We don't deny an EBP to anyone

Māori suggestion for ecomap

Reticence to talk about themselves

Parents who don't know child functioning in routines

Emotional parents

Parents whose experience is with therapy-based intervention



Interviewer Style

Respectful informality

Being natural and genuine

Call parents by their first names,
not “Mom” and “Dad”

Keep the conversation on track

Acknowledge feelings (check
in) before facts

No intervention suggestions



Value of structure

Steps of RBI help the process and the product—a list of functional and family goals

The importance of digging deep during the routines conversation

The recap and goal decision making + clarifying the goal without inserting your priorities or assumptions

We certify people who show proficiency at conducting RBIs



International Implementation

Australasia

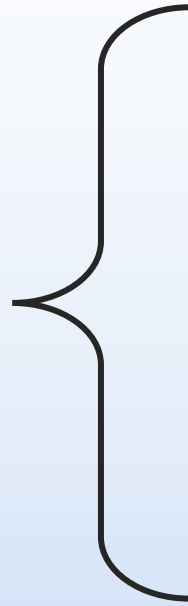
Far East

Southern Europe

Central Europe



Thank you



camistevenson@hotmail

www.eieio.ua.edu