

It's All In the Prompt

Using AI to Design Formative Assessments



<https://bit.ly/4fXSmnj>

Dr. Daisy Skelly

Parkway School District

Lindenwood University

ELevate 2026





It's All in the Prompt

Using AI to Design Formative Assessments for Multilingual Learners





Learning Intentions



By the end of this session, participants will:

- **understand** a simple *PROMPT framework*,
- **explore** free AI tools for formative assessments,
- **practice** revising prompts, and
- apply a quick **bias and cultural responsiveness check**.



Success Criteria

I will know I am successful when I can:

- Apply a simple PROMPT framework to design a formative assessment using free AI tools and utilize a quick **bias and cultural responsiveness check**.
- 
- 

What do we know?



I am new
to this.

I have
explored
it.

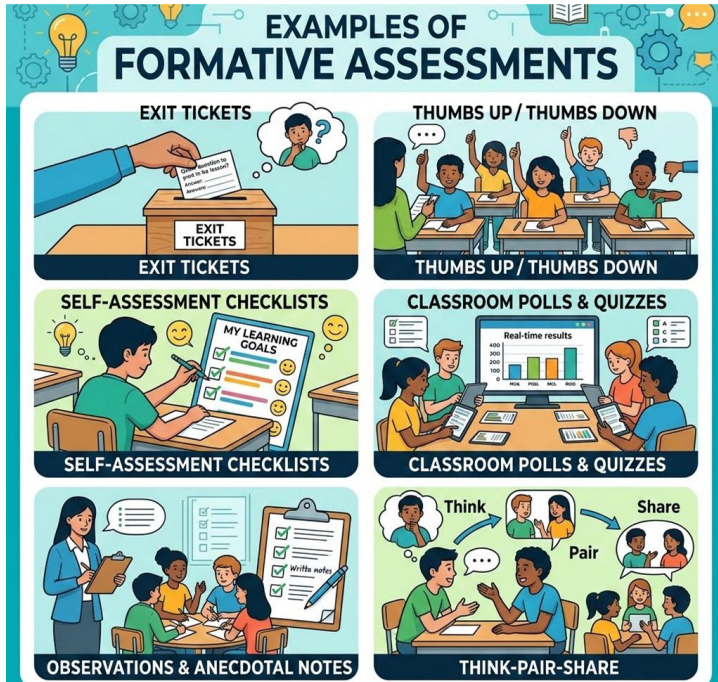
I know
some
things.

I can
share.

I can
teach it.

1. How much do you know about AI?
2. How much do you use AI when planning instruction?

Examples of Assessments



Formative Assessments

- Low-stakes
- Track student understanding
- Monitor learning
- Planned & deliberate
- On-going process
- Can occur **anytime**



It's All in the Prompt: Search vs. AI in Lesson Design



SEARCH ENGINE

Best for: FINDING



What you get: Links to websites, articles, PDFs, lesson plans



You'll need to: Sort through multiple sources, evaluate quality & accuracy, adapt materials for your students



Best for: Research, background knowledge, finding vetted, existing materials



Think: "What already exists?"

FIND
VS.
CREATE

AI TOOLS

Best for: CREATING



What you get: Original, customized content in seconds



You'll need to: Write clear, specific prompts, review for accuracy, adjust for your learners



Best for: Exit tickets, formative assessments, differentiation, sentence frames, language supports, examples



Think: "What do I need to generate?"

START HERE: 5 QUICK QUESTIONS



1. What do I want students to learn and be able to do?



2. What language will students need to demonstrate understanding?



3. How will I quickly check for understanding?



4. How can I differentiate this for varying proficiency levels?



5. What kind of prompt would generate the assessment or task I need?

★ **REMEMBER:** You are the teacher. AI is the tool. Your expertise makes the difference. ♥

Why Prompting Matters:

AI is only as good as the prompt.



Weak Prompt

✦ “Make a quiz about ecosystems.”

Strong Prompt

“Create a 5-question multiple-choice formative assessment on ecosystems for 4th grade multilingual learners at intermediate proficiency (WIDA 3–4). Include visuals and simple sentence structures.”





01 PROMPT Framework





Purpose



Define the *Purpose*.

What are you creating?

Be clear about the task.





Role



Define the *Role*.


Who is the AI acting as?

(e.g., ELD teacher, instructional coach, 4th grade teacher)






Purpose & Role



Example move: "Act as an elementary ELD teacher and create a 5-question formative check on fractions."

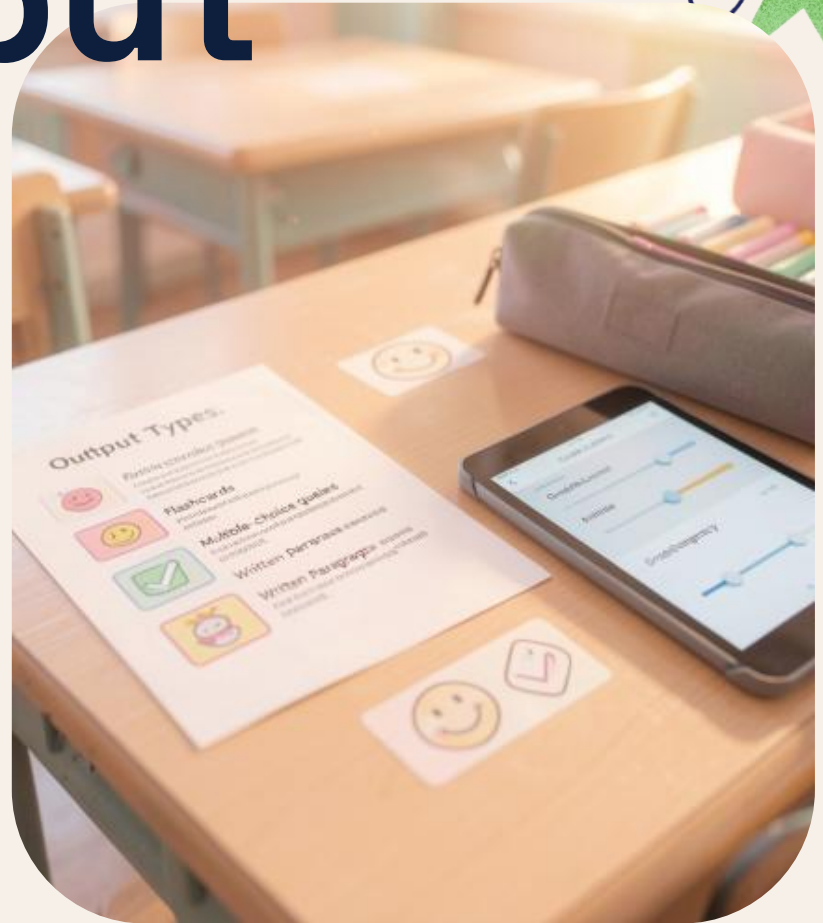




Output

What format do you
want?

State the desired *Output*:
format, sentence stems,
number of items, item
types, and visuals





Multilingual Supports



What language supports are needed?

Specify language level, scaffolds, and accessible language.

* Request sentence frames, simplified vocabulary, visuals, and translation notes.





Parameters



Set Parameters: grade,
proficiency level,
scaffolds, number of
questions





Tone & Equity



How should it sound and who should it reflect?

(e.g., culturally responsive, bias-aware, inclusive of diverse experiences)





Key Principles of AI Bias

- AI reflects human input.
- ✦ • Bias can be invisible.
- Equity matters in design and use.

Common Misconceptions

- AI is neutral or objective.
- Bias only matters in big tech or policy issues.
- As long as it works for most students, it's fine.



Example using the PROMPT Framework



"Act as an ELD teacher. Create a 5-question formative assessment on fractions for 5th grade multilingual learners at WIDA level 3. Include sentence stems, visuals, and multiple-choice options. Ensure the content is culturally inclusive and uses clear, simple language."

ChatGPT response

Gemini response

02

AI Tools & Practice



Free Tools Overview



Canva



Diffit
For Teachers

◆ Gemini

MAGiCSCHOOL®

Curipod



Quick Comparison: “What should I use this for?”

Differentiated quizzes or exit tickets?

→ **ChatGPT or Google Gemini**

(especially for modifying by proficiency level, language supports, or standards)

Fast and teacher-specific?

→ **MagicSchool**

(prebuilt tools for formative checks, accommodations, and instructional planning)

Engagement during instruction?

→ **Curipod**

(real-time polls, discussion prompts, and participation checks)

Visuals or student-friendly design?

→ **Canva AI**

(create picture-supported assessments, vocabulary visuals, culturally responsive examples)

Example: Same Goal, Different Tool

Goal: Create a 3rd-grade science formative assessment on plant life cycles for multilingual learners.

ChatGPT

“Create a 5-question formative assessment on plant life cycles for 3rd grade multilingual learners at WIDA 2–3. Include visuals suggestions, sentence stems, and simple vocabulary.”

MagicSchool

Use the **Assessment Generator** or **Checks for Understanding** template.

Curipod

Create a live lesson with:

- quick poll
- drawing response
- open-ended reflection

Canva AI

Design a picture-supported matching activity or labeled diagram with visuals.

Gemini

Generate differentiated question sets and export to Google Docs/Forms.

A Note about Privacy

Key Privacy Questions:

- What student information can be entered?
- How is data stored and used?
- Does the tool comply with school/district policies (FERPA, COPPA)?

“Rule of Thumb” Checklist:

- ✓ Can I remove names and identifying details?
- ✓ Would I be comfortable if this was public?
- ✓ Does my district approve this tool?
- ✓ Am I entering student data or just content?

DO NOT paste into free AI tools:

- Student names or ID numbers
- Grades or assessment data tied to a student
- IEP/504 information & Behavior reports
- Emails or family information
- Identifiable student writing without consent

Lowest-Risk Formative Uses:

- Creating exit tickets & quiz questions
- Generating rubrics
- Differentiating by level (without names)
- Creating sentence stems & scaffolds
- Designing visual supports

light
bulb

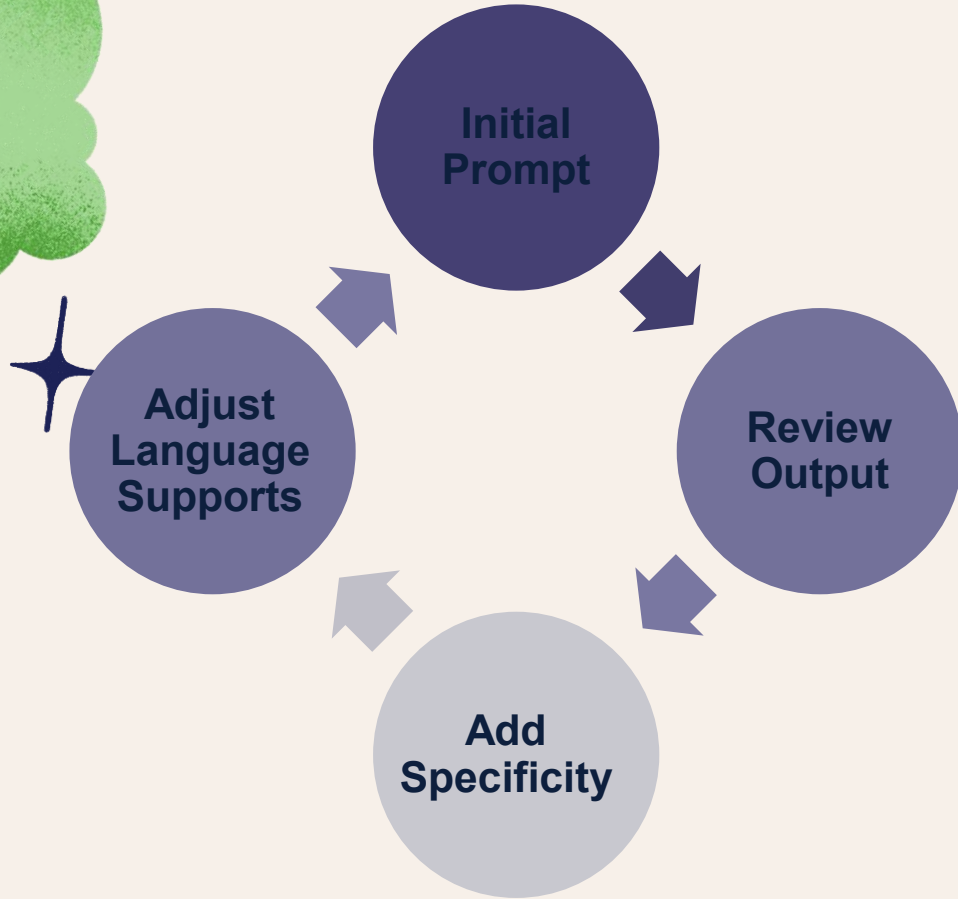
**AI is the starting
point—
not the final product.**



Interactive Practice

1. Choose an AI tool.
2. Type in this prompt:
Create a formative assessment on habitats.
3. Revise the prompt using the PROMPT framework.

Revising Prompts—Iteration is the Key!



Example Revision Moves:

- “Add sentence frames”
- “Simplify vocabulary”
- “Include images or descriptions of visuals”
- “Make distractors more realistic”

Bias & Cultural Review



1. REPRESENTATION



2. ACCESSIBILITY



3. CULTURAL
RELEVANCE



4. HIDDEN BIAS



5. STUDENT VOICE
& AGENCY

A few more examples...

Make a quiz about life cycles.

REVISED: Act as an experienced ELD teacher and curriculum designer. Create a culturally inclusive formative assessment about plant life cycles for 2nd-grade multilingual learners at WIDA proficiency levels 3–4 (Developing–Expanding).

Requirements:


- Include a **simple blank plant life cycle diagram** with labels removed for students to complete using grade-appropriate vocabulary.
- Include a **word bank** with key vocabulary (e.g., seed, sprout, roots, stem, flower, grow, sunlight, water).
- Include a **short constructed response section** where students explain the plant life cycle using transition words such as **First, Second, Third, Next, Finally**.
- Provide **sentence frames** to support multilingual learners (e.g., *First, the plant _____. Next, it _____.*).
- Use **clear, student-friendly language** appropriate for 2nd grade and WIDA levels 3–4.
- Ensure examples, visuals, and language are **culturally inclusive and accessible** to students from diverse backgrounds.
- Include a **teacher answer key** and a brief explanation of how the assessment supports language development.

A few more examples...



Make 10 questions about American History.

REVISED: Act as an ELD teacher. Create a 6-question formative assessment on the causes of the American Revolution for 8th grade multilingual learners (WIDA level 3–4). Include multiple-choice questions and 1 open-ended question with sentence frames. Use diverse perspectives and culturally inclusive examples.



Conclusions

AI doesn't replace **teacher expertise**—it **amplifies** it. The prompt is where you can use and show your expertise.



Learning Intentions




By the end of this session, participants will:

- **understand** a simple *PROMPT framework*,
- **explore** free AI tools for formative assessments,
- **practice** revising prompts, and
- apply a quick **bias and cultural responsiveness check**.



Success Criteria

I will know I am successful when I can:

- Apply a simple PROMPT framework to design a formative assessment using free AI tools and utilize a quick **bias and cultural responsiveness check**.
- 
- 

Thanks!

Want to collaborate or have questions??
Email: dskelly@parkwayschools.net



Your Feedback
is Important!



Please take a
moment to fill out this
session survey.

CREDITS: This presentation template was created by [Slidesgo](#), and includes icons by [Flaticon](#), and infographics & images by [Freepik](#)

Your Feedback is Important!

Please take a moment to fill out this session survey.



Resources



AI Prompts for ELL/ESL

www.controlaltachieve.com/ai

Control Alt Achieve

<https://www.controlaltachieve.com/2025/09/promptember.html>

AI Tools Comparison & Policy

AI Tool Comparison, version 2

Bias Checklist

Teacher Privacy

Thought Catcher

