



OUR STORIES, OUR SHELVES

MLA • DLA Conference 2026

Don't Miss!



50/50 RAFFLE

Tickets are **\$1** each and can be purchased from **Conni Strittmatter** or **David Dahl!** The winner takes home half the pot.



PUB QUIZ

Thursday, May 7
8:00 – 10:00 p.m.
Choptank Ballroom



SILENT AUCTION

Visit the Silent Auction in the exhibitor hall to place your bids **before 10 a.m. on Friday, May 8th**.



KARAOKE

Thursday, May 7
6:00 – 10:00 p.m.
Windjammer

Make Your Own Passive Programming BINGO BOARD

Directions:

1. Grab a BINGO Board or download a copy.
1. Fill your board with the names of the bay creatures listed to the right.
2. Cross out the creatures as you see them in the presentation.
3. Shout BINGO when you have a row or column.

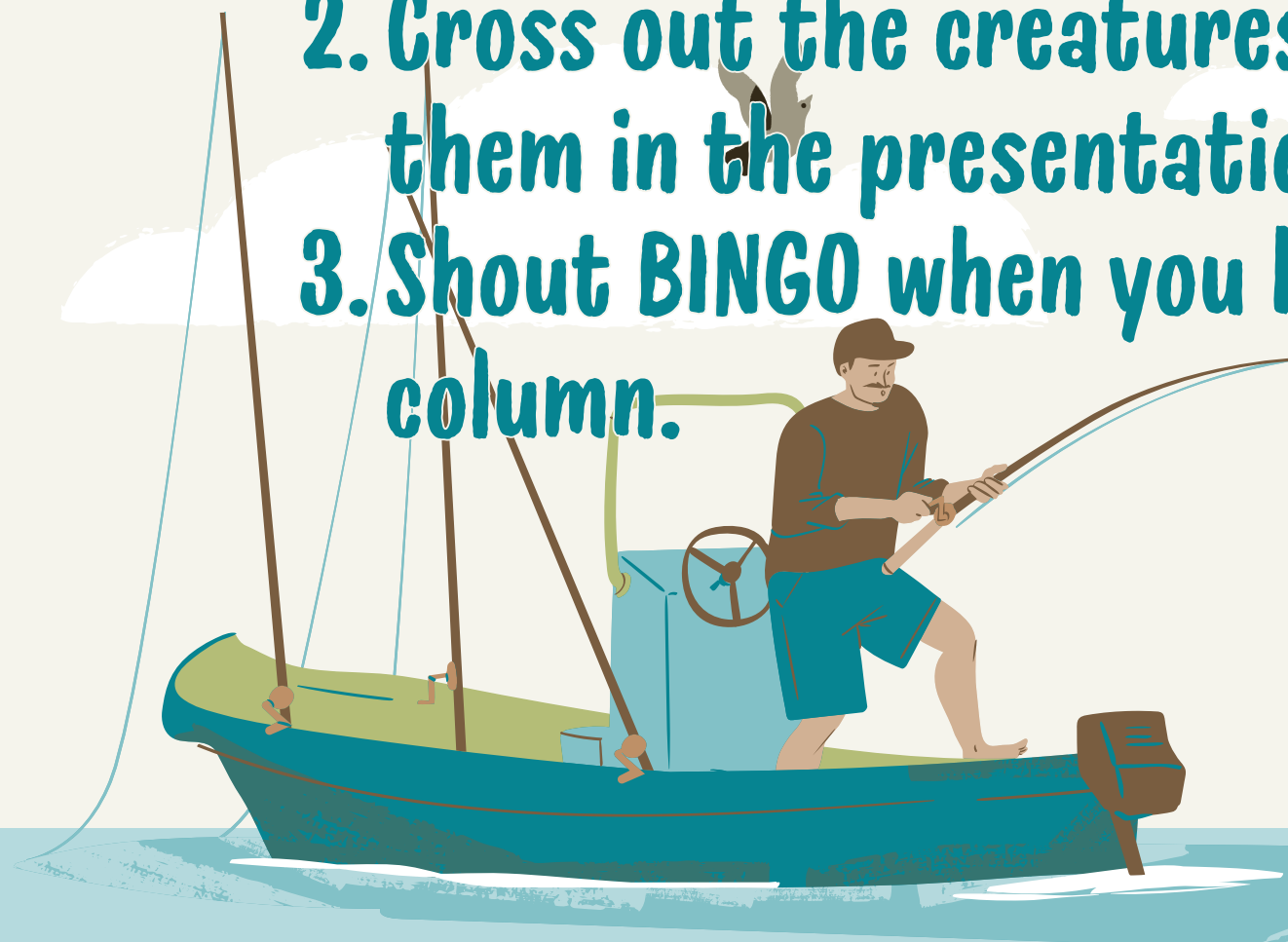


Lined Seahorse
Black Sea Bass
Feather Blenny
Mangrove Snapper
Hermit Crabs
Mud Crab
Clam
Grass Shrimp
Sand Shrimp

Sea Robin
Periwinkle
Mud Snail
Kingfish
Northern Puffer
Oyster
Gobi
Mummichog
Oyster Drill

Shorelines on the SHELVES

Bringing the Maryland Coastal Bays to
Stephen Decatur High School's Library





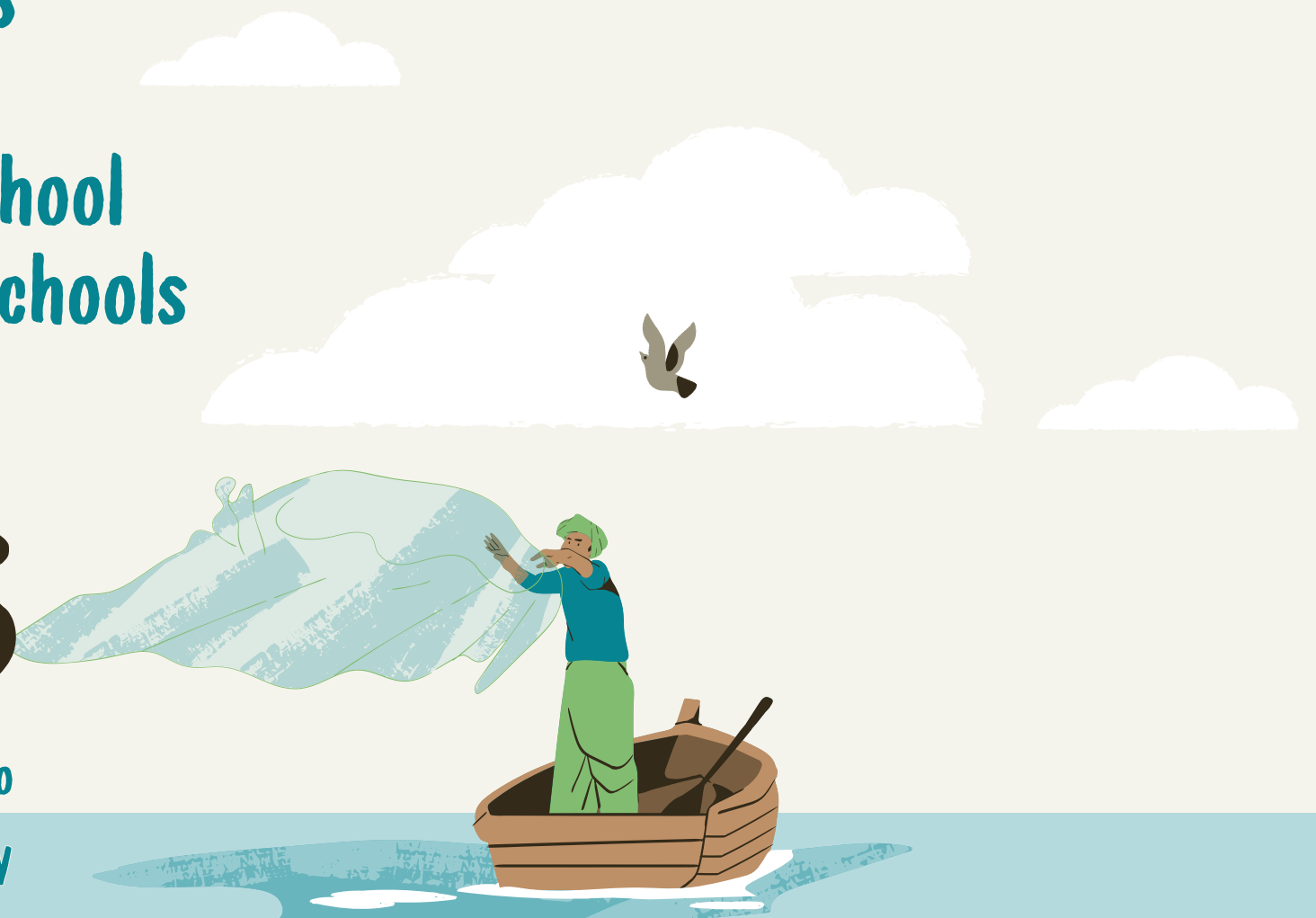
Connecting Patrons
with the

LOCAL ENVIRONMENT

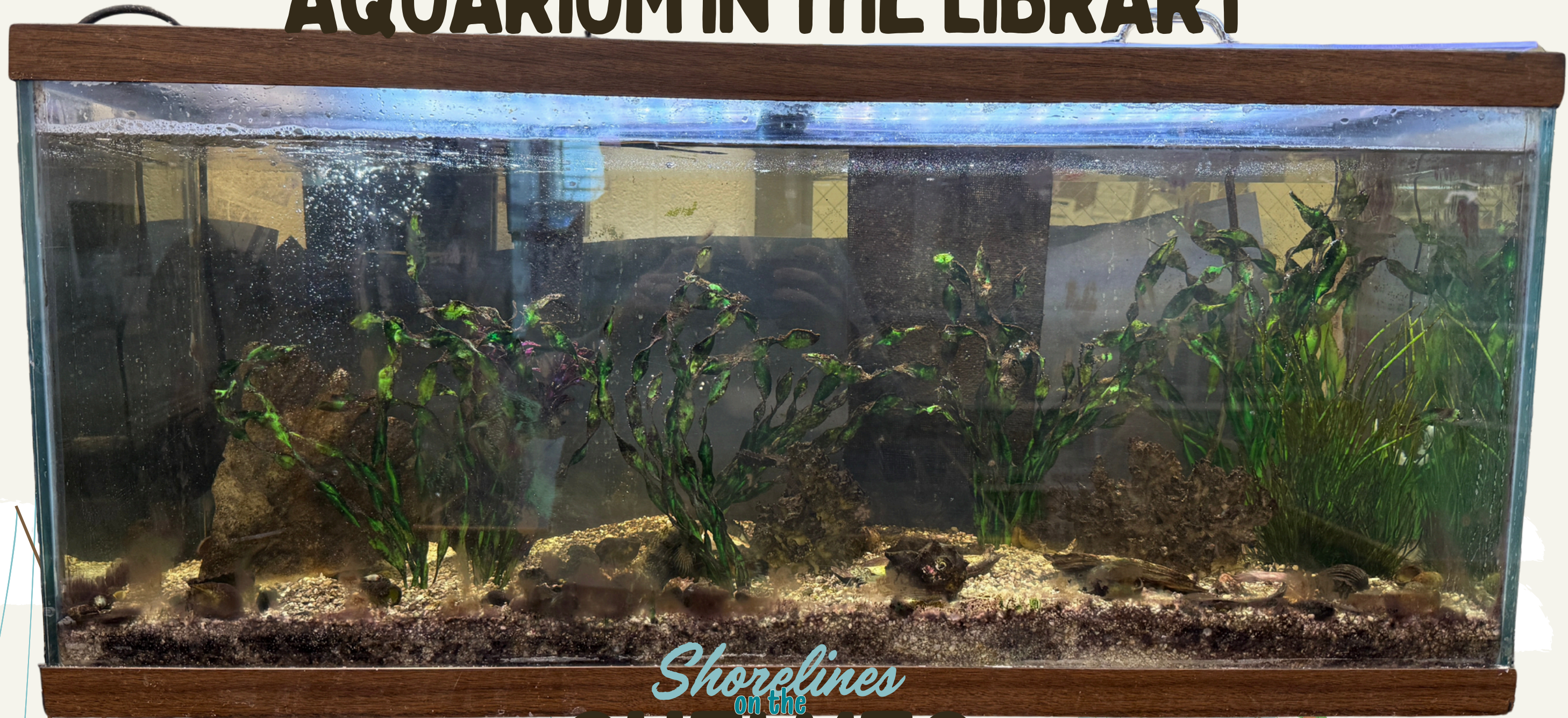
Brittany Tignor, MLIS
School Librarian
Stephen Decatur High School
Worcester County Public Schools

Shorelines
on the
SHELVES

Bringing the Maryland Coastal Bays to
Stephen Decatur High School's Library



Introducing
the Stephen Decatur High School
AQUARIUM IN THE LIBRARY

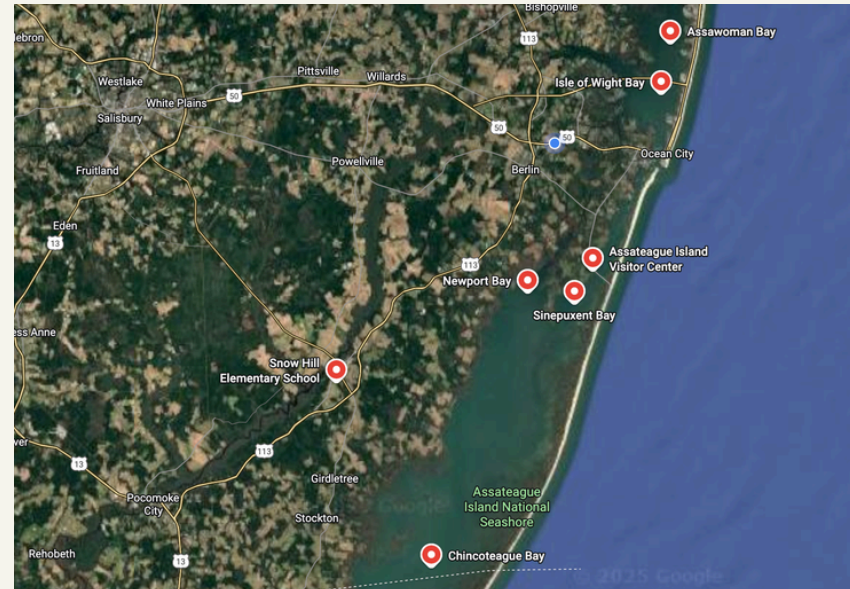
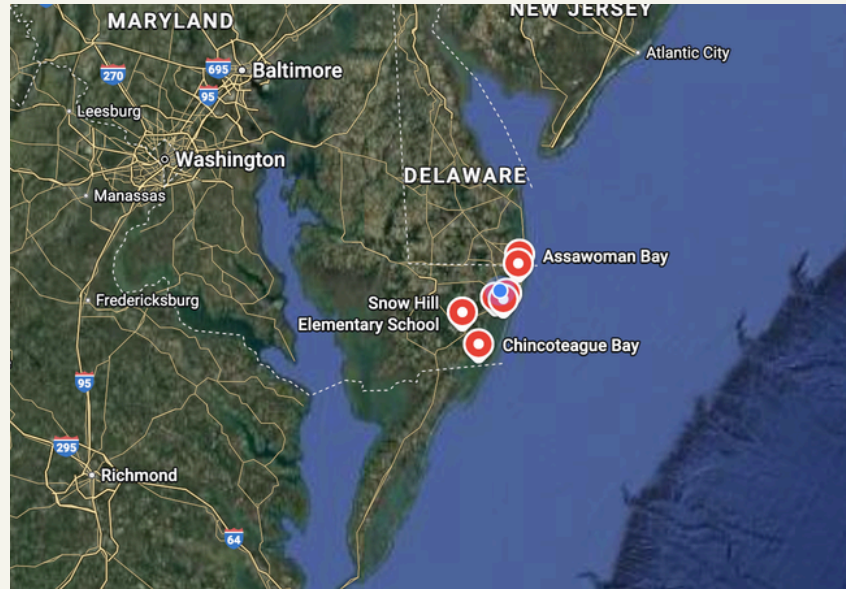


Shorelines
on the
SHELVES

Bringing the Maryland Coastal Bays to
Stephen Decatur High School's Library



Introducing the Stephen Decatur High School AQUARIUM IN THE LIBRARY



Maryland Coastal Bays Aquarium

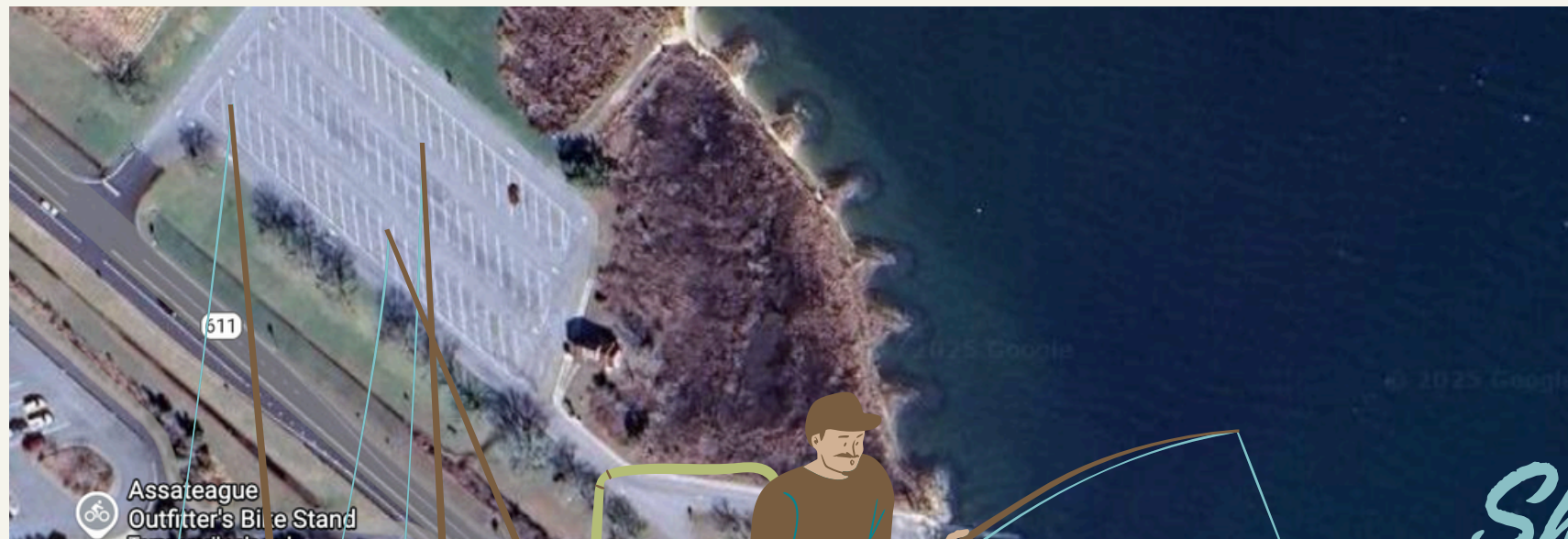
Estuarine or Brackish Water

Wide range of temperatures

Wide range of salinity

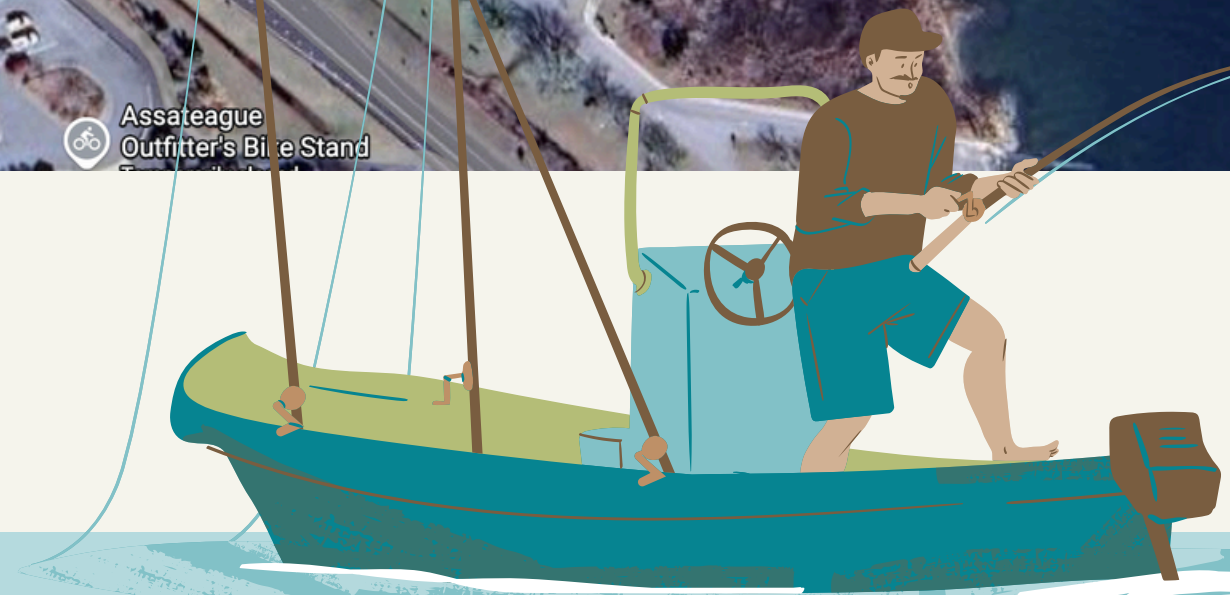
Crushed Coral Bottom

Variety of Structures

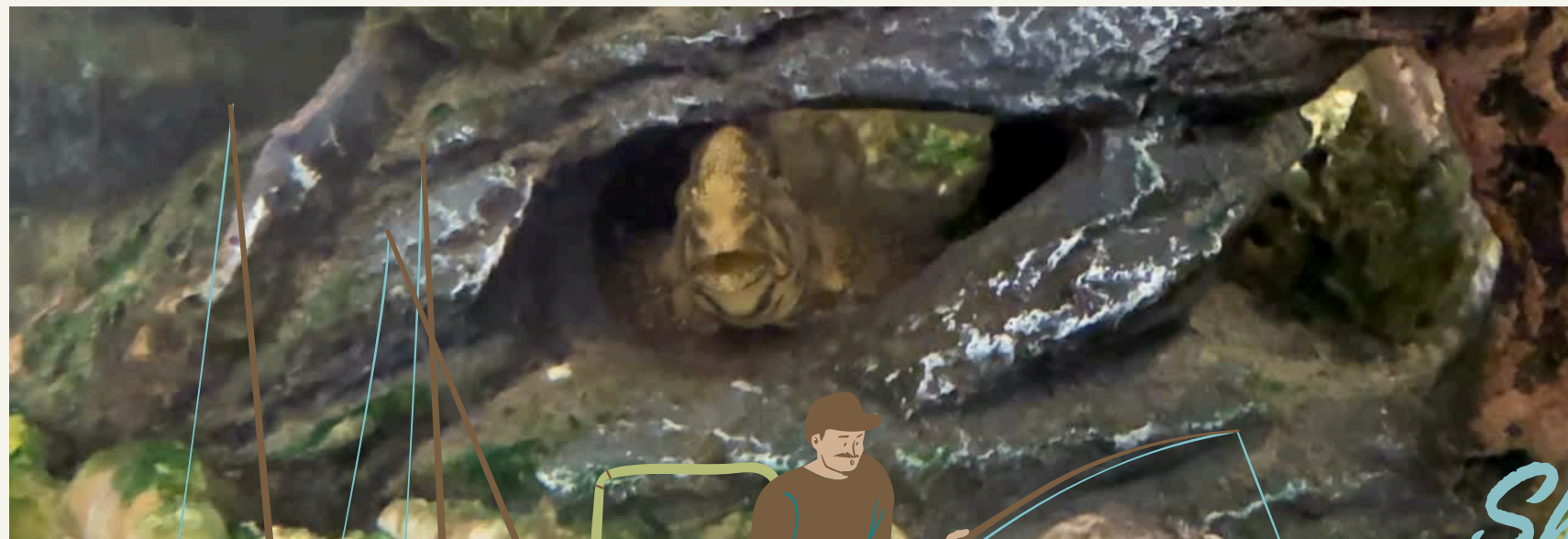


Shorelines on the SHELVES

Bringing the Maryland Coastal Bays to
Stephen Decatur High School's Library



Introducing
the Stephen Decatur High School
AQUARIUM IN THE LIBRARY



Lined Seahorse
Black Sea Bass
Feather Blenny
Mangrove Snapper
Hermit Crabs
Mud Crab
Clam
Grass Shrimp
Sand Shrimp

Sea Robin
Periwinkle
Mud Snail
Kingfish
Northern Puffer
Oyster
Gobi
Mummichog
~~Oyster Drill~~

Shorelines
on the
SHELVES

Bringing the Maryland Coastal Bays to
Stephen Decatur High School's Library



Benefits for STUDENTS & STAFF



Increase knowledge & understanding

Community Partnerships

Classroom Connections

Mental Health

Environmental Stewardship

Another reason to visit the library

Shorelines on the SHELVES

Bringing the Maryland Coastal Bays to
Stephen Decatur High School's Library




Designing effective PROGRAMMING

Brittany Hulme-Tignor

Did you know?
Maryland has

5 COASTAL BAYS

- Assawoman
- Isle of Wight
- Sinepuxent
- Newport
- Chincoteague



Shorelines on the SHELVES
Bringing the Maryland Coastal Bays to Stephen Decatur High School's Library

According to Maryland Coastal Bays Program, "the Maryland Coastal Bays [is] one of the more diverse estuaries on the eastern seaboard. There are a total of five coastal bays, 71,000 acres of water, 248 miles of shoreline, and nearly 35,000 acres of wetlands. Living within its boundaries is a variety of wildlife, including 360 different types of birds as well as more than 108 rare, endangered, and threatened species."

Learn more about the 5 bays!
mdcoastalbays.org
The Coastal Bays - Maryland Coastal Bays Program



Brittany Hulme-Tignor

Shorelines on the SHELVES

Bringing the Maryland Coastal Bays to Stephen Decatur High School's Library

Water Quality Testing

What Do We Test?

- Temperature:** Keeps the climate stable for marine life. Big changes can stress fish and corals.
- Salinity:** Measures salt levels. Marine life needs the right salt-to-water balance to survive.
- pH Level:** Shows if water is acidic or alkaline. Most saltwater tanks need a pH between 8.1-8.4.
- Ammonia (NH₃):** Toxic waste from fish. Should always be zero as even small amounts are harmful.
- Nitrites (NO₂⁻):** Also toxic. A sign the tank's nitrogen cycle isn't complete. Keep at zero.
- Nitrates (NO₃⁻):** Less toxic, but high levels can cause algae blooms. Keep them low.

Why Is Testing Important?
Regular testing helps:

- Keep fish healthy
- Prevent algae blooms
- Catch problems early
- Avoid equipment failures
- Make timely fixes like water changes

30 Gallon Tank



50 Gallon Tank



Brittany Hulme-Tignor

Shorelines on the SHELVES

Bringing the Maryland Coastal Bays to Stephen Decatur High School's Library




Challenges of SETTING UP & MAINTAINING



Limited Information

Getting Water

Algae & Tank Cleaning

Life Cycles

Feeding Schedule

Making fish happy



Shorelines on the SHELVES

Bringing the Maryland Coastal Bays to
Stephen Decatur High School's Library



What do you need to **GET STARTED**



Tank & Stand
Substrate
Filter & Extras
Lights
Bubbler
Thermometer
Small Pump & Tubing
Circulation Pump

Plants/Wood/Shells
Saltwater Test Kit
Water & Containers
Big Pump
Partnerships
Creatures
Food

Shorelines on the **SHELVES**

Bringing the Maryland Coastal Bays to
Stephen Decatur High School's Library



Resources and PARTNERSHIPS



Me

Maryland Coastal Bays

Department of Natural Resources

Virginia Institute of Marine Science

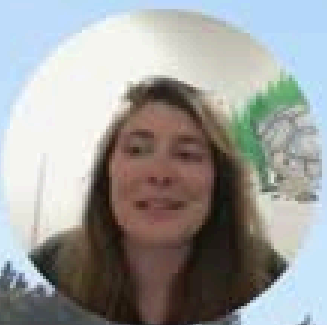
Assateague National Seashore

Shorelines
on the
SHELVES

Bringing the Maryland Coastal Bays to
Stephen Decatur High School's Library



MCBP MINI GRANT



Pro Tips for DESIGNING YOUR PROGRAM



Keep it local

Don't start too small or too big

Build community

Name your fish

Have water on standby



Shorelines
on the
SHELVES

Bringing the Maryland Coastal Bays to
Stephen Decatur High School's Library

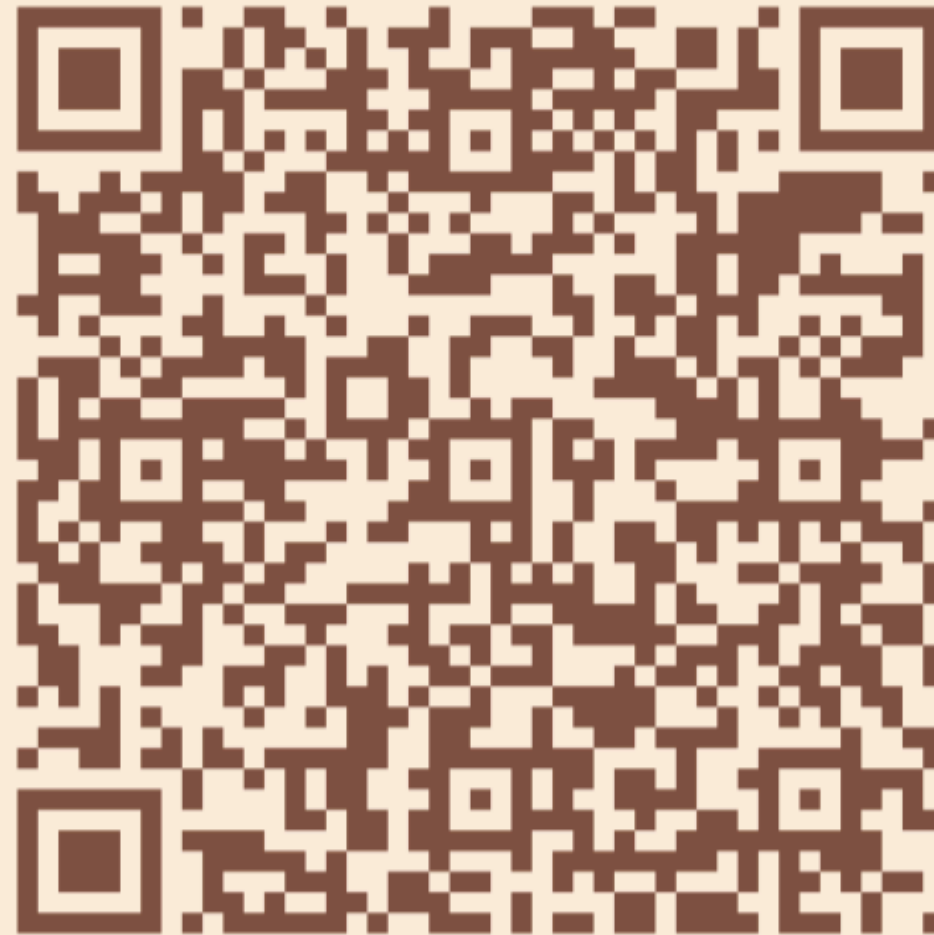


Thank you!

CONTACT INFO

Brittany Tignor, MLIS
School Librarian
Stephen Decatur High School
Worcester County Public Schools
bdhulme-tignor@worcesterk12.org

**Please take a moment to
complete the program survey.**



SCAN ME!