



OUR STORIES, OUR SHELVES

MLA • DLA Conference 2026

Don't Miss!



50/50 RAFFLE

Tickets are **\$1** each and can be purchased from **Conni Strittmatter** or **David Dahl!** The winner takes home half the pot.



PUB QUIZ

Thursday, May 7
8:00 – 10:00 p.m.
Choptank Ballroom



SILENT AUCTION

Visit the Silent Auction in the exhibitor hall to place your bids **before 10:45 a.m. on Friday, May 8th.**



KARAOKE

Thursday, May 7
8:00 – 11:00 p.m.
Windjammer

SHARE YOUR STORY WITH PRIDE:

BUILDING A COMMUNITY DRIVEN
ART SHOW AT YOUR LIBRARY



MARGERY
BAYNE
(SHE/HER)

AACPL

OBJECTIVES

Identify

Identify key steps in planning and executing a community-driven Pride art show, from art collection to exhibit management.

Develop

Develop strategies to build partnerships with local organizations, library branches, and community groups to strengthen participation and outreach.

Design

Design inclusive submission processes that prioritize accessibility, privacy, and safety for LGBTQ+ participants.

INTRODUCING MYSELF



Margery Bayne (she/her)

Librarian at Odenton Library of AACPL

Currently preparing our 4th Annual
"Share Your Story With Pride" Art
Show

DEFINITION TIME

- Pride art
 - Art created by people in the LGBTQ+ community celebrating and exploring themselves and their identity
- Community-driven
 - Art show made up of individual art submission by a community of artists (as opposed to an art show of one artist's work)
- Art Show
 - Art Reception, Gallery Hours, Prolonged Display Period



BACKGROUND OF THE PRIDE ART SHOW, PART I

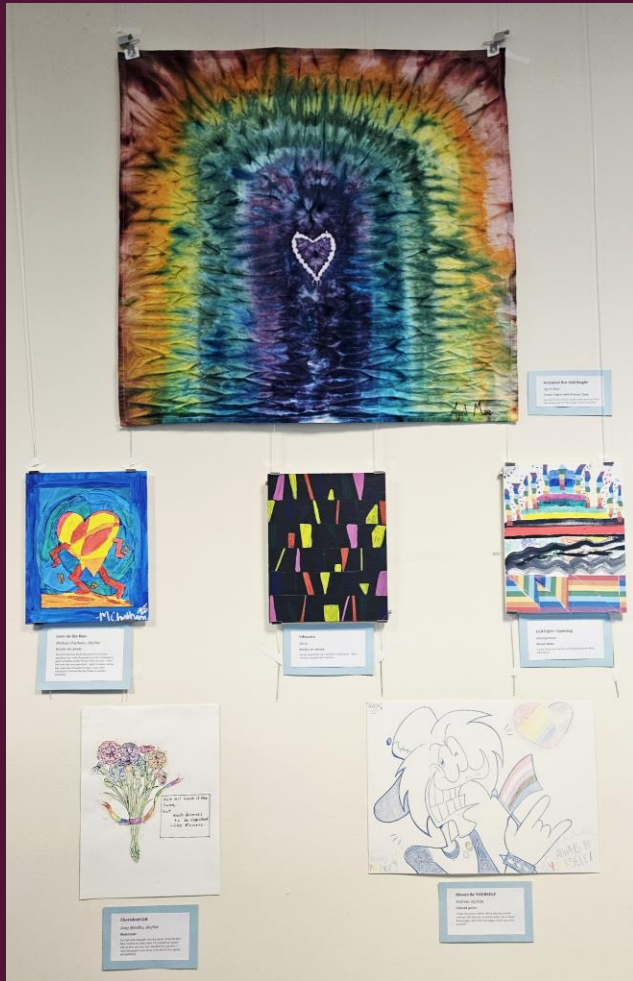
- Started in 2022-23 with an idea to:
 - Celebrate queer joy and community via art
 - Decorate our space for summer
 - Make a clear statement of inclusivity
- In three years...
 - Built new community partnerships
 - Displayed art from over 50 artists
 - Had multiple collaborate art projects
 - Have had hundreds of people attend our art receptions, gallery hours, and tie-in events

"As a parent of two teenagers/young adults in the lgbtqia+ community... I am grateful that the library has programs such as the share your story with pride art show. It is helpful for them to know that there are organizations that will continue to embrace inclusion even though there is significant pressure for them to cancel such programs."

BACKGROUND OF THE PRIDE ART SHOW, PART 2

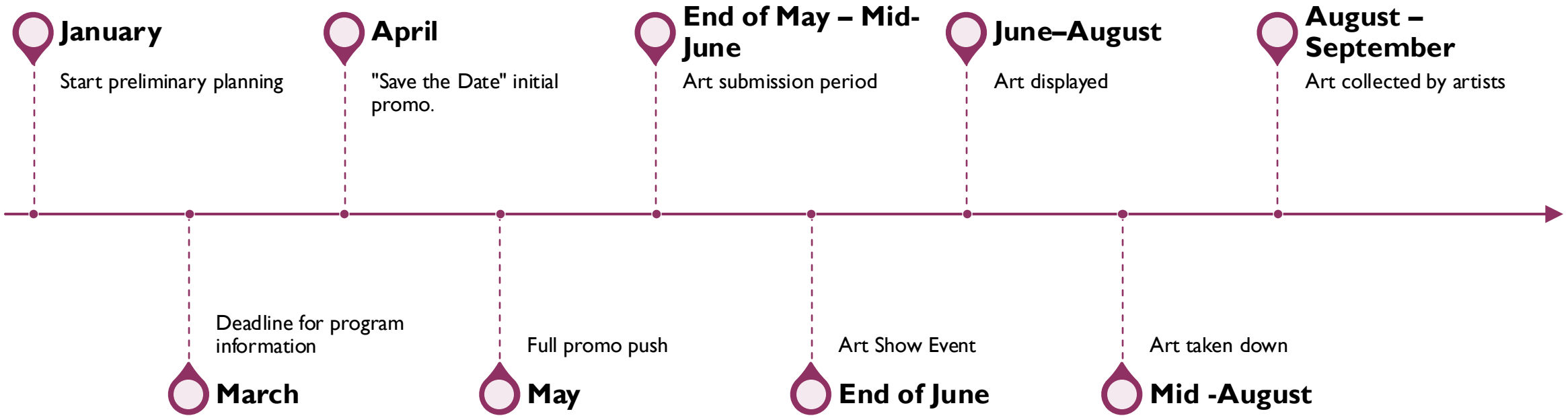


- But... It didn't start out that way
- What we did: Promote through traditional library avenues ONLY
- Result... it kinda flopped
 - Only one community art submission
 - All other art was from staff or made via preschools/kids from library programs
- For year 2... we had a lot to learn



CONTEXT

- Odenton Library is BIG
- Art in meeting room, not public space
- Built in "rails" system for art display
- What it looked like for us, it might not look like for you

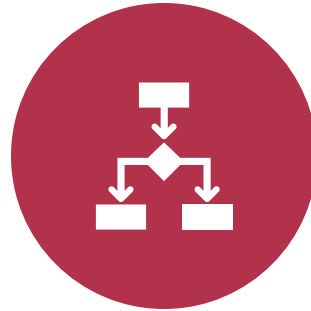


PLANNING TIMELINE

CHALLENGES



PROGRAM "WITH
HOMEWORK"



MULTIPLE-STEP PROGRAM

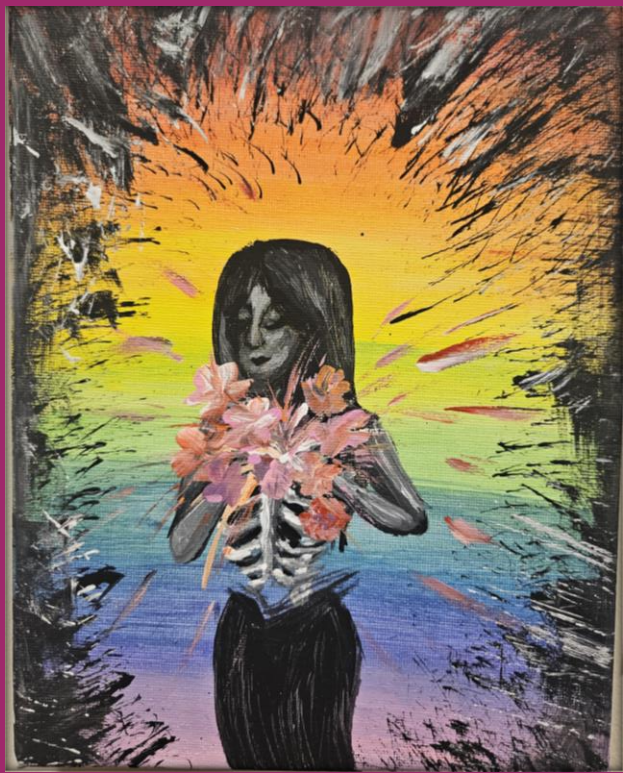


REACHING A SPECIFIC
COMMUNITY



GO BEYOND AND
OUTSIDE OF OUR TYPICAL
PROMOTION STRATEGIES

PLANNING: OVERVIEW



Start Early

Put together a small committee or team

Do the backwards math for your library system to determine best time to start

First year? Start earlier!

PLANNING: PICKING DATES

Art Reception

- All other dates fluctuate around this
- Not conflict with other big Pride events

Submission period

- Longer periods are more accessible
- Leave room at the end for art set up

Art Display Period

- Leave it up for summer
- Gallery Hours

PLANNING: BRANDING



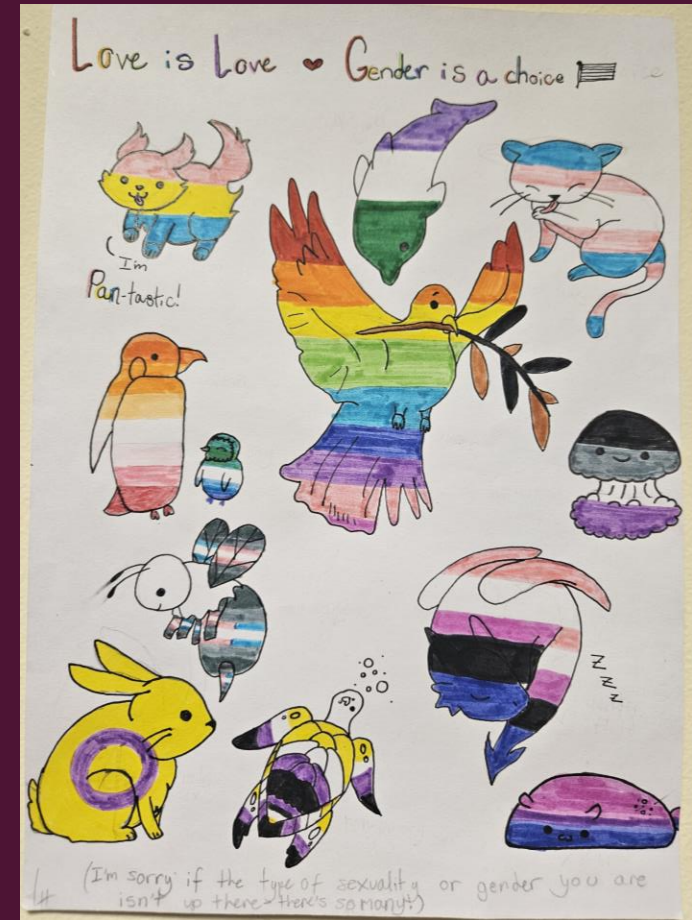
Pride Art Show -> Share Your Story With Pride Art Show



Logo



PARTNERSHIPS & PROMOTION





WAYS TO PARTNER

- Promotional partners
 - Enter it on their calendars
 - Send materials for active promotion
- Outreach Events
- Partnership Events

EXTERNAL PARTNERSHIPS & PROMOTIONS

High School GSAs

Community
College's
LGBTQ+ & art
groups

Annapolis Pride

Arts Councils &
Centers

Anne Arundel
Affirming Alliance

Kindness Grows
Here

INTERNAL PARTNERSHIPS AND PROMOTIONS

Partners

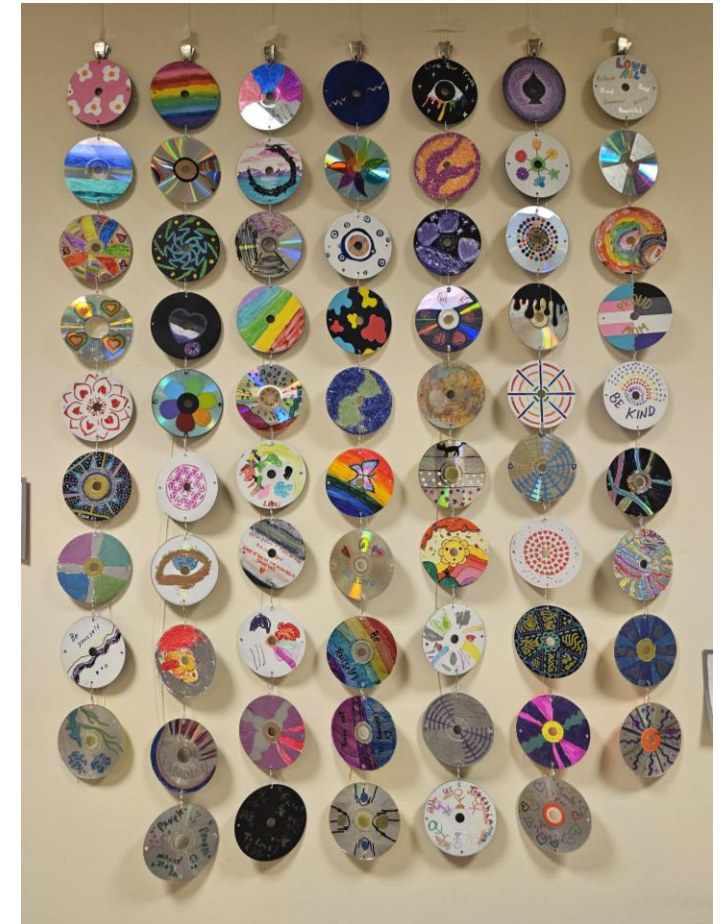
- Other branches
 - Art drop off locations
 - Specialized programs
- Centralized Programming Office
 - Connect to outside partners

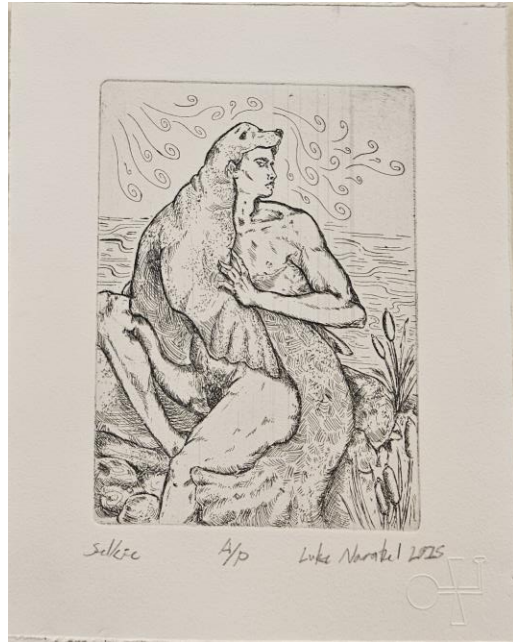
Promotions

- Other Pride Month programs
- LGBTQ+ recurring groups/clubs
- Writing Clubs
- Art Programs/clubs

PROGRAMS AS PROMOTION

- Art programs based on creating artwork for the event
 - Individual or community art
- Pros of community art projects
 - Participants willing to leave art at library
 - Inviting to folks who don't consider themselves artistic
 - Can be done as active and passive programming





INCLUSIVE & ACCESSIBLE SUBMISSION PROCESS



DISPLAY POLICIES: WHAT KIND OF ART?

- Start with your pre-existing policies
- Base it on your space
- Base it on your ability to display
- Write it in language that doesn't cause people to self-reject

Event Details

Show your Pride through art! Interested artists and crafters can submit their paintings, drawings, graphic designs, photography, collages, poetry/written word submissions, and handicrafts (anything that can be hung on the wall!) to the following library locations to be part of our "Share Your Story With Pride" Art Show:

WHO CAN SUBMIT?

- No one should have to be out to participate
- Don't assume

Submissions are open to people of all ages connected to the broad and inclusive umbrella of the LGBTQ+ community. Art can be displayed anonymously or under a pseudonym.



HOW TO SUBMIT

Year 1 -> at the Odenton Library

Year 2 -> at the Odenton Library & virtual submissions

Year 3 & 4 -> Odenton Library, virtual submissions, and 2 partner branches

EXHIBIT FORMS

- Separate legal contact information from display information
- Pseudonym & Anonymous display options
- Optional pronouns





EXHIBIT AUTHORIZATION

Date _____

Item description _____

Name of owner _____

Address _____

Street

City

State

Zip

Phone _____

Dates of display _____

Name of person assembling display _____

Print Name

I understand that the Anne Arundel County Public Library is not responsible for the loss or damage of exhibit items. I also agree to remove the exhibit item on or before the final display date.

Signature _____

Date _____

Share Your Story With Pride Art Show Submission Form

To display artwork, we need the artist's name and contact information on a confidential Exhibit Authorization; however, **we will display pieces anonymously or under a pseudonym upon request.** Please fill out the information below and sign the attached authorization to have your artwork displayed.

Artist's Name/Pronouns _____

Artwork Title _____

Artwork Medium _____

Phone number _____

Email address _____

Do you want your art returned? **Please Circle* YES/NO.

Please share how this piece represents your story.

Would you like your art and story shared with the community anonymously or under a pseudonym?

**Please Circle* YES/NO

Pseudonym: _____

Library Drop-Off Location: _____

CREATING THE EXHIBIT



ART SET UP

- Prepare
 - Book the room, book your schedule
 - Get supplies
 - Print online submissions
 - Make nameplates
- Give yourself time
 - Two day set up
- Don't do it solo
 - ...but don't have too many people helping at once



ART RECEPTION

- How can we make this a community event?
 - Deliberate timeslot
 - Refreshments
 - Interactive art project
 - "Artist" badge
 - Comfy chairs

GALLERY HOURS

Why?

- Additional exposure
- Additional time for artists and their support network to see the art

Promotion

- Promote throughout the process
- Promote to the artists

Alternative hours

- One soon after the event
- One on the weekend
- One "last chance" before exhibit is taken down

ART RETURN

- Plan a takedown date
 - Book your gallery space
 - Include in art submission paperwork
- Contact your artists
- Contact your artists again...and again... and again





Build buy in



Prepare talking points



Staff well



Doxing Prevention

HANDLING NEGATIVE FEEDBACK



FUTURE PLANNING & REFLECTIONS



PREPARING FOR NEXT YEAR



EMAIL SIGN UP LIST



PHOTOS



DEBRIEF MEETING

CONTINUING TO FOSTER THE LGBTQ+ COMMUNITY AT YOUR LIBRARY

- LGBTQ+ programs aren't just for Pride month
 - October is LGBTQ+ History Month
 - Queer people intersect with other identities
 - Recurring programs
- Design welcoming spaces
 - Displays, signage, pride flags
 - Use of pronouns and inclusive language

Thank you!

mbayne@aacpl.net

**Please take a moment to
complete the program survey.**



SCAN ME!



OUR STORIES, OUR SHELVES

MLA • DLA Conference 2026