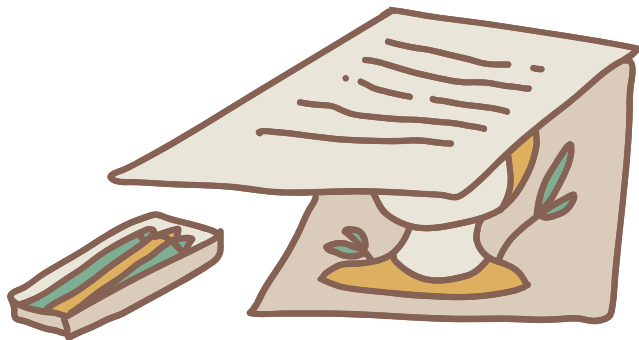


# TEACHING THE TEACHERS

Liz Odle and Brett Joneson



# Presenter Backgrounds



## **LIZ**

I've been teaching FCS for 10+ years and have always taught some form of child education. But the last 7 years I have been teaching Early Childhood Education

## **BRETT**

I've been a Social Studies teacher/administrator/coach at all levels for 30+ years. I retired 2 yrs ago and then came back to teach FCS, specifically Teacher Education.



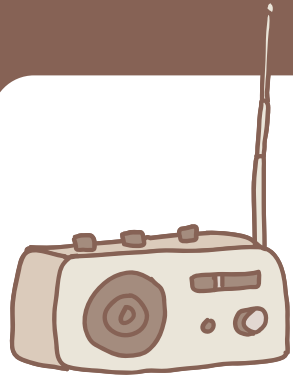
## Question...

**HOW MANY OF YOU WANTED TO BE TEACHERS GROWING UP?**

**HOW OFTEN WERE YOU IN THE CLASSROOM BEFORE YOU WERE IN COLLEGE... BEFORE YOU WERE STUDENT TEACHING?**

**WHAT DO YOU THINK HIGH SCHOOL STUDENTS THINK TEACHING IS VS WHAT IT REALLY IS?**





# What our Pathway looks like at North Platte High...



## **Lifespan Development**

The Entry level class for any student interested in working with children. Mostly Freshmen and Sophmores take this but open to all ages.

## **Child Development**

This class is the Early Childhood path 2<sup>nd</sup> class. In this class we do flour babies and then the final is running a 2 day preschool for 90 min. Students plan and run the preschool

---

## **Teaching as a Profession**

This class is the 2<sup>nd</sup> class in the Education and Training pathway. In this class we learn about the history of Education, Classroom management, Practice teaching classmates, and create bulletin boards. The final for this class is learning to write a lesson plan and observe and interview a classroom

# Finishing the Early Childhood Pathway

## **BEST PRACTICES IN EARLY CHILDHOOD**

Group adventures to day care and preschools. Observations and short teaching stints .. into longer teaching stints. 50/50 in classroom/outside the classroom.

Assignments of lesson plans, review of development milestones, Real Care Baby.

## **EARLY CHILDHOOD PRACTICUM**

Single adventures to early elementary classrooms.

Observations and team teaching ... into single teaching stints.

20/80 in classroom/outside the classroom. Portfolio of teaching experience, including lesson plans, teacher interview, and weekly diary.

# Finishing the Education and Training Pathway

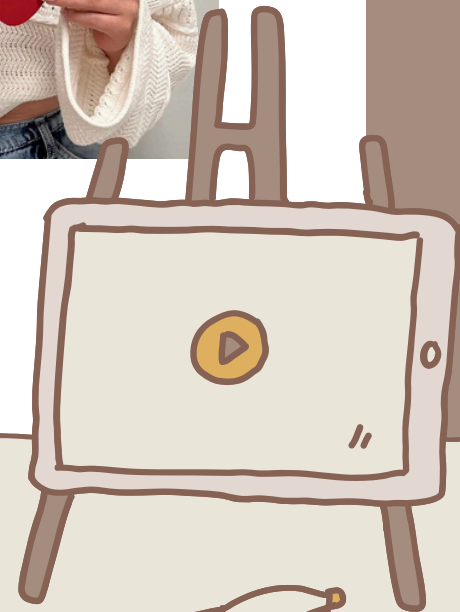
## **BEST PRACTICES IN EDUCATION & TRAINING**

Group observations to upper elementary, middle school, and high school. 50/50 in classroom/outside the classroom. More in depth lesson planning, working through scenarios. Assist and teach in the Resource 3 classroom and Transition House.

## **EDUCATION & TRAINING PRACTICUM**

At least 3 single teaching experiences. Observations and assist teacher in classroom. 30/70 in classroom/outside the classroom. Portfolio including lesson plans, observations, resume, reflective essay, teaching philosophy, teacher interview and evaluations, weekly reflection and daily journal.

# How We Celebrate...



# What is North Platte like...

- ★ SMALL CITY
- ★ MEDIUM DISTRICT
- ★ LARGE CLASS SIZES
- ★ LOCAL ENOUGH TO GET AWAY FROM PEERS
- ★ GREAT COMMUNITY SUPPORT

# Why do people take our classes....

- Grow our Own
  - Scholarships for Educators in our Districts
  - Scholarships for Educators through other colleges
- Students want to work with kids but not necessarily in education
- Finish a Pathway
- Like our classrooms/teacher
- Curious about teaching
- They like the idea of leaving the school building part of the day
- Join our hall of fame

- **Q & A**
- **SHARE MATERIALS**
- **SHARE WITH US, OR ASK US QUESTIONS LATER... HERE ARE OUR EMAILS**
  - **EODLE@NPPSD.ORG**
  - **BJONESON@NPPSD.ORG**