



# **Getting Around in the 'Burbs: The Latest in Transportation Options in Washington County**

2026 Oregon Active Transportation Summit

[Jeff Pazdalski](#)

Executive Director,  
Westside Transportation Alliance

[Caitlin Ahearn](#)

Program Director,  
Westside Transportation Alliance

[John Mira](#)

Planning Supervisor,  
Ride Connection

[Gregg Snyder](#)

Transportation Planning Supervisor,  
City of Hillsboro

[Nic Westendorf](#)

Deputy Public Works Director,  
City of Tualatin

[Dyami Valentine](#)

Transportation Planning Section Manager,  
Washington County



- Nonprofit founded in 1997
- Support Washington County businesses and residents
- Higher level of customization and programs for members
- Focus on programs and activities aimed at influencing travel behavior

## Westside Transportation

Alliance (WTA) delivers customized programs and services in partnership with employers and public agencies to increase transportation options usage in Washington County and the region.



Westside  
Transportation  
Alliance

# WESTSIDE



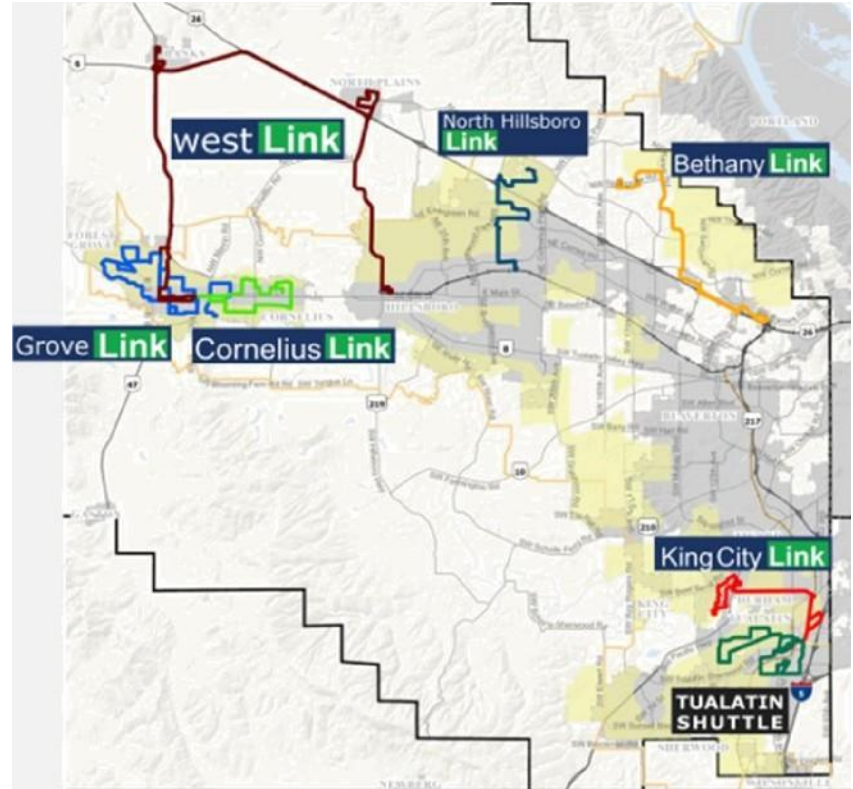
- Lending library style program
- 37 e-bikes s scooters
- Inclusive fleet: adaptive s cargo
- Funded into 2028
  
- For anyone who lives or works in Washington County
  - Free for Priority Commuters
- Borrow for a month, renew up to three months total
  - Based on availability

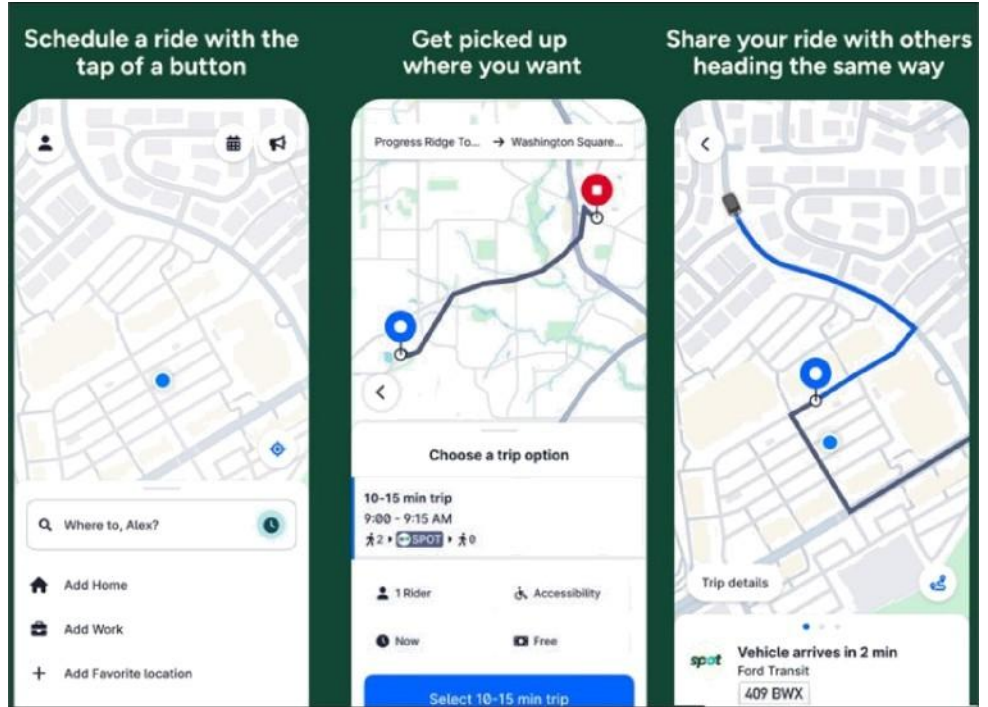
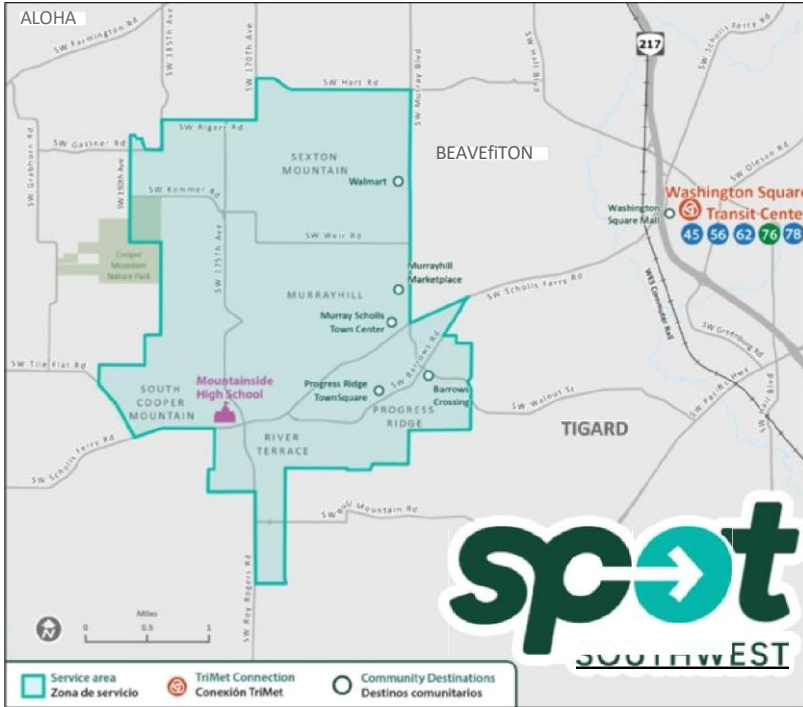


Westside  
Transportation  
Alliance

## CONNECTION

- Nonprofit founded in 1988
- Fills transportation gaps for older adults, people with disabilities, and the broader public
- Contracts with Washington County to provide public transit
  - First-and-last mile travel
  - Rural pFOgral+15



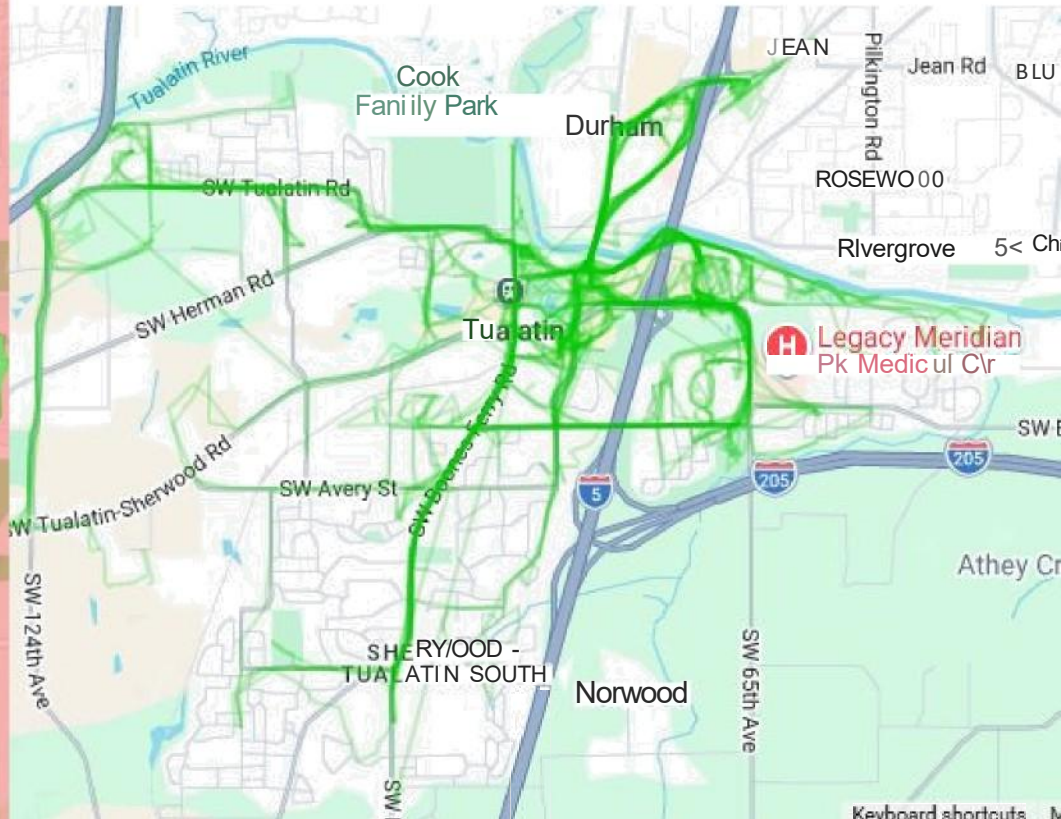
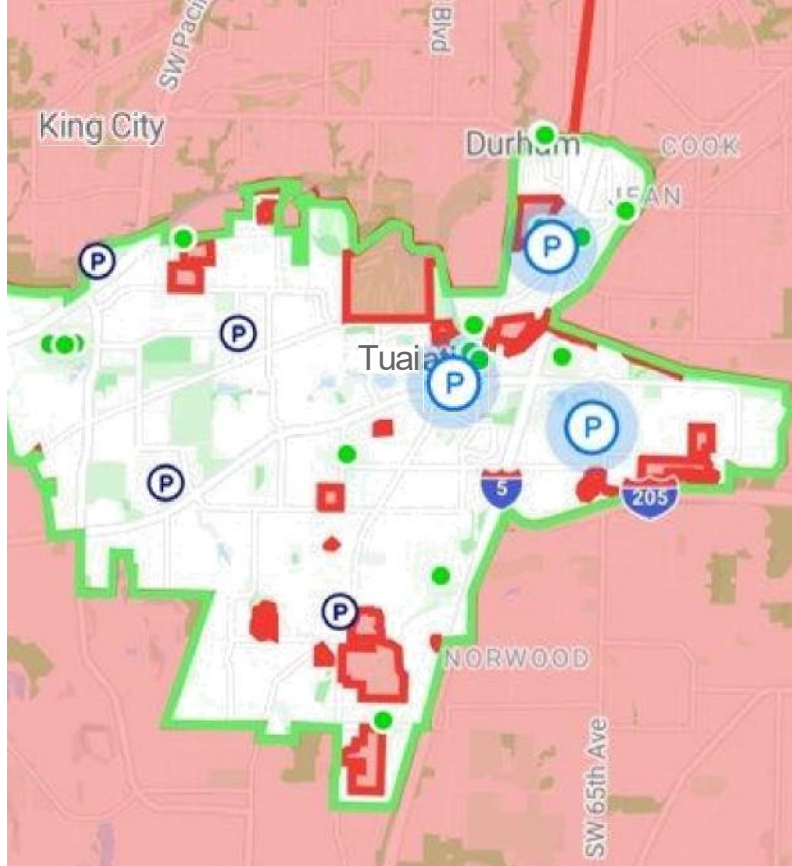


# *City of Tualatin*

- Population about 27,000
- 12 miles south of Portland
- Lots of employment - 30,500 employees, most commute in for work
- Limited public transportation
- Car dependent, car-oriented infrastructure



CITY of  
TUALATIN

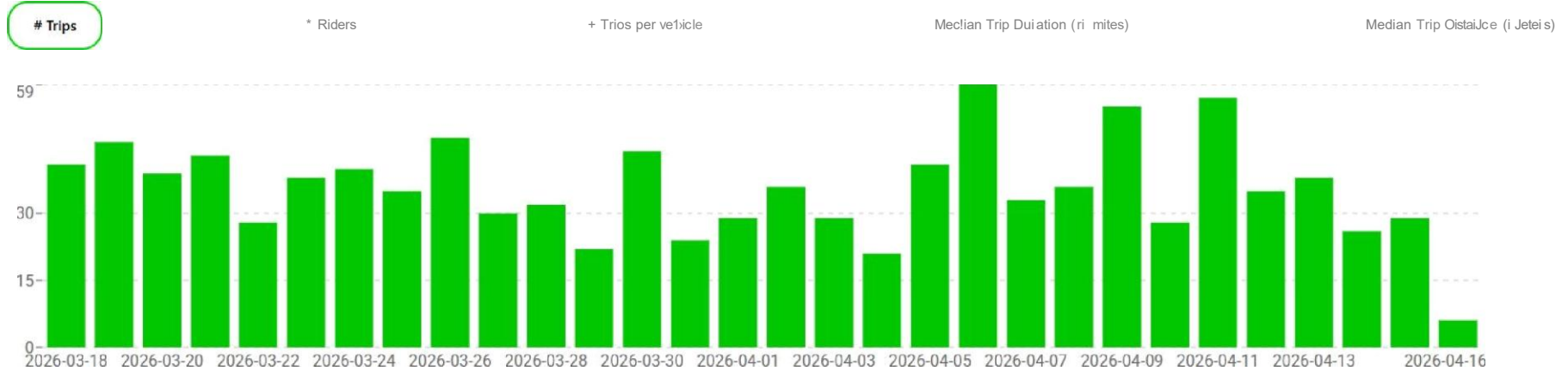


# Cumulative Trips & Lifetime

# Trips	4 Riders	Total Distance	CO2 Saved	Median Distance/Trip	Median Time/Trip
49,655	7,560	55,462.3 mi		0.9 mi	8 min

## Trip Trends

Daily -



# City of Hillsboro and Washington County Transportation Needs Assessment

- Project partners: City of Hillsboro, Westside Transportation Alliance, and FCS consulting firm
- A multi-year study currently in beginning stages
- Funded through an ODOT Innovative Mobility Program (IMP) Study and Assessment grant, with local matches from the City and County



Westside  
Transportation  
Alliance



**FCS**  
a Bowman company



## Research Questions

- How are people in Washington County getting to work, and how far are they traveling?
- How have commute patterns changed over the past 10 years - before and through Covid?
- How do commute patterns change based on income and other demographic data?
- What travel modes are commuters interested in?

## Strategies

- Compile and analyze 10 years of Employee Commute Options (ECO) survey data from all employers in Washington County, provided by OR Dept of Environmental Quality
- Incorporate OR Dept of Revenue and US Census data for income and demographic data
- Determine travel patterns using Placer.ai tool
- Conduct statistically significant surveys to fill gaps in data

**Using this information, with a focus on historically underserved populations, how can we best help people use transportation options to get to work without needing to drive alone?**



# Department of Land Use & Transportation

