



For the Birds

(AND THE PEOPLE)

**HOW OUR LIBRARY BECAME A
CERTIFIED WILDLIFE HABITAT**

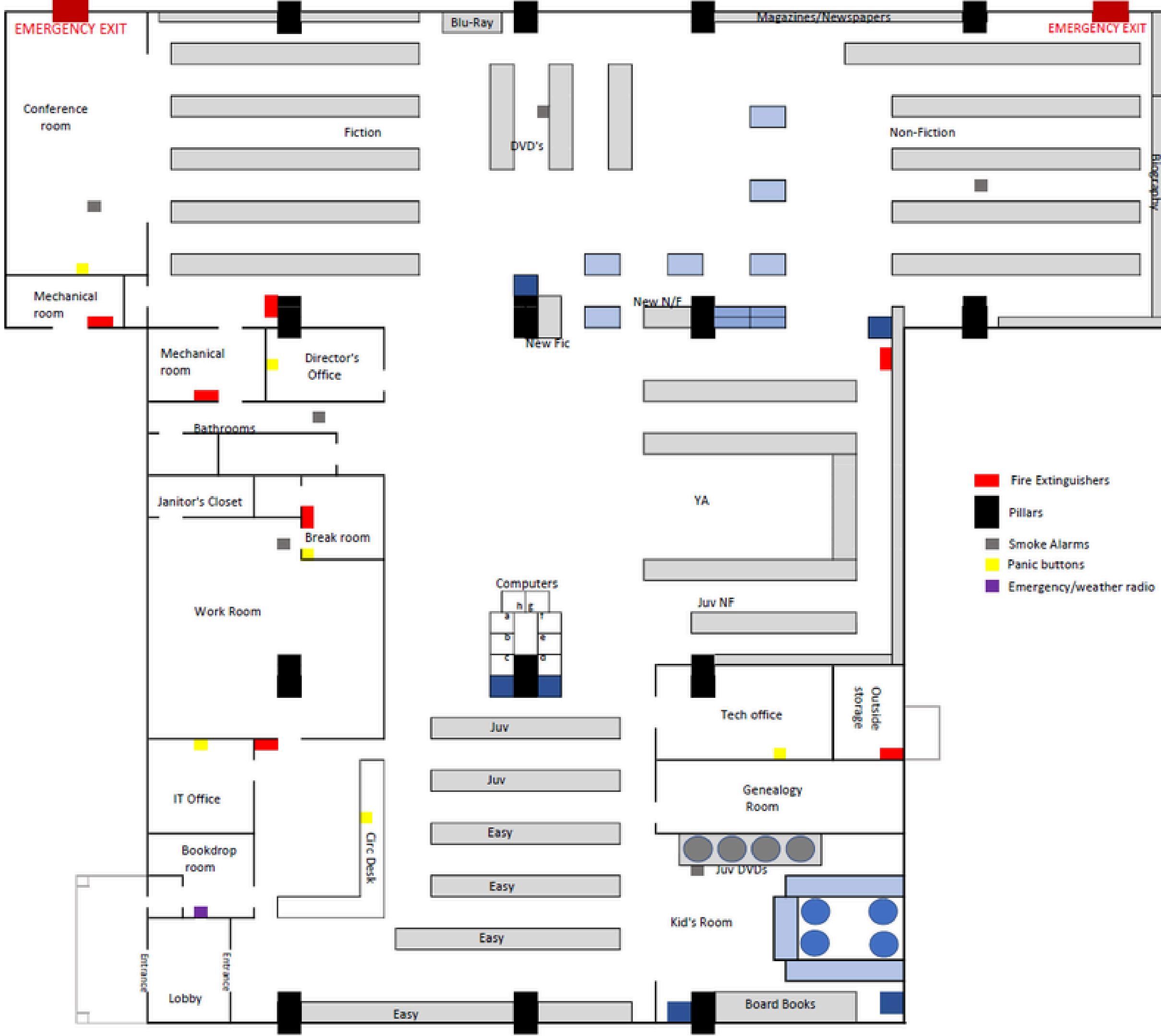
Presented by: Courtney Mercurio

PREVIOUSLY @ TNLA 2024

REIMAGINING LIBRARY SPACES

Presented by: Courtney Mercurio





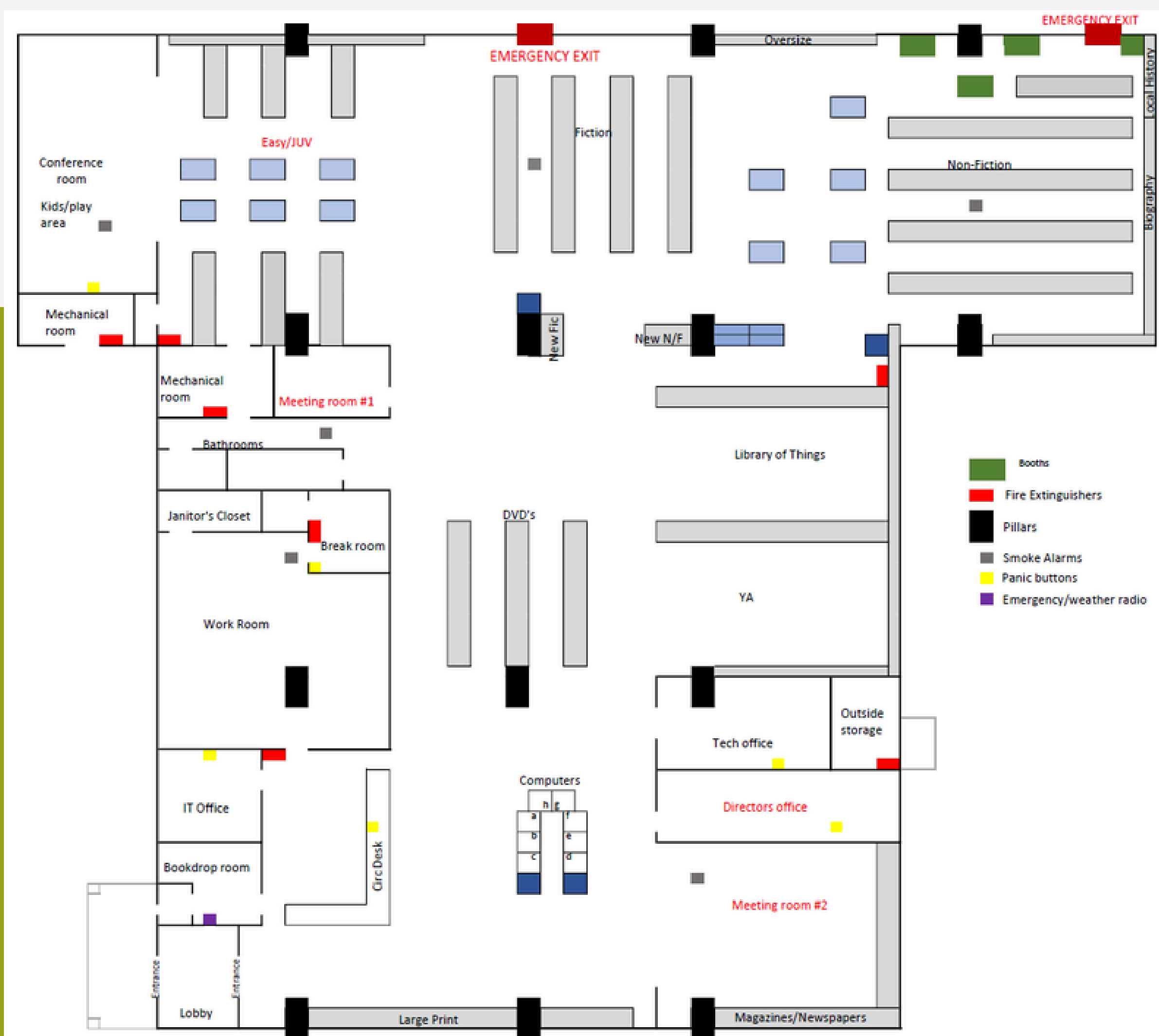
GOALS

- Improve sound quality at circ-desk
- Move Children's area to the back
- Move DVDs to the front
- Create more study spaces
- Move genealogy to Non-Fiction →

PLAN?

-Move Juvenile materials and supplies to fiction, create program space in conference room...

x Emergency exit in conference room??
x Safety of children out of sight of staff??





BEFORE...





OUR SPACE



Outdoor Classroom



Pollinator Garden



Greenway & Book Trail

Coffee County
Senior Citizens



Coffee County
Lantern Library



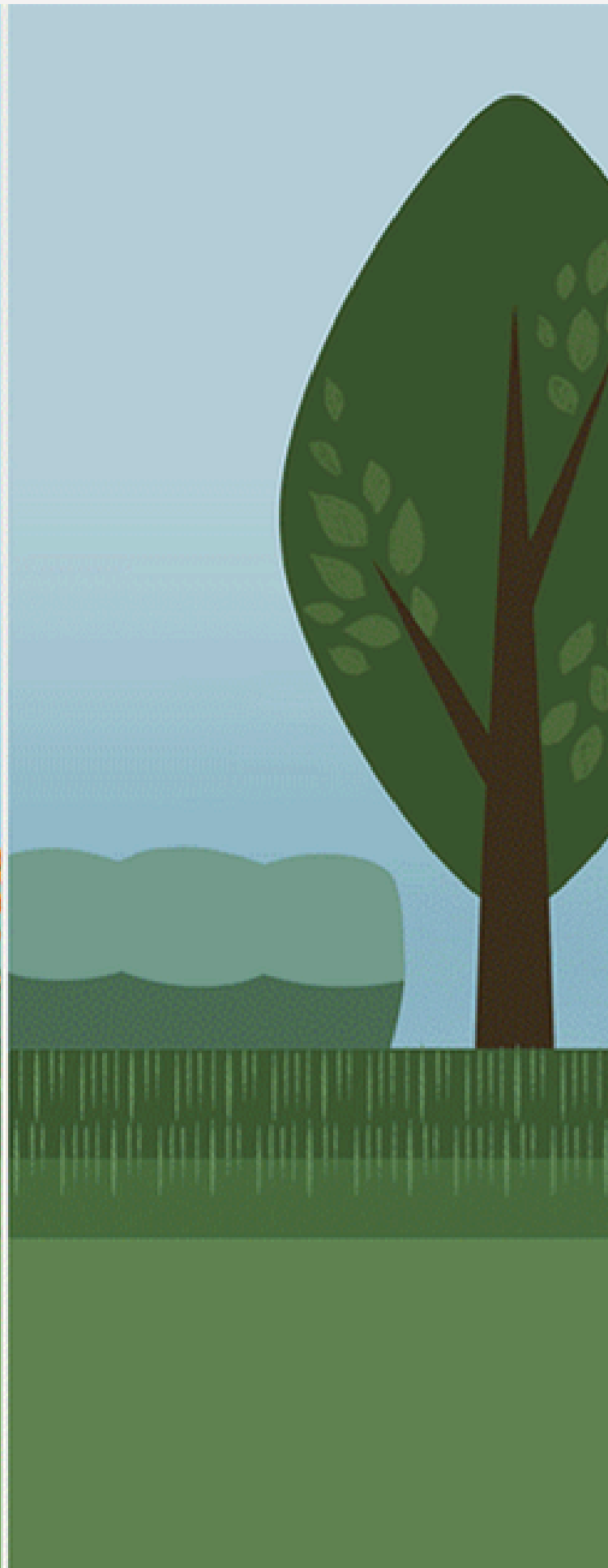
310



GARDEN
FOR WILDLIFE

Certified Wildlife Habitats® grow where people live, work, learn, play and worship





“An ideal Certified Wildlife Habitat provides **food, water, cover, and places to raise young** for wildlife with a minimum goal of 70% native plants that provide multi-season bloom and are free of neonicotinoids and other pesticides or herbicides.” -nwf.org



FOOD

 **Minimum** of three

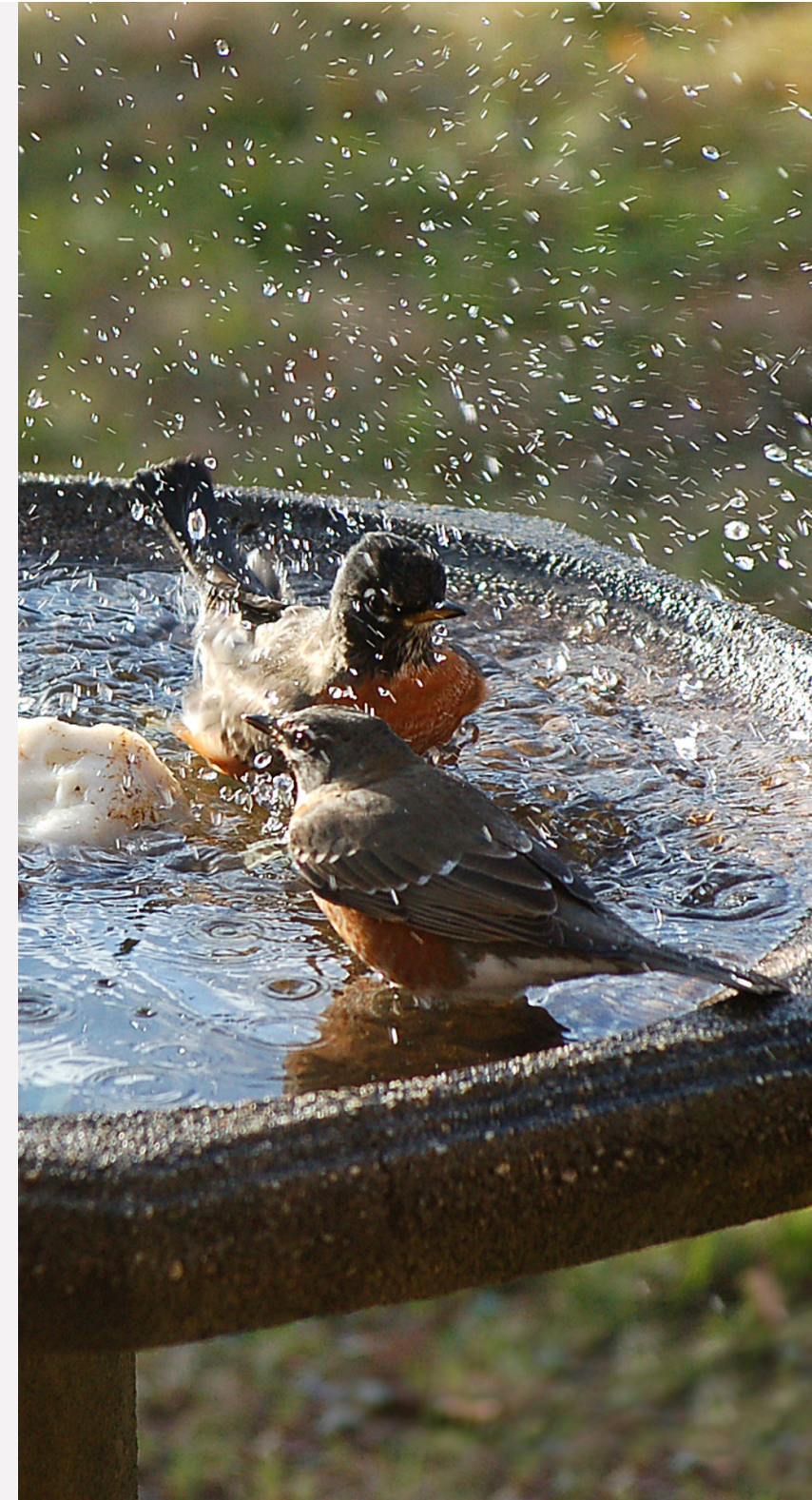
- Native Plants**
- Nectar and **Pollen**
- Seeds**
- Fallen Leaf Layer**
- Nuts/Cones
- Berries/Fruits
- Host Plants for Caterpillars
- Foliage/Twigs
- Insects

WATER

 **Minimum of one**

-Bird Bath

- Seasonal Pond
- Year-Round Pond
- Butterfly Puddling Area
- Rain or Water Garden
- Spring
- Lake
- River or Stream
- Ocean



COVER



Minimum of two



- Mature Trees**
- Bramble Patches**
- Groundcover**
- Rock Pile or Wall**
- Evergreens**
- Brush or Log Pile**
- Dense Shrubs/Thicket**
- Meadow or Prarie**
- Pond or Water Garden**
- Animal Burrow**
- Leaving dead perennial stems 12-18 inches for overwintering insects**



PLACES TO RAISE YOUNG



Minimum of two

- Host Plants for Caterpillars**
- Mature Trees**
- Meadow or Prairie
- Dead Trees (Snags)**
- Dense Shrubs/Thicket
- Fallen Leaf Layer**
- Pond or Water Garden
- Animal Burrow
- Hollow Stems**

SUSTAINABLE PRACTICES

SOIL & WATER CONSERVATION

- Planted shoreline
- capture rain water from roof
- xeriscape (water-wise landscaping)
- Drip or soaker hose for irrigation
- limit water use
- reduce erosion

CONTROLLING NON-NATIVE SPECIES

- remove non-native plants and animals
- practice integrated pest management
- use native plants
- reduce lawn space

REDUCING POLLUTION

- Eliminate chemical pesticides
- eliminate chemical fertilizers
- turn off outdoor lights at night
- replace outdoor lights with amber-colored LED bulbs

REDUCE/ REUSE/ RECYCLE

- Compost kitchen and garden waste
- eliminate use of plastic weed liners
- use leaves as natural mulch
- clean and reuse garden pots
- repair or borrow garden tools before repurchasing

Feeders

Bird Baths

Native Plants







REVIVED POLLINATOR GARDEN

UTEXTENSION
INSTITUTE OF AGRICULTURE
THE UNIVERSITY OF TENNESSEE



Crimson Clover Master
Gardener Association

ACTUAL COST?

- What did we pay for? And How?
 - What was donated?
 - Staff Time Investment?
 - Maintenance Reality
- What happens when the plants die?**



DID ANYONE TELL ME NO?

- Liability?
- Wildlife Feeding Policies?
- Pest Concerns?
- Facilities and Rain Barrel?



**TWO THINGS
CAN BE TRUE...**

*Remember,
Small beauty
matters*





MIDDLE TENNESSEE
RAPTOR CENTER



**CERTIFICATION
CELEBRATION
APRIL 9TH 10 AM**

“It would be absolutely useless for any of us to work to save wildlife without working to educate the next generation of conservationists.”

-Jane Goodall



ONGOING IMPACT

- Bird-food donations
- Conversations
- Interest in nature



THANK YOU!



**COURTNEY MERCURIO
COFFEE COUNTY LANNOM LIBRARY
DIRECTOR@LANNOM.ORG**

