



# Providing Access to E-theses, E-dissertations (ETDs) and Digitized Theses and Dissertations (DTDs) in the Library Catalogs at the University of Tennessee Libraries

**Anchalee Panigabutra-Roberts Wanda Rosinski David Scott**  
Cataloging, University of Tennessee Libraries  
[lib.utk.edu](http://lib.utk.edu)

Tennessee Library Association 2026 Annual Conference  
April 23, 2026

Knoxville Convention Center  
Knoxville, TN



# Agenda

- Introduction
- ETDs' Cataloging Workflow
- DTDs' Workflow
- Withdrawal Process of DTD Copies
- Workflow to Add ORCIDiDs to ETD Catalog Records & LC Name Authority Records
- Q&A





# Introduction





## TRACE

- **E-Theses & Dissertations and Digitized Theses and Dissertations** <https://trace.tennessee.edu/home>

## OCLC WorldCat

- Original Cataloging/Constant Data/Updating ETDs
- **LC Name Authority/ETDs only**

## Ex Libris Alma

- Dissertations
- Master theses

## NDLTD

- **Global ETD Search via** <https://oatd.org/>

## ProQuest Dissertations & Theses Global (PQDT Global)

- **UT Libraries-Databases**  
<https://libguides.utk.edu/databases>



# ETD & DTD Workflows & Sources of Information

## **ETDs**

- TRACE

## **DTDs**

- Digital Production
- TRACE





# ETDs' & DTDs' Cataloging Levels



## **Dissertations**

Full-level  
cataloging with  
subject headings

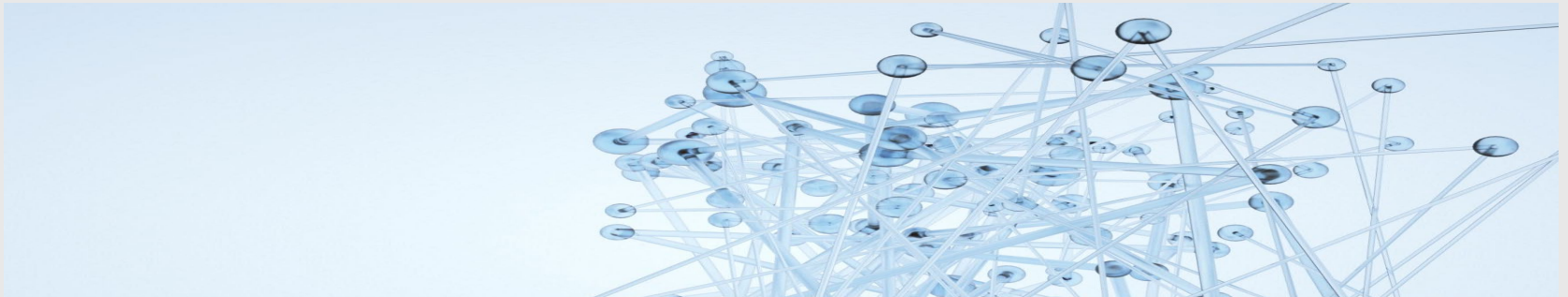


## **Master theses**

Minimum cataloging  
with no subjects;  
except for theses  
about the U.S.  
Southeastern Region



# ETDs' Cataloging Workflow

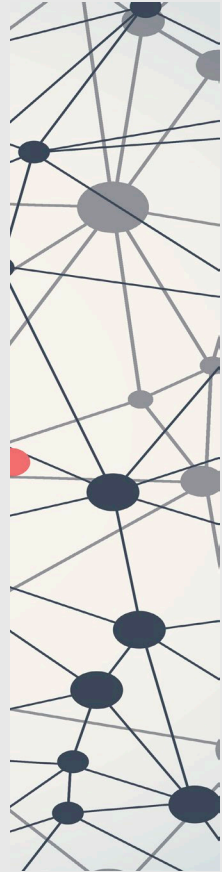




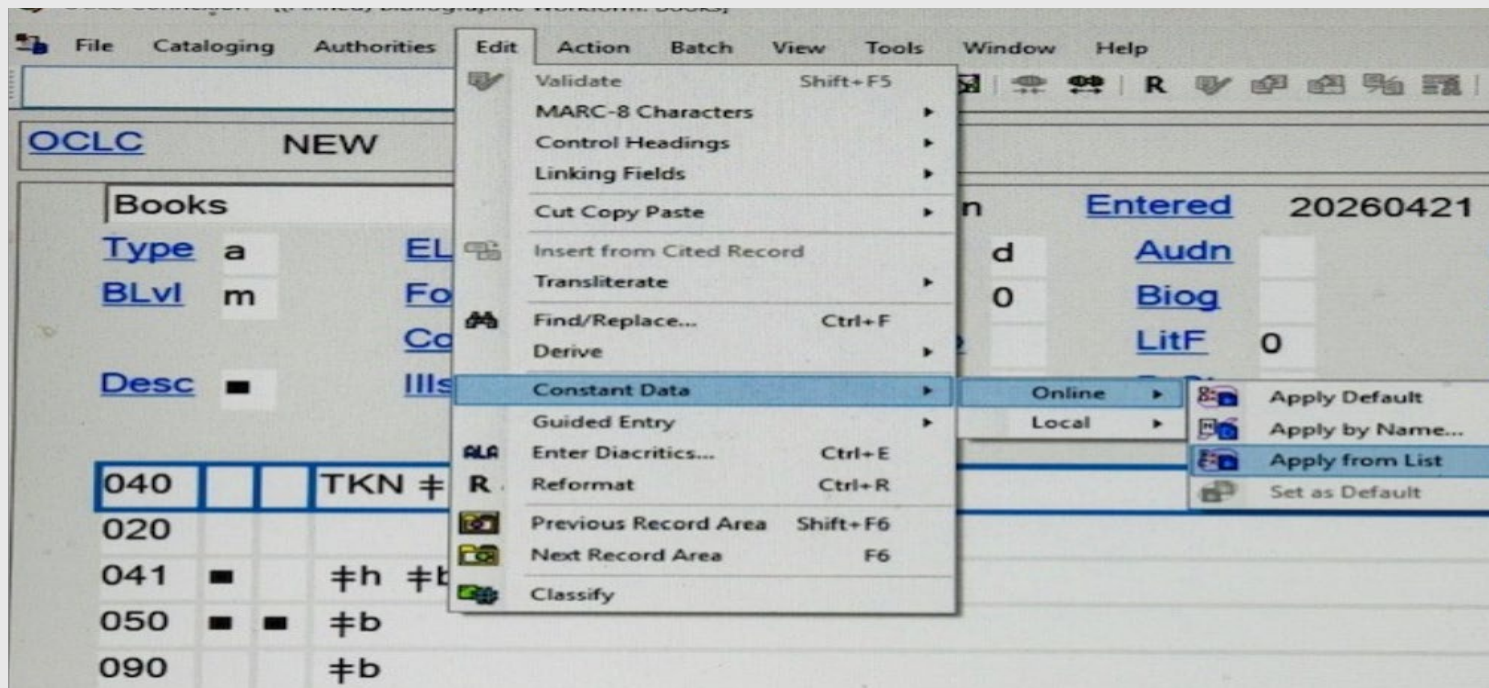
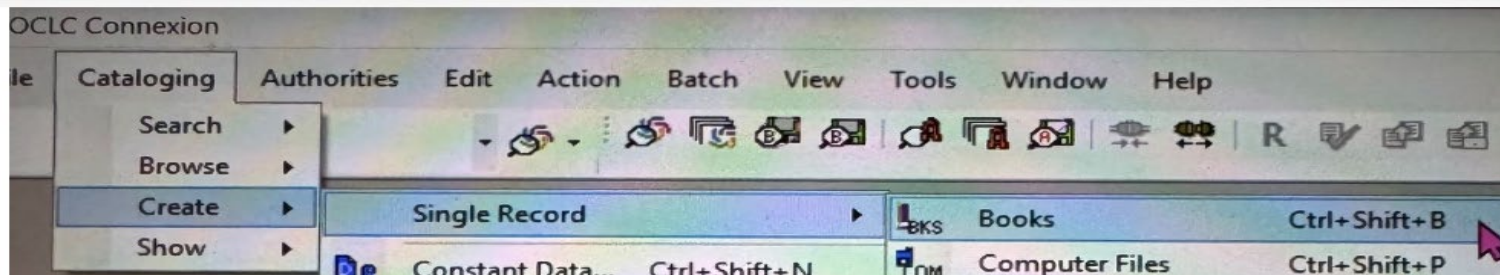
# Cataloging in WorldCat ~ Constant Data

- We created a constant data in WorldCat for ETD cataloging
- Full-level/original cataloging with subjects based on TRACE metadata for dissertations; with no subjects for master theses (except for content on the U.S. Southeastern Region)
- ETD constant data templates in WorldCat

- Based on ND LTD's **Metadata Guidelines:**  
<https://www.ndltd.org/standards/metadata/draft-07-09-2000.html>
- Create name authorities as needed to distinguish authors with similar names for ETDs



# Create a New Record in OCLC Connexion



# OCLC Constant Data Form for E-Master Theses

Books	Rec stat	n	Criteria	20231221	
Type a	ELvl 7	Srcce d	Audn	Ctrl	Lang eng
BLvl m	Form o	Conf 0	Biog	MRec	Ctry tnu
	Cont b m	GPub	LitF 0	Indx 0	
Desc i	lls	Fest 0	DtSt t	Dates 2020	, 2020
006	m o d				
007	c #b r #d u #e n #f u				
040	TKN #b eng #e rda #c TKN				
099	Thesis #a 2020 #a .				
049	TKNN				
100 1	_____, #e author #4 <a href="http://rdaregistry.info/Elements/a/rdaa:P50541">http://rdaregistry.info/Elements/a/rdaa:P50541</a> #0 (orcid) ____ #1 ____				
245 1 0	____ #b ____ / #c ____				
264 1	Knoxville, Tennessee : #b The University of Tennessee, Knoxville, #c 2020.				
264 4	#c ©2020 DELETE				
300	1 online resource ( ____ pages) : #b ____				
336	text #b txt #2 rdacontent #0 <a href="http://rdaregistry.info/termList/RDAContentType/1020">http://rdaregistry.info/termList/RDAContentType/1020</a>				
337	computer #b c #2 rdamedia #0 <a href="http://rdaregistry.info/termList/RDAMediaType/1003">http://rdaregistry.info/termList/RDAMediaType/1003</a>				
338	online resource #b cr #2 rdacarrier #0 <a href="http://rdaregistry.info/termList/RDACarrierType/1018">http://rdaregistry.info/termList/RDACarrierType/1018</a>				

500	Title from title page screen (viewed on ____, 2026).
500	Thesis advisor: ____.
502	#b M. . #c The University of Tennessee, Knoxville #d 2020.
500	Vita.
504	Includes bibliographical references (pages ____).
540	The author retains ownership of copyright and all other proprietary rights, such as patent rights, in this thesis or dissertation. The author has granted the University permission to archive, to reproduce, and to publicly display this dissertation or thesis in all media now known or developed in the future, including by electronic and digital technologies.
520 3	_____
655 7	Academic theses. #2 lcgt
690	UTK Theses #x ____.
700 1	____, #e degree supervisor #4 <a href="http://rdaregistry.info/Elements/a/rdaa:P50091">http://rdaregistry.info/Elements/a/rdaa:P50091</a> #0 (orcid) ____ #1 ____
710 2	University of Tennessee, Knoxville. #b Department of ____, #e degree granting institution #4 <a href="http://rdaregistry.info/Elements/a/rdaa:P50003">http://rdaregistry.info/Elements/a/rdaa:P50003</a>
856 4 0	#u ____

# OCLC Constant Data Form for E-Dissertations

BOOKS	rec stat	Entered	20231013
Type a	ELvl	Srce d	Audn Ctrl
BLvl m	Form o	Conf 0	Biog MRec Ctry trn
	Cont b m	GPub LitF 0	Indx 0
Desc i	Ills	Fest 0	DtSt t Dates 2020, 2020
006	m o d		
007	c #b r #d u #e n #f u		
040	TKN #b eng #e rda #c TKN		
043	_____		
099	Thesis #a 2020b #a .		
100	1   _____. #e author #4 <a href="http://rdaregistry.info/Elements/a/rdaa:P50541">http://rdaregistry.info/Elements/a/rdaa:P50541</a> #0 (orcid) ____   #1 ORCIDORCIDORCID		
245	1 0 ____ #b ____ / #c ____.		
264	1 Knoxville, Tennessee : #b The University of Tennessee, Knoxville, #c 2020.		
264	4 #c ©2020 DELETE		
300	1 online resource ( ____ pages) : #b ____		
336	text #b txt #2 rdacontent #0 <a href="http://rdaregistry.info/termList/RDContentType/1020">http://rdaregistry.info/termList/RDContentType/1020</a>		
337	computer #b c #2 rdamedia #0 <a href="http://rdaregistry.info/termList/RDAMediaType/1003">http://rdaregistry.info/termList/RDAMediaType/1003</a>		
338	online resource #b cr #2 rdacarrier #0 <a href="http://rdaregistry.info/termList/RDACarrierType/1018">http://rdaregistry.info/termList/RDACarrierType/1018</a>		

500	Title from title page screen (viewed on ____, 2026).
500	Thesis advisor: ____.
502	#b Ph. D. #c The University of Tennessee, Knoxville #d 2020.
500	Vita.
504	Includes bibliographical references (pages ____).
540	The author retains ownership of copyright and all other proprietary rights, such as patent rights, in this thesis or dissertation. The author has granted the University permission to archive, to reproduce, and to publicly display this dissertation or thesis in all media now known or developed in the future, including by electronic and digital technologies.
520	3 ____
650	0 ____
651	0 ____
655	7 Academic theses. #2 lcgft
690	UTK Theses #x ____.
700	1 _____. #e degree supervisor #4 <a href="http://rdaregistry.info/Elements/a/rdaa:P50091">http://rdaregistry.info/Elements/a/rdaa:P50091</a> #0 (orcid) _____ #1 ORCIDORCIDORCID
710	2 University of Tennessee, Knoxville. #b Department of ____, #e degree granting institution #4 <a href="http://rdaregistry.info/Elements/a/rdaa:P50003">http://rdaregistry.info/Elements/a/rdaa:P50003</a>
856	4 0 #u ____

# Completed OCLC Record for an E-Dissertation

OCLC		1150889263	Held by TKN - no other holdings						
Books	Rec stat	c	Entered	20200415	Replaced	2024012710023			
Type	a	ELVI	Src	d	Audn	Ctrl	Lang	eng	
BLVI	m	Form	o	Conf	0	Biog	MRec	Ctrl	tnu
		Cont	b m	GPub		LitF	0	Indx	0
Desc	i	Ills		Fest	0	DtSt	s	Dates	2018

006		m	o	d		
007		c	#b r	#d u	#e n	#f u
040		TKN	#b eng	#e rda	#c TKN	
066		#c (				
099		Thesis	#a 2018b	#a.W45		
090		#b				

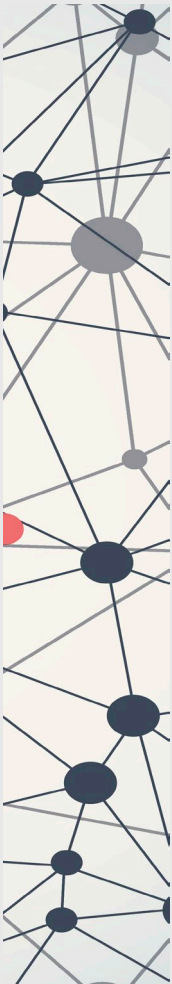
049		TKNN			
100	1	Weir, Elise Anne,	#e author	#4 <a href="http://rdaregistry.info/elements/a/rdaa:p50541">http://rdaregistry.info/elements/a/rdaa:p50541</a> #1	<a href="https://orcid.org/0000-0003-4681-8839">https://orcid.org/0000-0003-4681-8839</a>
245	1 4	The dimension of the restricted Hitchin component for triangle groups /	#c Elise Anne Weir.		
264	1	Knoxville, Tennessee :	#b The University of Tennessee, Knoxville,	#c 2018.	
264	4	#c	©2018		
300		1 online resource (96 pages) :	#b color illustrations		
336		text	#b txt	#2 rdacontent	
337		computer	#b c	#2 rdamedia	
338		online resource	#b cr	#2 rdacarrier	
500		Title from title page screen (viewed on April 15, 2020).			
500		Thesis advisor: Morwen B. Thistlethwaite.			
502		#b Ph. D.	#c The University of Tennessee, Knoxville	#d 2018	
500		Vita.			
504		Includes bibliographical references (pages 67-69).			

500		Thesis advisor: Morwen B. Thistlethwaite.		
502		#b Ph. D.	#c The University of Tennessee, Knoxville	#d 2018
500		Vita.		
504		Includes bibliographical references (pages 67-69).		
540		The author retains ownership of copyright and all other proprietary rights, such as patent rights, in this thesis or dissertation. The author has granted the University permission to archive, to reproduce, and to publicly display this dissertation or thesis in all media now known or developed in the future, including by electronic and digital technologies.		
520	3	Given positive integers $p, q, r$ satisfying $1/p + 1/q + 1/r < 1$ , the hyperbolic triangle group $T(p, q, r)$ is the group of orientation-preserving isometries of a tiling of the hyperbolic plane by triangles congruent to a geodesic triangle with angles $n/p, n/q,$ and $n/r$ . We will examine representations of triangle groups in the Hitchin component, a topologically connected component of the representation variety where representations are always discrete and faithful. We begin by giving a formula for the dimension of a subset of the Hitchin component of an arbitrary hyperbolic triangle $T(p, q, r)$ for general degree $n > 2$ . Depending on whether $n$ is even or odd, we will consider only those Hitchin representations whose images lie in $Sp(2m)$ or $SO(m, m + 1)$ , respectively. We call the space of representations satisfying this criterion the restricted Hitchin component. We then provide two new families of representations of the specific triangle group $T(2, 3, 4)$ into $Sp(5, 5)$ ; the image groups of these families are each		
650	0	<a href="#">Hyperbolic groups.</a>		
650	0	<a href="#">Geodesics (Mathematics)</a>		
650	0	<a href="#">Geometry, Hyperbolic.</a>		
655	7	<a href="#">Academic theses.</a> #2 lcgtf		
700	1	Thistlethwaite, Morwen,	#e degree supervisor	#4 <a href="http://rdaregistry.info/elements/a/rdaa:p50091">http://rdaregistry.info/elements/a/rdaa:p50091</a> #1 <a href="https://orcid.org/0000-0003-4890-0123">https://orcid.org/0000-0003-4890-0123</a>
710	2	<a href="#">University of Tennessee, Knoxville.</a> #b <a href="#">Mathematics Department.</a> #e degree granting institution.		
758		#i has work: #a The dimension of the restricted Hitchin component for triangle groups (Text) #1 <a href="https://id.oclc.org/worldcat/entity/E39PCGKDmdYbYb3MBRQVfm8Q7RC">https://id.oclc.org/worldcat/entity/E39PCGKDmdYbYb3MBRQVfm8Q7RC</a> #4 <a href="https://id.oclc.org/worldcat/ontology/hasWork">https://id.oclc.org/worldcat/ontology/hasWork</a>		
856	4 0	#u <a href="https://trace.tennessee.edu/utk_graddiss/5089">https://trace.tennessee.edu/utk_graddiss/5089</a>		



# Adding an E-portfolio for an ETD in Alma

1. Open the record in the metadata editor and navigate to **Add Inventory\Add Portfolio** on the toolbar.
2. Inside the box for **General Information**, select the radio button for “**Part of an electronic collection.**”
3. In the pop-up prompt’s Search field, enter the ID: **61288204380002311** and search.
4. Select the titled **TRACE: UTK Dissertations and Theses.**
5. Scroll down to “**Inventory and Linking Information,**” and add the URL (from Field 856) in the provided field.
6. In the dropdown menu for “**Electronic material type,**” indicate whether the work is a **Dissertation or Master’s Thesis.**
7. In the top-right, **click the button Save and Done** to save your changes.



## Details

Title	<a href="#">The dimension of the restricted Hitchin component for triangle groups</a>
Creator	<a href="#">Weir, Elise Anne, author</a> >
Contributor	<a href="#">Thistlethwaite, Morwen, degree supervisor.</a> > University of Tennessee, Knoxville. Mathematics Department. degree granting institution. >
Subject	<a href="#">Hyperbolic groups</a> > <a href="#">Geodesics (Mathematics)</a> > <a href="#">Geometry, Hyperbolic</a> >
Local Subject Heading	UTK Theses Mathematics.
Description	Given positive integers $p, q, r$ satisfying $1/p + 1/q + 1/r < 1$ , the hyperbolic <a href="#">triangle group</a> $T(p,q,r)$ is the group of orientation-preserving isometries of a tiling of the hyperbolic plane by triangles congruent to a geodesic <a href="#">triangle</a> with angles $\pi/p, \pi/q$ , and $\pi/r$ . We will examine representations of <a href="#">triangle groups</a> in the <a href="#">Hitchin component</a> , a topologically connected <a href="#">component</a> of the representation variety where representations are always discrete and faithful. We begin by giving a formula for the dimension of a subset of the <a href="#">Hitchin component</a> of an arbitrary hyperbolic <a href="#">triangle</a> $T(p, q, r)$ for general degree $n > 2$ . Depending on whether $n$ is even or odd, we will consider only those <a href="#">Hitchin</a> representations whose images lie in $Sp(2m)$ or $SO(m, m + 1)$ , respectively. We call the space of representations satisfying this criterion the restricted <a href="#">Hitchin component</a> . We then provide two new families of representations of the specific <a href="#">triangle group</a> $T(3,3,4)$ into $SL(5, \mathbb{R})$ ; the <a href="#">image group</a> of these families are each shown to be Zariski dense in $SL(5, \mathbb{R})$ . Further, we consider a restriction to a surface subgroup of finite index in $T(3,3,4)$ . For each family, we will demonstrate the existence of a subsequence of representations whose images are pairwise non-conjugate in $SL(5, \mathbb{Z})$ when restricted to a surface subgroup.
Publisher	Knoxville, Tennessee : The University of Tennessee, Knoxville
Creation Date	2018
Format	1 online resource (96 pages) : color illustrations
Language	English
Bibliography, etc.	Includes bibliographical references (pages 67-69).
Identifier	OCLC : (OCoLC)1150889263 OCLC : (OCoLC)on1150889263
General Notes	Title from title page screen (viewed on April 15, 2020). Thesis advisor: Morwen B. Thistlethwaite. Vita.
Dissertation Note	Ph. D. The University of Tennessee, Knoxville, 2018.
Source of Description	Some URIs added to this record for the PCC URI MARC pilot. Please do not remove these subfields
Source	Library Catalog

# Example: An ETD Author's Name Authority

010		no2025103308
040		TU †b eng †e rda †c TU
046		†f 1989-02-25 †2 edtf
100	1	Chen, Wei, †c (Researcher in physics) ←
370		Funing Xian (Jiangsu Sheng, China) †2 naf †0 <a href="http://id.loc.gov/authorities/names/nr94029140">http://id.loc.gov/authorities/names/nr94029140</a> †1 <a href="http://id.loc.gov/rwo/agents/nr94029140">http://id.loc.gov/rwo/agents/nr94029140</a>
370		†e Knoxville (Tenn.) †2 naf †0 <a href="http://id.loc.gov/authorities/names/n79109786">http://id.loc.gov/authorities/names/n79109786</a> †1 <a href="http://id.loc.gov/rwo/agents/n79109786">http://id.loc.gov/rwo/agents/n79109786</a>
372		Physics †2 lcsh †0 <a href="http://id.loc.gov/authorities/subjects/sh85101653">http://id.loc.gov/authorities/subjects/sh85101653</a>
372		Condensed matter †2 lcsh †0 <a href="http://id.loc.gov/authorities/subjects/sh85030765">http://id.loc.gov/authorities/subjects/sh85030765</a>
372		Layer structure (Solids) †2 lcsh †0 <a href="http://id.loc.gov/authorities/subjects/sh85075393">http://id.loc.gov/authorities/subjects/sh85075393</a>
373		Zhongguo ke xue ji shu da xue †2 naf †s 2005 †t 2009 †0 <a href="http://id.loc.gov/authorities/names/n81063113">http://id.loc.gov/authorities/names/n81063113</a> †1 <a href="http://id.loc.gov/rwo/agents/n81063113">http://id.loc.gov/rwo/agents/n81063113</a>
373		University of Tennessee, Knoxville †2 naf †t 2014 †0 <a href="http://id.loc.gov/authorities/names/n80003889">http://id.loc.gov/authorities/names/n80003889</a> †1 <a href="http://id.loc.gov/rwo/agents/n80003889">http://id.loc.gov/rwo/agents/n80003889</a>
374		Physicists †2 lcdgt †0 <a href="http://id.loc.gov/authorities/demographicTerms/dg2016060294">http://id.loc.gov/authorities/demographicTerms/dg2016060294</a>
400	0	Wei Chen
670		Chen, Wei, (Researcher in physics). Theoretical studies on the growth and functionality of layered materials, 2014, viewed on September 12, 2025: †b title page (Wei Chen) vita (Wei Chen was born in Funing, Yancheng, Jiangsu, China on February 25, 1989; he entered the Special Class for the Gifted Young, University of Science and Technology of China in 2005 as an undergraduate, and got his Bachelor of Science degree in Theoretical Physics in 2009; after that, he went to the University of Tennessee at Knoxville for graduate study in condensed matter physics) †u <a href="https://trace.tennessee.edu/utk_graddiss/2809">https://trace.tennessee.edu/utk_graddiss/2809</a>

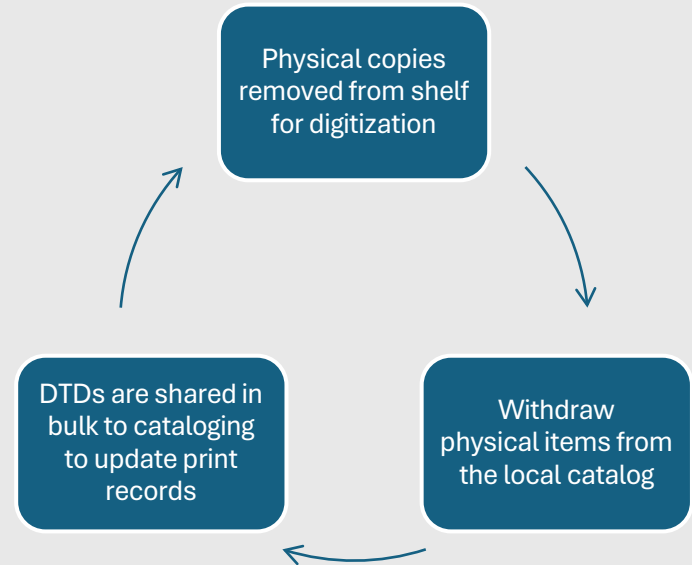


# DTD Workflow



# DTD Workflow

- The DTD copies are withdrawn.
- Update existing print records in OCLC and Alma.
- Add ePortfolios to Alma records if not already present.
- Preservation copies are retained in the Special Collections





# Adding Field 856 and E-portfolios

## Background

- Patrons might request digitization for print materials already digitized.
- Project started in Spring 2025 and has since become part of the standard workflow.
- Adds URLs and e-portfolios to print records in bulk.

## Workflow

1. Import batch of DTD records into MarcEdit.
2. Add Field 856 with URL to each record individually one-by-one.
3. After review, records are imported into Alma, which automatically creates e-portfolios for said records.


Before

 **Application of the Theory of Reasoned Action regarding the behavioral intention to consume five fruits and vegetables a day in a Women, Infants, Children population / Katherine Michelle Anderson.** [Edit Record](#) [View Record](#) [...](#)


By Anderson, Katherine Michelle, (The University of Tennessee, Knoxville 2000.) **Book {Book - Physical} text; unmediated; volume**  
 Subject Academic Dissertation ; Academic theses. **Creation Date** 12/07/2014 10:14: AM, EST  
 Language English **Modification Date** 04/15/2026 08:56: AM, EDT  
**MMS ID** 9913076720102311  
**Record Number** (OCoLC)46606627 and others

 **P** ● Physical (1)

Library	Location	Call Number	Accession Number	Item Availability	Related Record
1	SC	THDIS	Thesis 2000 .A54	-	● 1 items out of 1 available - ...

 **Application of the Theory of Reasoned Action regarding the behavioral intention to consume five fruits and vegetables a day in a Women, Infants, Children population / Katherine Michelle Anderson.** [Edit Record](#) [View Record](#) [...](#)

By Anderson, Katherine Michelle, (The University of Tennessee, Knoxville 2000.) **Book {Book - Physical} text; unmediated; volume**  
 Subject Academic Dissertation ; Academic theses. **Creation Date** 12/07/2014 10:14: AM, EST  
 Language English **Modification Date** 01/30/2026 04:51: AM, EST  
**MMS ID** 9913076720102311  
**Record Number** (OCoLC)46606627 and others

 **P** ● Physical (1)

Library	Location	Call Number	Accession Number	Item Availability	Related Record
1	SC	THDIS	Thesis 2000 .A54	-	● 1 items out of 1 available - ...

**E** ● Electronic (1)

Availability	Interface Name	Collection Name	Service Type	Portfolio Availability	Portfolio ID
1	● Available	-	● TRACE: UTK Dissertations and Theses	Full Text (Available)	● Active 53441062590002311 ...

Alma

After

# ONE SEARCH

## Before

Send to

PERMALINK CITATION EMAIL PRINT ENDNOTE EXPORT RIS EXPORT TO EXCEL

EASYBIB EXPORT BIBTEX REWORKS

Availability and Request

REQUEST: [Requesting items: How to](#)

Sign in for request options. [Sign in](#)

[BACK TO LOCATIONS](#)

LOCATION ITEMS

Special Collections  
Available, Thesis / Dissertation ; Thesis85b.H258  
(1 copy, 1 available, 0 requests)

Item in place  
Sign in for loan options. [Request for the Reading Room](#)

Details

Title The city of Paris : a shape and a shaping force in selected nineteenth century British fiction  
Creator Hait, Elizabeth Anne. >

## After

Online Access Options

Full text availability

[TRACE: UTK Dissertations and Theses](#)

Availability and Request

REQUEST: [Requesting items: How to](#)

Sign in for request options. [Sign in](#)

[BACK TO LOCATIONS](#)

LOCATION ITEMS

Special Collections  
Available, Thesis / Dissertation ; Thesis 2000 .B46  
(1 copy, 1 available, 0 requests)

Item in place  
Sign in for loan options. [Request for the Reading Room](#)

# The Workflow to Add ORCIDiDs to ETD Catalog Records & LC Name Authority Records



([PCC URIs in MARC Pilot's Documentation](#) & [NACO 024 Best Practices](#))



# Cataloging Guideline (1)

## i. Updated local WorldCat constant data for ETDs:

- Added URI enrichment in the local WorldCat constant data for ETDs based on [PCC Task Group on Linked Data Best Practices](#) (page 2) to use **RDA Registry** for **role terms**
- For relationship terms used in MARC 1XX and 7XX \$e, added \$4 with the URIs for RDA elements for relationship terms ([MARC21 guideline for \\$4](#))

## Example for the department home for an ETD:

**710 2\_ |a University of Tennessee, Knoxville. |b College of Veterinary Medicine**

**|e sponsoring body** |4 <http://rdaregistry.info/Elements/a/rdaa:P50009>

|0 <http://id.loc.gov/authorities/names/nr2001050034>

## Example: WorldCat's Constant Data For Cataloging Dissertations\*

006 m o d  
007 c #b r #d u #e n #f u  
040 TKN #b eng #e rda #c TKN  
043 [Geographic code if needed]  
099 Thesis #a 2019b #a .  
100 1\_ [Verified form of name], #e author #4  
<http://rdaregistry.info/Elements/a/rdaa:P50541>  
#1 [https://orcid.org/\[number\]](https://orcid.org/[number]) ←  
245 10 [Title from title screen] : #b [sub title] / #c [Author name as it appears on title page].  
264 \_1 Knoxville, Tennessee : #b The University of Tennessee, Knoxville, #c 2019.  
264 \_4 #c ©2019 [If included by author]  
300 \_\_ 1 online resource ( pages) : #b [if applies: illustrations, maps, etc., also adjust Fixed Field accordingly]  
336 \_\_ text #b txt #2 rdacontent #0  
<http://rdaregistry.info/termList/RDAContent/1020>  
337 \_\_ computer #b c #2 rdamedia #0  
<http://rdaregistry.info/termList/RDAMedia/1003>  
338 \_\_ online resource #b cr #2 rdacarrier  
#0 <http://rdaregistry.info/termList/RDACarrier/1018>

500 \_\_ Title from title page screen (viewed on [month, day], 2019).  
500 Thesis advisor: [first name last name]  
502 \_\_ #b Ph. D. #c The University of Tennessee, Knoxville #d 2019  
500 \_\_ Vita.  
504 \_\_ Includes bibliographical references ( pages).  
540 \_\_ The author retains ownership of copyright and all other proprietary rights, such as patent rights, in this thesis or dissertation. The author has granted the University permission to archive, to reproduce, and to publicly display this dissertation or thesis in all media now known or developed in the future, including by electronic and digital technologies.  
520 3\_ [Abstract]  
650 0 [Subject headings]  
655 \_7 Academic theses #2 lcft  
690 \_\_ UTK Theses #x [Major verified]  
700 1\_ [Major professor -- verified form of name], #e degree supervisor #4  
<http://rdaregistry.info/Elements/a/rdaa:P50091>  
#1 [https://orcid.org/\[number\]](https://orcid.org/[number]) ←  
710 2\_ University of Tennessee, Knoxville. #b Department of [...], #e degree granting institution  
#4 <http://rdaregistry.info/Elements/a/rdaa:P50003>  
856 40 #u [Paste URL here]

# Cataloging Guideline (2)

ii. To save time, use **ORCIDs from TRACE** as supplied by **ETD authors**, and for **degree supervisors**, from their **faculty websites, faculty.utk.edu** website, Dimensions.ai, and **orcid.org**

Example: A link to ORCID in **Dimensions**

The screenshot shows the Dimensions website interface. At the top, there is a search bar with the text "e.g. plastic AND instrument" and a search icon. To the right of the search bar are links for "Save / Export", "Support", and "Register". Below the search bar, there is a navigation link "< Go back". The main content area displays the profile for "Anchalee Panigabutra-Roberts". The profile is divided into several sections: "Publications" (4), "Citations" (5), "Datasets" (0), "Grants" (0), "Funding amount" (-), "Patents" (0), and "Clinical Trials" (0). To the right of these sections is a section titled "Other websites" which includes links for "ORCID record", "ResearcherID", and "Scopus Author ID". A blue arrow points from the "Patents" section to the "ORCID record" link.

Dimensions  Save / Export Support Register

< Go back

**Anchalee Panigabutra-Roberts**

Publications 4	Datasets 0	Grants 0	Patents 0
Citations 5		Funding amount -	Clinical Trials 0

**Other websites**

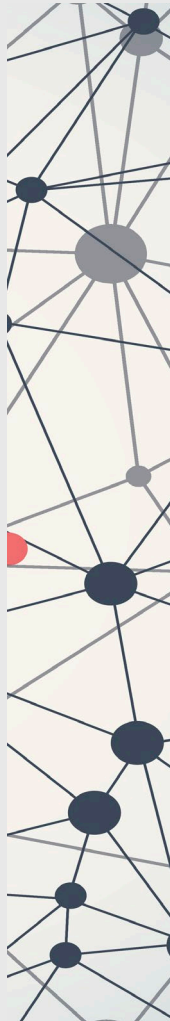
- ORCID record
- ResearcherID
- Scopus Author ID



# Cataloging Guideline (3)

iii. Add **ORCID URIs** as ***\$1 - Real World Object URIs*** for **ETD authors and/or degree supervisors** to WorldCat records; export records to Alma

iv. In Ex Libris Alma's local records, add **ORCIDs as number strings** to be searchable in Alma via the advanced search



# Ex Libris Alma's Advanced Search for an ORCID iD

ORCID - Open Researcher and Contributor  Contains Keywords

[Clear form](#)

ORCID - Real World Object URI  Contains Keywords

[Clear form](#)





# Examples from UT Libraries' Catalog

## Author:

**100 1\_ |a Weir, Elise Anne, |e author |4**

<http://rdaregistry.info/Elements/a/rdaa:P50541>

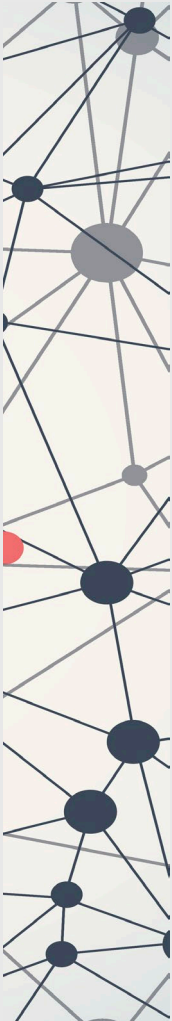
**|0 (orcid)0000-0003-4681-8839 |1 <https://orcid.org/0000-0003-4681-8839>**

## Degree supervisor:

**700 1\_ |a Thistlethwaite, Morwen, |e degree supervisor.**

**|4 <http://rdaregistry.info/Elements/a/rdaa:P50091>**

**|0 (orcid)0000-0003-4890-0123 |1 <https://orcid.org/0000-0003-4890-0123>**





THE UNIVERSITY OF  
TENNESSEE  
KNOXVILLE

Q&A

THANK YOU



# Contact @ University of Tennessee Libraries

**Anchalee Panigabutra-Roberts**

Associate Professor

Head, Cataloging

E-mail: [apanigab@utk.edu](mailto:apanigab@utk.edu)

**Wanda Rosinski**

Senior Cataloger

E-mail: [wrosinsk@utk.edu](mailto:wrosinsk@utk.edu)

**David Scott**

Senior Cataloger

E-mail: [dscott41@utk.edu](mailto:dscott41@utk.edu)



# Acknowledgments

## **University of Tennessee Libraries' Cataloging Team**

- ❖ Robin L. Cox, Senior Cataloger (Retired)
- ❖ Wanda Rosinski, Senior Cataloger
- ❖ Kim Blaylock, Senior Cataloger
- ❖ David Scott, Senior Cataloger
- ❖ Jordan Lanagan, E-resources and Continuing Resources  
Cataloger
- ❖ Owen Shelnutt, Catalog Database Management Specialist
- ❖ Shelby Edmonson, Graduate Student Library Assistant

## **Other colleagues:**

### **University of Tennessee Libraries**

- \*Josh Morgan, Digital Collections Administrator, and student  
library assistants
- \*Ashley Cate, Publishing & Open Repository (TRACE)  
Administrator

### **University of Tennessee Graduate School**

- \*Abby L. Sherman, Assistant Director of Student Support