

# Bridging Gaps to Library Accessibility

## Building Access Together



**Nashville Public Library | Equal Access Department**

Presenters: Cynthia Moynihan & Beth Williamson



# Today's Workshop Will Cover:

## Strategy

- Access Beyond Compliance
- Nashville's Accessibility Models

## Implementation

- Free Resources and Replicable Programs
- Talking Library, Captions, and Tools
- Practical Steps You Can Implement Immediately

# Access Beyond Compliance

- 1 in 4 adults live with a disability
- Most disabilities are not visible
- Accessibility determines who can fully participate in your library

# Access Builds Community

Access happens in everyday moments.

Clear communication and thoughtful design show people they belong.

Consistency builds trust.



Image by macrovector on Freepik

# Library Services for the Deaf & Hard of Hearing

Library program serving Deaf, Hard of Hearing, and DeafBlind Tennesseans.

Part of Nashville Public Library's Equal Access Department.

State funded since 1986.



# Library Services for the Deaf & Hard of Hearing

## Mission in Action



Outreach and connection with libraries and community partners

Online directory of hundreds of Deaf, DeafBlind, and Hard of Hearing resources

Programs that celebrate Deaf culture and strengthen inclusion statewide

14,000+ accessible books, media, and assistive resources

# Building Access Together Across Tennessee

## What we offer now:

- Deaf-led and Hard of Hearing inclusive programs
- Training and consultation for library staff
- Support with interpreters, captioning, and assistive technology

## What we see for the future:

- Stronger collaboration with libraries across Tennessee
- Accessible marketing and program templates
- Shared training tools and resource guides



# What We Know

Access increases participation.

Training builds confidence.

Consistency builds trust.

These principles shape our work across Tennessee.

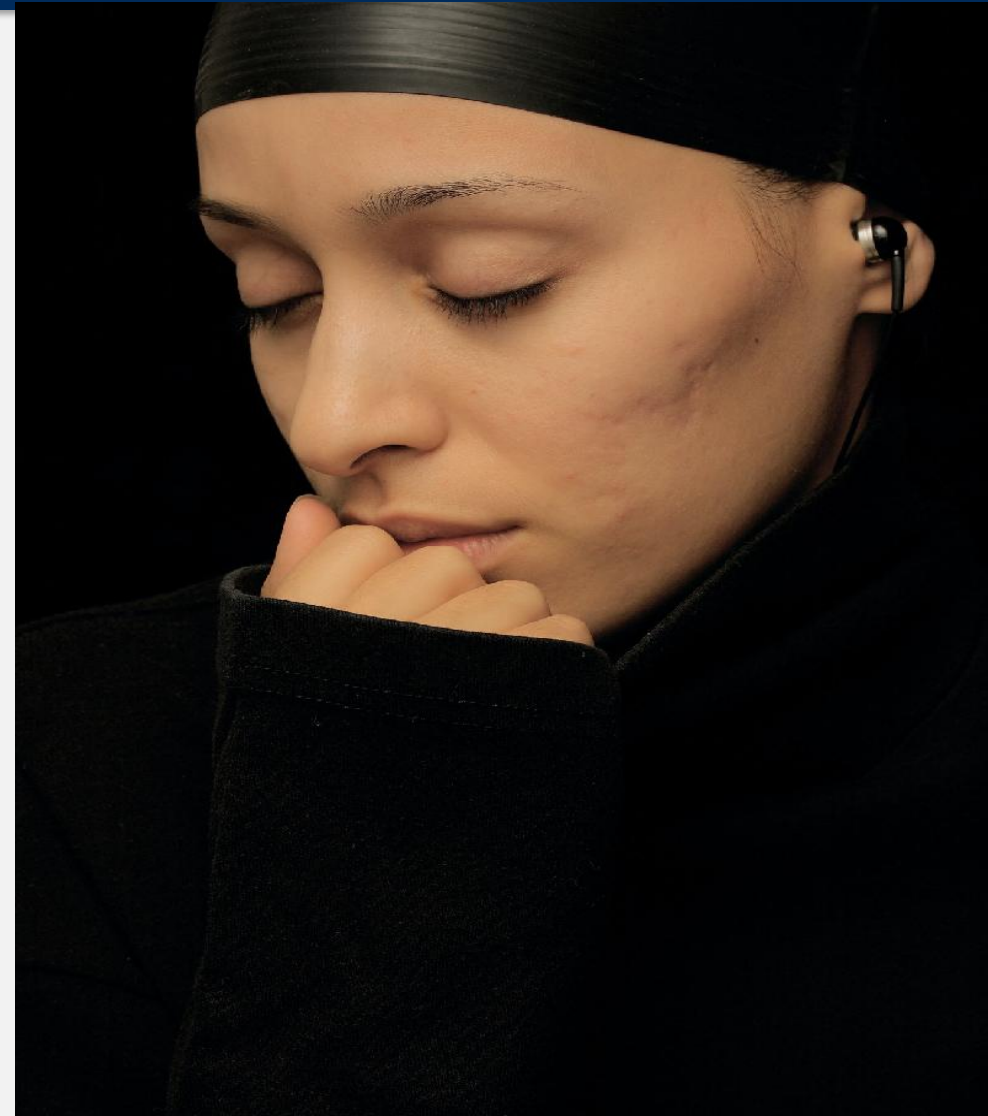


## Nashville Talking Library

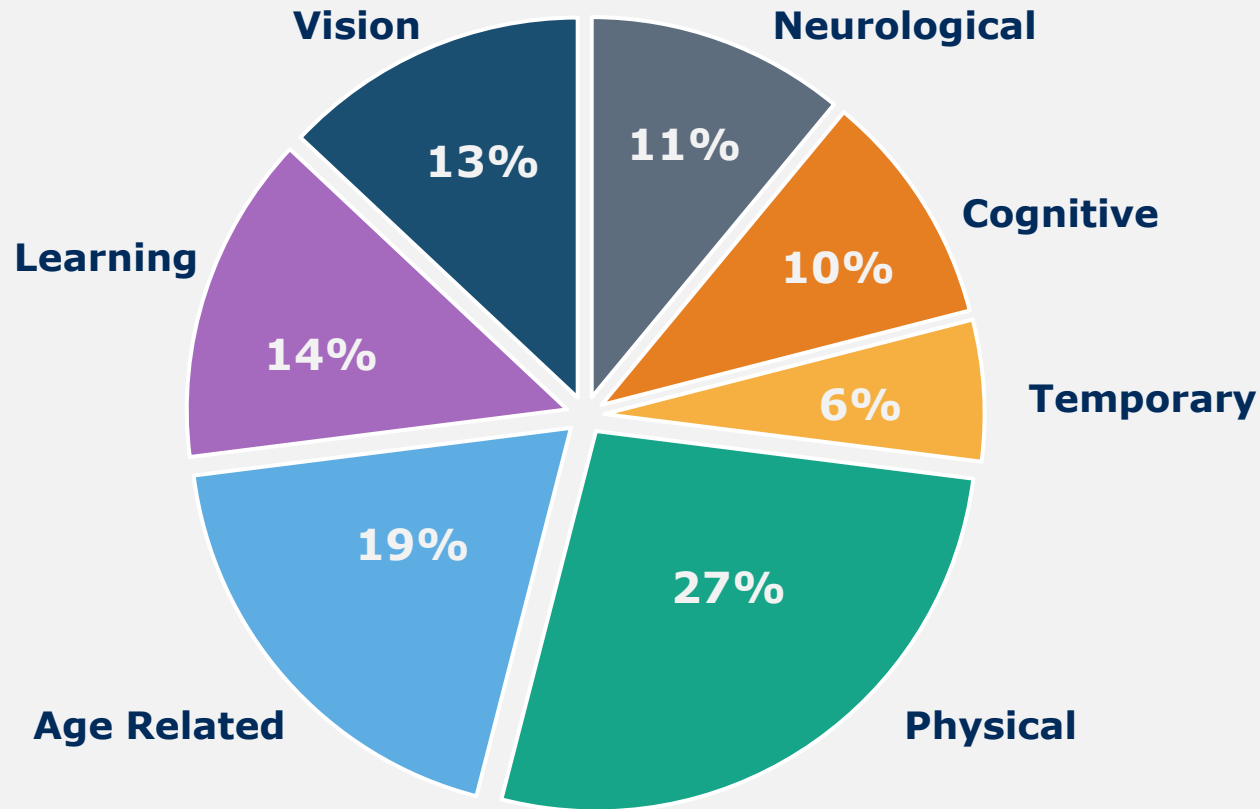
### Connecting Tennesseans Through Audio Access

---

- Established in December of 1975
- Three on-site recording booths
- Providing recorded and live materials to the reading disabled 24 hours a day/7 days a week
- Connecting the reading disabled to materials through the power of voice



# NTL Bridging the Gap through Audio Access



- Over one million face reading **barriers** throughout Tennessee
- Roughly 1 in 5 patrons have reading disabilities

## The Impact of Connection

Every day, listeners tune in to stay informed, engaged, and connected to their communities.

For many, the Nashville Talking Library is their main link to news, books, and a familiar voice.

Access to information means access to belonging.



## NTL - Mission in Action

- 35+ volunteer readers producing hundreds of hours of live and recorded material monthly

**Creating a Connected  
Community - One Word at a  
Time**



# Nashville Talking Library is Available Via



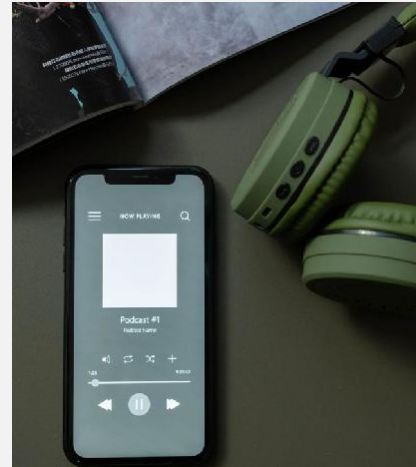
## STREAMING – ALEXA OR NTL WEBSITE

NTL Alexa Echo Dots or  
Live /on-demand  
NTL website programming



## DIAL BY PHONE

Phone access. Charges  
may apply, based on  
individual phone plans



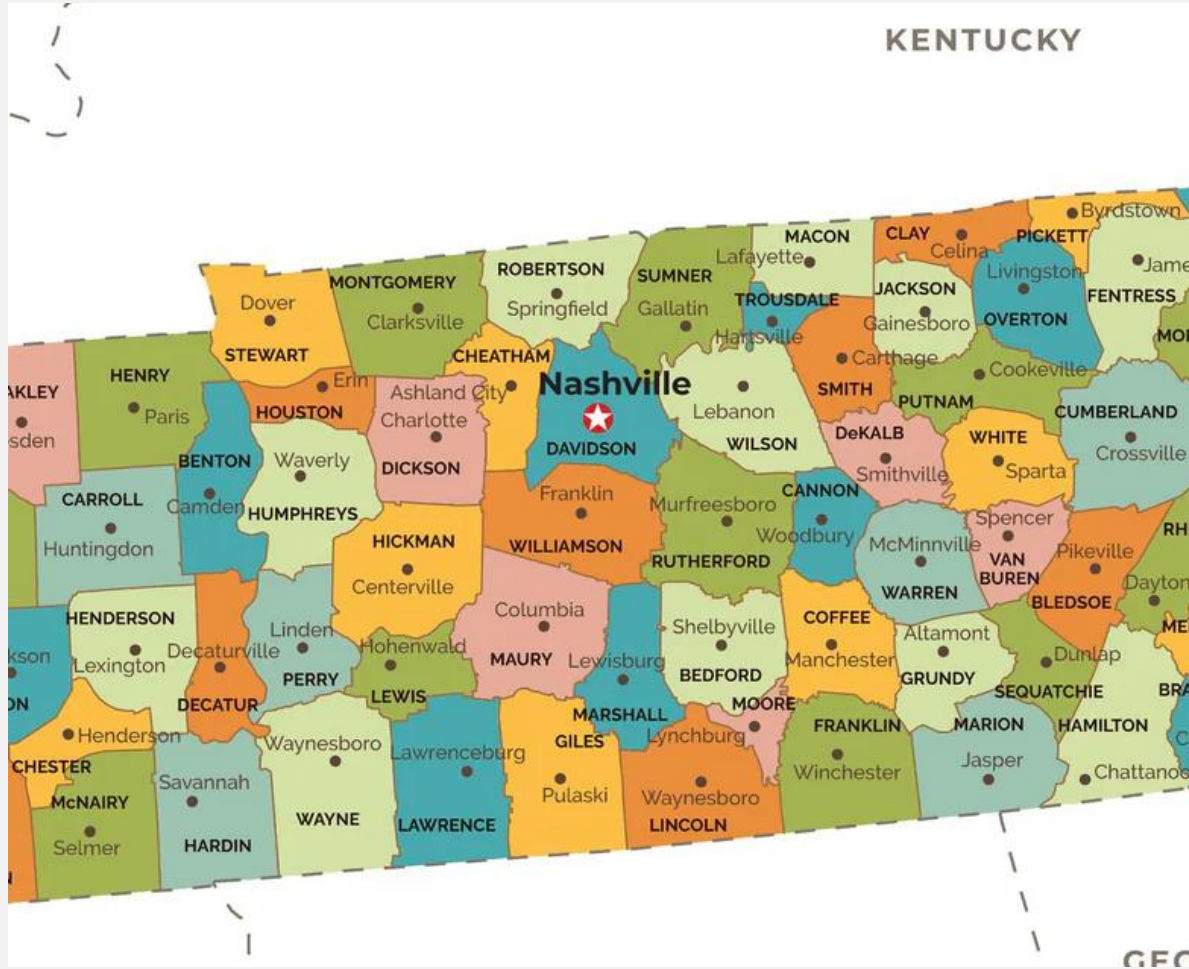
## ON DEMAND PODCASTS

Available through NTL



## SPECIALIZED RADIO RECEIVERS

Stream via the NTL website  
or podcast players on any  
smart device.



## How We Serve Our Listeners

---

- Broadcast and online streaming News, magazines, poetry, local events, books, and more
- Programs available 24 hours a day – 7 days a week

## Looking Ahead

NTL continues to expand services to the reading disabled through initiatives and partnerships.



### **Expand Reach**

Grow listenership within Tennessee through outreach and digital access



### **Strengthen Partnerships**

Collaborate with libraries and community organizations to share content statewide



### **Enhance Accessibility**

Technology that improves user experience our listeners

# Make It Yours: Evaluate Access

Evaluate every step. How people see, hear, and understand your message. Start by Connecting.

## Physical & Environmental

- Assistive listening available and labeled
- Clear, visible signage

## Digital & Print Materials that Include:

- Captions and alt text
- Large print or audio options

## Communication & Staff

- Training staff on accessible service
- Interpreters or readers available

# Make It Yours: Build Forward

**What's one barrier you will remove?**

Choose one step to start this month

## **Ideas to start:**

- Add captions or large print
- Make devices visible and labeled
- Name an accessibility contact
- Ask patrons what would help





# From Access to Inclusion

Access connects people.

Connection builds trust.

Trust creates inclusion.

# Questions & Connections

**We want your insight.**

- What is working in your library?
- What is challenging?
- Where do you need support?



# Thank You for Joining Us

## Nashville Public Library | Equal Access Department



### **Nashville Talking Library (NTL)**

Email: [ntl@nashville.gov](mailto:ntl@nashville.gov)

Website: [library.nashville.org/talking-library](http://library.nashville.org/talking-library)

Phone: (615) 862-5874

### **Library Services for the Deaf & Hard of Hearing (LSDHH)**

Email: [deaf.services@nashville.gov](mailto:deaf.services@nashville.gov)

Website: [tndeaflibrary.Nashville.gov](http://tndeaflibrary.Nashville.gov)

Phone: (615) 862-5750

Your work strengthens access for patrons across Tennessee