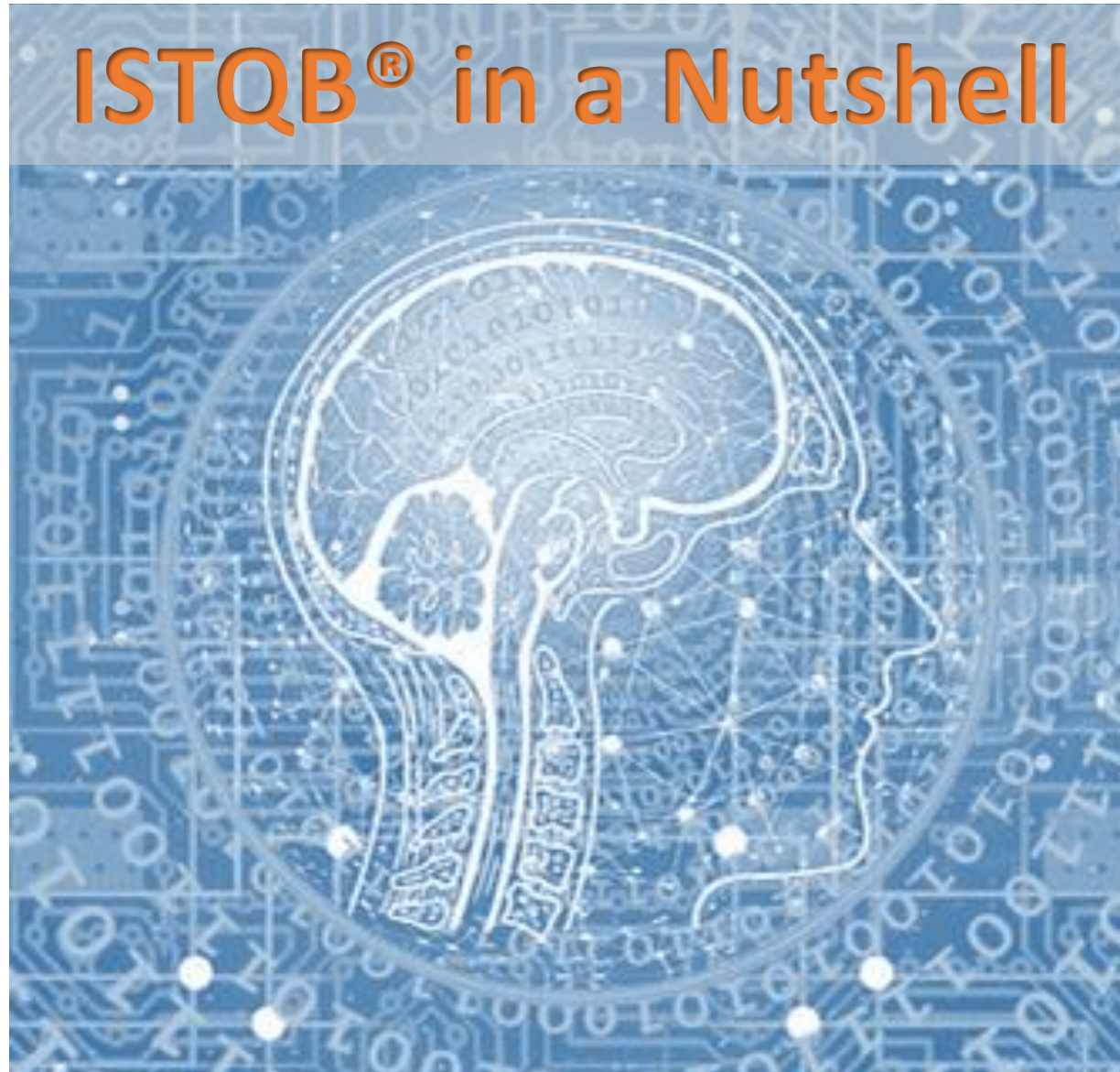






Everything You Always Wanted to Know About
the ISTQB® but Never Dared to Ask...

Olivier Denoo – vice president





Worldwide recognized independent certification scheme in software testing

Since 2002 - 130 countries – many supported languages – exam consistency



SERIOUS REFERENCES

IEEE829
IEEE1028
IEEE1044
IEEE12207

ISO9126
ISO14764
ISO15745
ISO16100
ISO20246
ISO25010
ISO25019
ISO29119
ISO31000
ISO61508

OMG BPMN
OMG DMN
OMG UML

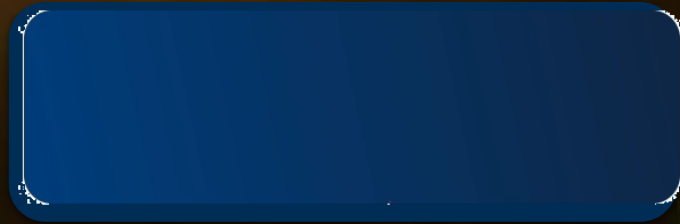
RTCA DO178C



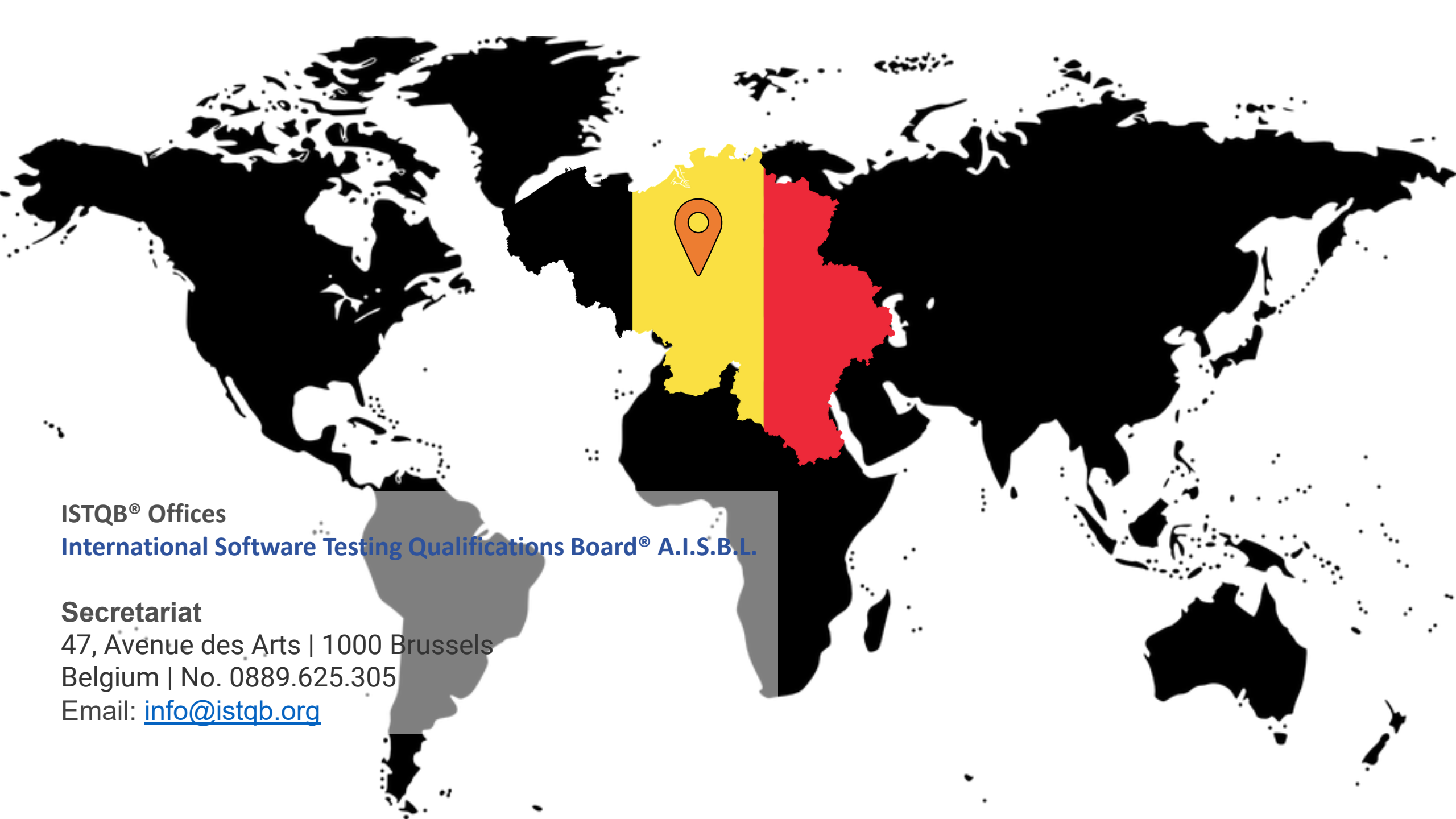
A WORLDWIDE SUCCESS

^ Mars 54,000,000 km

> 1,000,000







ISTQB® Offices

International Software Testing Qualifications Board® A.I.S.B.L.

Secretariat

47, Avenue des Arts | 1000 Brussels

Belgium | No. 0889.625.305

Email: info@istqb.org



CFTL

BREAKING NEWS

The ISTQB® DOES NOT EXIST



What's in it for ME?





Independent, internationally recognized
Validation of skills that employers trust
Proof of ability for current and future employment
Supports career progression
Professional credibility

ME



Competitive advantage- greater confidence
Higher level of reliability
Efficient and cost-effective practices
Higher-level services to customers
Marketing advantage

MY C°

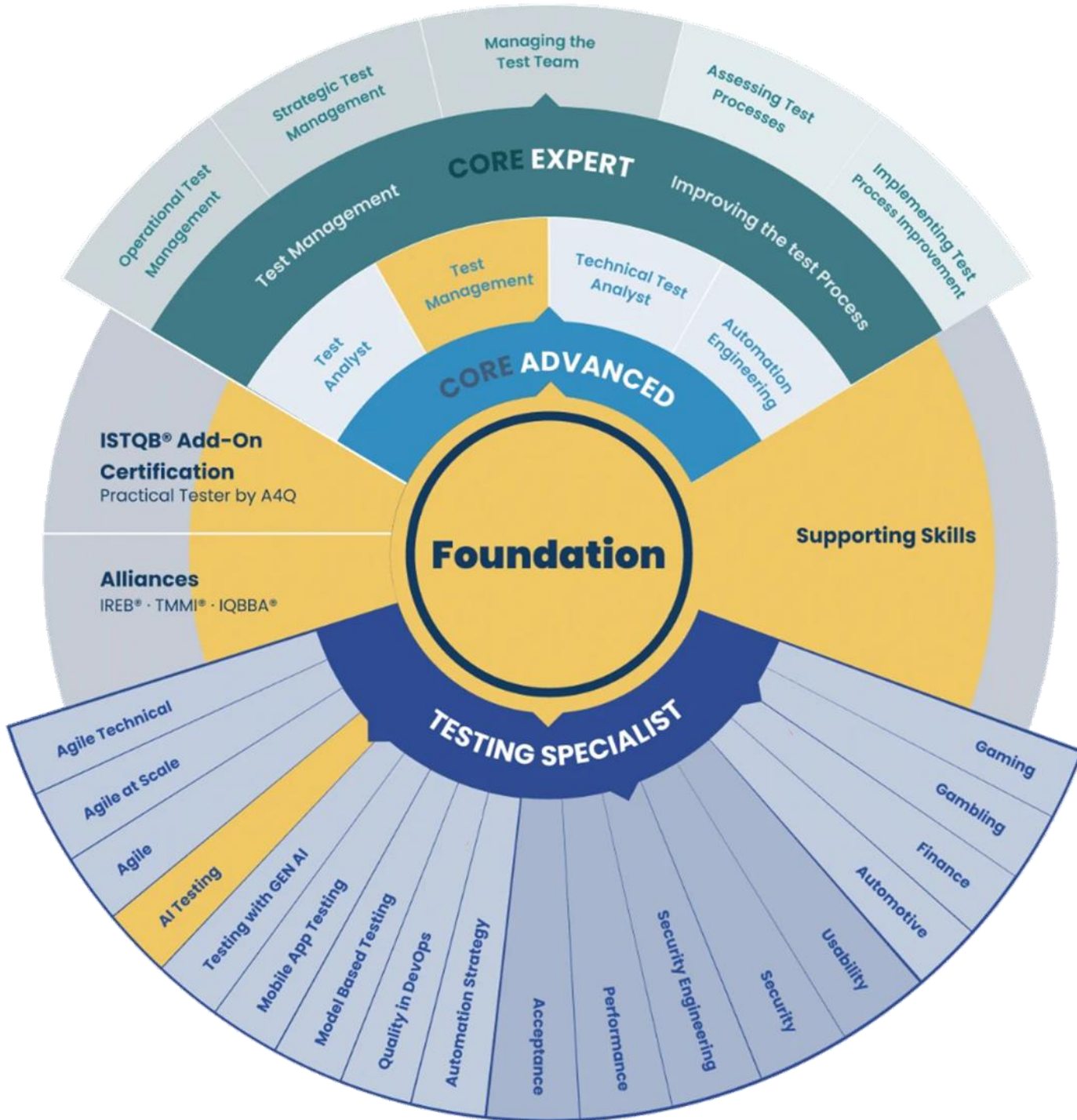


Community of professional and experts
Common language & practices
Better Software
Better life

QA COMMUNITY

ISTQB® Portfolio & Career Path





Parker
Scrum Master



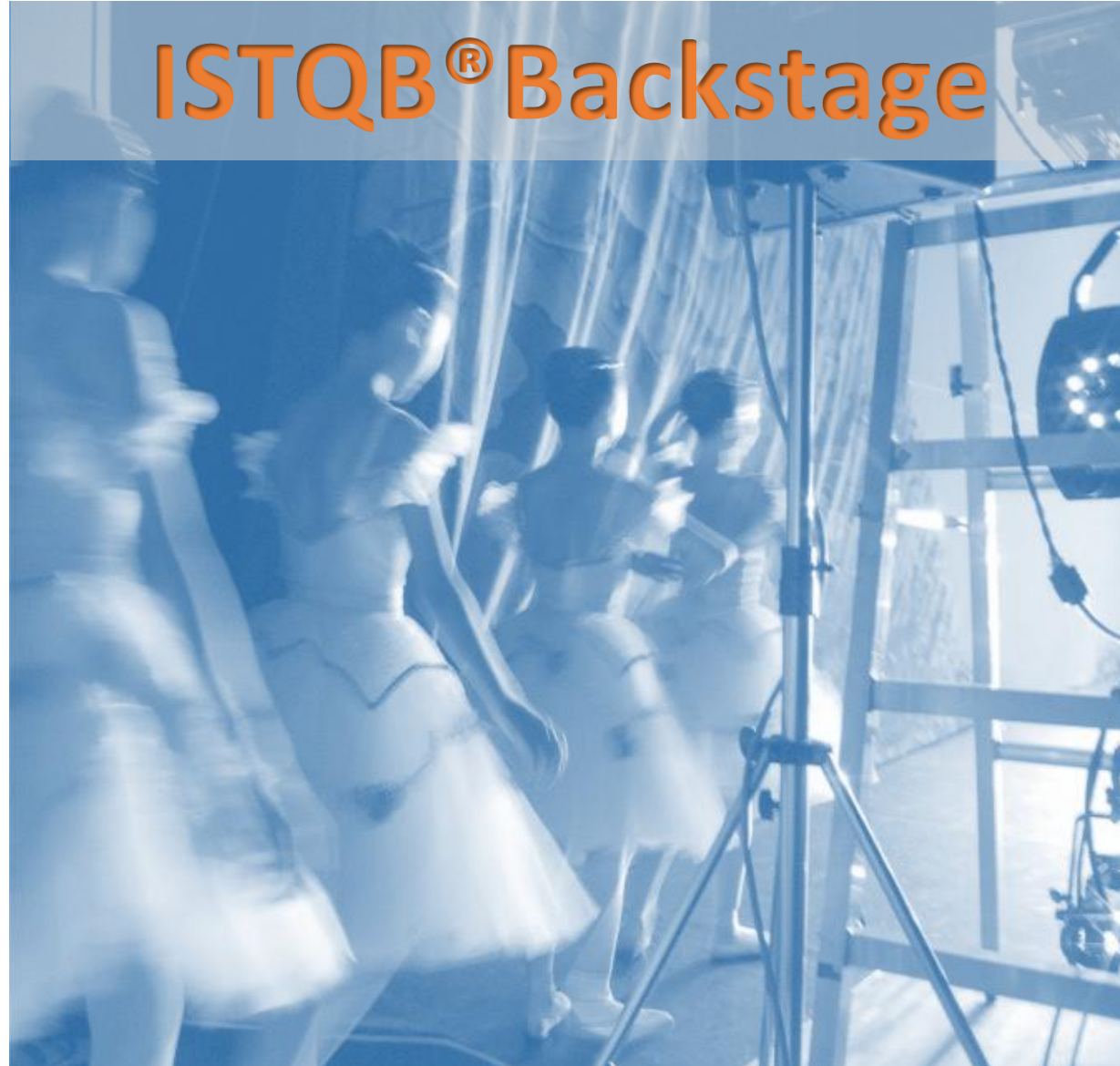
Liam
Tester



Anya
Test Manager



Mateo
Software Product Manager





AT LARGE

TOOL DEVELOPERS / ACADEMIA / PUBLIC ADMINISTRATION

SW DEVELOPMENT COMPANIES / END USER COMPANIES

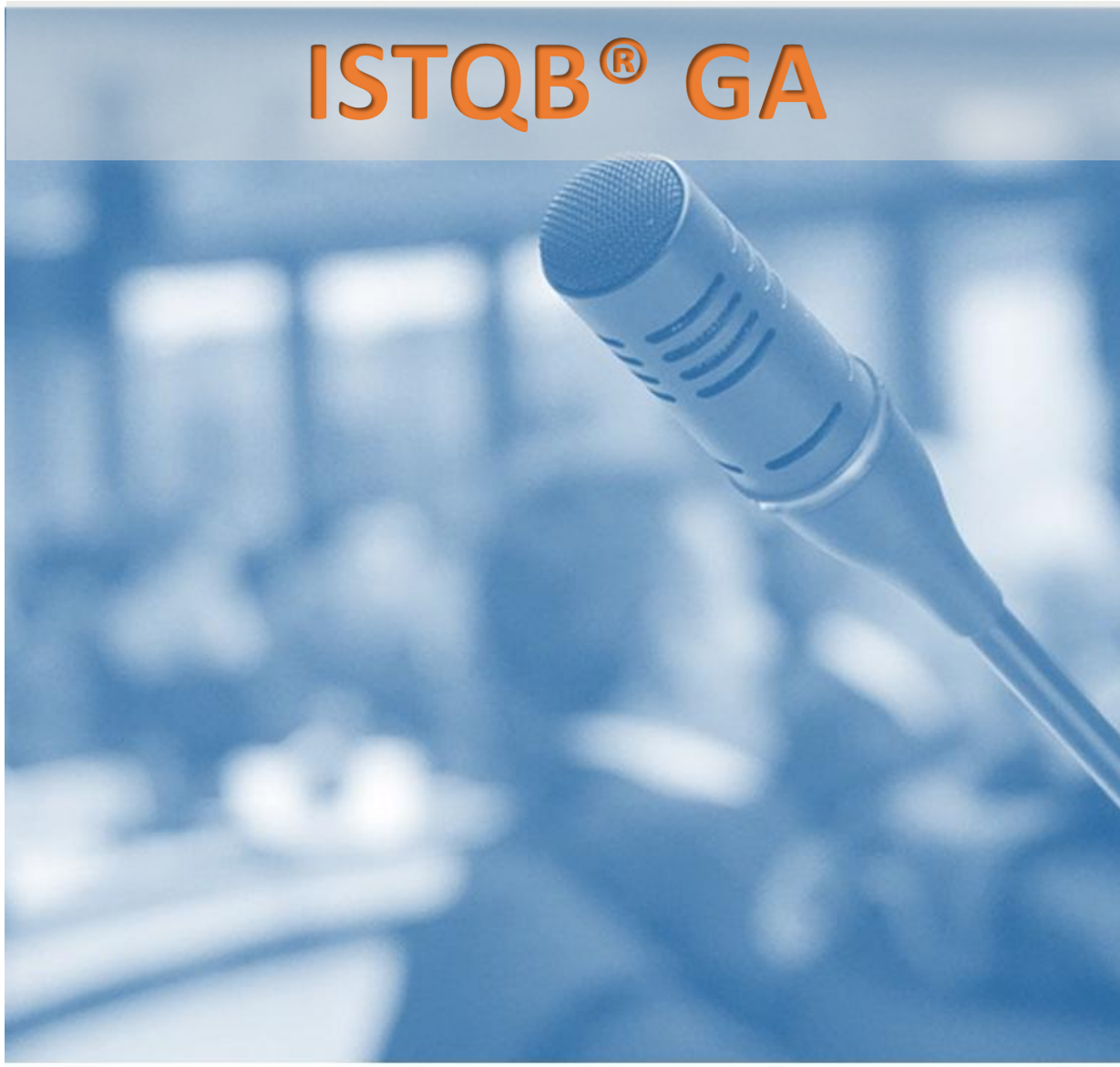
CERTIFIED PROFESSIONALS

TRAINING PROVIDERS / EXAM BODIES

MEMBER BOARDS

WORKING GROUPS

GENERAL





71 Member Boards (all NFP's)
1 vote each

- GA (up to 200-250 p.)
 - MBs / WGs propose motions
 - 71 MBs vote (in person / proxy)
 - Majority (50%+1 - 2/3)
- EXEC (4 p.)
 - Strategic + operational
- WGs (about 60-80 p.)
 - Operational
 - processes & rules



Who Can Join As a MB?

NFP or local equivalent

« uncovered » area / coopted by the local MB

Conditions to meet (see website)

Presentation @GA

Approval by the GA + mentoring





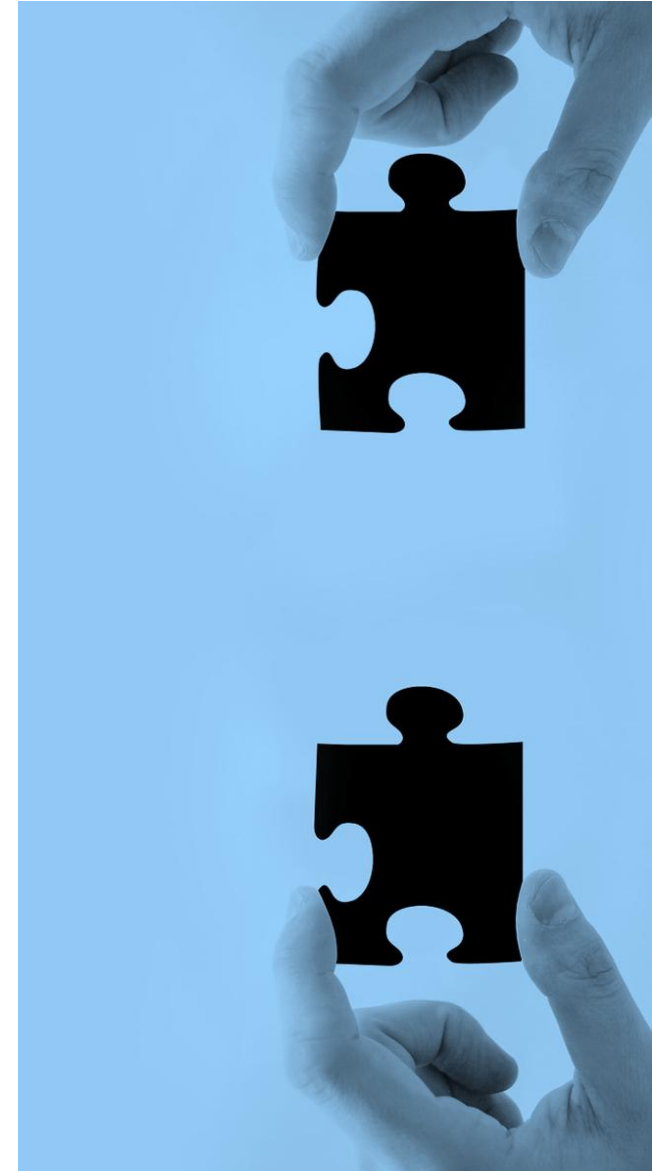
Who Can Join a MB?

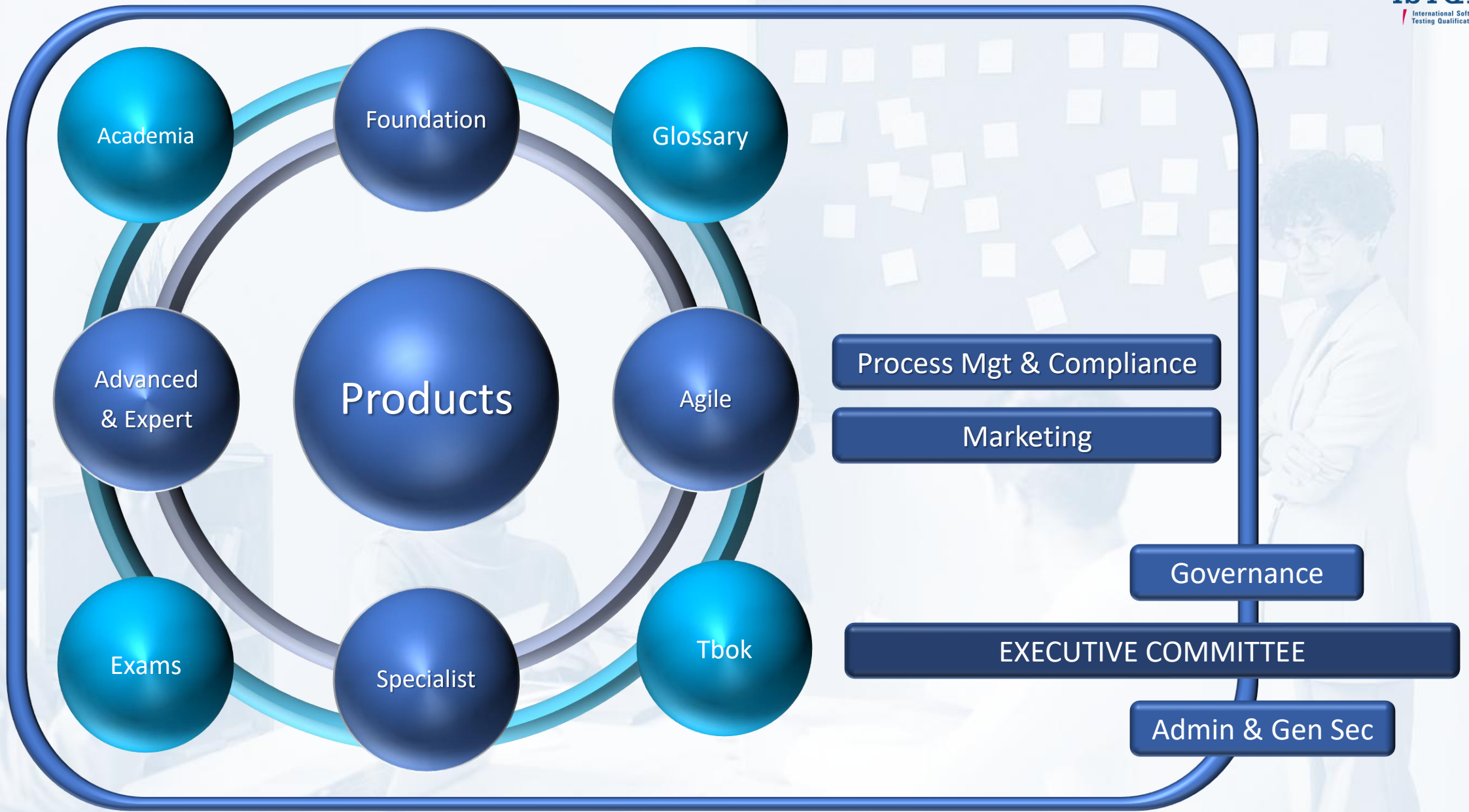
Everyone interested

Approval by the Member Board

NDA + local conditions









Who Can Join a WG?

Everyone interested

no need to be a member - NDA

Proposed by a MB

Chairs, Vice-chairs, EXEC

Elected by the GA for 2 years

Member of a MB



The Executive Team



KLAUDIA DUSSA ZIEGER

PRESIDENT



OLIVIER DENOO

VICE-PRESIDENT



SARAH SAVOY

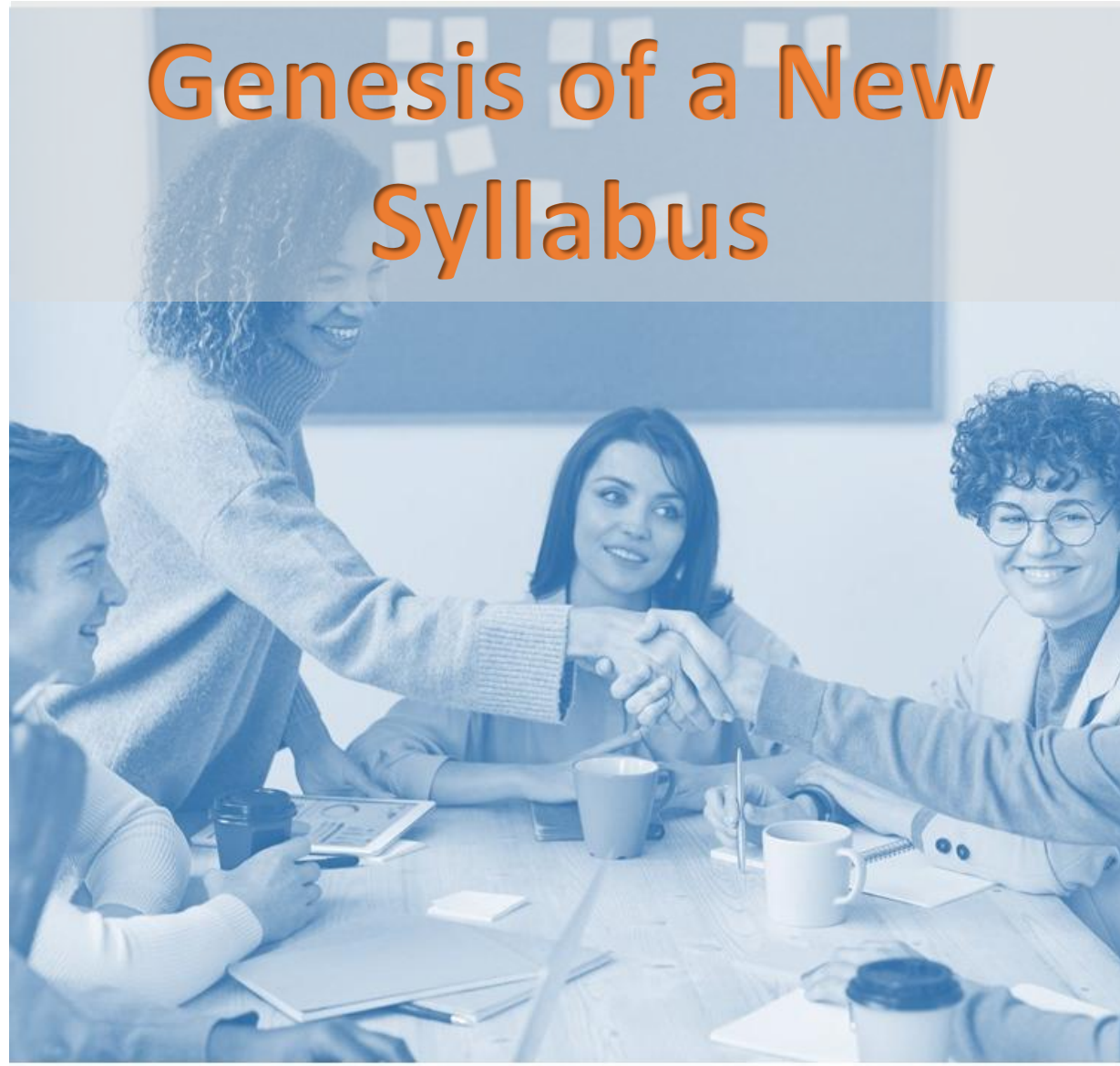
TREASURER

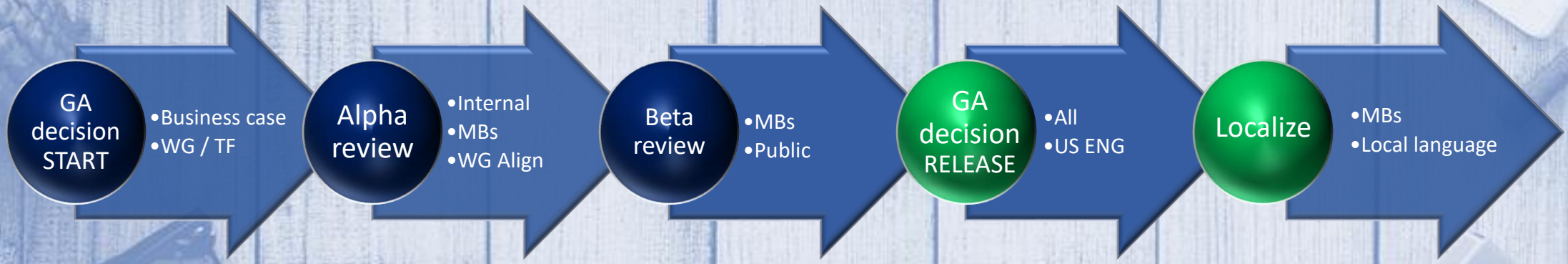


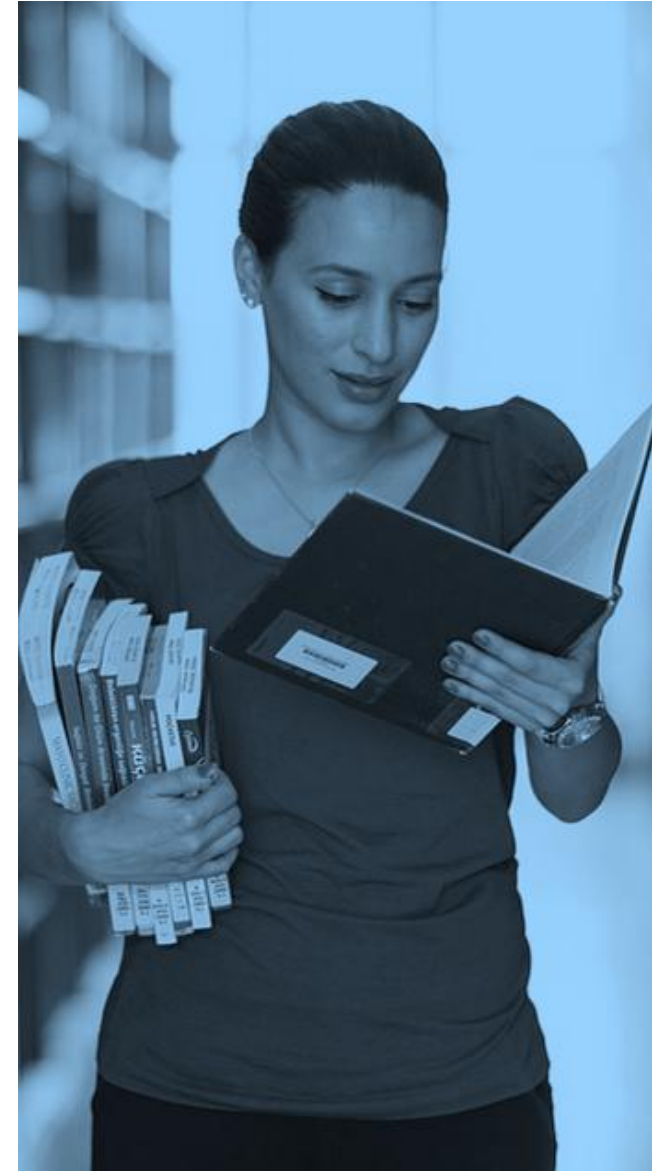
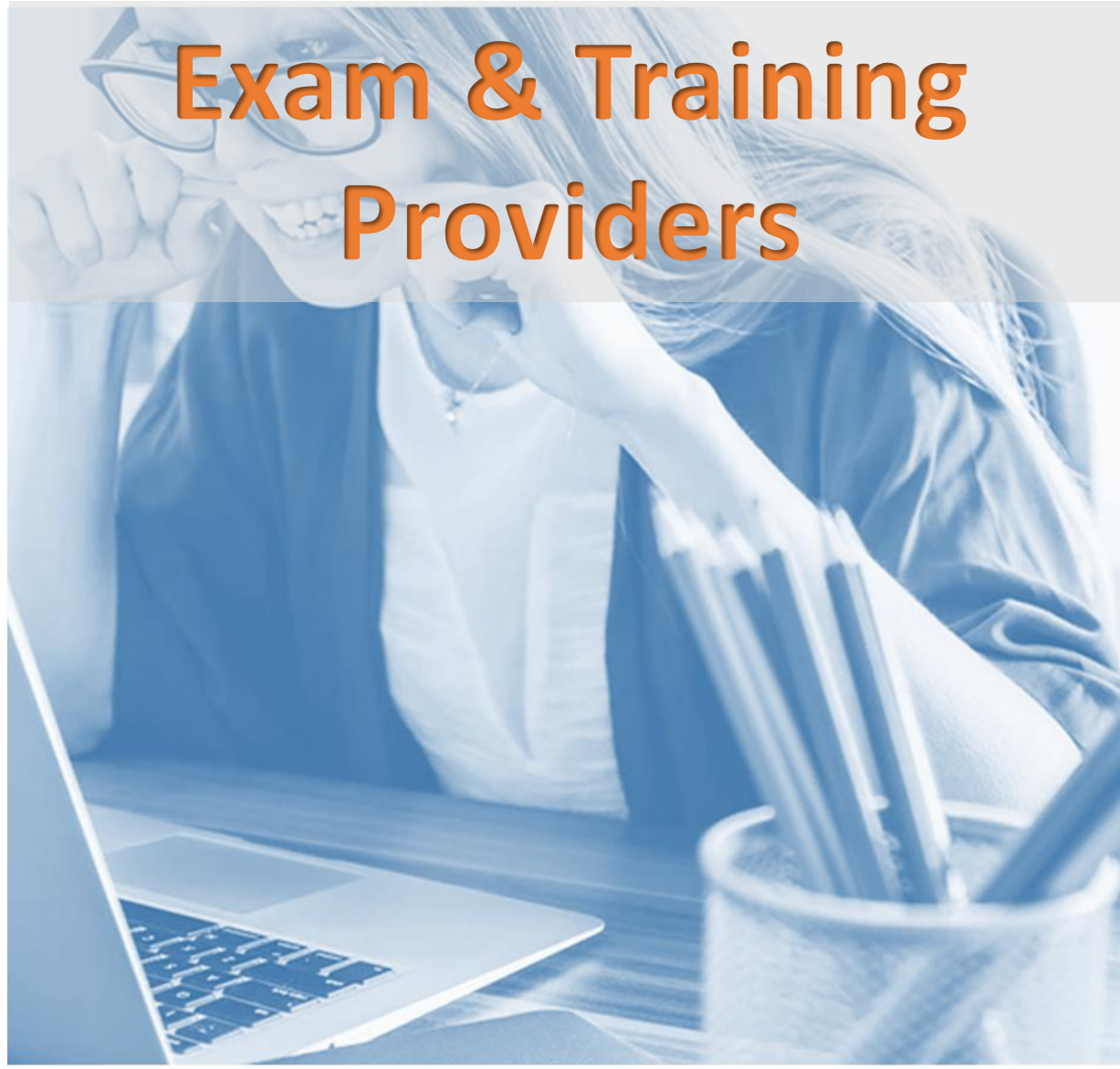
SEBASTIAN MALYSKA

SECRETARY

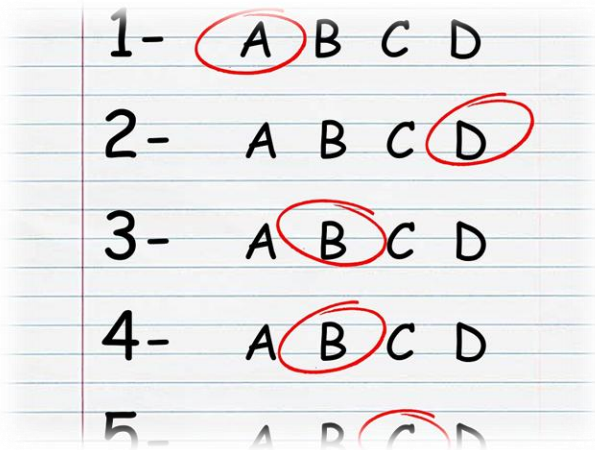








Exam & Training Providers



Exam Providers

Everyone interested

no need to be a member - NDA

Proposed by a MB

Chairs, Vice-chairs, EXEC

Elected by the GA for 2 years

Member of a MB







FAQ

- Do I REALLY need to hold a certificate?
 - Does it really make a difference?
 - Is Foundation Level enough?
 - Can you be good but non-certified tester?
 - Is a XXX certificate better than a YYY?



FAQ

- Is ISTQB® REALLY not for profit?
 - What's in it for you?
 - How do you make the money?
 - Aren't there conflicts of interest?
 - Is it some holidays club?



FAQ

- Why Multiple Choices Questions Exams?
 - Can you truly evaluate and assess?



FAQ

- Why is Foundation Level a precondition to everything?
 - Why can't you just jump in anywhere?
 - What is FL against Experience and Practice?



FAQ

- Do I need an accredited training first?
 - What is the added value of an accredited training?
 - Should I trust that fancy marketing offer from this non-accredited training provider?
 - They said their course is much better than ISTQB®'s, is it true?



FAQ

- What tools or methodologies does the ISTQB® recommend?



FAQ

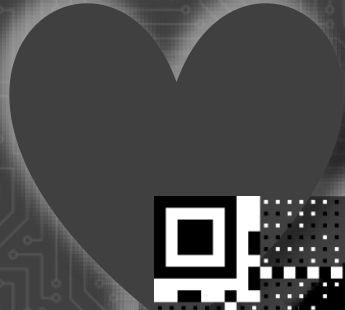
- What can I expect from the ISTQB® in the near future ?



 olivier-denoo

olivier-denoo.net

olivier.denoo@pstestware.com



ps_testWare
Your devil's advocate



ISTQB
International Software
Testing Qualifications Board

IQ:BA
International Qualification
Board for Business Analysis

IIREB International
Requirements
Engineering
Board